

★ ALLWOOD STRUCTURES ★
POLE BUILDINGS



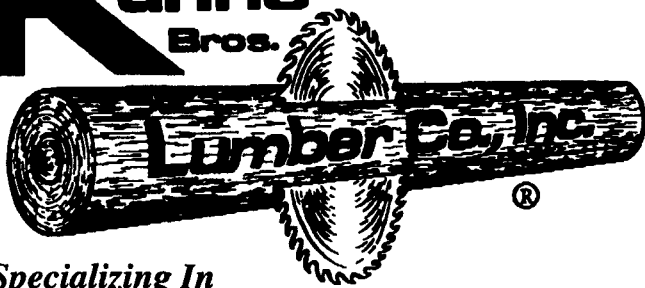
STANDARD BUILDINGS		LOFT BUILDINGS	
24x32x8	\$4,800	24x32x8	\$9,550
24x40x8	\$6,000	24x40x8	\$11,100
30x40x8	\$7,500	30x40x8	\$13,800
32x64x10	\$11,800	32x64x8	\$19,100
40x80x12	\$17,300		

ERECTED PRICES (Includes slider and service door)

We specialize in: Horse Barns, Riding Arenas, Garages, Machine Sheds or Custom Built To Your Specifications

CALL FOR FREE ESTIMATE AND BROCHURE
1-800-247-0241

Kuhns
Bros.



Specializing In

Rough Cut HEMLOCK & WHITE PINE
For All Your Building Needs

- Custom Orders
- Hard To Find Items, UP TO 26 Ft. Lengths
- Sawdust For Bedding
In Trailers Loads... We Deliver!

CALL 1-800-326-9542 Monday - Friday
7 AM To 5 PM



Conestoga Buildings Inc.

Pole Buildings



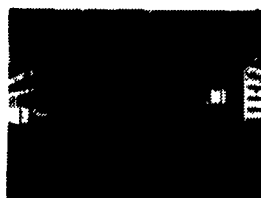
Residential



Commercial



Riding Arenas



Stall Kits

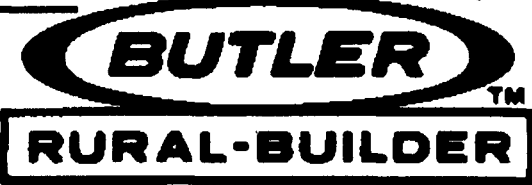
- Complete Building Packages
- In-House professional Engineering Assistance

Call Now For Your Free Estimate
or Free Brochure

1-800-544-9464 (717)354-2613

SPEEDWELL CONSTRUCTION INC.

33 YEARS OF EXPERIENCE

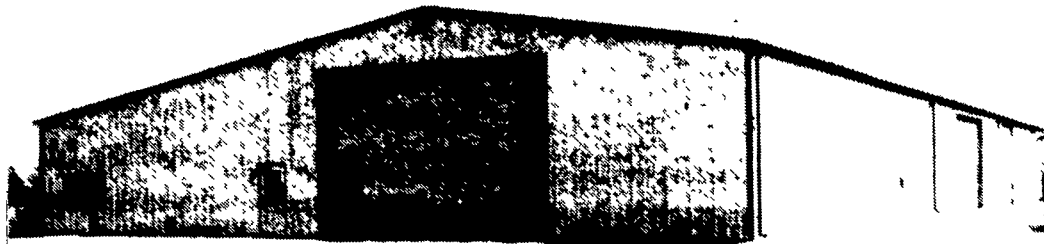
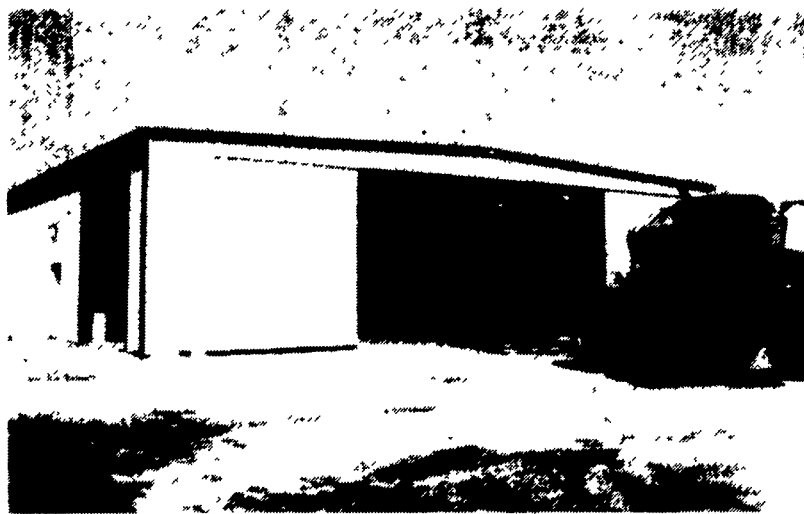


70 North Esbshade Road
Manheim, PA 17545
717-665-6861
FAX 717-653-6968

No matter what type of building you're looking for - shop, retail store, community building or storage facility- we build durable Butler® rural steel buildings with attractive architectural appeal. And your building will grow in value over the years when you build with us.

We put our broad range of design, engineering and construction capabilities to work on every project, and we back those capabilities with prompt service. Contact us for a quote today.

Butler shop buildings are built to give you years of high-use value, low maintenance and maximum comfort. Solid, practical design and rugged steel construction make Butler buildings durable and functional for years to come.



Outside: Your Choice

The appearance of your new building is a critical factor. You just tell us what you'd like and we can build it!

Our structural systems are designed to give you complete freedom in planing the size and shape of your building.

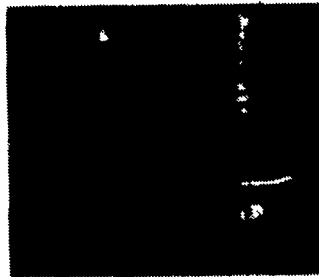


Products that Perform from the Building Systems Industry Leader

You can count on Butler to provide the best materials available.

For example, our standard exterior coating for painted panels is Butler-Cote® 500 FP finishing system, a full strength, 70% Kynar 500® & Hylar 5000® coating. Our coating will resist chalking and fading better than industry standard coatings.

Our fasteners represent another area where Butler offers more for your money. The Scrubolt™ fastener by Butler, available on the Butlerib wall and roof systems and the Shadowrib® wall system, is larger and more resistant to the pull-out forces of wind than industry standard fasteners.



If you are interested in any of the following buildings, please send us information on the checked.

- Mni Storage Building
- Shop Buildings
- Commercial Building
- Stone Building
- Storage Building
- Office Building

Name _____
Address _____

Town _____ State _____
Zip Code _____ Phone _____

Mail To: **SPEEDWELL CONSTRUCTION, INC.**
70 N. Esbshade Rd., Manheim, PA 17545