

Grantsville Livestock

Grantsville, Maryland
Report Supplied by Auction
Sat., January 20, 1996

STOCK BULLS AND STEERS 200-500 LBS., NONE AVAILABLE.
STOCK HEIFERS: NONE AVAILABLE.
SLAUGHTER STEERS GOOD TO CHOICE, NONE AVAILABLE; MEDIUM TO GOOD, NONE AVAILABLE.
HOLSTEIN STEERS GOOD, NONE AVAILABLE; LIGHT 40.00-42.00.
SLAUGHTER HEIFERS GOOD TO CHOICE 61.00-62.85; MEDIUM TO GOOD 45.00-55.00.
BULLS HEAVY 35.00-41.00, LIGHT 34.25-44.25.
COWS FEW HIGH DRESSING UP TO 37.00, UTILITY HOLSTEIN 32.00-36.00, CANNERS 25.00-30.00, CULLS 24.00 AND DOWN.
VEALS GOOD TO CHOICE, NONE AVAILABLE, MEDIUM TO GOOD 45.00-65.00.
BOB CALVES: 30.00 AND DOWN.
HOLSTEIN BULL CALVES RETURN TO FARM 90-120 LBS. 50.00-85.00.
HOLSTEIN HEIFER CALVES RETURN TO FARM 100-120 LBS. 70.00-85.00.
BEEF CROSS CALVES RETURN TO FARM UP TO 65.00.
HOGS: TOP QUALITY 42.00-44.00, HEAVY 38.00-41.00, LIGHT 35.00-40.00, FEEDER PIGS BY THE HEAD 10.00-24.00.
SOWS: NONE AVAILABLE.
MALE HOGS: NONE AVAILABLE.
LAMBS: UP TO 98.00; CULLS 65.00 AND DOWN.
SHEEP: UP TO 30.00.

Leesport Livestock

LEESPORT, PA
JANUARY 24, 1996

CATTLE 297... PDA .. Supply included 128 st. steers & heifers & 21 feeder cattle ..Compared with last week's sale..steers mostly 1.00 to 2.00 lower, cows 1.00 to 2.00 lower, heifers mostly steady.
STEERS: few Choice 1125/1145 lbs. 62.50-63.50, Select 55.25-61.75, few Standard 41.00-51.00.
HOLSTEINS: few High Choice and Prime 1395/1615 lbs. 57.00-60.00, Choice 1320/1635 lbs. 53.75-58.25, Select 48.00-53.75, few Standard 42.50-48.50.
HEIFERS: few High Choice and Prime 1160/1330 lbs. 65.25-66.75, Choice 995/1360 lbs. 59.75-63.50, Select 50.25-58.25, few 49.25, few Choice Holsteins 54.00-55.75, few Standard 43.00-48.00.
COWS: Breaking Utility and Commercial 32.00-35.25, few to 37.00, one 39.00, Cutter and Boning Utility 28.75-32.50, Canner and Low Cutter 26.25-30.00, few 25.00, Shells down to 20.00.
BULLOCKS: one Select 53.00.
BULLS: Yield Grade No. 1 1125/1940 lbs. 40.00-44.25, few No. 2 1055/1475 lbs. 35.25-39.75.
FEEDER CATTLE: HEIFERS: Medium & Large Frame No. 1 505/855 lbs. 45.00-47.50;
BULLS: few Large Frame No. 2 305/360 lbs. 30.00-35.00, few Large Frame No. 1 560/940 lbs. 51.00-52.00.
CALVES 151...Holstein bulls steady to spots .10 higher, heifers very strong.
VEALERS: couple Choice 81.00 & 85.00, few Good 50.00-80.00, Standard and Good 75/110 lbs. 30.00-39.00, Utility 50/100 lbs. 15.00-25.00.
FARM CALVES: No. 1 Holstein bulls

90/120 lbs. 60.00-85.00, few 90.00, No. 2 80/120 lbs. 37.50-50.00, few 65.00; No. 1 Holstein heifers 80/125 lbs. 90.00-130.00, No. 2 80/100 lbs. 35.00-77.50. Few beef cross bulls and heifers 80/105 lbs. 40.00-95.00.
HOGS 146...Barrows and gilts steady to 1.00 spots 1.50 higher, sows mostly steady.
BARROWS AND GILTS: US 1-2 230/275 lbs. 41.50-41.75, US 1-3 220/280 lbs. 39.50-41.10, few US 2-3 275/315 lbs. 32.00-38.50.
SOWS: US 1-3 340/465 lbs. 27.00-29.50, 500/670 lbs. 29.00-31.50.
BOARS: few 270/745 lbs. 20.00-25.00.
FEEDER PIGS 121...US 1-3 30/45 lbs. 50.00-66.00, lot 65 lbs. 48.00, Utility 20/25 lbs. 25.00-55.00. --- per cwt.
SHEEP 49...SLAUGHTER LAMBS: Choice 100/135 lbs. 79.00-81.00, few 70/90 lbs. 95.00-100.00, few 135/160 lbs. 65.00-66.00.
NEW CROP LAMBS: few Choice 45/55 lbs. 130.00-165.00, lot 60 lbs. 105.00.
SLAUGHTER SHEEP: 20.00-50.00.
GOATS 4...Few Medium 57.50-62.50, one Large Kid 60.00. --- per head.
New Wilmington Livestock
NEW WILMINGTON, PA
JANUARY 22, 1996
CATTLE 179... PDA ..
STEERS: one Choice 1140 lbs. 62.25, few Standard 52.00-52.25.
HOLSTEINS: one Choice 1265 lbs. 55.00, few Standard 43.00-47.50.
HEIFERS: one Choice 995 lbs. 58.25.
COWS: Breaking Utility and Commercial 32.00-35.50, Cutter and Boning Utility 26.00-31.75, couple 34.25, Canner and Low Cutter 22.00-25.75. Shells down to 15.00.
BULLS: one Yield Grade No. 1 1555

lbs. 44.50, few No. 2 1300/1550 lbs. 35.00-36.50.
FEEDER CATTLE: STEERS: few Medium Frame No. 1 375/550 lbs. 41.00-42.00;
BULLS: few Medium Frame No. 1 525/950 lbs. 35.00-41.00.
CALVES 149...VEALERS: few Good 140/180 lbs. 60.00-70.00, Standard and Good 75/100 lbs. 20.00-35.00, Utility 45/75 lbs. 10.00-20.00.
FARM CALVES: No. 1 Holstein bulls 90/125 lbs. 87.00-95.00, few 85 lbs. 50.00, No. 2 90/120 lbs. 65.00-78.00; few No. 2 Holstein heifers 90/120 lbs. 105.00-120.00. Few beef cross bulls and heifers 80/130 lbs. 36.00-75.00.
HOGS 398...BARROWS AND GILTS: US 1-2 220/250 lbs. 42.00-45.25 mostly 43.75-44.00, US 1-3 220/270 lbs. 40.00-41.50, US 2-3 220/270 lbs. 38.10-40.10.
SOWS: few US 1-3 300/425 lbs. 30.50-38.50.
BOARS: few 400/700 lbs. 22.50-25.50.
FEEDER PIGS 56...US 1-3 65/80 lbs. 26.00-29.00, US 2-3 30/60 lbs. 7.00-13.00. --- per head.
SHEEP 80...SLAUGHTER LAMBS: Choice 70/120 lbs. 80.00-91.00, Good and Choice 75/120 lbs. 70.00-80.00.
NEW CROP LAMBS: Choice 7085 lbs. 104.00-107.50.
SLAUGHTER SHEEP: 24.00-53.00.
GOATS 21...Few Large 49.00-80.00, few Medium 30.00-42.50, few Small 25.50-38.00, few Small Kids 3.00-6.00. --- per head.

Belleville Livestock

BELLEVILLE, PA
JANUARY 24, 1996

CATTLE 335... PDA ..Supply included 208 in the Dairy sale.
STEERS: few Low Choice 1150/1395 lbs. 59.50-60.25, few Select 49.00-53.50.
HEIFERS: few Select 46.75-51.75.
COWS: Breaking Utility and Commercial 30.50-32.25, couple 34.00, Cutter and Boning Utility 27.75-31.75, Canner and Low Cutter 23.00-28.00. Shells down to 17.50.
BULLS: one Yield Grade No. 1 1690 lbs. 35.00, one No. 2 1050 lbs. 31.75.
CALVES 85...VEALERS: Standard and Good 75/100 lbs. 33.00-40.00, few Utility 55/85 lbs. 27.00-32.00.
FARM CALVES: No. 1 Holstein bulls 90/125 lbs. 55.00-80.00, No. 2 85/110 lbs. 40.00-55.00. Few beef cross bulls and heifers 75/100 lbs. 40.00-55.00.
HOGS 47...BARROWS AND GILTS: few lots US 1-2 225/230 lbs. 41.25-42.00, few lots US 1-3 230/245 lbs. 37.00-42.00.
SOWS: few US 1-3 350/450 lbs. 30.00-40.00.
BOARS: one 26.25.
FEEDER PIGS 145...US 1-3 20/35 lbs. 16.00-24.00, 35/50 lbs. 26.00-35.00, 75/125 lbs. 38.00-50.00. --- per head.
SHEEP 18...SLAUGHTER LAMBS: Good and Choice 50/110 lbs. 84.00-112.00.
GOATS 5...Few Large 68.00-89.00. --- per head.
HOLSTEIN DAIRY COWS \$550.00-\$1325.00 mostly \$700.00-\$1100.00. --- per head.

North Jersey Livestock

Hackettstown, NJ
Report Supplied by Auction
Tuesday, January 23, 1996

CALVES .06-1.00.
COWS .08%-.38%.
EASY COWS .05-.25.
FEEDERS 300-600 LBS. .16-.74.
HEIFERS .17%-.57.
BULLS .20-.52.
STEERS .26%-.59%.
HOGS .25-.39.
ROASTING PIGS EACH 5.00-41.00.
SOWS .20-.27%.
SHEEP: .11-.80.
LAMBS EACH 22.00-8.00.
LAMBS PER LB. .60-1.35.
GOATS EACH 53.00-125.00.
KIDS EACH 9.00-80.00.
HIDES EACH 6.00-16.00.
TOTAL: 1026 HEAD.

Forney Longenecker
Vice President/Financial Consultant
Commodities

SMITH BARNEY 717-295-8914
800-441-1997

A Member of *TravelersGroup*

SMITH BARNEY INC.
29 East King Street
Suite 200
Lancaster, PA 17602-2852

**TOWN AND COUNTRY
POURED WALLS**

- Manure Pits
- Retaining Walls
- House Basements
- Trench Silo Walls



(215) 593-5794
Ask For Ike



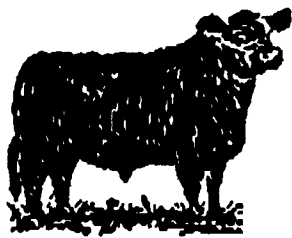
Hay And Straw Sales
Will Start At 10 A.M.
Every Wed.

GOOD'S AUCTION

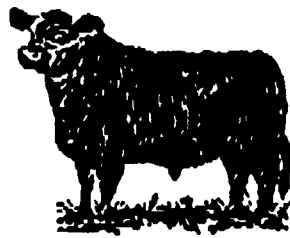
11 North Maple Ave.
Leola, PA 17540
717-656-8911
717-656-9558

**IF YOU'RE LOOKING FOR FEEDER CATTLE,
WE'RE LOOKING FOR YOU!**

We have groups of Angus, Baldie, Charolias Cross, Holstein and mixed breed steers with quality throughout! We have several groups of cattle consigned throughout Virginia and the Carolinas. And, as always, all of our cattle are inoculated for IBR-BVD and shipping fever and ready to go to work for you! The best part is that our cattle are:



PRICED TO MOVE



Before you order from anyone else, give us a call and we'll do our best to beat any price. We want to work for you!

Call today for information on the cattle you need!

We Stand By The Cattle We Sell!



Willier, Incorporated

610 WATER EDGE ROAD, LITITZ, PA USA 17543-8777
PHONE: (717) 626-3113 • FAX (717) 626-1260