

Estimated Daily Livestock Slaughter

Under Federal Inspection

January 17, 1996

	CATTLE	CALVES	HOGS	SHEEP
TUESDAY (EST)	130,000	6,000	370,000	17,000
WEEK AGO (EST)	122,000	6,000	371,000	15,000
YEAR AGO (EST)	121,000	6,000	351,000	18,000
WEEK TO DATE (EST)	398,000	17,000	1,071,000	50,000
SAME PD LT WK (EST)	306,000	16,000	1,008,000	44,000
SAME PD LT YR (ACT)	374,000	17,000	1,011,000	52,000

PREVIOUS DAY ESTIMATED TUESDAY, STEER AND HEIFER 105,000, COW AND BULL 29,000.

SOURCE: USDA MARKET NEWS, WASHINGTON, D.C.

Central U.S. Carlot

Beef Report

January 17, 1996

Report supplied by USDA

USDA NATIONAL CARLOT BEEF REPORT (INCLUDES MAJOR PRODUCTION AREAS IN THE MIDWEST AND TEXAS) AS OF 3 P.M.

COW AND BULL CARCASS FOB OMAHA

6.0 LOADS REPORTED

COMPARED TO TUESDAY'S 3 P.M. REPORT: UTILITY AND BULL CARCASSES STEADY; CUTTR NOT ESTABLISHED. DEMAND AND OFFERINGS LIGHT.

UT, BRK 2-4 450 LBS. AND UP, 2.0 LOADS, RANGE 54.00, LATEST ESTB. MKT. 54.00.

UT, BNG 1-3 400 LBS. AND UP, 2.0 LOADS, RANGE 58.00, LATEST ESTB. MKT. 58.00.

CUTTER 1-2 350 LBS. AND UP, LATEST ESTB. MKT. 61.00-64.50 D.

BULLS YG1 500 LBS. AND UP, 2.0 LOADS, RANGE 79.00, LATEST ESTB. MKT. 79.00.

COW AND BULL CARCASSES CAF WEST COAST LOADS REPORTED

COMPARED TO LAST WEEK: MARKET FOR WEEK ENDED JAN. 12, 1996.

UT, BNG 1-3 400 LBS. AND UP, RANGE 63.00.

CUTTER 1-2 350 LBS. AND UP, RANGE 65.00.

BONELESS PROCESSING BEEF/ BEEF TRIMMINGS

164.0 LOADS REPORTED

FRESH 90% BONELESS BEEF STEADY TO 1.00 LOWER; 75% MOSTLY STEADY TO 1.50 HIGHER; 65% STEADY TO FIRM DEMAND AND OFFERINGS MOSTLY MODERATE. BEEF TRIMMINGS STEADY TO FIRM ON MOSTLY MODERATE DEMAND AND OFFERINGS.

FOB OMAHA BASIS

90% FR, 30 LOADS, RANGE 89.0-91.5, WT. AVG. 90.00.

90% FZ, RANGE 88.0, WT. AVG. 88.00 A.

85% FR, RANGE 83.5-84.5, WT. AVG. 83.77 A.

85% FZ, UNQUOTED.

75% FR, 20 LOADS, RANGE 66.0-68.5, WT. AVG. 68.00.

75% FZ, UNQUOTED.

65% FR, 9 LOADS, RANGE 57.0, WT. AVG. 57.00.

65% FZ, UNQUOTED.

50% FR, 73 LOADS, RANGE 40.00-41.00, WT. AVG. 40.26.

50% FZ, UNQUOTED.

50% BOX, UNQUOTED.

BULL 92-94, RANGE 104.00, WT. AVG. 104.00.

FOR EAST TX & OK

90% FR, 111 LOADS, RANGE 89.5-90.0, WT. AVG. 89.86.

90% FZ, UNQUOTED.

85% FR, UNQUOTED.

75% FR, 3 LOADS, RANGE 69.5, WT. AVG. 69.50.

75% FZ, 65% FR, 65% FZ, UNQUOTED.

CAF NORTHEAST AREAS

90% FR, 17 LOADS, RANGE 92.0-93.0, WT. AVG. 92.35.

90% FZ, UNQUOTED.

85% FR, UNQUOTED.

85% FR, 85% FZ, 75% FR, 75% FZ, 65% FR AND 65% FZ, UNQUOTED.

CAF WEST COAST BASIS

WEEK ENDED 1/12/96

90% FR, RANGE 92.5-93.0, WT. AVG. 92.63.

90% FZ, UNQUOTED.

85% FR, RANGE 82.0-83.0, WT. AVG. 82.33.

85% FZ, UNQUOTED.

75% FR, RANGE 65.0, WT. AVG. 65.00.

75% FZ, UNQUOTED.

New Holland Horses

New Holland Sales Stables

New Holland, PA

Monday, January 15, 1996

Report Supplied By Auction

109 HEAD. MARKET STRONGER. WORK HORSES: 860.00-1125.00. DRIVING HORSES 575.00-900.00. RIDING HORSES 415.00-975.00. REGISTERED RIDING 640.00-1525.00. KILLERS, 1 AT 910.00, HEAVY-WEIGHTS 730.00-835.00; LIGHT-WEIGHTS 485.00-660.00. PONIES 115.00-385.00. LARGE PONIES 450.00-485.00. COLTS 180.00-365.00.

National Egg Market

JANUARY 17, 1996

Prices were unchanged to higher in the Northeast and Midwest, and unchanged elsewhere. The market tone was fully steady to mostly firm. Retail demand was moderate to excellent, mostly good, and inter-dealer demand for ungraded eggs continued strong. Supplies were short to adequate, and any extra supplies continued to trade at premium prices. Breaking stock supplies were adequate to barely adequate for the mixed demand, and prices paid were higher. Spent hen offerings remained adequate for the unaggressive demand, and the trade sentiment was steady.

65% FR, RANGE 55.0-58.0, WT. AVG. 56.14.

65% FZ, UNQUOTED.

50% FR, RANGE 35.0-35.5, WT. AVG. 35.25.

50% FZ, UNQUOTED.

ABCDE AFTER QUOTES REPRESENTS DAYS SINCE LAST ACTUAL MARKET TEST. QUOTES ARE DROPPED AFTER 5 DAYS OF NO TEST OR BEFORE IF THEY NO LONGER REFLECT CURRENT MARKET CONDITIONS.

SOURCE: USDA MARKET, DES MOINES, IA.

New Holland Sales Stables

Goat and Sheep Sale

Monday, January 15, 1996

GOATS: 513 HEAD. BILLIES 75.00-120.00, FEW 120.00-150.00; MUTTON 75.00-80.00; NANNIES 50.00-65.00, FEW 65.00-75.00; YEARLINGS 55.00-80.00; KIDS 25.00-45.00, FEW 45.00-60.00.

SHEEP: 634 HEAD. ALL WEIGHTS, RAMS 30.00-30.00; EWES 30.00-60.00; YEARLINGS 60.00-85.00; 2 YEAR-OLDS 50.00-70.00.

LAMBS: 120 LBS. AND UP 80.00-95.00; 100-120 LBS. 95.00-117.00; 80-100 LBS. 105.00-120.00; 60-80 LBS. 105.00-125.00; 40-60 LBS. 100.00-120.00.

NEW CROP LAMBS 40-50 LBS. 130.00-175.00.

COUNTRY FARE RESTAURANT

Our customers say the Country Fare Restaurant...

- "is worth the drive"
- "has good food at good prices"
- "has a warm, relaxing atmosphere in the beautiful dining room"
- "has large portions"
- "is very clean"

Join your friends and neighbors at the Country Fare Restaurant

Bring in this ad for a 10% Discount on your menu selection Monday thru Thursday. Offer valid thru Feb. 29, 1996.

Located 1/4 Mile East of Rt. 501 on Rt. 422 Myerstown • (717) 866-9043

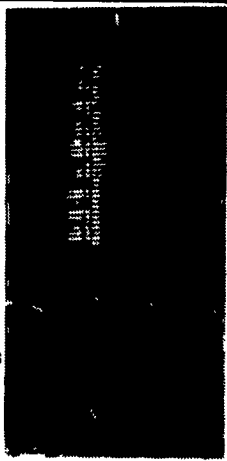
Farmer Boy Ag Systems Inc.

FEEDING

GSI Feed Bins

We assemble, deliver and set up bins on your farm.

- *Weather tight die-formed roof
- *Stronger engineered sidewalls
- *Ground controlled fill caps
- *Galvanized roll-formed legs
- *Engineered leg braced systems
- *Fast flowing hopper bottom

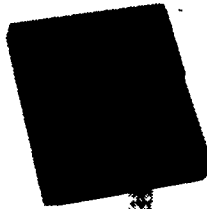


MONITORING SYSTEMS

Sensaphone 1104

Desktop Monitoring System

Environmental/Process monitoring over telephone lines with full programming capabilities.



ALERT Up to 4 Dial-out Numbers

DEODORIZERS

Pit and Lagoon Treatment

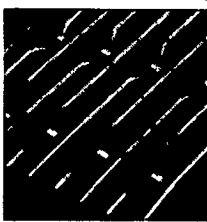
- Virtually eliminates odors
- Speeds suspension of solids for faster, easier and more complete pump-out
- Enhances fertilizer value of waste by reducing nitrogen loss
- Guaranteed results.



FLOORING



Woven wire is generally used for hog flooring but is not limited to this use. Elevator fencing, fork truck safety cages, wire



truck tailgates, etc. can also be made from the same construction. Call for your specific job needs.

- Excellent for farrowing/nursery pigs
- Does not retain bacteria
- No extra charge for custom size
- Surface is non-porous
- Easy cleaning
- Low cost flooring

HEATING

PHILIPS Par Heat Lamps

175 W - 30% wattage reduction. Savings of over \$37 over the life of the lamp Standard 125 to 250 Watt Available



SCALES

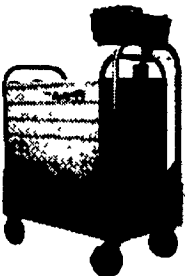
500 Animal Scale

This rust resistant steel scale is used for weighing up to the largest hog. The entire unit serves as the weighing area so that an animal leaning on the sides won't prevent an accurate reading.



Litter Scale

An entire litter can be placed in the portable WayPig at one time. The new oversize scale gives a clear readout of the weight in pounds and kilograms. The compact design allows it to glide easily through aisles and around tight corners.



Full Line of Parts in Stock For Your Poultry and Hog Needs

Hours: Mon thru Fri 7 - 5 Sat 7:30 - 12 Noon

Farmer Boy Ag Systems Inc.

410 East Lincoln Avenue, Myerstown, PA 17067 717-866-7565 • 1-800-845-3374 • FAX 717-866-6233

Check Our Warehouse Prices



1996 PENNSYLVANIA CROP CONFERENCE

The Embers Inn and Convention Center Carlisle, Pennsylvania

January 30, 1996 9 a.m. to 4 p.m.

- The Farm Bill and Pennsylvania Crop Producers
- Forage Crop Production Reducing the labor associated with baling hay Is Grazing for you?
- Corn Production Using Combine Yield monitors on Pennsylvania Farms Alternative strategies for marketing grain
- Designer Crops: Wave of the future
- Soybean Production Soybean checkoff dollars at work - John Becherer, CEO, United Soybean Board Control Options for Black Nightshade in Soybeans New options for managing weeds in soybeans

- 5 acre Corn Club Awards
- Soybean Yield Contest Awards
- Certified Crop Advisor Credits will be available for most sessions.

REGISTRATION: Please complete and return this registration form by January 23, 1996.

Mail to: PMCGA P.O. Box 304 State College, PA 16804

Total enclosed \$ _____ Make check payable to PMCGA.

Pre-registration (lunch included)

- Association members: \$15
- Nonmembers: \$20

Name _____

Address _____

City _____

Memberships

- Pa. Master Com Growers Association: \$30
- Pa. Forage and Grassland Council: \$10
- Mid-Atlantic Soybean Association: \$30

State _____ Zip _____

Phone _____

or call Penn State Department of Agronomy at 814-865-2543

Sponsored By:

Pennsylvania Master Corn Growers Association Pennsylvania Forage and Grassland Council Pennsylvania Soybean Board Penn State Cooperative Extension