

CONGRATULATIONS

To The

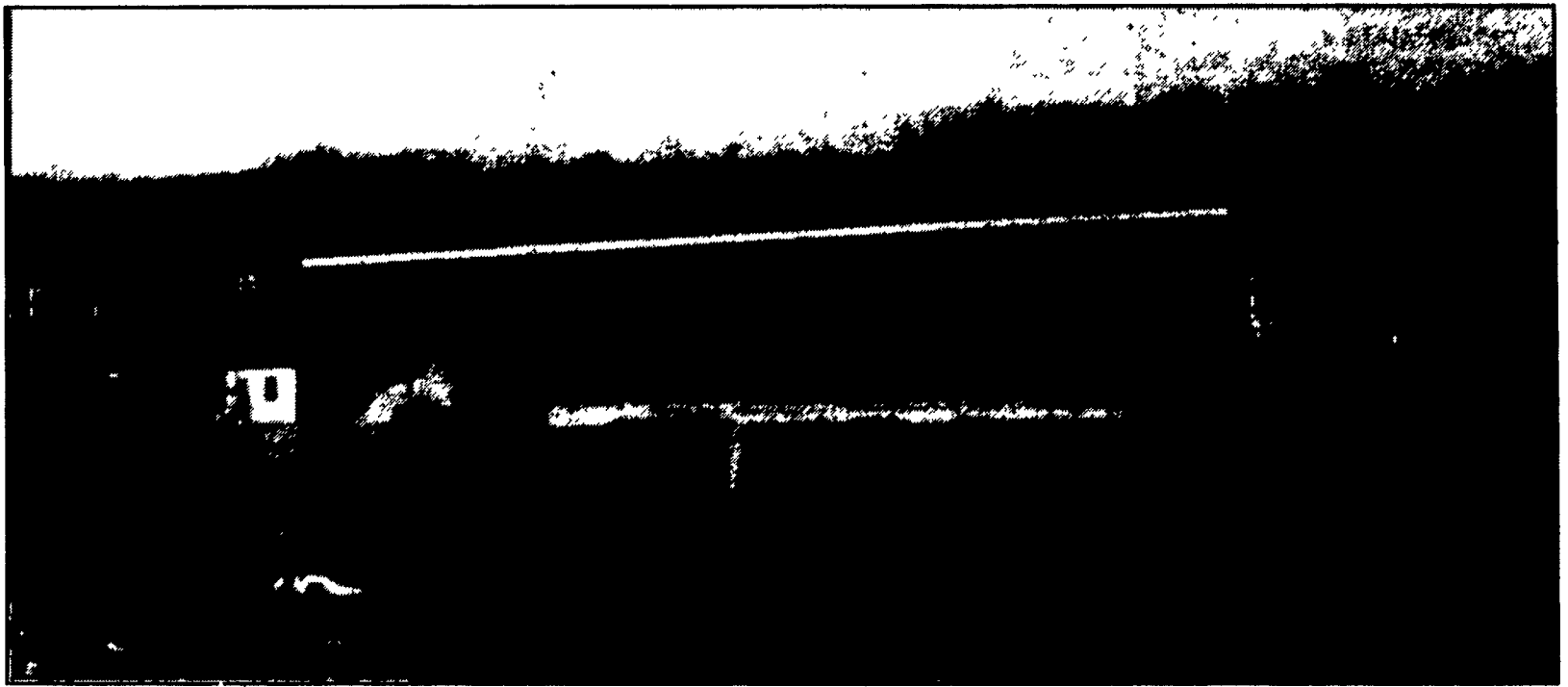
WARREN GOOD FAMILY

Bethel, PA

on their all new

40'x134' "Waffle Slat", "Bedded Pack"

"Bird Free" Heifer Building



Building By:

J. B. CONSTRUCTION

395 Bowers Road
Kutztown, PA 19530
610-682-1718

Agricultural/Residential Contractors
Excavation, Ponds, Pits, Hauling

**Poured Concrete
Manure Pit by**

Snyder's Construction Co.

210 Fry Road, Fleetwood, PA 19522
610-944-6055

Paul B. Zimmerman

**Headlocks, Gates, Stalls and Gutter
Grates and Lapp's Curtain Ventilation by**

Lapp's Barn Equipment

5935 Old Philadelphia Pike, Gap, PA 17527
717-442-8134

Laminated

Posts and Beams by

Rigidply Rafters, Inc.

701 E. Linden Street, Richland, PA 17087
717-866-6581

Concrete Waffle Slats by



477 East Farmersville Rd.
New Holland, Pa. 17557
(717) 355-2361

- H & J Bunks
- Bunker Silos
- Concrete Post & Beams
- Hog & Cattle Slats
- Concrete Hog Penning

