

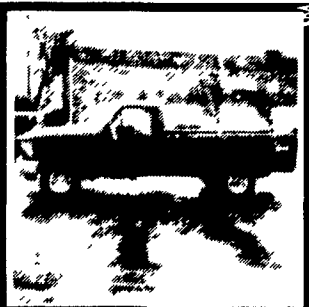
# TRUCKS

The Best Selection of New & Used Trucks Is At Pennsylvania's Leading Truck Source

## NEW HOLLAND FORD



**NEW 1996 FORD F-150 4X2 PICKUP** **SAVE OVER \$2400!**  
 4.9L 6 cylinder engine, 5-speed transmission, power steering & brakes, air conditioning, FM/AM stereo, argent step bumper, pinstripes & more! #F6012  
**NOW ONLY \$13,998**



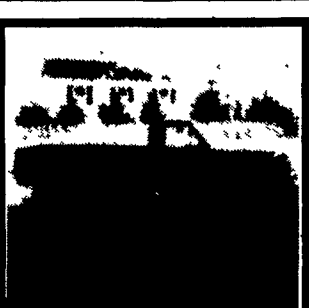
**NEW 1996 FORD F-150 4X4 PICKUP** **SAVE OVER \$1251!**  
 4.2 liter 6-cyl engine, 4 wheel drive, 5-speed transmission, air conditioning, power steering & brakes, stereo cassette, XL trim, argent step bumper, pinstripes & much, much more! #F6009  
**NOW ONLY \$17,319**



**NEW 1996 FORD E-250 SUPER CARGO VAN**  
 5.8 liter V8 engine, automatic/overdrive trans, power steering & brakes, air conditioning, stereo cassette, sliding cargo door, swing-out side glass and much more! #F6078  
**NOW ONLY \$19,519**



**1993 FORD F-150 XLT**  
 V8, air cond, pwr wind & locks, cruise, tilt wheel, chrome wheels, super sharp! Look at this price, it is NOT a misprint!!! #F4816C  
**NOW ONLY \$9987**



**1989 FORD F250 HEAVY DUTY XLT PICKUP**  
 351 V8, auto trans, air cond, cruise, tilt, FM/AM stereo, one owner, low, low miles, a hard to find truck, must see to appreciate! #F6266A  
**NOW ONLY \$10,995**



**1990 FORD F-350 UTILITY BODY**  
 351 V8, automatic trans, ps/pb, AM/FM, one owner, low, low miles, half the cost of new! Excellent condition! #F6139A  
**NOW ONLY \$13,950**

**New Holland FORD & ISUZU TRUCKS**  
 Route 23, New Holland PA  
**717-354-4901 • 800-642-8605**



## BOWERS

USED CARS INC.

Route 30 West of Abbottstown, PA  
 7015 York Rd. 717-624-7072



**89 CHEV EXT C-30 DUALY SILVERADO**  
 Auto, PS Loaded, 63,000 Miles  
**\$14,900**



**JOHN DEERE SKID LOADER**  
 1250 Isuzu Diesel Mechanical A-1 Wgt Line for Backhoe  
**\$7,500**



**89 FORD F350 BUCKET TRUCK**  
 85,000 Miles Nice Condition  
**\$7,995**



**89 FORD F350 12' STAKE TRUCK**  
 460 4 Spd PS PB 65,000 Miles  
**\$10,900**



**85 FORD F250 4x4**  
 V-8 Auto PS PB Mint Cond  
**\$6,495**



**78 CHEV C-65 ROLL-BACK**  
 20 Jerr-Dan New Was \$11,500  
 Detroit Diesel 5+2 GVW 27,500  
**NOW \$9,500**



**88 FORD F350 CREW CAB**  
 7.3 Diesel 4x4 PS PB AC Mint Cond  
**\$12,900**



**89 CHEV 3/4 SURBAN 4x4**  
 Diesel Loaded  
**\$10,900**

### INTERSTATE TRAILER SALES

PRE-OWNED TRUCKS	PRE-OWNED CARS	PRE-OWNED MPV'S
'94 CHEVY 2500 S/CAB 4x4, A/C, 5, Spd, Silverado	'88 TEMPO ALL WHEEL DRIVE AT, A/C, Winter Ready	'94 CHEVY S-10 BLAZER Tahoe, A/C, A/OD, 21,000 Miles
'84 CHEVY 1-TON STEP VAN V-8, A/T, 82,000 Miles	'92 SATURN SL2 A/C, A/OD, Cruise & Tilt, Roof	'94 AEROSTAR ALL-WHEEL DRIVE XLT, Extended Length, Dual A/C
'76 IH DUMP TRUCK w/Spreader & Snow Plow, 42,000 Miles	'94 VW PASSAT SW, A/C, 5 Spd, 1-Owner	'89 BRONCO II XLT V6, A/OD, A/C, 2-Tone
'92 FORD F150 4x4, XLT V8, A/C, A/OD, 44,000 Miles	'95 LINCOLN TOWN CAR Signature Series, Leather & More	'90 JEEP CHEROKEE 6 Cyl., 5 Spd., A/C & More
'94 TOYOTA 4x4, 6 CYL. 5 Spd, A/C, 19,000 Miles	'95 SABLE GS SDN A/C, A/OD, Power Equip, Low Miles	'92 JEEP CHEROKEE LARADO 4 Dr., 6 Cyl., A/OD, A/C, Loaded
'94 FORD F150 4x4 S/CAB XLT, A/C, V8, A/OD & More	'91 MERCURY TRACER SDN A/C, A/OD, 1-Owner, 46,000 Miles	'94 CHEVY CONVERSION VAN Hi-Top, Dual A/C & Heat & More
'93 CHEVY S-10 S/CAB, 4x4 Tahoe, 6 Cyl, A/OD, A/C, 42,000 Miles	'93 GRAND MARQUIS LS Sdn, V8, A/OD, A/C & More	'93 FORD CONVERSION VAN V8, A/OD, Hi-Top, 2-A/C & More

## ENGLE-RISSINGER AUTO GROUP

MIDWAY BETWEEN HALIFAX AND MILLERSBURG • 717-896-3421 • 1-800-242-8075

HOURS: MONDAY-FRIDAY 8:30 AM - 8:30 PM; SATURDAY 8:30 AM - 3:00 PM

ALL STEEL REPLACEMENT TRUCK BED



7'Lx71"W or 85"W  
 8 1/2' Lx80"W or 90"W  
 10'Lx8"W, 12'Lx8"W

Also Available in 4'x7' and 4'x8'

5'x8' Starting at \$650  
 5'x10' Starting at \$695



UTILITY (TILT OR GATE MODEL) SIZES:  
 5'x8', 5'x10' 2000# GVW - 5'x10', 6'4"x10', 6'4"x12', 3000# GVW



UTILITY WITH GATE-SIZES:  
 16'x76", 18'x76", 7,000# GVW, 20'x81" 12,000# GVW

Also Available in Car Haulers 18', 18' 7,000# GVW



FLAT BED: Sizes: 16'x76", 18'x81" 7000# GVW, self storing 80" long ramps

STARTING AT \$795.00



Car Dollie

HIGHWAY HYDRAULIC DUMP



5'x8', 3000# \$2,050  
 6'x10', 7,000# \$3,095  
 6'x10', 10,000# \$3,495  
 7'x12', 10,000# \$3,995



DROP AXLE CONSTRUCTION  
 14' 7000# or 12,000# GVW



GOOSENECK SIZES: 20'x8' 12,000# or 14,000# GVW, 24'x8' 14,000# GVW



DECK-OVER CONSTRUCTION  
 18'x8' w/Tail 10,000# GVW \$2,995 & \$3,295

Over 400 Trailers In Stock Starting At \$475.00 T-Plates DEALERS WANTED

KUTZ FARM EQUIPMENT, INC.  
 Pine Grove, PA 717-345-4882

SALES MONDAY TO FRIDAY  
 SALES SATURDAY OR BY APPOINTMENT