

Supreme Swine Is 'Big, Stout, Lean Red Hog'

ANDY ANDREWS

Lancaster Farming Staff
HARRISBURG (Dauphin Co.)
— A "big, stout, lean red hog" caught the eye of Pennsylvania Farm Show Bred Gilt Show judge Clyde Shaffer, Albany, Ind. last week.

The champion Duroc gilt, MS Gambler, was a March gilt shown by David C. Holloway, Glen Rock.

Shaffer said gilts must not only provide a good product in the meat case, but be "a good momma." This translates into nutrition, TLC (tender loving care), and doing whatever necessary to produce a desired product, according to Shaffer.

Shaffer picked champions of several other breeds last week at the Farm Show.

Berkshires

Shaffer said that the Berkshire breed "leads the whole nation in meat quality."

"Meat quality is going to be a tremendous, tremendous issue," he said. Shaffer pointed out that the Berkshire breed is "number one" in that area as proof on the kill sheets.

Shaffer chose the February gilt, TLB2 MS Klondike Bars, exhibited by Todd and Cheryl Bennecoff, Kutztown, as champion of the breed.

He said the hog exhibited an "excellent underline" with exceptional length of body. It was a "big hog" that was lean with a lot of muscle. Shaffer chose the champion's littermate, exhibited by the Bennecoffs, as reserve.

Shaffer said the industry is moving to bigger hogs, to 260-265 pounds at finish, which will present a challenge to swine breeders.

Chester Whites

Shaffer said the "backbone" of the industry comes from the purebred breeders. For champion Chester White, he chose a hog that was longest, with the most muscle expansion, "excellent in underline and lean down the top — leaner than anything I've seen in here today."

He chose the February gilt shown by Scott Lazarus, Germansville, as champion. The champion, SLI5 Payday's Special, was "an outstanding female." Reserve went to the February gilt reserve champion shown by James Parlett, Airville, TM5 Dame T. III.

Durocs

Shaffer selected the March gilt shown by David C. Holloway, Glen Rock. The champion gilt, MS Gambler, was a "big, stout, lean red hog," said Shaffer.

Reserve champion went to the February gilt shown by Betty Holloway, MS Gambler. Shaffer said the hog was "really level, really long, really athletic in movement."

Hampshires

Size and scale define a champion gilt, according to Shaffer. With that in mind, he chose Donna and J.C. Strawbridge's March gilt, STR5 Rowdy's Buck, as grand champion.

After hearing the judge's reasons, Strawbridge, from Whitehall, walked to the gates and tried to hold back tears while others came to hug and congratulate her for her prize hog.

Shaffer told those at the show to continue to breed the hogs and progress the industry and "go down the road." He then selected a February gilt shown by Ken Winebark Family, Myerstown, KLW5 Beyond Belief, to reserve

champion.

Landrace

Shaffer admired a hog that is "really level in her top with really tremendous movement, an athletic hog" as grand champion in the Landrace breed. The "outstanding female" that would exhibit tremendous "production and longevity" was shown by Grant Lazarus III, from Germansville. LAG5 Aris Nancy D, a February gilt, became champion Landrace.

The reserve, a February gilt shown by George Paul Billig, New Tripoli, BGP5 Ms Warrior's Unique, could "be one of the most exciting hogs the Landrace breed has had in a long time," said Shaffer.

Polands

CAB5 Ms Concrete, shown by Cheryl Bennecoff, Kutztown, a January gilt, exhibited "the most extension, with a taller and bigger frame" than any others in the Poland China contest.

Bennecoff swept the show, winning reserve with CAB5 Ms Stormin, a March gilt.

Spotted

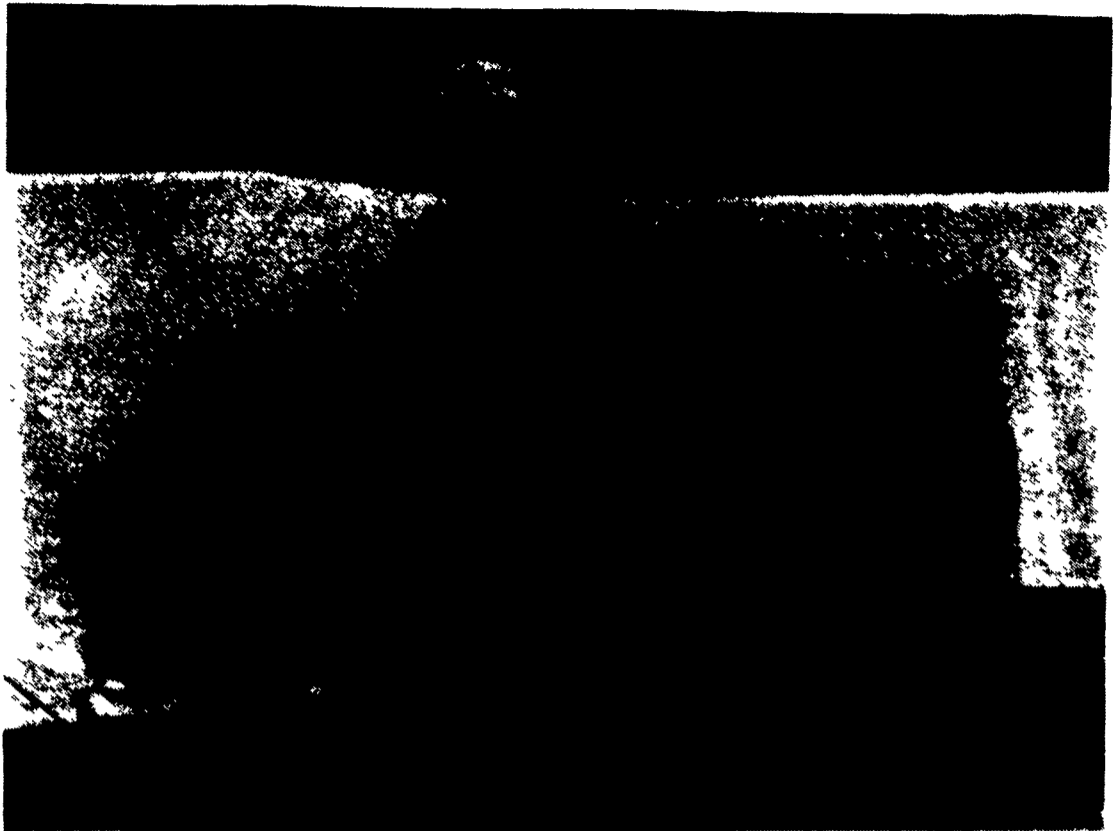
Gilts that exhibit the "most length of body and who are leanest down the top" will win championships.

In this case, Spotted champion went to Lazarus Brothers, Germansville, for their February gilt, LLB5 Justice.

The reserve champion went to a February reserve gilt, RA5 Beauty, shown by Russell and Ginger Kegg, Bedford.

Yorkshires

At the end of the last class in the Yorkshire competition, Shaffer



Supreme champion gilt at the 1996 Farm Show was this Duroc shown by Dave Holloway, Glen Rock, at the bred gilt show last week.

told the exhibitors to get "pictures of these hogs to promote your product."

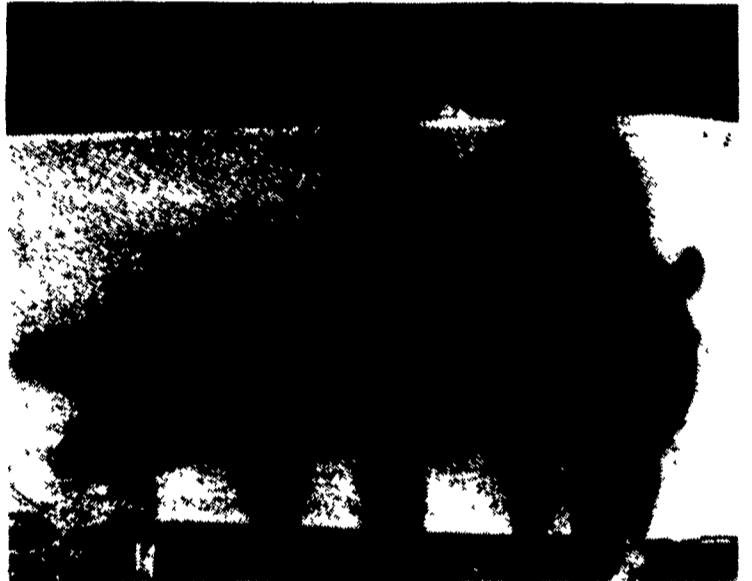
He said pictures will allow them to show to others what is being done to promote the industry.

A gilt that was level in top and "carried herself well" became champion. The January gilt, CBH5 Jennie, was shown by Charles Hall, Rattlesnake Mt. Farm, Julian.

The reserve, which won reserve January gilt, was also shown by Rattlesnake Mt. Farm, CBH5 Jannie, littermate to the champion.

In all, there were a total of 145 hogs and 28 exhibitors.

(Turn to Page B16)



Reserve champion Berkshire gilt was shown by the Bennecoffs. From left, Justine and Todd.



Ken Winebark exhibited the reserve champion Hampshire gilt at the Farm Show.



Dave Holloway exhibited the reserve champion Duroc at the Farm Show last week.



Reserve champion Spotted gilt at the Farm Show went to Ginger Kegg.



Champion Berkshire was shown by the Bennecoff family. From left, Justine and Todd Bennecoff.