

LANCASTER COUNTY LIVESTOCK MARKET AUCTION

Because of the recent snowstorm, most Lancaster markets were cancelled. Instead, some of last week's market reports are provided.

Lancaster Livestock

LANCASTER, PA
JANUARY 4, 1996
Cattle Calves Hogs Sheep Goats
WEDNESDAY'S AUCTION
499 35 810 376 331
LAST WEDNESDAY
620 9 1224 363 257
LAST YEAR

581 61 566 607 467
CATTLE: Slaughter steers steady; slaughter heifers fully steady; small supply cows fully steady; bullocks and bulls not fully tested. Supply included 62 percent slaughter steers, 11 percent slaughter heifers, 7 percent cows, 3 percent bulls, with the balance feeders.

SLAUGHTER STEERS: Choice 2-3 few 4 1090-1480 lb 65.10-67.10; one lot Choice 3-4 1580 lb 64.75; Select and low Choice 2-3 1050-1400 lb 59.85-64.75.

HOLSTEINS: High Choice and Prime 2-3 1350-1550 lb 57.75-59.75; Choice 2-3 1350-1550 lb 54.75-58.00; few Select 1-2 1250-1475 lb 50.00-54.75.

SLAUGHTER HEIFERS: Choice 2-3 1075-1360 lb 62.00-64.85; few Choice 2 1160-1375 lb 65.25-67.00; one lot Select 1005 lb 58.35.

COWS: LOW DRESSING BULK HI DRESSING Breaking Utility and Commercial 2-3 few 33.50-35.75 Cutter and Boning Utility 1-2 few 31.00-34.00

BULLOCKS: Couple Select 1-2 070-1280 lb 42.50-50.00.

BULLS: Couple Yield grade 1 1285-1380 lb 50.00-52.00; few Yield grade 1-2 1450-1800 lb 39.50-45.50.

CALVES: Vealers not tested; slaughter calves fully steady.

SLAUGHTER CALVES: Good and Choice 200-325 lb 55.00-68.00, 325-475 lb 38.00-44.00, with 500-650 lb 48.00-52.00.

HOGS: Barrows and gilts 1.00-2.00 lower, instances 3.00 lower on US 1-2. US 1-2 220-250 lbs 43.25-43.75 US 1-3 220-265 lbs 42.50-43.25 US 2-3 260-295 lbs 40.00-41.00

SOWS: Mostly steady. US 1-3 350-500 lbs 32.00-500-650 lbs 35.00

BOARS: 350-600 lbs 24.50 Few 230-300 lbs 26.00-27.50

SHEEP: Slaughter lambs firm to 5.00 higher; slaughter ewes fully steady. Supply included 80 percent slaughter lambs with the balance slaughter ewes.

SLAUGHTER LAMBS: Choice 1-2 60-85 lb 100.00-120.00, 85-105 lb 98.00-110.00, 110-135 lb 85.00-90.00.

SLAUGHTER EWES: Choice 1-3 55.00-65.00; Utility and Good 2-3

Vintage Livestock

PARADISE, PA
JANUARY 2, 1996
Cattle Calves Sheep Goats
TODAY
862 995 3 0
LAST TUESDAY
627 767 5 0
LAST YEAR

662 1072 0 2
CATTLE... USDA ... Supply included 25% slaughter steers and 67% cows ...sl. steers uneven, few Choice and Prime 2-3 near steady, bulk weak to mostly 1.00 lower, small supply sl. heifers .50 to 1.00 lower, cows .50 to 1.00 lower, bullocks scarce, bulls not fully tested.

SLAUGHTER STEERS: few Choice 2-3 1175/1400 lbs. 68.25-69.25, couple 70.00-71.50, Choice 2-3 few 4 1150/1450 lbs. 65.00-67.50, few 67.50-68.00, 1450/1550 lbs. 62.75-64.25, Select and Low Choice 2-3 1075/1450 lbs. 61.00-65.00, Select 1-3 1050/1375 lbs. 57.00-61.00.

HOLSTEINS: Choice 2-3 1200/1560 lbs. 54.85-57.50, 10 head 1675/1760 lbs. 56.25-56.85, Select 1-2 1100/1350 lbs. 50.25-53.50, few Standard 1050/1275 lbs. 45.00-49.00.

HEIFERS: Choice 2-3 1025/1165 lbs. 61.75-63.75, one Choice 2 1265 lbs. 65.50, one Select 2-3 1100 lbs. 58.60.

COWS: Breaking Utility and Commercial 2-3 bulk 34.50-38.75, high dressing 39.00-40.25, Cutter and Boning Utility 1-3 low dressing 31.00-33.00, bulk 33.00-36.00, high dressing 36.00-38.00, Canner and Low Cutter 1-2 low dressing 23.50-29.00, bulk 29.00-31.25.

BULLS: couple Yield Grade No. 1-2 1435/2210 lbs. 40.25-42.50.

CALVES...Vealers steady. Supply included 884 in graded sale of which 93% sold to return to farm.

VEALERS: couple Choice 160/335 lbs. 80.00, High Good and Low Choice 130/280 lbs. 45.00-65.00, 80/110 lbs. 25.00-37.00, Standard and Low Good 70/85 lbs. 20.00-25.00, few 60/65 lbs. 10.00-15.00.

RETURNED TO FARM: 420 head 90/125 lbs. Holstein bulls 105.00-120.00, 45.00-55.00.

GOATS: All goats sold by the head. Billies: Medium 80.00-100.00. Nannies: Large 75.00-90.00; Medium 60.00-75.00. Kids: Choice and Prime 50.00-60.00; Good 40.00-50.00.

Lancaster Livestock Auction

Wednesday's market report has been discontinued until further notice because of insubstantial receipts.

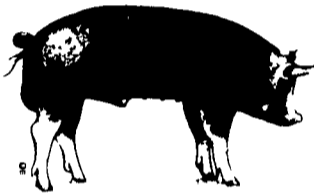
VA Feeder Sales

HARRISONBURG, VA
JANUARY 10, 1996
Feeder Cattle 215 Head. Steers: 120 head Medium & Large 1 300 - 400 55.00-65.00 400 - 500 55.00-66.00 500 - 600 55.00-58.00 600 - 700 55.00-64.00 700 - 800 52.00-56.00

HARRISONBURG, VA
JANUARY 10, 1996
Feeder Cattle 565 head Steers 210 head Med & Large 1 SML 1 Med & Large 2 300 - 400 50.00-56.50 400 - 500 54.00-62.00 41.00-48.00 49.00-56.00 500 - 600 53.00-61.50 40.00-47.50 47.00-54.00 600 - 700 50.00-55.00 38.00-45.00 46.00-52.00 700 - 800 50.00-53.50 800 - 900 50.00-53.00 900 -1000 48.00-51.50

30 head 85 lbs. 42.00-46.00, and 15 head 80 lbs. 30.00, 95 head small frame 100/120 lbs. 62.00-80.00, and 1 85 head 90/95 lbs. 36.00-41.00; 85 head 80/115 lbs. Holstein heifers 117.00-137.00 and 15 head small frame 70/75 lbs. 30.00.

SHEEP...NO MARKET TEST!
GOATS...NO MARKET TEST!



LEBANON VALLEY LIVESTOCK MARKET, INC.

1 mile East of Fredericksburg along Rt. 22

PHONE
JONESTOWN
(717) 865-2881

Flea Market Auction every Tuesday at 12:30. Tools, Eggs, Produce, Etc. Buyers & Sellers Welcome

B&R CATTLE CO.

RD 1, Marietta, PA 17547
Office Phone: (717) 653-8164

Specializing in Stockers & Feeders

JOHN BOWMAN ph. (717) 653-5728
RON RANCK ph. (717) 656-9849

New Holland Livestock

LANCASTER, PA
JANUARY 4, 1996
Cattle Calves Sheep Goats
TODAY
1093 632 157 92
LAST FRIDAY
1447 770 476 456
LAST YEAR

1110 544 237 256
CATTLE: Slaughter steers fully steady, few sales 50 higher; slaughter heifers steady; cows firm to 1.00 higher; bullocks and bulls mostly steady. Supply included 38 percent slaughter steers and 51 percent cows.

SLAUGHTER STEERS: Choice 2-3 few 4 1100-1460 lb 65.50-67.75, few 68.00-68.75; few Choice and Prime 2-3 1200-1375 lb 68.50-70.00; Select and low Choice 2-3 1050-1525 lb 59.75-65.25; Select 1-2 1050-1350 lb 55.00-56.00; few Standard 1150-1250 lb 53.00-57.00.

HOLSTEINS: High Choice and Prime 2-3 1250-1650 lb 57.75-59.60; Choice 2-3 1200-1650 lb 55.00-57.85; Select 1-2 1100-1400 lb 52.00-54.50.

SLAUGHTER HEIFERS: Choice 2-3 1100-1200 lb 62.25-62.75; Select 1-2 975-1200 lb 58.50-60.85.

COWS: LOW DRESSING BULK HIGH DRESSING Breaking Utility and Commercial 2-3 34.00-39.00 39.50-42.50 Commercial 3-4 31.50-35.00 Cutter and Boning Utility 1-3 31.75-33.50 33.50-37.50 Canner and low Cutter 1-2 26.50-29.00 29.00-32.50

BULLOCKS: Choice 2-3 1200-1500 lb 54.50-58.50, few 60.00-63.60; Select 1-2 1050-1300 lb 50.50-54.50.

BULLS: Yield grade 1 1200-2100 lb 40.50-44.50; Yield grade 2 1050-1650 lb 36.00-40.00.

CALVES: Vealers steady. Demand good for Holstein bulls and heifers to return to farm.

VEALERS: Choice 150-310 lb 86.00-91.00; high Good and low Choice 215-395 lb 59.00-77.00, 80-110 lb 27.00-38.00; several Good 140-265 lb 36.00-50.00; Standard and low Good 60-80 lb 12.00-25.00.

SLAUGHTER CALVES: Couple Choice 430-480 lb 49.00-53.00.

RETURNED TO FARM: Bulk 90-120 lb Holstein bulls 100.00-128.00, few 129.00-134.00, 80-90 lb 75.00-100.00; small frame 90-110 lb 70.00-100.00, 70-85 lb 37.00-65.00; few 90-115 lb Holstein Heifers 110.00-130.00.

SHEEP: Slaughter lambs and slaughter ewes steady. Supply included 80 percent slaughter lambs with the balance slaughter ewes.

Lancaster County Weekly

LANCASTER, PA
JANUARY 5, 1996

Cattle Calves
THIS WEEK
2500 1660
LAST WEEK
2694 1546
LAST YEAR
2619 1500

CATTLE: Slaughter steers steady to 50 lower; slaughter heifers steady; cows steady; bullocks and bulls fully steady. Supply included 38 percent slaughter steers, 6 percent slaughter heifers, 47 percent cows, 2 percent bulls, with the balance feeders.

SLAUGHTER STEERS: Choice 2-3 few 4 1090-1480 lb 65.00-67.75, few 67.75-68.75; Choice and Prime 2-3 1175-1450 lb 68.00-70.00; few Choice 3-4 1450-1550 lb 62.75-65.50; Select and low Choice 2-3 1075-1450 lb 59.75-65.25; Select 1-2 55.00-61.00.

HOLSTEINS: High Choice and Prime 2-3 1250-1650 lb 57.75-59.75; Choice 2-3 1200-1650 lb 54.75-58.00; Select 1-2 1150-1350 lb 50.00-54.75.

SLAUGHTER HEIFERS: Choice 2-3 1025-1360 lb 61.75-65.00; couple Choice 2 1200-1350 lb 65.25-67.00; Select 1-3 1000-1200 lb 58.00-61.00.

COWS: LOW DRESSING BULK HIGH DRESSING Breaking Utility and Commercial 2-3 34.00-39.00 39.50-42.50 Cutter and Boning Utility 1-3 31.00-33.00 33.00-37.50 Canner and low Cutter 1-2 24.50-29.00 29.00-32.50

BULLOCKS: Choice 2-3 1200-1500 lb 54.50-58.50, few 60.00-63.60; Select 1-3 1050-1300 lb 49.00-54.50.

BULLS: Yield grade 1 1200-2100 lb 40.50-45.50, couple high dressing 50.00-52.00; Yield grade 2 1050-1800 lb 36.00-41.00.

CALVES: Vealers and slaughter calves steady. Demand good for Holstein bulls and heifers to return to farm.

VEALERS: Choice 150-310 lb 86.00-91.00; high Good and low Choice 215-395 lb 59.00-77.00, 80-110 lb 27.00-38.00; several Good 140-265 lb 36.00-50.00; Standard and low Good 70-80 lb 20.00-25.00, few 60-65 lb 10.00-20.00.

SLAUGHTER CALVES: Good and Choice 200-480 lb 53.00-68.00, 325-475 lb 38.00-50.00, few 500-650 lb 48.00-52.00.

RETURNED TO FARM: Bulk 90-120 lb Holstein bulls 100.00-125.00, few 125.00-134.00, 80-90 lb 75.00-100.00; small frame 90-115 lb 60.00-100.00, 70-85 lb 30.00-65.00; few 90-115 lb Holstein heifers 110.00-137.00; few small frame 70-75 lb 30.00-50.00.

SLAUGHTER LAMBS: Choice 1-3 85-100 lb 100.00-108.00, 55-80 lb 112.00-130.00.

NEW CROP LAMBS: Choice 40-50 lb 134.00-174.00.

SLAUGHTER EWES: Choice 2-3 55.00-70.00; Utility and Good 1-3 35.00-57.00.

HAY, STRAW, & CORN — SALE —

Sale Starts Every Friday At 10 AM

GREEN DRAGON MARKET & AUCTION

955 N. State St. Ephrata, Pa. (717) 738-1117
1 mile North of Ephrata on N. State St.
Out of State Buyers-Cash or Certified Check Only



B&R CATTLE CO.

RD 1, Marietta, PA 17547
Office Phone: (717) 653-8164

Specializing in Stockers & Feeders

JOHN BOWMAN ph. (717) 653-5728
RON RANCK ph. (717) 656-9849

LEBANON VALLEY LIVESTOCK MARKET, INC.

1 mile East of Fredericksburg along Rt. 22

PHONE
JONESTOWN
(717) 865-2881

Flea Market Auction every Tuesday at 12:30. Tools, Eggs, Produce, Etc. Buyers & Sellers Welcome

QUALITY FEEDER CATTLE

Financing Available
* Fixed Interest Rates • Interest Due when Cattle Are Sold
• No Monthly Payments

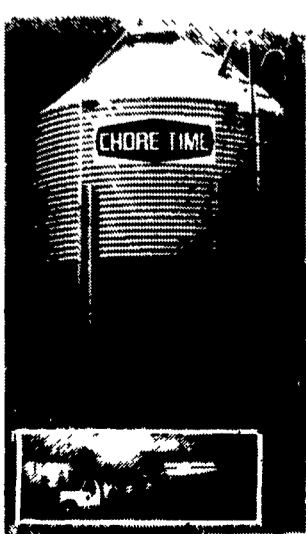
SCARFF BROS. INC.

Cattle Dealers • Licensed & Bonded
2300 Fallston Road • Fallston MD 21047

Lance N. Scarff Farm (410) 877-0370 Fax (410) 877-7802	C. Howard Scarff, II Home (717) 445-4355 Fax (717) 445-7237 Mobile (717) 940-2633	W. Conly Scarff Home (410) 838-5883 Mobile (410) 790-2650
--	--	---

• Contract Feeding Programs • Marketing of Finished Cattle • Dairy Heifers

Get more capacity and better service from Chore-Time's New Next Generation bin



High Capacity 40" roof (left) allows more storage and stays cleaner than conventional 30" roof (right)



Hydro-Shield™ Weather Guard prevents water from running down hopper



ACCESS PLUS™ permits easy clean out of the bin from the ground.

Contracts Available Call For Information

- Broilers
 - Breeder
 - Turkey
 - Hog Finishing
- Call For Our Free Brochure "What is Contract Production?"

Replace your bulbs and save electricity with
SCREW IN FLUORESCENT LIGHTS
5-7-9
Watts 5.49 ea. 13
Watts 5.79 ea.

Light Bulbs 25 to 100 Watts 34¢ Ea.
Brass Base - 5000 Hrs.

In Stock-36" & 48" Wide Kraft Paper • Made in USA

Northeast Agri Systems, Inc
Flyway Business Park
139A West Airport Road
Litz PA 17543
Ph (717) 569-2702
1-800-673-2580



VINTAGE SALES STABLES, INC.

SALE TUESDAYS

10:30 A.M.
SLAUGHTER CATTLE AUCTION-
STEERS, BULLS, HEIFERS,
COWS, FEEDER CATTLE

6:30 P.M.
CALVES, SHEEP, GOATS
GET CALVES IN EARLY-
OUR STATE GRADER
STARTS AT 10:30 A.M.

Selling Feeders Every Tuesday
At Approx. 1 PM

FOR MORE INFORMATION CONTACT

L. ROBERT FRAME, SR., PRESIDENT
BUS (717) 442-4181 BUS (717) 768-8204
HOME (215) 458-8518
IRWIN MARTIN, FIELD REP.
(717) 733-7434
KENNETH E. HERSHEY, FIELD REP.
(717) 442-4874

TRUCKING SERVICE
AVAIL-LOCAL &
LONG DISTANCE
(RT. 30, 10 MILES EAST
OF LANCASTER IN
PARADISE, PA)

