

Pa. Grain

December 26, 1995
Report supplied by PDA

COMPARED WITH LAST MONDAY'S MARKET FOR SOUTHEASTERN, CENTRAL, AND SOUTH CENTRAL PA: CORN AND OATS STEADY TO .25 HIGHER, WHEAT UNEVEN, MOSTLY STEADY TO STRONG, BARLEY STEADY TO STRONG, SOYBEANS STEADY TO .15 HIGHER, EAR CORN STEADY TO 5.00 HIGHER.

SOUTHEASTERN PENNSYLVANIA
CORN NO. 2-Y RANGE 3.63-3.97 FEW REPORTED 3.50, AVERAGE 3.77, CONTRACT FOR HARVEST 2.85-3.10; WHEAT NO. 2 RANGE 4.91-5.16, AVERAGE 5.03, CONTRACT FOR HARVEST 4.03-4.13; BARLEY NO. 3 RANGE 2.70-3.10 FEW REPORTED 2.30, AVERAGE 2.79, CONTRACT FOR HARVEST FEW REPORTED 1.90-2.00; OATS NO. 2 RANGE 2.00-2.25 FEW REPORTED 2.45, AVERAGE 2.20, CONTRACT FOR HARVEST FEW REPORTED 1.60; SOYBEANS NO. 1 RANGE 6.90-7.30, AVERAGE 7.18, CONTRACT FOR HARVEST 6.64-6.80; FEW REPORTED GR. SORGHUM #2 RANGE 3.53, AVERAGE 3.53; AVERAGE MOISTURE NEW EAR CORN RANGE 92.00-112.00, AVERAGE 101.50.

SOUTH CENTRAL PENNSYLVANIA
CORN NO. 2-Y RANGE 3.40-3.65 FEW REPORTED 3.80, AVERAGE 3.58; WHEAT NO. 2 RANGE FEW REPORTED 4.31-5.10, AVERAGE 4.75; BARLEY NO. 3 RANGE 2.25-2.80, AVERAGE 2.54; OATS NO. 2 RANGE 1.80-2.40 FEW REPORTED 1.50, AVER-

AGE 1.91; SOYBEANS NO. 1 RANGE 6.60-7.20 FEW REPORTED 6.40, AVERAGE 6.78; AVERAGE MOISTURE NEW EAR CORN RANGE 80.00-110.00, AVERAGE 92.71.

SOUTHEASTERN, CENTRAL & SOUTH CENTRAL SUMMARY
CORN NO. 2-Y RANGE 3.40-3.94, AVERAGE 3.67; WHEAT NO. 2 RANGE 4.85-5.16, AVERAGE 4.93; BARLEY NO. 3 RANGE 2.40-3.00, AVERAGE 2.65; OATS NO. 2 RANGE 1.75-2.40, AVERAGE 2.07; SOYBEANS NO. 1 RANGE 6.50-7.30, AVERAGE 6.95; AVERAGE MOISTURE NEW EAR CORN RANGE 80.00-112.00, AVERAGE 95.96.

CENTRAL PENNSYLVANIA
CORN NO. 2-Y RANGE 3.35-3.85, AVERAGE 3.58; WHEAT NO. 2 RANGE FEW REPORTED 4.60-4.90, AVERAGE 4.78; BARLEY NO. 3 RANGE FEW REPORTED 2.25-3.00, AVERAGE 2.56; OATS NO. 2 RANGE 1.75-2.35, AVERAGE 2.03; SOYBEANS NO. 1 RANGE 6.35-7.10, AVERAGE 6.62; AVERAGE MOISTURE NEW EAR CORN RANGE FEW REPORTED 80.00-100.00, AVERAGE 86.83.

WESTERN PENNSYLVANIA
CORN NO. 2-Y RANGE 3.20-3.60, AVERAGE 3.34; WHEAT NO. 2 RANGE 4.00-4.73, AVERAGE 4.48; BARLEY NO. 3 RANGE 2.50-2.57, AVERAGE 2.54; OATS NO. 2 RANGE 1.90-2.30 FEW REPORTED 1.70, AVERAGE 1.98; SOYBEANS NO. 1 RANGE FEW REPORTED 7.00, AVERAGE 7.00; AVERAGE MOISTURE NEW EAR CORN RANGE FEW REPORTED 80.00, AVERAGE 80.00.

MONTH AGO
CORN NO. 2-Y 3.35; WHEAT NO. 2 4.68; BARLEY NO. 3 2.20; OATS NO. 2

1.79; SOYBEANS NO. 1.646; AVERAGE MOISTURE NEW EAR CORN 82.81.

YEAR AGO
CORN NO. 2-Y 2.33; WHEAT NO. 2 3.81; BARLEY NO. 3 1.81; OATS NO. 2 1.57; SOYBEANS NO. 1.524; AVERAGE MOISTURE NEW EAR CORN 58.62.

National Grain Market

ST. JOSEPH, MO
DECEMBER 27, 1995

Some export disappointments and light profit taking offered slight weakness to wheat bids. Profit taking also drove corn and soybean bids moderately to sharply lower in reaction to weather improvement in South America. Wheat mostly 1 to 2 cents lower. Corn 1 to 3 cents lower. Sorghum 4 to 5 cents lower. Soybeans 7 to 9 cents lower. Up and down, is probably how grain and soybean bids will trade for a while. With uncertainty in South American weather and nothing definite in export business, trading could be very volatile the next few weeks. Wheat fell slightly lower in reaction to weakness in corn and bean pits and lack of fresh export news. Corn received some export interest from Japan as earlier reported but profit taking set in after recent highs undermined bids. Soybean bids dropped sharply on liquidation and rain in South America.

Export demand: Purchaser Commodity Tonnage Del date Japan Corn 107,696 Aug Totals: Corn 107,696 tonnes. Date Change Year ago Truck bids: 12/27/95 12/26/95 12/28/94 Wheat: Kansas City (HRW, ORD) 5.38 dn 1 4.24-4.27 Minneapolis (DNS, 14%) 5.49 1/4 dn 1 1/4 4.17 1/4 Portland (SW) 5.52-5.54 up 1-2 4.53-4.54 St. Louis (SRW) 4.99-5.16 up 3-4 4.12-4.16 Corn, US 2 Yellow: Kansas City 3.64-3.66 dn 3-2 2.34-2.35 Minneapolis 3.12 3/4 dn 3 1/4 2.08 1/4 Southern Iowa 3.42-3.46 dn 3-2 2.30-2.35 Omaha 3.34-3.36 dn 2-1 2.15-2.16 Soybeans, US 1 Yellow: Kansas City 7.22 dn 9 5.62-5.63

Minneapolis 6.84 dn 8 1/2 5.36 3/4 Southern Iowa 7.07-7.08 up 7-dn 8 5.65-5.70 Cent IL Processors 7.23 1/4-7.28 1/4 dn 8 1/4 5.64 3/4-5.73 3/4 Futures Close: Kansas City (Mar) Wheat 5.03 dn 1 1/4 4.06 3/4 Minneapolis (Mar) Wheat 4.94 1/4 dn 1 1/4 3.97 1/4 Chicago (Mar) Wheat 5.03 1/2 unch 4.07 Chicago (Mar) Corn 3.60 3/4 dn 2 1/4 2.33 1/4 Chicago (Jan) Soybeans 7.22 1/4 dn 8 1/4 5.61 3/4 (Mar) Soybeans 7.34 dn 8 1/2 Export Bids: Barge or rail, Port of New Orleans or North Texas Gulf. US 1 HRW Wheat, Ord. Protein: 5.69-5.71 dn 1 1/4 4.61 3/4 US 2 SRW Wheat: 5.53 1/2-5.56 1/2 dn 2-1 4.45-4.47 US 2 Yellow Corn: 3.87 3/4-3.89 3/4 dn 1 1/4-1/4 2.65-2.66 US 2 Yellow Sorghum: Rail 7.10 dn 4 4.65 Barge 7.14-7.16 dn 4-5 4.83 US 1 Yellow Soybeans: 7.64 1/4-7.65 1/4 dn 9 1/4-8 1/4 6.04 3/4-6.06

HOGS: MARKET STEADY. 210-250 LBS. 44.00-46.00; 255-300 LBS. 38.00-44.00; SOWS - HEAVY 31.00-33.00; SOWS - LIGHT 18.00-25.00; BOARS ALL WEIGHTS 21.00-25.00.

Lebanon Valley Livestock

Fredericksburg, PA
Tuesday, December 26, 1995

Report supplied by Auction
STEERS, CHOICE 1175-1335 LBS. 65.00-68.50 SELECT 1140-1270 LBS. 63.00-64.25; HOLSTEIN CHOICE 1080-1455 LBS. 54.00-57.25; SELECTS: 1175-1365 LBS. 52.00-54.00. HEIFERS: CHOICE 1075-1250 LBS. 64.50-66.75.

COWS: BREAKING UTILITY AND COMMERCIAL 35.50-39.50; CUTTER AND BONING UTILITY 32.00-35.25; CANNER AND LOW CUTTER 29.00-32.00; SHELLS 28.50 DOWN.

BULLS: YG#1 1845-2090 LBS. 44.75-47.50. YG#2 1245-1485 LBS. 32.50-41.75.

CALVES: CHOICE 135-150 LBS. 75.00-80.00; STANDARD AND GOOD 85-95 LBS. 28.00-35.00; UTILITIES: 70-85 LBS. 20.00-25.00.

FARM CALVES #1 HOLSTEIN BULL CALVES 100-120 LBS. 85.00-107.00; #2 HOLSTEIN BULL CALVES 95-115 LBS. 70.00-85.00; #1 HOLSTEIN HEIFER CALVES 90-120 LBS. 120.00-150.00; #2 HOLSTEIN HEIFER CALVES 85-105 LBS. 80.00-100.00.

BBBFX CALVES: 80-95 LBS. 50.00-65.00.

HOGS: US#1-2 260-270 LBS. 49.00-50.25; US#1-3 244-281 LBS. 43.50-45.25. US#2-3 240-295 LBS. 41.00-42.50.

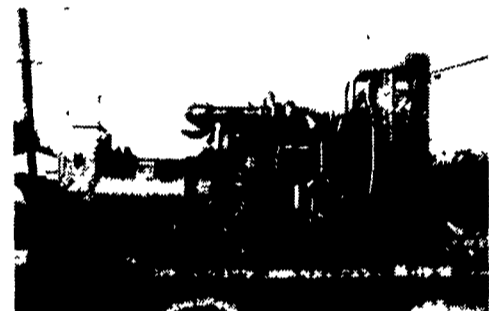
SOWS: US#1&3 520-575 LBS. 32.00-36.00; MEDIUMS 360-430 LBS. 25.00-29.00. US#2-3S 315-480 LBS. 30.00-33.75.

BOARS: 485-655 LBS. 23.50-25.00.

North Jersey Livestock

Hackettstown, NJ
Report Supplied by Auction
Tuesday, December 26, 1995

CALVES 23-130.
COWS 15% -45.
EASY COWS 10-28%.
FEEDERS 300-600 LBS. 25-73.
HEIFERS 23% -58%.
BULLS 33% -54.
STEERS 34-63.
HOGS 25-41.
ROASTING PIGS EACH 5.00-36.00.
SHEEP: 40-84.
LAMBS EACH 29.00-107.00.
LAMBS PER LB. 57-135.
GOATS EACH 82.00-200.00.
KIDS EACH 10.00-89.00.
HIDES EACH 27.00
TOTAL: 1195 HEAD.



GENERATORS

Sales ★ Service ★ Rentals
★ Complete Generator Systems
★ PTO ★ Portables ★ 2-1600 KW
"We Service It If You Have It
And Sell It If You Need It"

34 W. Mohler Church Rd.
Ephrata, PA 17522

Tel: 717-738-0300
Fax: 717-738-4329

GOOD'S LIVESTOCK, INC.



Market Hogs ■ Sows
Boars ■ Cull Pigs

HOLIDAY RECEIVING HOURS:

We Will Be Closed January 1st
Receiving Jan. 5 - 6:30 to 10 AM



Rt. 897 - 1 mile North of Fivepointville
(717) 445-5776 • FAX (717) 445-6963

BINKLEY-HURST BROS. INC.
133 Rothsville Station Rd. • Litz, PA 17543
717-626-4705

Machinery Sales
M-F 7 to 5 Sat. 7 to 11:30
PARTS DEPT. HOURS:
Monday-Friday 7 AM to 5 PM
Saturday 7 AM to Noon
After Hours Emergencies
Call (717) 626-0885
(717) 626-5159
Sun. Closed - Lord's Day

WE SHIP PARTS DAILY

• FEDERAL EXPRESS • TRUCK FREIGHT
• AIR FREIGHT • B&H DELIVERY SERVICE

Case IH **DeGelman** **RAY** **S**

Case IH
David Brown
Eager Beaver
TRAILERS
HUSKY
"BETTER-BILT"
SUNFLOWER
MONOSEM
KINZE CORN PLANTERS & GRAIN CARTS
KELDERMAN AIR RIDE
WOODS MOWERS & BLADES
ATHENA Disk Harrows, Couler, Chasels, Chisel Plows

Scott
Busy As A Bee?
No Matter Where You Are - You're Never Too Far!
Your Parts Are Just A Phone Call Away!

Purchase Your Next Seasons Planter Parts Needs At Our Preseason Prices!

This Is Our Fax No. 717-626-0996
If You Have A Fax No., Let Us Know, We Can Communicate With You By Fax

REAL VALUE

CONCRETE WATERERS
By **BOHMANN**
quality products

Many Models In Stock

ENERGY-SAVING DESIGN

- 9,000 p.s.i. reinforced hull: internal steel frame, wire mesh, glass fiber
- Epoxy coated sloped concrete trough, resist bacterial growth
- Choice of operation: auto. or manual constant flow
- Add on, thermostat electrical element control (if required)
- Multiple sizes to choose from, capacities from 25-110 gallon

SUPERIOR DESIGN & QUALITY CONSTRUCTION
DEPENDABILITY YEAR AFTER YEAR

1-800-216-6029
EMPIRE AGRI-SYSTEMS, INC.
315-253-3256 • Grant Ave., Auburn, N.Y. • Fax 315-252-2108
Dealer Inquiries Welcome!