

Quality angus, spring cows, heifers, feeders, herd bull, complete performance records, carcass proven sires, fair prices. Tim Livingston, York Co. 717-292-1547.

Mechanic special, 4 row international corn planter \$120 OBO. Pickup truck camper top \$50 OBO. Lanc. Co. 717-354-0147.

Case IH 5120 creeper, rops, canopy 500hrs, Case IH 895 creeper rops canopy row crop estate sale. Onon Co. 635-3454

Sell or trade 3 #30 cockshutt tractors, and 2 Farnall cubs, call Eves Pike Co 717-588-8350.

Snow blade for JD 200 series tractor, also older Simplicity snow blade Delaware Co 610-459-1818.

955 H cat track loader, 1700 hours on new motor, runs and operates, good farm machine \$4800 or trade. Chester Co. 610-273-2423.

Ear corn app 5 tons \$400. Oliver 3 pt 3 bottom plows \$300. JD LA motor clutch \$400. Eves Luzerne Co 717-388-2341.

79 Dodge 4x4 PU club cab 360 4spd power angle snowplow, good tires, heavy duty hitch \$3500. Lanc. Co. 717-665-6647

Western saddle \$160. Pony western saddle \$75. Peahens \$35 each. Peacock \$40. 1949 Ford 4 door sedan \$2500. Lebanon Co 717-949-3259.

Brady corn stalk chopper w/ac engine, 323 picker both good working condition, John Lapp, 771 Brown Rd, New Park PA 17352. York Co.

1982 Nissan Maxima diesel, 4 door auto, runs good, asking \$1850. Columbia Co. 717-784-0911

1978 Scorpion TKX440 manual start, 1972 Massey Ferguson electric start, snowmobiles, 1986 Karavan trailer, 8x10 excellent condition, garage kept Cumberland Co. 717-776-4310.

Flow Ford 142, 4 bottom auto reset, semi mounted \$825. Lanc Co. 717-665-3994.

New Year Day sale, selling 9 ft motorized ag bagger, 1890 4x4 chopper, 6 tractors, trucks, see Richard Hoppes Sale Ad. Berks Co. 610-562-4945.

Your design, sculpting, or carving reproduced, any quantity great for Church, farm, fund raisers, gift shops, etc. Franklin Co 717-369-4941.

HF 65 gas tractor, very good condition \$3600. Ford 6' rotary mower, extra heavy cost \$2400. Sell \$1200. Carroll Co. 301-262-9037.

Farnall M Farnall H and loader IH #2 hay conditioner MF 65 gas smoker special 30' good condition. Berks Co. 610-582-4156.

1994 LSLI Beavertail flat dock trail with ramps, like new used three times for \$4000 OBO. Washington Co. 301-824-4501.

275 oil tank \$45. 21" elect snow blower \$125. Old louvered shutters \$5. Antique street lights, \$295. Lanc. Co. 717-394-0966.

2 Firestone stud snow tires, LR78-15, excellent condition, 1980 Chevy Malibu good, new tires, 81000 miles, make offer Adams Co. 717-528-4362

Pony work harness \$275. Large pony harness \$125 Heavy duty pony cart, like new, easy entrance \$400 Lebanon Co. 717-272-6819.

Sickle bar mower IH universal rear mount No 25V M adapted, 7ft bar, hyd cylinder VG r tire \$200. Montgomery Co. 215-699-5412.

Inspection rolls washer dryer waxer dryer 16" Sewtech works good, need bigger equip, call for information, excellent condition Berks Co. 610-929-0888

Miniature female donkey \$1000 Also small standard male donkey \$350 Both very tame and friendly Lanc Co. 717-355-2074

Porsche diesel, 4 cyl tractor \$650. Early WC Allis Chalmers, \$250 Call morn or eve Lehigh Co 610-767-0436

Burlap bags for baling trees, landscaping Stainless steel bucket milkers with dumping station, call nights after 9 p.m. Schuylkill Co. 717-467-3540.

Pequea hay tedder, field sprayer, with booms and engine, both in good condition 4740 Delta Rd, Delta PA 17314 York Co

1985 Buick Park Avenue, needs tran and wrecked back, motor VG will take offers, has all goodies, works Schuylkill Co 212-875-2519.

60 brown pullets, 22 weeks old, sell any amount, \$3 50 each. Standardbred trotter, carriage horse, traffic safe \$1050. Lanc Co. 717-354-5696

1990 red Chevy 2500, extended cab, 4x4, 350, auto, no OD, newly installed towing package, 30000mi, nice \$13000 OBO. Berks Co. 610-693-8218.

57 Chev with post. JD 1936 JD B 81 Chev luv diesel, Kohler 4 cyl engine. Montgomery Co. 215-233-4088.

Log splitter trailer type 7hp engine, 20 ton power/Woods 3 point backhoe Model 650 new condition, will fit most 3 pt hitch. Chester Co. 610-273-3219.

Generator 30KW, excellent condition, automatic panel, propane or gasoline fuel, low hours, ready for your emergency. Bucks Co 215-257-3307

New 3/4" drive 21 piece socket set with box \$75 Ajax 2hp elect motor, good condition, \$75 Juniata Co 717-463-2394

Eleven twelve foot church pews, \$25 each Good 310 Case crawler loader, very good condition \$3500 Northumberland Co 717-758-7137

Mennonite buggy, swab wagon, Grueber wagon, Haughton fine harness buggy restored, all excellent condition Harford Co 410-877-1713

1978 Ford Mustang G1A AT PS PB AC turquoise 58000 original miles, ex condition, very clean classic car Lanc Co 717-464-2028

5hp engines, guaranteed to work \$125 Bushel crates \$5 Pine benches 4-8' drop leaf tables. Jacob King 521 Valley Rd, Quarryville PA 17566 Lanc Co

Round oak kitchen cook stove in good, working condition with warming shelf, white enamel finish \$125 OBO. Lanc Co 717-361-0159.

1980 Chevy C30 1 ton stakebed, 350, 4 spd, 50 k on engine, no rust, inspected, runs great \$2500 OBO. Lebanon Co. 717-838-6270

Int cub snow plow \$150. 2 foot backhoe bucket \$25 Parting out 1971 Dodge 1/2 ton pickup 5 gallon air grease gun \$200. Schuylkill Co. 717-386-3143.

Pair of 24" forklift forks \$125. Roy Chandler book Shatto's Way \$45. Perry Co. 717-834-3882.

Power King 1724, 5' mower, 3pt, 5' blade, runs good, e take tractor, special pre season \$3600. Complete after 5 p.m. MF weekends. Montgomery Co. 610-845-3825.

C.B. HOOPER & SON, INC.
Intercourse, PA
(717) 768-8231

HOOPER

HOOPER EQUIPMENT, INC.
Middletown, DE
(302) 378-9555

TWO LOCATIONS

The Saving Place

**HAPPY NEW YEAR FROM ALL OF US
IN THE PARTS DEPARTMENT**

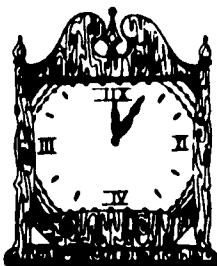
C.B. HOOPER & SON INC.:

- PARTS MANAGER - RICHARD BOMBERGER
- ASS'T. MANAGER - KEVIN THRUSH
- ROAD SALESMAN - KENNETH BEILER
- ROAD SALESMAN - CARL HERSHEY
- ROAD SALESMAN - LARRY MILLER
- ROAD SALESMAN - GARY HAUSEMAN
- PARTSMAN - ROY WEAVER
- PARTSMAN - JOHN STONER
- PARTSMAN - AL YODER
- PARTSMAN - ROBERT HERR
- PARTSMAN - RAY SHISSLER
- PARTSMAN - DICK SKETHWAY
- PARTSMAN - CALVIN EBY
- PARTSMAN - ROBERT GROFF
- PARTSMAN - EARL WALKER
- PARTSMAN - ROBERT BOOK
- PARTSMAN - BRAD HERSHEY
- STOCKMEN - LLOYD GROFF, SANFORD HERSHEY

HOOPER EQUIPMENT INC.:

- PARTS MANAGER - MIKE NULL
- ROAD SALESMAN - MARK LOCKWOOD
- ROAD SALESMAN - SAM NULL
- PARTSMAN - SALLY AIKEN
- PARTSMAN - STEVE HANIFEE
- PARTSMAN - LARRY MOORE
- PARTSMAN - DAVE NEUGEBAUER
- PARTSMAN - TONY WYRE
- PARTSMAN - LEON WALLBERT
- PARTSMAN - SHAWN HODSON
- STOCKMAN - LEE HURLOCK
- STOCKMAN - CHRIS WILLIAMS

*By Service
We Grow*



*Thank You
For Your
Patronage In
1995.
We Look
Forward To
Serving Your
Parts Needs
In 1996!*

WE SHIP PARTS DAILY Via -FED EX-UPS-PPSH-BUS-AIR FREIGHT, ETC.

HOURS

Mon.-Fri. 7 AM-5 PM; Sat. 7 AM-Noon

CALL US...

It Could Be We Have It

CASE III

Authorized
UPS Station

YOU STAY PUT
Pick Up Your
Phone And
Place Your
Parts
Order
With
Us

JAY ZEIGLER Standing Seam Metal Contractor

Since 1963 "Simply The Very Best Roof Available"

FREE Estimates

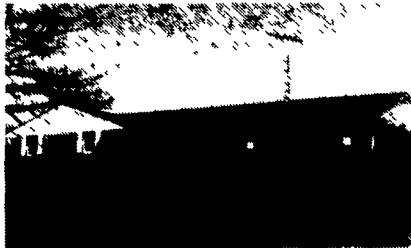
Call For Information



Use on Barns Or Garages



Light Commercial



Reroof w/Metal

ADVANTAGES:

- Roof can last for 100 years - cost efficient
- Can be installed over existing roof (Asphalt, roll roofing, wood shingles)
- Is environmentally safe
- Beauty - colorful (galvanized, 40 lb. terne, terne-coated stainless, and painted steel in over 20 different colors.)
- Can be installed on flat roof with as little as 1/4" pitch per foot.
- Good for homes, farm buildings, garages, commercial buildings.
- Sheet in continuous length installed with concealed fasteners with double lock seam for water tight application.

PO Box 231 Rehersburg, PA 19550

(717) 933-4666 (717) 933-5305 FAX/PHONE

New Construction

*Black Rock
Repair*

Manufacturer of Farm Sprayers

Pressure Washers & Hydraulic Hoses
Metal Fabricating
Brake & Shear Work
General Welding & Repair

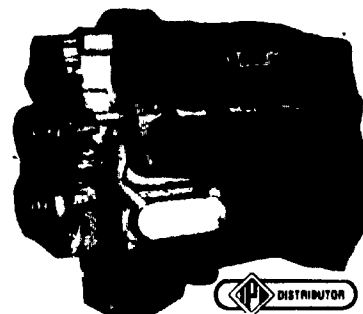
858 Pumping Station Road
Kirkwood, PA 17536

Answering Service
717-529 6553

RECON ENGINES

DIESEL PERFORMANCE SPECIALISTS
(717) 354-4801

Specializing In
Used Rebuilt And Exchange
3208 Caterpillar Engines



SALES
• SERVICE
• PARTS

DIESEL POWER SUPPLY

DIESEL ENGINES - POWER UNITS
415 PETERS RD. GORDONVILLE, PA 17529

Misc. New-Used And Trade-In
Diesel Engines



SPECIALIZING IN
B&C SERIES