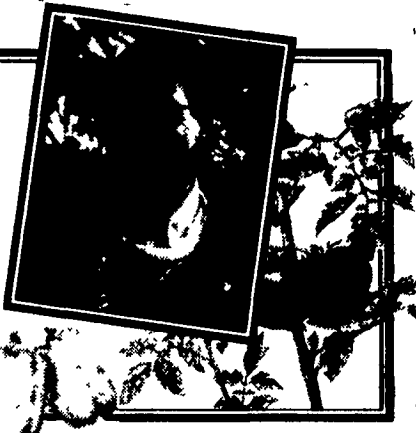


**All Gardens  
Great & Small**  
by  
York Co.  
Horticultural Agent  
**Tom Becker**



place for insects and spiders to hibernate through the winter. Always wear gloves when reaching into a wood pile. Spiders enjoy a wood pile for overwintering. Other insects living in wood piles include: Roundheaded Borers, Flathead Borers, Bark Beetles, Ambrosia Beetles, Powderpost Beetles, Carpenter Ants and Termites, Hornet Wasps, Carpenter Bees, Darkling Beetles, and Pennsylvania Wood Roaches.

Store firewood outdoors in an open area, as far away from the house as practical, to keep away insects, dirt and debris. stack firewood off the ground to eliminate wood rot and pest problems.

Never stack wood against the house. Cover the wood pile with dark polyurethane plastic or sheet metal roofing to keep the wood dry. When severe cold weather arrives, pieces of firewood can be moved nearer to the house for easy access. Firewood should be stored on a rack, patio or deck instead of on the ground.

Bring only enough firewood into the house to be burned immediately. Firewood stored inside the home over an hour or so may warm up enough for the insects to emerge from within or under the bark and start their spring activities early. Do not store firewood in a heated garage or basement for the same reason.

For more information on attracting wildlife, contact your Cooperation Extension office for Forest Stewardship #5, Wildlife.



you may maintain trees that have the potential to become cavity trees. Here's an easy way to improve the cover on your property.

Brush piles may be constructed using one of three types of bases. The first type consists of four large logs placed one foot apart and parallel to each other; with four more logs of the same size stacked perpendicular to the first logs. The second type of base is made by placing large stones in three piles that form a triangle. The third type of base is constructed of logs and stones by placing four large logs about one foot apart and parallel to each other, then placing large, flat rocks across the tops of the logs. After you have built the base of the brush pile, add brush to the top starting with the larger limbs first, then adding smaller pieces until the pile is about six feet high and six feet wide.

As the weather gets colder, a cheery holiday fire welcomes family and friends indoor. A few extra friends and foe may arrive when bringing firewood into the house.

A pile of firewood is an ideal

# H A P P E N I N G S

**RUTGERS (Hunterdon County) —** The New Jersey 4-H Science & Technology Committee has developed a series of self-contained "4-H Science Discovery Kits," according to Terese Buchanan, Hunterdon County 4-H Agent. These will help youth program staff and volunteers, as well as classroom and after-school teachers, to provide science lessons to youth using a fun, learn-by-doing approach. Each kit contains a lesson plan and nearly all of the teaching materials needed to teach the lesson in a hands-on way. The kits can be borrowed, for \$3 and a \$20 deposit refundable when the kit is returned. The kits are aimed at teaching youth in group settings such as 4-H clubs and other meetings, and school classrooms. These lessons were developed by faculty and staff of Rutgers Cooperative Extension. Topics include the following:

- Geology Where you live (Rocks & Minerals - best for grades 3-7)
  - Don't Trash the Planet! (Recycling/Sold Waste - best for grades 3-6)
  - Tree-Mendous Fun (Trees - best for grades 2-3)
  - As Big As A Whale! (Whales - best for grades 4-8)
- A youth leader or teacher can sign out one kit at a time, for a period of one week. A simple, one-

page evaluation/report form needs to be completed when the kit is returned.

**Conodoguinet 4-H Sheep**  
The Conodoguinet 4-H Sheep Club will be re-organizing on January 17, 1996, 7:30 P.M. at the Cumberland County Extension Office.

This club is for 4-H members primarily interested in breeding sheep and market lamb projects.

4-H is the youth program of Penn State Cooperative Extension. This and all 4-H programs are available to all youth between the ages 8-19 regardless of race, color, national origin, sex or handicap.

For more information on joining 4-H, contact Laura Watts at the Cumberland County Extension Office, 1100 Claremont Road, Carlisle, PA 17013 - Phone 240-6500, 697-0371 Ext. 6500, or 532-7286 Ext. 6500.



## UNCLAIMED FREIGHT CO. AND LIQUIDATION SALES INC. OPEN SUNDAY CHRISTMAS EVE 10am to 4pm

**7 pc. OAK DINING ROOM**

Ball and Claw Foot Pedestal. Drop Leaf. Sunburst Table with 6 Side Chairs. Reg. Ret. \$1989.95  
**Our Cash Price \$539.95**  
with 4 Side Chairs \$459.95

**SWIVEL ROCKER WITH OTTOMAN**

Available in light blue, green & mauve  
Reg. Ret. \$449.95  
**OUR CASH PRICE \$89.04**

1ST QUALITY! This order was cancelled by a big chain.  
**AWESOME BUY!**

**Pine Finish ENTERTAINMENT CENTER**

32"x17"x81" H  
Reg. Ret. \$399.95  
**OUR SPECIAL PRICE \$29.95**  
**CLOSOUT PRICE \$99.04**

**(CANTED) FRONT CURIO**

**Cherry finish**

- 5 glass shelves
- two doors
- lighted interior
- mirrored back

Volume Buy II  
Reg. Ret. \$559.95  
**OUR SPECIAL PRICE \$159.88**

**GLIDER ROCKER**

Available in Blue or Beige

Reg. Ret. \$549.95  
**Our Cash Price \$129.88**

**Clip This Valuable Coupon!**

**RECLINER**

Reg. Ret. \$389.95  
**OUR CASH PRICE \$129.95**  
WITH COUPON **\$89.88**

**CLAIM YOUR BARGAIN**

With Bassett Or Serta bedding purchase only.  
**We Absolutely Have The Best Prices On Bedding**

**BASSETT MATTRESS & BOX SPRING**

This is top of the line bedding and one of the best deals that we ever made! These are all overruns, cancellations and close-out fabrics. This is one heck of a price on bedding, complete with a warranty of one full year replacement at no charge.

	Reg. Ret.	OUR CASH PRICE	SPECIAL
Single	\$589.95	\$259.95	\$119.95
Double	\$729.95	\$309.95	\$149.95
Queen	\$859.95	\$399.95	\$199.95
King	\$1099.95	\$519.95	\$259.95

**BERTA MATTRESS & BOX SPRING**

We Have The New 1995 Covers

SINGLE	Reg. Ret. \$609.95	OUR CASH PRICE \$149.95
DOUBLE	Reg. Ret. \$749.95	OUR CASH PRICE \$189.95
QUEEN	Reg. Ret. \$889.95	OUR CASH PRICE \$249.95
KING	Reg. Ret. \$1129.95	OUR CASH PRICE \$299.95

Prices include both pieces!

**HALL TREE**

Mirrored Back  
Reg. Ret. \$299.95  
**OUR CASH PRICE \$139.95**

**5 Pc. DINETTE**

Drop Leaf Table

4 Upholstered Chairs  
Solid Natural Wood with Oak Finish  
Reg. Ret. \$599.00  
**OUR CASH PRICE \$149.04**

**Clip This Valuable Coupon!**

**FULL SIZE RECLINER**

3 Positions!  
Reg. Ret. \$399.95  
**OUR CASH PRICE \$139.95**

**Clip This Valuable Coupon!**

**ROCKER RECLINER**

Catnapper Full Size  
Reg. Ret. \$629.95  
**OUR CASH PRICE \$299.95**  
WITH COUPON **\$179.00**

**Clip This Valuable Coupon!**

**SECTIONAL SLEEPER**

Reg. Ret. \$2389.95  
Dealer Refusal  
Features a loveseat with side by side recliners and center console plus sofa with hide-a-bed  
**OUR CASH PRICE \$1049.95**  
WITH COUPON **\$89.88**

**Clip This Valuable Coupon!**

**TRADITIONAL TABLE SET**

Queen Anne legs and brass hardware  
Oak or cherry Your Choice  
Reg. Ret. \$339.90  
**OUR CASH PRICE \$169.95**  
WITH COUPON **\$109.88**

**SOFA TABLE**

Mirror Top With Brass Trim  
Reg. Ret. \$329.95  
New Only **\$69.95**  
White Supplies Last

**ARC LAMP**

Black or Brass Finish  
Adjustable Lamp heads.  
Reg. Ret. \$399.95  
**OUR CASH PRICE \$99.95**

**Clip This Valuable Coupon!**

**4 DRAWER CHEST**

Pine Finish and Brass Hardware  
Reg. Ret. \$149.95  
**OUR CASH PRICE \$69.95**  
WITH COUPON **\$39.04**

**Clip This Valuable Coupon!**

**3 PIECE TABLE SET**

Love Seat, 2 Chairs and Table  
Reg. Ret. \$419.95  
**Christmas Special \$119.04**

**TABLE LAMPS**

Only 500 to sell at **\$19.00** each!

Styles vary from shown; wood, metal and/or glass, 28" to 32" height.  
Reg. retail from \$79.00-\$109.00

**5 PC. TRADITIONAL BEDROOM**

Oak finish. Chest, dresser, mirror headboard & nightstand.  
Reg. Ret. \$599.95  
**OUR CASH PRICE \$199.88**

**DELCO MATTRESS AND FOUNDATION**

King	Reg. Ret. \$649.95	Sale Price \$189.88
Queen	Reg. Ret. \$599.95	Sale Price \$129.88
Double	Reg. Ret. \$319.95	Sale Price \$99.88

**ilaeasta anuncio para buenas gangas!**

We are a four store chain not affiliated with any other stores.  
Stores in LANCASTER YORK CARLISLE PA SMYRNA DE  
LANCASTER STORE HOURS Mon - Fri 9-9 Sat 9-6 Sun Noon-5

FINANCING AVAILABLE  
No Returns  
No Exchanges  
Cash & Carry

3019 Hempland Road • Lancaster • 717-397-6241