

New Holland Feeder Pigs

New Holland, PA
Wed., December 27, 1995
Report Supplied by USDA
TODAY: 802 HEAD
LAST WEDNESDAY: 668 HEAD
LAST YEAR: 837 HEAD
TREND: TREND NOT COMPARABLE. SUPPLY SOLD MAINLY TO SLAUGHTER. ALL PIGS WEIGHED ON ARRIVAL AND SOLD BY THE HUNDRED WEIGHT.
FEEDERS: US#1-2: 6 HEAD, 49 LBS. 82.00, WEIGHTED AVERAGE 49.00, WEIGHTED PRICE 82.00; 56 HEAD 57-75 LBS. 75.00-76.00, WEIGHTED AVERAGE 61.71, WEIGHTED PRICE 75.87.
SLAUGHTER: US#1-2: 165 HEAD 20-29 LBS 215.00-270.00, WEIGHTED AVERAGE 24.85, WEIGHTED PRICE 248.38; 70 HEAD 32-39 LBS 112.00-170.00, WEIGHTED AVERAGE 35.17, WEIGHTED PRICE 124.82; 113 HEAD 40-48 LBS 84.00-114.00, WEIGHTED AVERAGE 42.48, WEIGHTED PRICE 96.73; 158 HEAD 50-55 LBS 74.00-94.00, WEIGHTED AVERAGE 53.36, WEIGHTED PRICE 86.20; 34 HEAD 60-64 LBS. 68.00-72.00, WEIGHTED AVERAGE, 61.29, WEIGHTED PRICE 70.65.
ALL PIGS CONSIGNED TO WEDNESDAY FEEDER PIG SALE MUST ORIGINATE FROM A QUALIFIED NEGATIVE OR MONITORED HERD.

State Graded Feeder Pig Sale

Carlisle Livestock Market, Inc.
Friday, December 22, 1995
RESULTS ON 1,026 PIGS.
TREND: COMPARED TO FRIDAY, DEC. 8, 1995, PIGS WERE VERY ACTIVE! ALL PIGS ARE FROM QUALIFIED OR MONITORED HERDS; THEY WERE WEIGHED ON ARRIVAL AND SOLD BY THE HUNDRED WEIGHT.
US #1&2: 784 HEAD. 16 HEAD 36-39 LBS. 125.00-134.00; 276 HEAD 40-49 LBS. 91.00-105.00; 248 HEAD 50-59 LBS. 84.00-95.00; 219 HEAD 61-69 LBS. 75.00-80.00; 25 HEAD 77-88 LBS. 78.00-79.00.
US #2: 212 HEAD. 2 HEAD 25 LBS. 157.50; 7 HEAD 32-39 LBS. 119.00; 61 HEAD 43-49 LBS. 91.00-97.00; 60 HEAD 52-59 LBS. 86.00-93.00; 58 HEAD 65-69 LBS. 73.00-76.00; 24 HEAD 82 LBS. 72.00.
US #2&3: 9 HEAD. 2 HEAD 32 LBS. 120.00; 5 HEAD 50-65 LBS. 69.00-74.00; 2 HEAD 122.5 LBS. 42.00.
UTILITIES: 7 HEAD 45-59 LBS. 56.00-67.50.
AS IS: 14 HEAD 35-100 LBS. 45.00-122.50.
NEXT STATE GRADED FEEDER PIG SALE WILL BE FRIDAY, JAN. 12, 1996. RECEIVING 7-11 A.M. SALE AT 1:30 PM SHARP!

Diffenbach Auction Center

New Holland, Pa.
Monday, December 18, 1995
Report Supplied by Auction
TOTAL LOADS: 160.
ALFALFA: 65.00-157.00.
MIXED HAY: 45.00-155.00.
TIMOTHY: 100.00-150.00.
ORCHARD GRASS: 62.00-115.00.
STRAW: 45.00-87.00.
EAR CORN: 115.00-127.00.
OATS: 2.45-2.75.
FIREWOOD: 57.00-75.00 LOAD.
THERE WAS NO SALE ON MONDAY, DEC. 25.

Green Dragon Hay

Ephrata, Pa.
Friday, Dec. 22, 1995
Report Supplied by Auction
106 TOTAL LOADS.
MIXED HAY: 34 LOADS, 85.00-180.00.
ALFALFA: 17 LOADS, 75.00-170.00.
TIMOTHY: 16 LOADS, 83.00-145.00.
STRAW: 21 LOADS, 65.00-99.00.
EAR CORN: 6 LOADS, 117.00-131.00.
ORCHARD GRASS: 4 LOAD, 100.00-132.00.
CLOVER: 2 LOAD, 77.00-100.00.
OATS: 2 LOADS, 62.00-64.00.
WOOD: 2 LOADS, 57.00-65.00.

Kirkwood Hay Auction

Kirkwood, Pa.
Tuesday, Dec. 26, 1995
Report Supplied by Auction
49 LOADS OF HAY.
MIXED: 1ST CUTTING 39.00-105.0; 2ND CUTTING 86.00-138.00.
TIMOTHY: 83.00-165.00.
ALFALFA: 1ST CUTTING 87.00-97; 2ND CUTTING 99.00-128.00; 3RD CUTTING 111.00-128.00.
CLOVER: 97.00.
GRASS: 59.00-100.00.
WHEAT STRAW: 45.00-69.00.
BARLEY STRAW: 74.00.
RYE STRAW: 68.00.
OAT STRAW: 60.00.
WOOD: 64.00 LOAD.
SALE TIME 11 A.M.

Vintage Hay

Paradise, PA
Thurs., December 28, 1995
Report Supplied by Auction
ALFALFA: 80.00-131.00
TIMOTHY HAY: 94.00-137.00
MIXED HAY: 55.00-118.00
CLOVER: 84.00
STRAW: 64.00-76.00.
TOTAL: 23 LOADS
SALE TIME 1 P.M.

Some markets not available due to the holiday

North Jersey Market

Hackettstown, N.J.
Report Supplied by Auction
Tuesday, December 26, 1995
Hay—Straw & Grain Report
ALFALFA: 5 LOTS, 3.00 AND 2.10 BALE.
MIXED: 15 LOTS, 3.10 AND 2.00 BALE.
TIMOTHY: 6 LOTS, 2.70 AND 2.20 BALE.
GRASS: 3 LOTS, 2.50 AND 1.90 BALE.
STRAW-WHEAT: 1 LOT AT 1.50 BALE.
STRAW-BARLEY: 3 LOTS, 2.00 BALE.
SHELLED CORN/BAG: 1 LOT, 5.25 AND 4.75 BAG.
OATS/BAG: 1 LOT AT 7.00 BAG.
FIREWOOD/LOAD: 2 LOTS, 85.00 AND 50.00 LOAD
37 LOTS TOTAL.

Regional Hay

December 26, 1995
Eastern, Pa.
HAY & STRAW MARKET FOR EASTERN PA - (ALL HAY NO. 2 AND BETTER. PRICES PAID BY DEALERS AT THE FARM & PER TON.) HAY STEADY TO STRONG, STRAW STEADY.
ALFALFA 80.00-110.00; MIXED HAY 70.00-100.00 FEW REPORTED 120.00; TIMOTHY 70.00-110.00 FEW REPORTED 120.00; STRAW 50.00-80.00 FEW REPORTED 90.00; MULCH 25.00-45.00 FEW REPORTED 55.00.
SUMMARY OF LANCASTER CO. HAY AUCTIONS FOR WEEK ENDING 12/22/95. PRICES PER TON: LOADS: 199 HAY, 48 STRAW & 13 EAR CORN. ALFALFA 90.00-137.00; MIXED HAY 80.00-155.00; TIMOTHY 100.00-150.00; STRAW 52.00-87.00; EAR CORN 115.00-127.00.
SUMMARY OF CENTRAL PA. HAY AUCTIONS FOR WEEK ENDING 12/22/95. PRICES PER TON: LOADS: 128 HAY, 20 STRAW & 14 EAR CORN. ALFALFA 72.00-132.50; MIXED HAY 60.00-135.00; TIMOTHY 65.00-90.00; STRAW 55.00-80.00; EAR CORN 78.00-122.00.

New Holland Hogs

Tuesday, December 26, 1995
TODAY 791
LAST MONDAY 2133
LAST YEAR 1147
COMPARED TO LAST WEEK, BARROWS AND GILTS STEADY.
US#1-2 215-260 LBS. 45.00-46.50;
US#1 220-255 LBS. 46.50-47.50.
US#1-3 210-265 LBS. 44.00-45.00, 265-285 LBS. 43.00-44.00.

Indiana Hogs

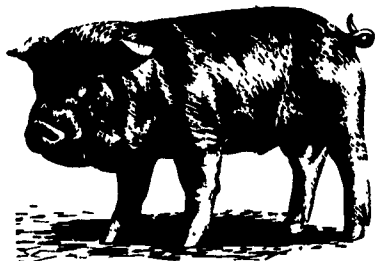
SPRINGFIELD, IL
DECEMBER 27, 1995
Indiana-Ohio Direct Receipts: Tuesday's actuals 42,200 Week to date 84,200 Today's estimate 42,000 Same pd week ago 109,900 Wednesday week ago 37,100 Same pd year ago ** 92,100 Wednesday year ago **35,700
*Receipts have changed due to change in reporting base.
Barrows and Gilts: Steady to .50 lower. Demand moderate for a moderate to heavy run.
Country: Plants: JS 1-3 230-260 lbs. 43.50-45.00, 43.00 & 45.50 44.25-46.00 US 2-3 230-260 lbs. 38.00-43.00 210-230 lbs. 34.00-38.00
Sows: Mostly Steady. US 1-3 under 500 lbs. 27.00-30.00, few 26.00 over 500 lbs. 31.00-34.00, few 35.00
Boars: 24.00-27.00 Eastern Combelt Direct Hog Trade Hot Carcass Value Information
Trend: Steady to .75 lower.
Estimated receipts: 33,200 as of 11:00 am

New Holland Hogs

LANCASTER, PA
DECEMBER 27, 1995
TODAY 791
LAST MONDAY 2133
LAST YEAR 1147
TREND: Compared to last Week barrows and gilts steady. US 1-2 215-260 lbs 45.00-46.50 US 1 220-255 lbs 46.50-47.50 US 1-3 210-265 lbs 44.00-45.00 265-285 lbs 43.00-44.00

New Holland Livestock

NEW HOLLAND, PA
DECEMBER 26, 1995
HOGS 1185 --- Compared with last week's sale...Barrows and gilts steady. US No. 1 220/255 lbs. 46.50- 47.50 US No. 1-2 215/260 " 45.00- 46.50 US No. 1-3 210/265 " 44.00- 45.00 265/285 " 43.00-44.00



KIRKWOOD HAY AUCTION
Hay, Straw and Grain Auction EVERY TUESDAY 11:00
Located Rt. 472 5 miles south of Quarryville or 6 miles north of Oxford corner of Rt. 472 and Noble Road.
Lloyd H. Kreider, Auctioneer AU-000513L
No out of state checks

PENNFIELD GRAIN BANK
Pennfield Offers A Sound Program For The Dairy Farmer To Use His Grain "Same As Cash" To Reduce His Monthly Feed Bill And To Avoid Having To Take "Harvest Price" For His Grain
Prices Week Of 01/01/96
Corn \$4.01 Bu.
Soybeans \$7.30 Bu.
Barley \$3.20 Bu.
• No Storage Charges
• Prices Updated Weekly
• Grain Bank Balance Shown On Each Invoice
• No Hidden Charges
For every ton of qualifying dairy feed purchased you will receive one ton of grain back hauled at no charge
Call 1 800 732 0167
pennfield feeds

INDEX
Four Sections

| | |
|---------------------------------|----------------------------------|
| COLUMNS | HOME AND YOUTH |
| Now is the Time..... A10 | Homestead NotesB 2 |
| Young Farmer News..... A27 | Home On The RangeB 6 |
| It's Showtime..... A28 | Cook's Question CornerB 8 |
| Ida's Notebook.....B 4 | Kid's KornerB10 |
| On Being A Farm Wife.....B 5 | You Ask, You Answer.....B14 |
| All Gardens.....B 7 | 4-H HappeningsB 5, 7, 9,16 |
| Poultry Pointers.....C 2 | FFA HappeningsB17 |
| DEPARTMENTS | FEATURES |
| Editorial A10 | Family Heads For Show A17 |
| Farm Calendar..... A10 | Tractor Calendar A21 |
| Farm Forum A10 | Nutrient Hearings..... A23 |
| Futures A16 | Farm CoupleB 2 |
| Mailbox Markets.....B23 | Keiffer's CareerB12 |
| Public Auction Register.....B25 | Odor ControlB22 |
| Business NewsC 4 | Lima Bean ProductionC 6 |
| Classified AdsC 6, D 4 | |
| DAIRY | FARM SHOW INFORMATION |
| DHIA Focus..... A15 | Schedule.....B17 |
| Holstein Convention A29 | Exhibitors' List, Map.....B18 |
| Top Pa. Herds..... A30 | Meetings.....A..B20 |
| Md. DHIA.....B16 | DemonstrationsB21 |

Walter M. Dunlap and Sons offers all cattle feeders two marketing days. Give us a call for advice and marketing conditions.

MONDAYS OR WEDNESDAYS

Consign With Us - For The Marketing Edge

Next Feeder Cattle Sale
Wednesday, January 3 - 12 Noon

Walter M. Dunlap and Sons
Lancaster Stockyards
Tel. (717) 397-5136

An Old Line Commission Firm Keeping Abreast With The Times