

New Nutrition Adds Flexibility

DAVID BIGELOW
Training Coordinator
STATE COLLEGE (Centre Co.)—Flexible and user friendly are two adjectives best used to describe the new nutrition program. This unique program can handle thirteen feeds which includes 4 concentrates, 6 total mixed rations, 10 forages and twelve pastures. Along with being able to report 4 concentrate

pounds, a dairyman may report this information to the nearest hundreds. The Herd Summary I Report reflects the new changes and has an expanded format to better show the customization of the report. A dairyman has the luxury of naming his own feeds, unlike in the old forage program, where the feeds are numbered. Again, the dairyman may do this in the order

of his preference. The dairyman also needs to provide the correct dry matter, crude protein, net energy and the correct cost per cwt. and total pounds fed per cow daily. The program is able to handle up to 5 groups of cows, which means that any of the thirteen feeds may be group fed.

Currently the new nutrition is set-up in a way that the feed information will stay in the laptop computer between farm visits. This helps in a situation where a dairyman may quickly want to check the calculations from the previous month. Once reported, only changes, additions and deletions are required.

Dairyman are still able to utilize the old nutrition program. However, information cannot be entered in both the old and new programs. A decision must be made on what best suits the member.

Ask your PA DHIA Technician on your next testday to put you on the new nutrition program option at no extra cost!

Milk Producers May Apply For Refunds

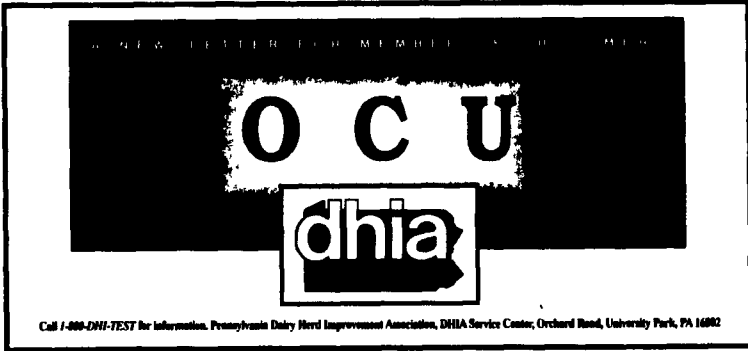
LANCASTER (Lancaster Co.)—Milk producers can receive a refund of the assessment placed by Commodity Credit Corporation against the price received for milk during 1995.

If a producer did not exceed their commercial milk marketings from the 1994 base period, he may qualify for a full refund. All other eligibility requirements must be met.

If a milk producer went out of the dairy business during 1995, production cannot be exceeded for the equivalent months and days in 1994. A full transfer of cows to family members can also qualify using these guidelines.

Applications will be approved when documentation for all producers requesting a refund has been submitted from all dairy units in which the producer has an interest and from all related persons with whom the producer has any dairy interests. Related persons include spouse, minor child, guardian, corporations, partnerships, joint ventures, and estates in which the person seeking the refund has a financial interest.

Failure to report these interests can result in repaying any refund plus severe civil penalties. Evident can include monthly payment receipts or statements from milk handlers.



Average Farm Feed Costs For Handy Reference

To help farmers across the state to have handy reference of commodity input costs in their feeding operations for DHIA record sheets or to develop livestock feed cost data, here's last week's average costs of various ingredients as compiled from regional reports across the state of Pennsylvania. Remember these are averages so you will need to adjust your figures

- up or down according to your location and the quality of your crop.
- Corn, No. 2y - 3.44 bu. 6.16 cwt.
- Wheat, No. 2 - 4.70 bu. 7.85 cwt.
- Barley, No. 3 - 2.56 bu. 5.48 cwt.
- Oats, No. 2 - 1.92 bu. 5.99 cwt.
- Soybeans, No. 1 - 6.87 bu. 11.47 cwt.
- Ear Corn 86.58 ton 4.33 cwt.
- Alfalfa Hay - 104.00 ton 5.20 cwt.
- Mixed Hay - 105.00 ton 5.25 cwt.
- Timothy Hay - 109.50 ton 5.48 cwt.



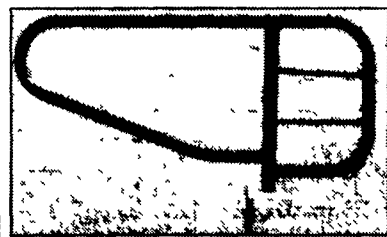
SUSPENDED COMFORT STALLS

For Modern Tie Barns

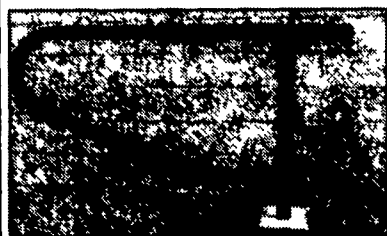
Coated with baked-on top grade TGIC polyester urethane powder after fabrication



SS-45G



SS-25



SS-45



- All welded construction to give many years of trouble free service
- Stall constructed with 1.9 O.D., .133 wall, high strength tube and 2" square tube post with 1/4" wall

CHECK THESE ADVANTAGES OF SUSPENDED COMFORT STALLS

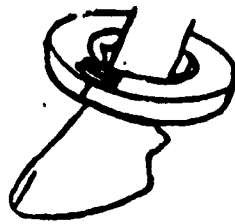
- More comfort for cows
- Easy cleaning, bedding & milking with no rear stall post
- No rust problem
- Adjustable tie rail
- Trough dividers
- Less trampled teat problems than with conventional stalls



LAPP'S BARN EQUIPMENT

5935 OLD PHILADELPHIA PIKE, GAP, PA 17527
PHONE: 717-442-8134
- Radio Dispatched Trucks -

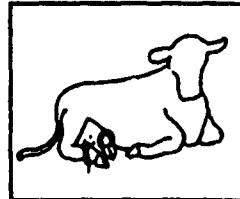
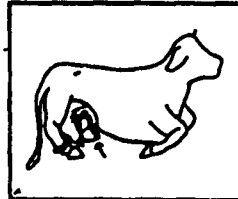
THE END OF TEAT INJURY



"NO SECRETS" The "TEAT SAVER"

pushes the udder & teat away from the dew claw. Apply two weeks prior to freshening.

This product can be purchased at your local Farm Stores or Feed Mills or by contacting your local animal health centers.



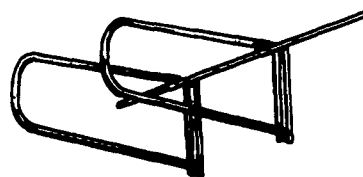
DEALER INQUIRIES WELCOME!

The "TEATSAVER" supplied by J.B. Supply Ltd. Chetek Wisconsin 54728 For Information Phone (715) 924-2136

SINCE 1919

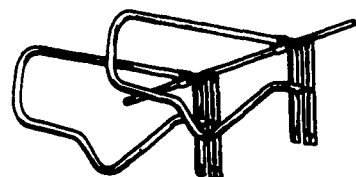
BERG

FREE STALLS SUPERIOR QUALITY - COMPETITIVE PRICE



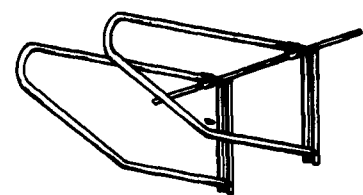
NU-U

Ideal replacement for rusted off partitions. Reduced installation cost and easy stall maintenance. Improves animal safety.



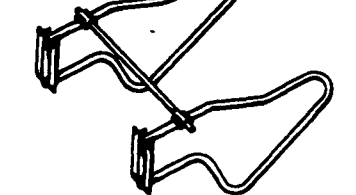
MICHIGAN

Designed for animal protection and improved ventilation. Mounting options available for easy installation.



NU-FE

Designed to allow for lunge when cow stands. Parallel ends for easy installation. 1.9 OD and 2.3 OD sizes available.



EAST COAST STYLE

Greater animal mobility while maintaining confinement. Complete animal protection. Heavy duty, mounting angles.

Training bar and clamps included. Channel or angle wall mountings standard. Heavy duty cross clamps on 6' stalls.

BERG - BENNETT INC.

RD #2 Box 113C, Wysox, PA 18854 800-724-4866 717-265-7119

Bradford County Producers Elect Directors

WYSOX (Bradford Co.)—On Thursday, December 14, 1995 a Bradford County NEDHIA Member Meeting was held in Wysox. The purpose of this meeting was the establish a Bradford County Northeast Board of Directors. The Board consists of: President: Glenn Gorrell; Vice President: Glenn Kline; Secretary/Treasurer: Daniel Hoppaugh; County Director: Kris Wright.

Bradford County is now a part of Northeast DHIA District IV that is currently represented by Keith Whittaker of Whitney Point, New York. District IV includes New York and Pennsylvania and consists of more than 500 Northeast DHIA dairy producer members in a six county area.

These newly elected county directors now participate in the Fall and Spring District Meetings in providing advice to their District Director and the Management Team at Northeast DHIA. In addition, they will have a voice in the election of the Director representing District IV.

Northeast DHIA currently serves over 4000 members in a nine state area of New York, New Jersey, Pennsylvania, Connecticut, Massachusetts, New Hampshire, Rhode Island, Maine and Vermont. Questions or comments may be directed to the DHI Center, 730 Warren Road, Ithaca, New York, 14850, or 1-800-DHI-COWS.