

# CLASSIFIEDS

## 6 DAIRY EQUIPMENT

**FOR SALE:** Lots of used claws, shells, pulsators, takeoffs, meters, weigh-jars, bucket milkers, DV-300's, receiver groups, CIP's, etc. Many brands and models. "Free" UPS shipping or delivery. **BUY-SELL-TRADE 15 day Satisfaction Guarantee E-ZEE MILKING EQUIPMENT, INC.** "Specializing in used equipment" Gordonville, PA 17529 717-768-7599

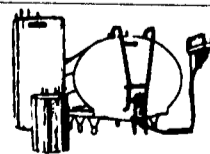
Germania automatic take-offs, very thoroughly reconditioned, most models available, sold with one year parts warranty. Delivered and installed on your farm. Buy or lease! Midstate Dairy Systems, DeRuyter, NY, 13052. (315)852-9591.

Several Zero bulk milk tanks without refrigeration, good condition, reasonable. Midstate Dairy Systems, DeRuyter, NY 13052, (315)852-9591

Stainless steel bulk tank, 650 gal., \$350. 717/279-8402 or 610/286-6718.

Universal 1 1/2" glass pipeline, 3hp pump, complete. Girton 600 gal. milk tank and compressor. 35 cattle trainers. Call (717)658-3273.

URA Bend Free Stall Dividers w/Brackets. \$15/ea. (717)524-9633.



1-1500 Gal O Mueller  
1-1000 Mueller  
1-1000 Gal DeLaval  
2-600 Gal Milkkeeper  
1-600 Gal Zero  
400 & 500 Gal. Muellers, Mojonniers, Milk Keepers, Sunset, Girtons  
MANY MORE GOOD USED COOLERS IN STOCK

MARTIN'S REFRIGERATION (717) 352-2783

### ATTENTION BUY OUT FARMERS We Need Good Used Tanks 600 - 6,000 Gal. - Call Us

- 200 Gal Sunset
- 200 Gal Jamesway
- 250 Gal DeLaval
- 250 Gal Jamesway
- 250 Gal Mueller
- 275 Gal Gruen
- 300 Gal Sunset
- 300 Gal Mueller
- 300 Gal Storage
- 300 Gal Jamesway
- 400 Gal Mueller
- 400 Gal Mojonnier
- 400 Gal Girton
- 400 Gal Zero
- 500 Gal Girton
- 500 Gal Jamesway
- 500 Gal DeLaval
- 500 Gal Mueller
- 500 Gal Mueller M
- 600 Gal Mueller
- 600 Gal Girton
- 600 Gal Milkkeeper
- 600 Jamesway
- 625 Gal Sunset
- 700 Gal Mueller "M"
- 700 Gal Storage
- 700 Gal Mueller "OH"
- 735 Gal Sunset
- 800 Gal Sunset
- 800 Gal Dan-Kool
- 800 Gal Mueller
- 800 Gal Mueller OH
- 800 Gal Mueller "O"
- 800 Gal Girton D-4
- 800 Gal Mojonnier
- 800 Gal Mueller "M"
- 900 Gal Mueller M
- 1000 Gal Surge
- 1000 Gal Mueller OH, Recond
- 1000 Gal Mueller OH
- 1000 Gal DeLaval
- 1000 Gal Mueller O
- 1000 Gal "SOLD" "OH"
- 1000 Gal Dan Kool
- 1000 Gal Sunset
- 1250 Gal Dan-Kool
- 1250 Gal Mueller, Recond
- 1250 Gal Girton D-5
- 1500 Gal DeLaval
- 1500 Gal Surge
- 1500 Gal Mueller "O"
- 1500 Gal Girton
- 1500 Gal Zero
- 2000 Gal Meuller OH
- 2000 Gal Girton D-5
- 2500 Gal Girton
- 2500 Gal Walker, Storage
- 3000 Gal Zero, storage
- 3000 Gal Surge
- 3000 Gal DeLaval
- 3000 Gal Dan-Kool, Late Model
- 3000 Gal Storage
- 4000 Gal Mueller
- 4000 Gal Mueller "OH"
- 4000 Gal Storage
- 4500 Gal Mueller
- 5000 Gal Mueller
- 5000 Gal Zero

- HEAT EXCHANGERS**
- Therma Stor 80 • Therma Stor 100
  - Mueller Fre Heater 105 Gal.
  - Therma Stor III, 120 Gal. • Mueller Fre Heater 50 Gal.
  - 300-6000 Gal. Storage Tanks

Installation Sales And Service

## RAY SHENK

505 E. Woods Drive Sales 717-626-1151 Litz, PA 17543 24 Hr. Service

### DeLaval

1 year-old Blue Diamond Double 5 Herringbone w/breast rail, 3" lowline, 10 Deltron pulsators, 10 super flow claws, 10 SST take-off w/flow master, 2000 milk meters, ID curtains, 100 transponders, computer, printer, keyboard-complete

10 Auto Cord Takeoffs For Stanchion Barn  
12 Auto Cords for Parlor  
3" Low Line for Double 8 & Double 12 Parlor (Parallel)

2 3" SS Double/Top Entry Receivers  
24 Super-flow units  
24 Delatron Pulsators  
12 SST take offs

Double 9 herringbone, SST takeoffs, 3" low line, blue diamond breast rail, 2 years old

Vacuum pump w/15 hp motor  
Double 6 3" low line w/washer  
Rationmaster computer feeder w/5 stations  
Double 4 Parlor w/take offs & weigh jars  
Double 4 parlor w/take offs & 2" low line  
78 vacuum pump  
8 Super flow claws  
8 Delatron pulsators  
6 85 lb. weigh jars  
8 65 lb. weigh jars

### Boumatic

8 2100 take offs  
6 Little Champ take offs  
Double 4 2 1/2" low line w/washer  
Double 8 3" low line  
Double 6 3" low line  
DB2000 vacuum pump w/10 hp motor  
4 star flow claws & shells  
Claws pulsators & washer

### Westfalia

3" Low Line for double 6, 12 Bio claws, 12 Stimupulse pulsators, 2800 vacuum pump, ACR3 take offs w/S.S. cylinders, 2 years old  
Back flush system for double 4  
Double 8 w/DeLaval stalls & Westfalia 3" low line, 36' Westfalia crowd gate  
4 station computer feeder  
2800 Vacuum Pump w/5 HP motor

### Surge

Double 6 Super Stall Herringbone Stalls  
Double 4 Easy Milking Herringbone Stalls  
Double 12 3" low line  
3" double 4 low line  
16 Eclipse Milkers w/pulsators  
3" lowline, for double 6  
Electrobrain washer  
(8) weigh jars w/bracket  
(16) VSO take offs  
Double 4 parlor w/take offs & 2" low line  
Double 6 parlor w/take offs & 3" low line  
100 plus vacuum pump

### Germania

20 Model B Take-offs  
8 Milking claws & shells

### Miscellaneous

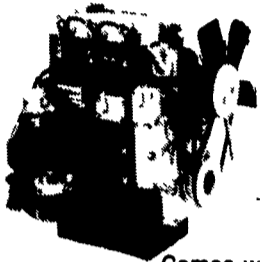
12 Choretime feeders w/Big Dutchman feed system  
Metal free stall dividers  
(2) 2" SS Pipeline for 30 stanchion barn, DeLaval, Boumatic  
20x50 Harvestore, no unloader

Buy & Sell used milk tanks - any size

Freddie S. Smith 540/639-2262

Martin's Farm Supply is a Manufacturer of Gates, Freestalls, Headlocks, Slant Bar and Fence Panels. We have the heaviest Equip. Available Anywhere With The Best Prices We Specialize In Custom Manufacturing To Meet Your Needs. **Martin's Farm Supply** Call (717) 369-5702 for Prices and Pictures.

### A New Range of Diesel Engines from



- Quiet running
- Liquid cooled
- Cast iron crankcase
- Cast iron cylinder head

Comes with starter, alternator, radiator & mounting feet Very competitively priced

GIVE US A TRY - CHECK OUR PRICES DIESEL OUR SPECIALITY

Distributor for Lister/Petter and Lombardini Diesel Engines 6-8-12V Regulated CHARGE-MASTER Battery Charger

### HOOVER DIESEL SERVICE

255 Mascot Rd., Ronks, PA 17572 (717) 656-3322 (717) 295-1729

## IN GROUND MANURE STORAGE INSTALLATIONS



- ★ S.C.S. Approved
- ★ Underlayment between Liner and Earth
- ★ High Density Polyethylene (60 mil thick) Liner Guaranteed for 20 Years
- ★ More Economical than Concrete
- ★ Leak Detection System
- ★ Installed on site by our Certified Installers



### The Vacu-Pump

- ★ High Discharge Evacuation Pump
- ★ Available With 20" and 28" Turbine
- ★ Balanced Turbine
- ★ Main Shaft Mounted On Tapered Bearings In Oil Bath
- ★ Work At 540 R.P.M.

### MANADA CONSTRUCTION CO.

LAND IMPROVEMENT & EXCAVATION CONTRACTORS 151 Meckville Road, Myerstown, PA 17067 717-933-8853 or 933-4062



Milk IS the real thing!

A 1st Class Team Together For 25 Years!



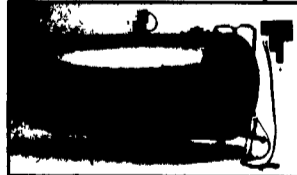
## RUFUS BRUBAKER REFRIGERATION

And...

### MUELLER DAIRY FARM EQUIPMENT

## Scroll-Compressor Technology

New in 1994



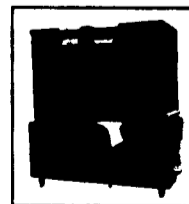
You may pay less for some dairy farm equipment... but it can cost you more!

Equipment cost is not the only cost of cooling milk

In the long run, total operating costs of a Mueller' milk-cooling system are generally substantially less than those of "bargain-brand" milk-cooling equipment.

Example	Mueller	Competition
Cost of equipment	\$41,000	\$28,000
Cost of electricity @ .08 kw for 12,000 lbs milk/day for 10 yrs	\$17,550	\$22,850
Total operating cost for ten years	\$48,550	\$50,850
Savings	\$2,300	

Contact your Mueller distributor for further comparisons.



### 6 MONTHS FREE FINANCING

For Qualified Buyer See Us Today For Details!

**Southern Service Center**  
76 Pumping Station Rd. Quarryville, Pa. 717-786-1617 Vic Leininger

## MAIN OFFICE

1048 North Penryn Rd. Manheim, Pa. 17545

717-665-3525 Ken or Ed Brubaker

**Northern Service Center**  
541 Frystown Rd. Myerstown, Pa. 717-933-4711 Ken Kopp

★ Call Today For All Your New or Used Milk Tank And Refrigeration Equipment Needs!