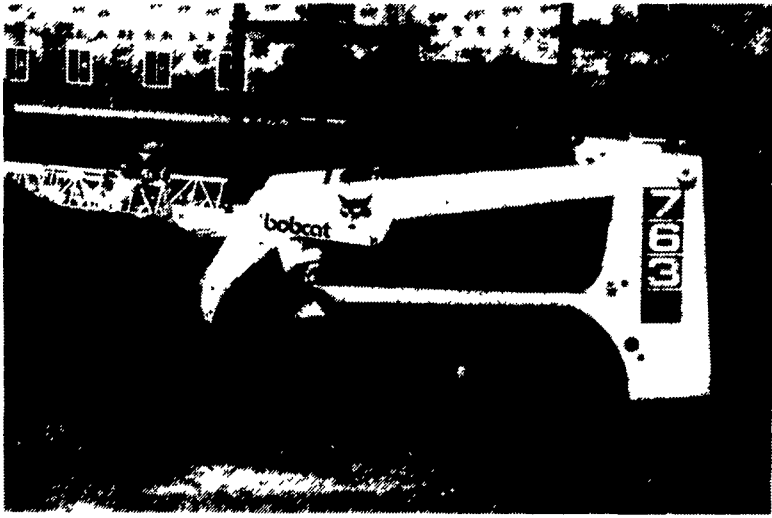


763 Improves Productivity



MAJOR FEATURES OF 763:

- Long Wheelbase, Smooth Ride
- Powerful 46-hp Diesel Engine
- Additional Lift Height
- 1500-lb. Rated Operating Capacity
- 7 mph Travel Speed



bobcat

GRUMELLI FARM SERVICE, INC.

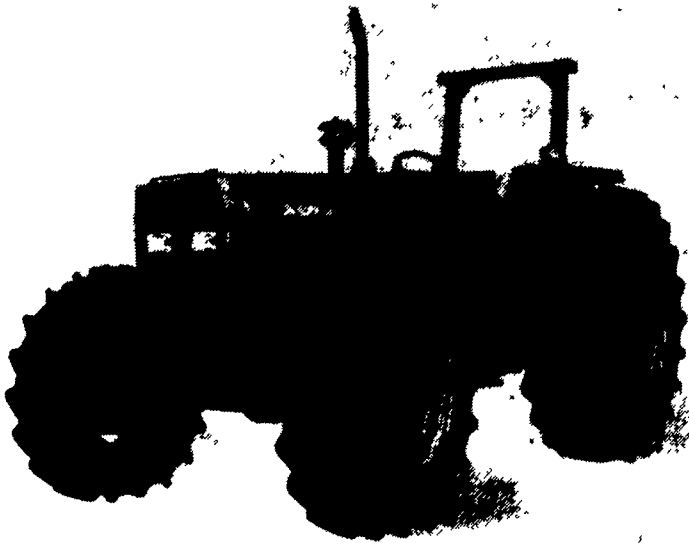
See Salesmen:
Don Fichtner
Tony Grumelli

Quarryville, Pa.
717-786-7318



bobcat

MASSEY FERGUSON 399 4WD



Features to See:

- Smooth, high-torque 95 PTO hp, 1000 Series Perkins engine
- Unique "Quadram" piston design ensures more complete fuel/air mixing for reduced fuel consumption, increased power and reduced noise
- 50° steering on 4WD, for unrivalled maneuverability
- Standard 12-speed synchromesh transmission meets all application needs

NEW & USED TRACTORS IN STOCK

New MF 253 48 HP, 8 Speed Shuttle Trans.....	Call for details
New MF 1250, 30 HP, 4-wheel drive.....	Call for details
New MF 1210 4 WD, turf, 17HP, 54" mower.....	Call for details
AC 8030 Diesel, 133 HP, cab, 4-wheel drive.....	\$21,500
Ford 3000 Diesel, 40 HP w/dual loader.....	\$8,500
MF 275 Diesel, 67 HP, good condition.....	\$8,400
MF 65 Gas 46 HP.....	\$3,600
MF 50 Gas, 34 HP.....	\$3,400



MASSEY-FERGUSON

Lebanon Valley Implement Co., Inc.

700 E. Linden St., Richland, PA 17087
(717) 866-7518

Massey Ferguson is a wholly owned subsidiary of AGCO Corporation, Duluth, GA

DEPENDABLE MOTOR CO.

East Main St., Honey Brook, PA
610/273-3131 or 610-273-3737

- | | |
|---------------------------|-------------------------|
| NH 565 Baler w/72 Thrower | Sprayer Dye Marker |
| NH 456 Mower | Richie Hog Waterer |
| NH 310 Baler | JD 4250 Tractor w/Cab |
| NH 30 Forage Blower | JD 2700 Plough 5x18 |
| NH 770 Pick-Up Head | JD 215 TR Disc |
| NH 316 Baler w/Thrower | JD 1010 TR Harrow |
| NH 489 Haybine | JD 8350 Gr. Drill |
| NH 258 R. Rake | JD 7000 Corn Planter |
| NH 520 Manure Spreader | JD 350 Cutter Bar Mower |
| NH L783 Skid Loader | |

New Demco 500 Gallon Sprayer
45' Hyd. Fold Boom, Cyn. Pump,
Elec. Control \$7,120

PCP super blast high pressure washers, 1000 PSI & up, cold & hot water units

WE REBUILD
489 WOBBLE BOXES

DEALER FOR
Roskamp



NEW HOLLAND

MARTIN'S FARM SUPPLY



FREESTALLS
2 1/2" OD Pipe
Sched. 40 Pipe
.145 Wall Thickness
4 Bolt 1/4" Clamp
Painted & Galvanized
Bracket Board Bracket



HEADLOCKS
1 1/2" OD Pipe
Sched. 40 Pipe
3 Sizes
Adjustable
Quick Release



GATES
5 Bar
48" High
1 1/2" Pipe
.145 Wall Thickness
Sched. 40 Pipe
Strap Hinges
Spring Latches

- | | |
|------------------------|---------------------------|
| Fence Panels | • Slated Bar Panels |
| Up North Silage Covers | • Sunfilm Stretch Wrap |
| Weiger Round Balers | • Corry Roll-Off Wrappers |
| J&L Feeder Wagons | • J&L Hay Savers |

Martin's Farm Supply

Call St. Thomas, PA 717-369-5702
7 Miles West of Chamberburg, Pa

Best price on DOUBLE RING TRACTOR CHAINS

Northeast Distributors
& Equipment

West Clifford, PA

VAN DALE

Dependability through Quality

Division of J-STAR Industries, Inc.

LIQUID MANURE SPREADERS



SLINGER VACUUM

2700 & 3300 Gallon Models with full-length internal auger
2700 & 3300 Gallon Models with reliable Jurup vacuum pump

USED EQUIPMENT

- 190 Cu. Ft. Rissler Mixer w/Scales, Motor, Complete
- 2120 Knight w/Scales Complete
- Knight Little Auggie w/Scales, Portable
- 3300 VD Slinger Rank
- VD Lagoon Pump, Demo

We Will Service All Brands Of
Electronic Scales & Most Brands Of Mixers

MILLCREEK FENCE & FARM SYSTEMS

2285 Old Philadelphia Pike
Lancaster, PA 17602 — (717) 396-8987

Used Equipment

USED TRACTORS

- Case IH 7110 Magnum, 1,496 Hrs., Very Clean
- Case IH 1120 w/106 loader, 165 hrs.
- Case W930
- Ford 4100 w/cab, low hrs., nice
- IH 5088, 3,100 hrs., nice
- IH 3388, 2+2, nice
- IH 1086 w/cab, nice
- IH 784 w/2250 Loader
- IH 706, Diesel

USED HAY & FORAGE

- Gehl 1060 Forage Harvester
- JD 1209 Mower Conditioner
- NH 489 Mower Conditioner
- IH #8 Flail Chopper
- Papec 870 Grinder Mixer
- Deutz Fahr 6 Star Tedder
- Deutz Fahr KS150 3Pt. Rake
- JD 336 Baler w/Kicker
- Gehl 1850 Round Baler
- NH 315 Baler w/Thrower
- Stohl 410 Tedder Rake
- IH #50 Stalk Shredder
- Case IH 8830 Windrower w/12' Head, 970 Hrs.

USED TILLAGE EQUIPMENT

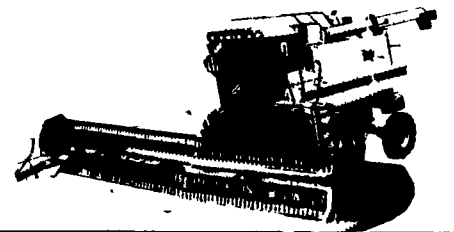
- Int. 461 4 Row Front Mounted Cultivator
- Kewanee 3 Pt. Field Cultivator, 20
- IH 361 16' Transport Harrow
- IH 475 20' Disc

GRAIN HARVESTING

- IH 820 w/13' Flex Head
- NI 323 1R Corn Picker

New Vicor Seeders in Stock

- Case IH 1660 combine w/specialty rotor
- Waiver of Finance Till 9/1/96



USED COMBINES

- Gleaner M2 w/ 1500 sep hrs. w/ 4 row wide corn head & 15' grain head
- MF 750 Combine w/6 Row Corn Head
- Case 660 w/2 Heads
- MF 410 w/2 Heads
- IH 93 w/2 Heads
- NI 813 Flex Head
- NI 844 Corn Head

- * Loftness 66" 3 Pt. Snow Thrower, 1 Yr. Old
- * IH 574 Diesel Tractor
- * Mitsubishi MT 250 D, 4WD Tractor, 683 Hrs.
- * Case IH 7120 Magnum 2 WD w/ Creeper Drive, 1,200 Hrs.
- * NH 315 Baler w/58 Thrower
- * Miller Pro 6 Row Cultivator w/Demco 200 Gallon Side Dresser w/Ground Drive Pump, Used 1 Season
- * Great Plains 10' No-Till Drill, Used 500 Acres

* This Equipment Sold At
D & E Equipment
Bloomsburg, PA
717-784-5217

Eckroth Bros. Farm Equipment

RD 2 Box 24A, New Ringgold, PA 17960

717-943-2131

7:30-5:30 Mon.-Fri. 7:30-4:00 Sat.