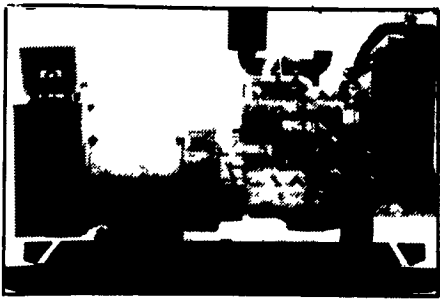
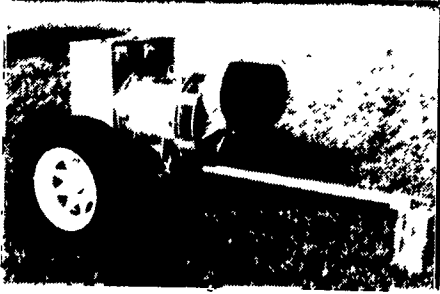


GENERATORS



**AUTOMATIC and
MANUAL SYSTEMS**

**DIESEL
L.P. GAS
NAT. GAS
NEW & USED**



**LEROY SOMER
PTO ALTERNATORS**

**BRUSHLESS
INDUSTRIAL GRADE
11 to 60 KW**

READY FOR THE NEXT STORM?

For Sales and Service Call The People Who Know Generators

MARTIN ELECTRIC PLANTS

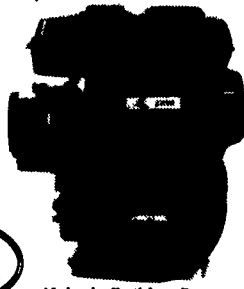
280 Pleasant Valley Rd., Ephrata, PA 17522-8620

Tel: 717-733-7968 Fax: 717-733-1981

If we could build a better Robin, we would! AND WE DID!

Try the new Robin
(Formerly Wisc.-Robin!)

Same quality features they always had but now with Overhead Valves and all the latest technology. All this plus a much lower price (Due to more direct marketing) makes it today's best engine buy.



Nobody Builds a Better Engine Than Robin!

- EY080 2 h.p. Ideal wash machine engine\$219.00
 - Exhaust nipple to accept flex pipe\$4.00
 - EY20 5 h.p. tapered shaft to fit generators*.....\$255.00
 - The following are all overhead valve engines:
 - EH12 4 h.p. w/6-1 reduction (Ideal for pump jacks).....\$259.00
 - EH25 8 h.p. w/threaded shaft to fit water pumps*.....\$259.00
 - EH34 11 h.p. w/tapered shaft to fit generators*.....\$539.00
- *The 3 above engines can be used for pulley drive if a taper lock pulley hub is used.

3" pulley w/hub.....\$15.95

All prices are postpaid.
Other models also available
Dealer inquiries invited.

**Annual
WINTER DISCOUNT
PROGRAM
Now In Effect**

**10% Discount On Parts &
Labor On Engines Scheduled
For Repair Before 1/31/96.**
(applies to repairs over \$100 done in our shop)
**Schedule Now For
Winter Rebuilding**

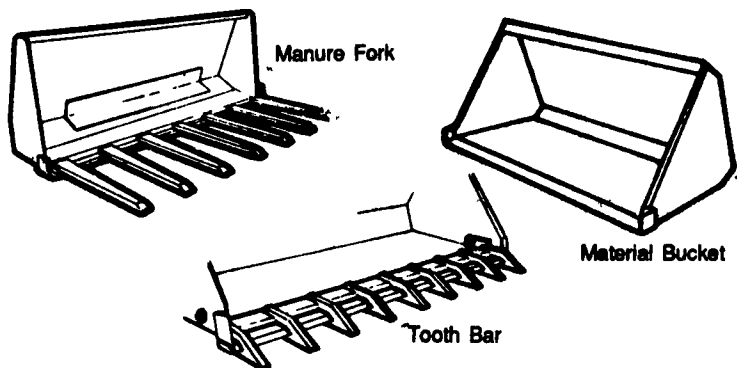
Authorized
Service
Center

• Complete Rebuilding
• Large Parts Inventory

**F I S H E R
E N G I N E
S E R V I C E**

3141 Old Philadelphia Pk • Bird-In-Hand, PA 17565
717-768-3729 (8-9 am)

ATTACHMENTS for Skid Steer Loaders



- Standard or Custom Sizes
- Hardened, Beveled Edge
- 7 gauge Material (other gauges available)

Call for a Quote!

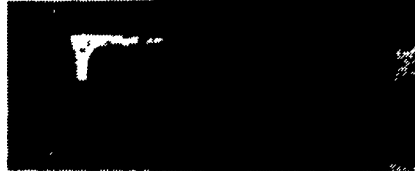
PA (717) 354-8721

US (800) 342-0905



325 West Main St., New Holland, PA 17557

Take Exit 20B
Off Of 83, 5 1/2 Mi. West
To Belmont Farm.



(File Photo)

**Clean Colorado Tractors
Case 900 w/Cab, 71 H.P., Diesel,
Dual Hyd., Live PTO**

\$2,700

Also Available:

Case 900 Fender

\$1,200

**Case 930D Comfort King, 85 H.P.
Diesel, Foot Clutch, Cab,
Dual Hyd., LPTO, No 3 Pt.
\$3,500**

Financing & Trucking Available

410-833-9091

JOHN DEERE

**TODAY'S GOOD DEAL AT
GOOD DEAL HEADQUARTERS**

TRACTORS

- JD 4960, 1992, MFWD, Power Shift
- JD 950 Compact Utility, 2WD
- *Case 2090 w/Cab & Air, 3,000 hrs.
- Deutz 9170, 4WD

COMBINES

- JD 9600, 4WD, Duals, 1,176 Hrs.
- JD 9400, 2WD, 1994, 135 Hrs.
- JD 9500, 4WD, 1994, 264 Hrs.
- JD 8820, 1983, 4W **SOLD**
- JD 7720 Titan II, 1987
- *JD 7700, 1976, 4WD, Hydr **SOLD**
- JD 6620, Combine 2WD, Reconditioned
- *NI 311, 2 Row Corn Picker w/314 Sheller Attachment
- JD 920 Flex Platform
- JD 920 Platform
- JD 920 Platform
- JD 922 Flex Platform **SOLD**
- *JD 216 Flex Head
- *JD 220 Flex Head
- JD 693 Corn Head
- (5) JD 643 Corn Head, Field Ready, Excellent Condition
- JD 643 Corn Head, Low Tin, Oil Drive **SOLD** Old
- *JD 643 Corn Head, 1985 Model

PLANTERS

- JD 750 No-Till Drill w/Markers
- MF 43 Grain Drill, 22x7
- JD 8300 Grain Drill, 21x7
- *IH 5100 Drill, 21x7
- *JD 7240 Planter, 6/11 Row, Dry Fert., Auger Fill
- JD 7200 6 Row Planter, Liquid Fert.
- JD 7000, 6 Row w/5 Row Splitter

MISCELLANEOUS

- *JD 348 Baler, Like New
- JD 348 Baler
- JD 327 Baler, Nice Condition
- *Rhino 15' Batwing Mower
- *Bush Hog 15' Batwing Mower
- Woods 20' Batwing Mower
- JD F935 Front Mower
- JD F725 Gas Front Mower
- JD F935 Diesel Front Mower
- Brillion 23' Crow Foot Packer
- *JD 27 Shredder
- *IH 60 Shredder
- Tufline 6' 3 Pt. Di. **SOLD**
- JD 400 Rotary Hoe, 15'
- JD 201 Implement Trailer
- *JD 724 Mulch Finisher, 19'
- Brillion 20' Field Cultivator
- JD RM8 Cultivator
- *JD 1508 15' Rotary Cutter
- *Bush Hog 10' Rotary Cutter w/3Pt. Hitch

GOOD DEALS AND A GOOD DEAL MORE

W.N. COOPER & SON, INC.

Morgnac Rd.
Rt. 291

Chestertown, MD
410-778-3464

Rt. 282

Cecilton, MD
410-275-2195

*Cecilton Location

USED TRACTORS

"Will buy or trade tractors"

- JD 4450 MFWD, SGB, 3400 hrs.....\$43,000
- JD 4250 MFWD, 1988, 2800 hrs.....\$42,500
- JD 4650 MFWD, New Engine, 1985.....\$40,500
- JD 4640 SGB, PS, 1 Owr, Gd Cond ..\$23,500
- JD 2555 w/2600 hrs., orig. 2 hyd ..\$17,000
- JD 2355 1200 hrs., roll bar, mint cond ..\$16,500
- JD 2140 hi/lo, ind. PTO, 75 hp.....\$12,700
- JD 4030 SGB, quad range, 2 hyd., ..\$11,900
- JD 2940 hi/lo 2 hyd., ind PTO ..\$11,500
- Case 1845C skid ldr., 1989, 3307 hrs...\$11,100
- JD 4030 4 post recent overhaul, good cond..\$10,600
- JD 870 1993, 330 hrs., 2 yrs. new warr....\$9,800
- JD 4020, 1970, SR trans, original.....\$9,800
- JD 550 (435) Round Baler, Ex. Cond ..\$9,500
- JD 2840 hi/lo, 2 hyd., 3273 hrs.....\$9,300
- JD 4000 SR trans, WF, nice.....\$9,200
- JD 4020 38" rubber, 2 hyd. 3500 hrs., orig. \$8,800
- JD 2130, ind. PTO, fresh eng. overhaul....\$7,800
- JD 1830 diesel, 60 HP, orchard model.....\$7,600
- JD 2510 w/239T motor, new paint.....\$7,100
- JD 1040 diesel, 50 HP, cab, 1982 **SOLD** ..\$6,900
- JD 2130 hi/lo ind PTO, ..\$6,800
- JD 3010 NF, cab, w/46 ldr.....\$6,500
- JD 1120 ind. PTO, new paint, good cond..\$6,500
- JD 4020, gas, 2 hyd., 3500 hrs., nice.....\$6,400
- JD 2120, hi/lo, dsl., 55 HP, new paint.....\$6,200
- JD 820 dsl., 3600 hrs., new paint.....\$5,800
- JD 245 loader w/valve.....\$3,300
- David Brown 1200 dsl., 65 hp.....\$2,600
- JD factory WF for 3020 thru 4020, new....\$1,350
- M&W turbo complete for 4020.....\$800
- JD 4020 or 3020 toplinks brand new.....\$165 ea.
- New Woods Dual Loaders in Stock...20% Off List

"Jesus Is The
Reason For The
Season"



Reiff Farm Service

275 Goodhart Road, Shippensburg, PA 17257
Interstate 81, Exit 10. 174 East, Goodhart Rd Right
Can Finance

Phone or Fax (717) 532-8601



Magnum 7110, 130 HP,
2WD, low hours
\$34,900



Magnum 7220,
950 hours
Under \$60,000



Case 580K, 4WD,
Extendahoe,
One Owner



Case 580K,
One Owner, Cream Puff
\$23,000



Case 455C Crawler Loader
\$46,500 \$15,900



Massey Ferguson 50A
Industrial Tractor Loader
No. 3 Pt. or P.T.O., \$4,995

USED EQUIPMENT

- New Holland 355 grinder mixer, 7' auger extension
- New Holland 718 forage harvester,
2 row & hay pickup
- New Holland 273 baler & thrower
- Gehl 12 ton running gear tandem, used
- MF 2 bottom disc plow
- Fordson 8' disc harrow, 3 pt.
- Bush Hog 12' disc harrow, transport, needs work
- A-C field cultivator, 12' pull type, transport
- Deutz Allis round baler, 5x6 soft core
- Case 60 loader fits DB 1210, good condition
- Case 1845, Diesel, One owner, good
- New Idea 244, tandem axle, 320 bushel
- Gehl 322 Scavenger, 1 yr. old
- Martin 1678 Scavenger, 2200 gal. good for slurry
- Case IH 65' finish mower, 3 pt., 1 year old
- Keen Kutter 6' rotary mower, 3 pt.
- Knight Auggie 12, 280 cu ft.
- Case 1834 diesel unloader

A.L. HERR & BRO.

Park Ave., Quarryville, PA 17566

(717) 786-3521

We Ship Parts U.P.S.

© 1995 CASE CORPORATION
Case IH is a registered trademark of Case Corporation.

