



**WOLF MOTOR CO.**

OVER 60 YEARS IN BUSINESS!  
 ROUTES 72 & 283, LANCASTER, PA 17601

**CENTRAL PA'S  
 FORD TRUCK DEALER**

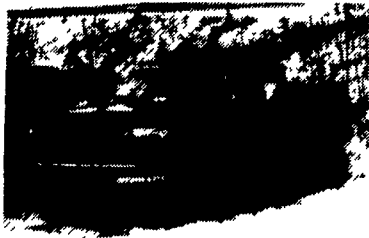
Sales Reps.  
 Charlie Burke

Gary Brenneman  
 Dennis Asel, Mgr.

717-299-4331 Toll Free 800-637-6612



**1995 FORD F800**  
 Single Axle Dump 25,000 GVW,  
 190 Hp Diesel 5+2 Speed  
**\$34,600**



**1996 FORD F350 4X4**  
 Power Stroke Diesel, Auto Limited Slip,  
 8 Dump Body, 8' Snow Plow



**1981 FORD LN 8000**  
 10' Dump Body, 3208 CAT Diesel,  
 5+2, 33,000 GVW  
**\$9,900**



**1994 FORD F350 XLT**  
 351 V-8, 5-Speed Manual  
 9' Steel Flat Bed  
**\$16,800 \$16,200**



**1989 FORD LS 8000**  
 33,000 GVW, 215 HP Diesel,  
 6 Speed, 24' Van Body w/ Lift Gate  
**\$16,900 \$15,900**



**1991 FORD LN 7000**  
 170 HP Diesel, 6 Speed Trans,  
 22' Van Body, 26,000-GVW  
**\$17,400 \$16,200**



**FOR SALE: 1985 Mack Truck**  
 350 hp, 9 Speed Mack Transmission, 462 Ratio,  
 Postraction Mack Rear, Power Steering, Aluminum  
 Budd Wheels, 11R 225  
 March '95 - NEW Engine, Clutch, Fuel Pump,  
 Alternator, Starter, Air Compressor (60,000 mi on  
 engine) Asking **\$18,000.00 OBO**  
**Call Larry Ruhl (717) 656-9545**  
 \* Limebox not included  
**Also for sale: Wet Line & Fifth Wheel**



**MACK 6x6 TRUCKS**  
 Cummins V8 Diesel Jake and full Air Brakes  
 P.S. 1400/24 Tires Double Frame Rear Drag  
 Winch (50,000 lbs.), Differential Locks, (60  
 Tons) Hauling Capacity. Like New Only 800-  
 17,000 Miles. A must for every Farmer.  
**\$10,500 to \$12,500**  
**(814) 834-1018 St. Marys, PA**

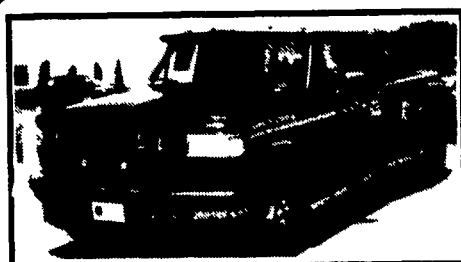
**HOSTETLER**  
**Truck Bodies & Trailers**  
**717-667-3921**  
 Milroy, PA - Located between Lewistown  
 And State College on Rt. 322 in PA.

 14' Gooseneck Grain Trailer, 15,000 GVW, Elec. Hyd. Hoist, 40" Sides <b>\$7,200</b>	 New Designed Corn Pro Bumper Pull Livestock Rubber Torsion Axles, Treated Pine Floor 6'x16' 3500# Axles <b>\$3,250</b> 6'8" Wide x 16' Long 3500# Axles <b>\$3,395</b> 6'8" Wide x 16' Long 6000# Axles <b>\$3,695</b>	 6'x12' Enclosed Cargo, 3000# GVW, Side Door, Torsion Axle, Radial 15" Tires <b>\$2,495</b>
 18' Used Utility Flat Bed, 10,000 GVW, Rear Mesh Gate <b>\$1,495</b>	 12' Used 2 Horse Combo Trailer, 7' high, Torsion Axles, 1994 Model <b>\$2,495</b>	 16' All Purpose Trailer, Oak Floor, Ramps, Electric Brakes Was <b>\$2,495</b> Now <b>\$2,295</b>
 <b>SPECIAL SAVINGS</b> Fits Full Size Ford and Chevy Pick-Ups <b>\$95</b>	 Used 16' Livestock, Handy Man's Trailer <b>\$795</b>	 1985 Dodge 1-Ton Stake Body Truck, Cross Body Tool Box, 360 Gas, Auto, 10,000# GVW <b>\$3,795</b>

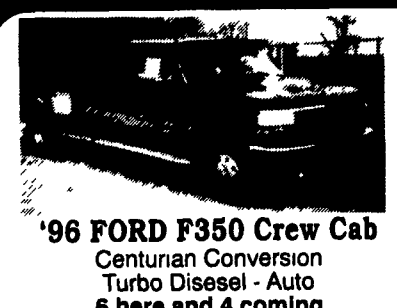
Mark Vills • Pickups • Broncos • Stake Body • Crew Cabs

Contours • Aspires • Diesel Pickups • Mustangs • Thunderbirds

Explorers • Grand Marquis • XLTs • Custom Vans



**Great Selection  
 F250's & F350's  
 Supercab &  
 Crew Cab**  
 Power-Stroke Diesels  
 In Stock



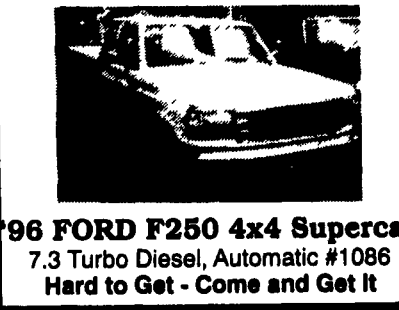
**'96 FORD F350 Crew Cab**  
 Centurian Conversion  
 Turbo Diesel - Auto  
 6 here and 4 coming



**'96 FORD F250 4x4**  
 Crew Cab - Turbo Diesel  
 Brand New Model - Auto #1175  
 Save \$1,500 on this unit



**'95 RANGERS 4x4**  
 w/Luxury Package, 10 to choose from  
**Big Discounts**



**'96 FORD F250 4x4 Supercab**  
 7.3 Turbo Diesel, Automatic #1086  
 Hard to Get - Come and Get It



**'96 FORD EXPLORERS**  
 945 A Package  
 30 To Choose From



**'96 FORD WINDSTARS**  
 "the Future Of Minivans"  
 - 20 To Choose From



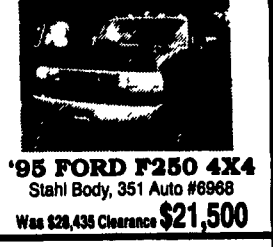
**'95 LEFTOVER F150'S**  
 Only 5 Left - Big Discounts  
 Hurry, they're going fast!



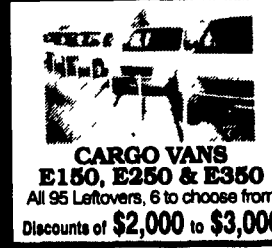
**'96 FORD F350 CREW CAB  
 DUALY 4x2**  
 A Centurian Pkg #1266  
 Five To Choose From



**'94 FORD F150 4x2**  
 V8, 5 Spd., XLT Pkg. #P2463  
 Was \$14,999 NOW **\$14,150**



**'95 FORD F250 4X4**  
 Stahl Body, 351 Auto #6968  
 Was \$28,435 Clearance **\$21,500**



**CARGO VANS**  
**E150, E250 & E350**  
 All 95 Leftovers, 6 to choose from  
 Discounts of **\$2,000 to \$3,000**



**'94 FORD F150 Super Cab**  
 V8, AT, XLT Pkg, Captains Chairs,  
 Only 20,000 Mi., Ex Shape #P2282  
 Was \$19,999 NOW **\$19,000**



**'93 FORD F150 4x2**  
 6 Cyl., 5 Spd.; Custom XL, #7090A  
 Was \$10,900 NOW **\$9,999**



**'96 F350 CREW CAB**  
 7.3 Power Stroke, 5-Spd., XLT,  
 Single Rear Wheels

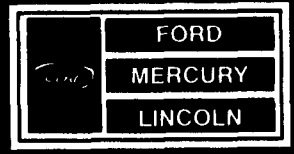


**'93 FORD EXPLORER 4x4**  
 6 Cyl., AT, A/C, Loaded, Sun Roof,  
 23,000 Mi. #PR2377  
 Was \$21,999 NOW **\$17,999**



**'94 FORD F150 4x2**  
 302 V8, AT, XLT Pkg., #7276A  
 Was \$15,999 NOW **\$13,499**

Unless the Sheehy Emblem is on Your Car or Truck, ... You Probably Paid Too Much!



**SHEEHY LEBANON**

**-20th & CUMBERLAND STS. - RT. 422 WEST**  
 9-9 DAILY; 9-5 SATURDAY • SHEEHY HOTLINE (717) 272-7671 OR 533-5293

PARTS DEPT OPEN  
 DAILY 8-5  
 SAT 8-12  
 717-273-8168

Mystiques • Cougars • Continentals • Town Cars • 4x4s • Rangers