

Keystone Peterbilt, Inc.

1467 Manheim Pike • P.O. Box 4396 • Lancaster, PA 17604

1-800-243-2458



717-299-6630



1989 PETERBILT 379, 490,000 approx. miles, 63" Low Sleeper, 127" BBC, 3406 Eng (425) @ 2100, 425 HP, Jacobs Brake, RT014715 Trans; 15 Spd., Rebuilt, R Axle, DS402, 40,000 Lb 3.70 Ratio

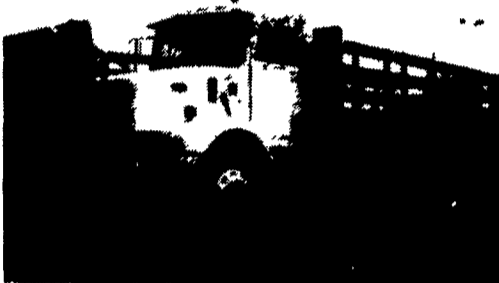


1996 FORD F-150, 6 Cyl., 4 Speed, Inspected, 202,000 Miles, AM/FM/Cassette, Good Mech Shape \$2,995 Ask For Herv



1989 PETERBILT MODEL 379 with 36" Walk-in Sleeper, Long Hood, Cummins Big Cam 4 350 H.P.; RT014613 Speed Transmission, Sq. 100 Rear Axle 3.73

1996 PETERBILT 330 with Morgan Stake Body HPA-16, 16'6" Length, 96" Width; Low Air Ride Susp.; Cat 3116-230 Eng.; Fuller FS6306A - 6 Speed Trans.; Eaton R. Axle, 33,000 GVW. AVAILABLE WITHOUT BODY ALSO!



1990 PETERBILT - Model 378 - 48" Sleeper, 3406-425 Hp, RTO 15618, DS 402370, Air Ride Susps



1989 & 1990 PB 378, 48" High Rise Sleeper, 3406-350 HP. Cat, RTX 14609B Trans., DS 402 4:11 Ratio, Air Susp., P.S.

THOMPSON MOTORS INC.
 Repairable Vehicles Bought & Sold
 Springtown, PA 610-346-8588
30 FLOOD CARS IN STOCK, MOST RUN & DRIVE
Specials of the Week
 '92 Ford F150 4x4, 351 V8, Automatic, Vandallized, Blue/Gray \$5,900
 '95 Chevy S10 Extended Cab, Green/Black, V6 Auto,
 Water Damaged \$11,500

CHAINS
 Car, Truck - Tractor
 All sizes in Stock
 Save up to 40% off until Nov. 31, 1995
 Meyer Snow Plow, Salt Spreader
 Parts & Service
EAGLE MACHINE CO.
 Route #100 Eagle, PA
 Chester Co.
610-458-5326

<p>ALL STEEL REPLACEMENT TRUCK BED</p> <p>7'Lx71"W or 85"W 8 1/2'Lx80"W or 90"W 10'Lx8"W, 12'Lx8"W</p>	<p>STARTING AT \$795.00</p> <p>Car Dollie</p>	<p>HIGHWAY HYDRAULIC DUMP</p> <p>5'x8', 3000# \$2,050 6'x10', 7,000# \$3,095 6'x10', 10,000# \$3,495 7'x12', 10,000# \$3,995</p>
<p>Also Available in 4'x7' and 4'x8'</p> <p>5'x8' Starting at \$650 5'x10' Starting at \$695</p> <p>UTILITY (TILT OR GATE MODEL) SIZES: 5'x8', 5'x10' 2000# GVW - 5'x10', 6'4"x10', 6'4"x12', 3000# GVW</p>	<p>USED 10' V-Type Snow Plow Asking \$650 NEW 8 1/2'x90" Wooden Floor Truck Beds Asking \$550</p>	<p>DROP AXLE CONSTRUCTION 14' 7000# or 12,000# GVW</p>
<p>UTILITY WITH GATE-SIZES: 16'x76", 18'x76", 7,000# GVW, 20'x81" 12,000# GVW</p> <p>Also Available in Car Haulers 16', 18' 7,000# GVW</p>	<p>Over 400 Trailers In Stock Starting At \$475.00 T-Plates DEALERS WANTED</p>	<p>Starting At \$3795 w/4' Adj. Tail</p> <p>GOOSENECK SIZES: 20'x8' 12,000# or 14,000# GVW, 24'x8' 14,000# GVW</p>
<p>FLAT BED: Sizes: 16'x76", 18'x81" 7000# GVW, self storing 80" long ramps</p>	<p>Over 400 Trailers In Stock Starting At \$475.00 T-Plates DEALERS WANTED</p>	<p>DECK-OVER CONSTRUCTION 18'x8' w/Tail 10,000# GVW \$2,995 & \$3,295</p>

KUTZ FARM EQUIPMENT, INC.
 Pine Grove, PA (717) 345-4882
 SAVE 5 PM MONDAY TO FRIDAY
 SAVE 12 SATURDAY OR BY APPOINTMENT

LANCASTER COUNTY'S NEWEST FORD DEALERSHIP

DUMP BODIES, UTILITY BODIES, CLUB WAGONS, FF-250s & F-350s, 4X2, 4X4

Inquire About Ford's Commercial Rebate

'96 F-350 Chassis Cab
 161" WB, 351, HD Speed, 11,000 GVW, 4.10 Post Rear, Handling Package, A/T Tires

'96 F-350 Utility
 351 V8, Automatic, Dual Tanks, Air Condition, Reading Service Body, Ladder Racks, and more.

New '95 F-250
 8800 GVW, 351 V8, Automatic, Trailer Tow, XL Trim, Air Cond, Stereo, Step Bumper, Priced To Move Out!

'96 F-350 Crew Cab
 "DUALY", Powerstroke Diesel, 5 Speed, 4.10 L/Slip Rear, Camper Package, XL Trim, Air, Tilt/Cruise, Stereo, Step Bumper, Bright Red Clearcoat

'96 4x4 Chassis Cabs
 2 Powerstrokes In Stock w/4 10 L/Slip Rear, 5 Speed Manuals, Lock In-Out Hubs, 1 XL Package, 1 XLT w/Everything. They won't last long.

'96 F-350 Dually
 Regular Cab, Power Stroke, 5 Speed H.D., 4.10 L/Slip Rear, Cassette, Air, Tilt, Cruise, Trailer Tow, XL Trim, Very Affordable

'96 F-250 4x4 w/Flow
 XL Trim, 5.8L, Auto, O/D, 4.10 Rear, Air, Bedliner, 8' Meyer Plow, Be Ready For Snow!

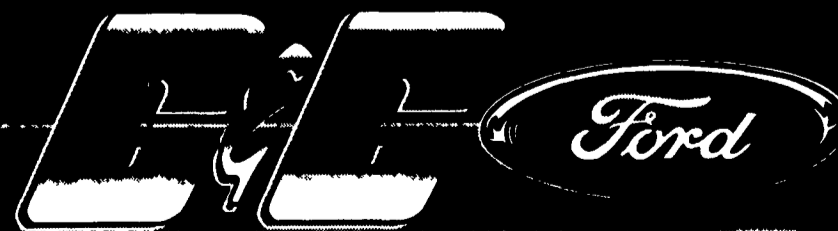
'96 Power Stroke Diesels
 1 F-250 XLT 4x4 5 Speed
 1 F-250 XLT 4x4 Automatic
 1 F-350 XLT 4x4 5 Speed

'96 F-350 SUPER CAB
 "DUALY", XLT Trim, 7.5L V8, 4 Speed Automatic, 4.10 L/Slip Rear, Beautiful Toreador Red Metallic and Loaded w/Absolutely Everything

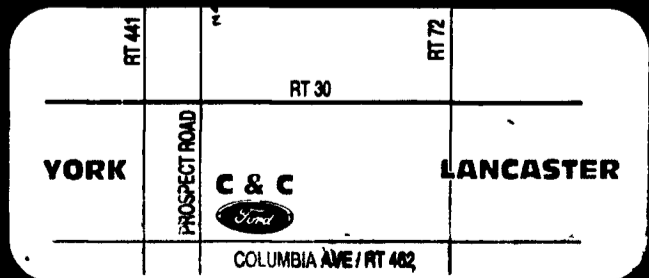
'96 F-350 Crew Cab
 351 V8, Singer Rear Wheel, XL Trim, Automatic, Stereo, Step Bumper, Trailer Tow, 2 In Stock

CHOOSE FROM THE AREAS NICEST PRE-OWNED TRUCKS, VANS & SPORT UTILITIES!

'95 F-250 Extended Cab Powerstroke Auto, XLT Lo Miles	'95 Bronco 5.8L, Eddie Bauer Pkg., Bal. Factory Warr., Loaded and Like New	'95 Chev G-30 Cargo Van 8600 GVW, 350 V8, 3.73 Post-Rear, Air, P. Locks, Glass Pkg., 12,000 Miles	'95 F-150 4x4 XLT 302 V8, Auto., Tu-Ton, Loaded, 1 Owner Trade	'92 F-150 XLT Supercab, 5.0L, Auto, Long Bed, Loaded & Like New!	'95 Chev S-10 Ext. Cab, LS Trim, Alloy Wheels, 4.3L V6, Auto., Air, Tilt, Cruise, Only 12,500 Miles	'92 Aerostar All Wheel Drive, Extended Length, XLT, Loaded, Low Miles!	'94 F-250 4x4, Supercab, 460 V8, Automatic, XLT Trim, Cap, Bedliner, 1 Local Owner	'94 Ranger Supercab 4x4, XLT, V6, Automatic, Air, Tilt, Cruise, 14,000 Miles, Super Nice Truck	'93 Ranger Supercab 4x4, XLT, Automatic, Bedliner, Air, Fiberglass Cap and More, Right Miles At 41,000
---	--	---	--	--	---	--	--	--	--



Excellence and Value in All We Do
 A Division of Chapman Management



3951 COLUMBIA AVENUE ROUTE 462, COLUMBIA, PA 717-285-7111 • 1-800-922-7507