

NEED A TRUCK TO HAUL YOUR ANTIQUE TRACTOR TO SHOWS?

1956 Ocean Blue Ford F-650

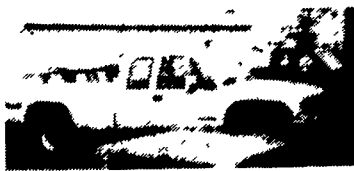
15' Flatbed Truck w/new Oak Bed, Original Motor, Runs Good.
\$4,500/obo. (717) 359-7560

USED TRUCKS



89 Ford F-250 4x4 XLT Lariat, 8600 GVW, 351 Fl. Auto, PS, PB, AC, Cruise, Tilt Wheel, PW, Pdl, Dual Tanks, Rear Sliding Window, 56,000 Miles, Two Tone Blue & White, 1 Owner

\$12,900



93 GMC 3500 Ext Cab, 6.5 Turbo Diesel, 4x4, 5 Spd., PS, PB, Rear Sliding Window, 52,000 Miles, Local One Owner

\$18,400

Financing Available

MARTIN'S AUTO SALES

1025 W. Main St., New Holland, PA 17557
(717) 656-6621

MACK PARTS FOR SALE

1. 1991 MACK CH REARS - 38,000 lb. Henderickson Air Ride Differential Lock, 10 Hole Pallet Mount Hubs
2. WET LINE - Direct Transmission PTO Mount (For Mack Transmission) Steel Reservoir
3. SLIDING FIFTH WHEEL - Lite Weight
4. ALUMINUM HALF FENDERS
5. 10-10 HOLE UNIMOUNT WHEELS 24-5 - STEEL

(717) 656-9545



1984 KW Tractor 3406B
 400 HP, 13 Sp. with 8-bag air ride.
\$7,500 o.b.o.

Also hydraulic 5th wheel for yard truck **\$2,500 o.b.o.**

Four Seasons Produce, Inc.

1975 N. Reading Rd., Denver, PA 17517
1-717-336-2800 • 1-800-422-8384
 Ask for Ken Martin

KEYSTONE TARPS

SERVICE AND SALES
 Is A Manufacturer Of Custom Tarps

- Systems
- Tarps Straps
- Storage Covers
- Load Straps
- Gloves
- Used Railroad Ties



1-800-798-TARP (8277)



Fax 717-435-0036

717-435-0752

LESHER Mack SALES & SERVICE

27th & Cumberland St. Route 422 West

Lebanon, Pa 17042



(3) 1990 Mack CH612; EM6-250L; T2050; 5 Spd.; 12 Ft.; 23 Rear Axles; 4-88 Ratio; 139" WB; 63 Gal. St. Tanks; Spoked 275/80R 22.5's; PS; No AC.

1-New MS 200P, Non CDL Chassis

\$18,500

717-273-4535

R & R CAR AND TRUCK CENTER

1657 Rohrerstown Road, Lancaster, PA



1983 GMC
 16' Aluminum Step Van, 350 Gas, Automatic, Wide Body, PS, PB
\$3,900

1983 Mack MS300,
 6 Cyl Diesel, 5 Spd., P/S, A/B, 35,000 GVW, Only 106,000 Miles, New Insp., Clean

\$7,500



1981 Ford LN800,
 429 V8 Gas, 5 & 2 Spd., P/S, A/B, 35,000 GVW, with 2,800 Gal., Tank Plus Meter & Hose Reel

\$6,900

1988 IHC S1954,
 With Toter Package, DT466, 215 HP, 5&2 Spd., A/B, A/C, P/S, 35,000 GVW, Also Can Be Converted For Gooseneck or Dump

Call For Details



1981 GMC Brig.,
 6-71 D D, 9 Spd., P/S, A/B, 35,000 GVW 22' C&C, Double Framed, New Insp., Clean

Only \$7,000

1986 IHC 1954
 DT466, 5 & 2 Spd., P/S, A/B, 33,200 GVW, 16' Thistle Steel & Alum. Grain Body, New Paint & Insp. Very Clean Only 156,000 Mi

\$16,900

(10) 28'-40'-45' Storage Trailer

Call Ray Leed 717-560-4901

BOWERS USED CARS INC.

Route 30 West of Abbottstown, PA

7015 York Rd. 717-624-7072



89 CHEV EXT C-30 DUALY SILVERADO
 Auto PS Loaded 63 000 Miles
\$14,900



78 CHEV C-65 ROLL-BACK
 20 Jerr Dan New Detroit Diesel 5+2 GVW 27,500
 Was \$11,500 NOW **\$9,500**



89 FORD F350 BUCKET TRUCK
 85 000 Miles Nice Condition
\$8,995



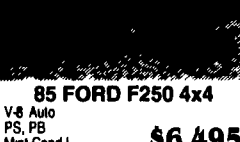
89 FORD F350 12' STAKE TRUCK
 460 4 Speed PS PB 65 000 Miles
\$10,900



85 FORD F250 4x4
 V-8 Auto PS, PB Mint Cond.
\$6,495



84 CHEV. 1 TON w/UTILITY BED
 350 V-8, Dually Wheel 4 Speed PS PB
\$4,500



88 CHEV. 2500 4x4
 V-8 Auto PS & AC Power Angle Snow Plow
\$10,900



89 CHEV 1/2 SURBAN 4x4
 Diesel Loaded
\$10,900

INTERSTATE TRAILER SALES

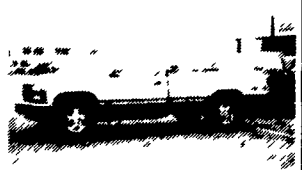
JONES
 PONTIAC • HONDA • GMC TRUCK
 1335 Manheim Pike, Lancaster

LANCASTER'S LARGEST Truck Dealer & We're Getting Bigger!

Prices based on straight sale, Tax & Tags extra. Trades accepted at actual cash value. Must present this ad at time of purchase for sale price.

717-394-0711

JONES BEST BUY USED TRUCKS



'92 GMC K15 4x4
 AT, AC, 350, SLE
 #6243 Was \$17,995
SALE \$15,980



'90 CHEV 454 SS
 AT, AC, V8 Silverado
 #6331 Was \$13,300
SALE \$10,900



'91 CHEV S10 BLAZER 4x4
 Tahoe, V6, AT, AC
 #6239 Was \$15,995
SALE \$13,700



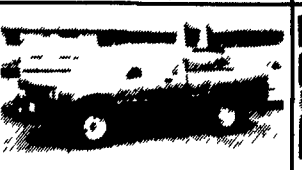
'94 GMC XCAB 4x4
 AT, AC, V8, SLE
 #6269 Was \$23,100
SALE \$21,400



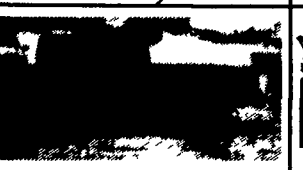
'91 GMC SONOMA 4x4
 AT, AC, V6, SLE
 #6323 Was \$10,995
SALE \$9,375



'95 GMC CUBE VAN
 14', AT, V8, AC, White,
 #6348 Was \$20,900
SALE \$18,800



'91 MITSUBISHI 4x4
 V6, 5 Spd., AC
 #6263 Was \$11,995
SALE \$9,750



'89 CHEV S10 4X4
 V6, AT, AC, Tahoe, White
 #6347 Was \$7,995
SALE \$5,900



'95 GMC SUBURBAN 4X4
 Geneva Conversion, AT, AC, V8, TV, VCR, & More
 #12340 Was \$53,831
SALE \$45,375



'92 CHEV K BLAZER 4X4
 GT, AT, AC, V8, Silverado
 #6283 Was \$21,995
SALE \$19,300