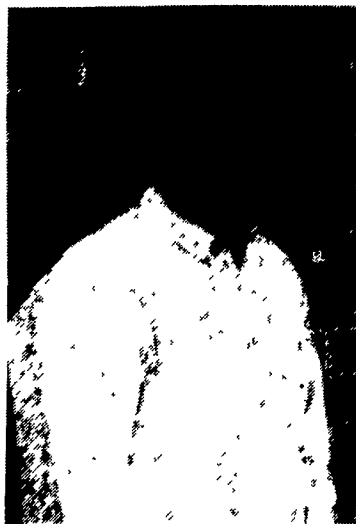


CVC Adds Consultant

SHIPPENSBURG (Cumberland Co.) — Cumberland Valley Cooperative has announced the addition of Michael L. Cook of Mercersburg to its staff.

Cook is joining Cumberland Valley Co-op as a farm consultant and will be working in the Franklin County area. He has been in the agriculture field for several years and brings a broad base of experience with him to Cumberland Valley Co-op.

Cook started his agriculture experience by working on a dairy farm as well as the last three years in a swine production facility. He also has a beef feedlot where he raises cattle.



Michael L. Cook

IndyCar Driver To Promote Equipment

WEST BEND, Wis. — It isn't often that star athletes ask companies for the opportunity to become a spokesperson. It's usually the other way around.

But that's exactly how IndyCar star Scott Pruett has become the national spokesman for Gehl Company, a manufacturer of construction and agricultural equipment.

Gehl Company started using IndyCar racing to promote their products seven years ago when they became the "Official Construction Equipment Company" for Elkhart Lake's Road America and The Toyota Grand Prix of Long Beach, Calif. It was a similar situation then when the two tracks contacted Gehl offering to trade official status, advertising opportunities and tickets and hospitality for use of Gehl Dynalift rough-terrain forklifts and skid loaders.

According to Jim Barnes, national sales manager for Gehl's Construction Division, "Scott called us last spring after he had been testing his IndyCar at Road America. He's building a new house in California and doing a lot of the excavating and landscaping work himself. He had seen some



Winning IndyCar driver Scott Pruett poses in front of a new Gehl skid loader in front of the home he is building outside of San Francisco, Calif. Pruett will be the new spokesman for Gehl equipment in 1996.

of our equipment at work there and decided that he'd really like to have one of our skid loaders to help him with some of the work in building his new house in California. We chatted and the result is that Scott Pruett has a new Gehl skid loader and Gehl Company has a new spokesman."

Pruett, who drives for the Patrick Racing Team, finished seventh in year end points and won the first IndyCar race of his career at the Michigan 500 this year.

Drill Shows Many Improvements

MOLINE, Ill. — John Deere engineers have taken the notion "bigger and better" and applied it to seeding equipment.

The result is the new 1520 Integral Drill that holds up to 67 percent more seed than previous models, while offering improved seed-placement accuracy and consistency.

Replacing the 515 and 520 Series, the 1520 Integral Drill is available in both 15- and 20-foot seeding widths. The grain boxes hold 42 and 40 bushels, respectively, which means fewer stops to refill and more time for seeding.

The double-disk furrow openers feature a quarter-inch offset for better penetration in hard soils and moderate residue. A choice of 6, 7½, and 10-inch opener spacing is available.

With a turn of the knob on the optional active hydraulic down-pressure system, the operator can set down-pressure across the drill

for consistent opener penetration in varying field conditions and residue levels.

A depth-gauging press wheel on each opener ensures accurate seed depth and proper seed-to-soil contact for uniform emergence.



The John Deere 1520 Integral Drill is available in 15- and 20-foot seeding widths. It features large grain boxes for fewer stops to refill, active down-pressure hydraulics for consistent opener penetration in changing field conditions, and depth-gauging press wheels to further ensure consistent seeding depth.

Case Introduces Soybean Drill

RACINE, Wis. — A larger version of the popular 5400 mounted Soybean Special, the new Case IH 5500 Soybean Special, is a 30-foot, trailing, two-section, front-fold grain drill.

Like the 5400, the 5500 provides many of the advantages of a planter for a price that's competitive with grain drills and more efficient.

According to Kurt Schenck, Case Corporation product manager-implements, the 5500 prepares the ground for seed much the same way Case IH Early Riser® planters do, but uses a grain-drill feed cup metering system.

"The 5500 accommodates the narrower row spacing customers



The new Case IH 5500 Soybean Special is a 30-foot, trailing, two-section, front-fold grain drill. The 5500 prepares the ground for seed much the same way Case IH Early Riser® planters do, but uses a grain-drill feed cup metering system.

have been asking for," said Schenck. The unit has 24 openers, staggered for 15-inch row spacing, with one 20-inch center skip between drills. It's also available with 7.5-inch spacing.

The working width without markers is 30 feet 5 inches. The 5500 Soybean Special folds to a transport width of 17 feet 1 inch, conveniently done from the tractor.

Schenck noted that a key consideration in the development of the Soybean Special drills has been the need for equipment that can handle high-residue conditions. The staggered arrangement of the row units provides more clearance for surface residue to pass through the unit.

Improved Corn Lineup Highlights Seed Releases

LINCOLN, Neb. — An improved lineup of early and mid-season corn hybrids highlights the 1996 new NC+ Hybrids product releases.

NC+ will add 10 new corn hybrids for 1996. Half of the new corn releases are under 100 days in maturity.

New corn releases include:

- NC+ 1005: An 86-day hybrid with outstanding yield potential and excellent drydown. Reaches black layer early and has excellent standability. It is adapted to northern and western areas of the Corn Belt with good potential to move south.

- NC+ 1222: A 91-day hybrid with good yield potential for its maturity. Produces high test-weight grain and has very good early growth. Its primary area of adaptation is the Northern and Western Corn Belt.

- NC+ 1366: A 93-day hybrid that produces high quality grain with excellent test weight and good food corn potential. High yields for maturity and rapid drydown. It is adapted for Colorado, Wyoming, western Nebraska, South Dakota and Minnesota.

- NC+ 1585: A 94-day hybrid that dominates yields in its maturity. Excellent drydown and a highly flexible ear for superb performance when planted at medium densities. It has very widespread adaptations from east to west across the Corn Belt.

- NC+ 2075: A 99-day hybrid with very good yield potential and consistent and reliable performance. Good standability, semi-flex ear and very good test weight. Its primary area of adaptation is the Northern and Western Corn Belt.

- NC+ 3711: A 106-day hybrid with high test-weight grain and excellent yields across the Northern and Western Corn Belt. Food-grade quality grain on a white cob and very good standability.

- NC+ 4044: A 107-day hybrid with excellent yields and superb drydown. Responds well to high populations and has improved standability over NC+ 4275. It is adapted to all areas of the Central Corn Belt with good potential to move south.

- NC+ 4919: A 110-day hybrid with superb yield potential and very good fall integrity. Excellent eye appeal with girthy ear and lower ear placement. It has a wide area of adaptation with good southern mobility.

- NC+ 5252: A 111-day hybrid with very good early vigor and good stay green and drydown. Produces tall plant with medium-high ears and very good test

weight. Adapted to California and the Eastern Corn Belt.

- NC+ 5445: A 113-day hybrid with excellent yield potential and good tolerance to most foliar disease. Good potential to move south of its main area of adaptation, which includes the entire Central Corn Belt.

New soybean releases include:

- NC+ 2A15: Early Group II. Good brown stem rot resistance and excellent tolerance to iron chlorosis. Outstanding yield performer with excellent adaptations to narrow rows.

- NC+ 2A22: Early Group II. An excellent performer in variable soils. Very good iron chlorosis tolerance and ideal for use in row seeding.

- NC+ 2A85: Late Group II. A top yield performer with exceptional yield for its maturity. Very good standability and excellent drought tolerance.

- NC+ 3A27STS: Early Group III. Tolerant to SU herbicides with very good emergence. Adapts to any row width and has good phytophthora tolerance.

- NC+ 3A30: Early Group III. Good standability and early emergence. BSR and SCN resistance and good sclerotinia tolerance.

- NC+ 5A44: Mid Group V. Good emergence, good standability and SCN resistance. Moderately resistant to stem canker and frog eye leaf spot.

Encapsulated Formulation To Be Widely Available

WILMINGTON, Del. — TopNotch preemerge corn herbicide, a microencapsulated formulation of acetochlor plus a crop safener, will be widely available to most Northeast growers in 1996.

According to Dr. William Curran, extension weed scientist at Penn State University, TopNotch performed better than several non-encapsulated herbicide treatments in 1995 no-till corn trials. TopNotch also showed as much as 40 percent greater activity on triazine-resistant lambsquarters compared to some other preemerge grass herbicides.

TopNotch was registered for use by the EPA in 1995 in all northeastern states except New York and Massachusetts. It contains the same active ingredient and crop safener found in Surpass EC and Surpass 100.

According to Mark Whalen, product sales lead for Zeneca's Northeast district, TopNotch was designed to provide the most consistent control of annual grasses in no-till corn, including foxtails, fall panicum, barnyardgrass and crabgrass. It also performs exceptionally well in reduced tillage and conventional tillage, as well as on highly organic soils.

Tillage Tool Available With 15-Inch Shank Spacing

BRILLION, Wis. — The versatile Brillion Landcommander™ tillage tool is available with 15-inch shank spacing, in addition to the 24- and 30-inch spacings already available.

"The new 15-inch spacing option makes the Landcommander even more versatile," said Michael Irish, Brillion's general sales manager. "It gives farmers another option, by providing total ground breakout, even in heavy soils."

The Landcommander is the most versatile conservation tillage system available, Irish said, and can be used in the fall or spring. When followed with a Brillion field cultivator and pulverizer, this

combination will help producers meet their conservation tillage needs.

Front disc gangs cut through heavy residue while working the ground to a depth of 6 inches. The working depth is easily adjustable, and so is the disc cutting angle, to help make residue management more effective.

Auto-reset shanks follow the front disc gangs and work the ground eight to 20 inches deep, breaking up hard pan and improving water holding capacity and root growth. The shanks feature a unique, parabolic design that pulls easier and stays in the ground better, providing maximum soil lift and shatter.