

Middleburg Livestock

MIDDLEBURG, PA
DECEMBER 12, 1995

CATTLE 368... PDA ...Compared with last week's sale...steers uneven, mostly STEERS: few High Choice and Prime 1175/1420 lbs. 67.00-69.00, Choice 1050/1485 lbs. 62.50-67.75, few down to 61.00, Select 55.50-60.00, few Standard 43.00-48.50.

HOLSTEINS: few High Choice and Prime 1290/1400 lbs. 62.50-64.00, Choice 1200/1485 lbs. 57.50-61.25, Select 50.00-56.00, few Standard 45.00-48.50.

HEIFERS: one Prime 1465 lbs. 67.00, Choice 1035/1270 lbs. 58.00-67.00, few Select 50.25-55.25.

COWS: Breaking Utility and Commercial 34.00-37.00, few 41.00, Cutter and Boning Utility 32.00-36.25, Canner and Low Cutter 27.75-31.50. Shells down to 21.00.

BULLOCKS: few Choice 1235/1300 lbs. 54.75-57.75.

BULLS: few Yield-Grade No. 1 1105/1825 lbs. 36.25-43.50, few No. 2 1015/1430 lbs. 30.00-34.75.

FEEDER CATTLE: STEERS: Medium Frame No. 1 410/630 lbs. 42.00-46.00, few Large Frame No. 2 600/1000 lbs. 29.00-31.00; HEIFERS: few Medium Frame No. 1 475/630 lbs. 29.50-39.00;

BULLS: few Medium Frame No. 1 500/550 lbs. 32.00-44.00.

CALVES 167...VEALERS: Standard and Good 80/105 lbs. 32.00-36.00, Utility 55/85 lbs. 17.00-30.00.

FARM CALVES: No. 1 Holstein bulls 90/125 lbs. 85.00-118.00, one 123.00, No. 2 85/110 lbs. 40.00-75.00; No. 1 Holstein heifers 85/115 lbs. 75.00-125.00.

HOGS 354...(12/11 & 12/95)...Bulk of supply sold on Monday and reported by the auction. Barrows and gilts 2.00 to 3.00 higher, sows steady.

BARROWS AND GILTS: US 1-2 230/260 lbs. 44.50-46.00, US 1-3 220/265 lbs. 42.50-45.00, US 2-3 210/265 lbs. 41.50-44.25.

SOWS: US 1-3 385/485 lbs. 30.00-33.00, 485/585 lbs. 31.00-33.50.

BOARS: all weights 26.00-27.00.

FEEDER PIGS 142...US 1-3 25/40 lbs. 25.00-30.00, lot 20 lbs. 21.00. --- per head.

SHEEP 55...SLAUGHTER LAMBS: Choice 55/85 lbs. 70.00-87.00, 30/50 lbs. 115.00-130.00.

SLAUGHTER SHEEP: 14.00-20.00.

GOATS 5...Few Large 54.00-84.00, two Small Kids 36.00. --- per head.

Westminster Livestock

Hagerstown, Md.
December 12, 1995

Report supplied by auction

SLAUGHTER COWS: 152 HEAD, 1.00 HIGHER. UTILITY 31.00-35.50; HIGH DRESSING 36.00-38.00, 1 AT 40.00; CANNERS 27.00-31.00, FEW TO 32.00; SHELLY 27.00 DOWN.

BULLS: YG#1 1200-1700 LBS. 39.00-41.00, 1 AT 44.00; YG#2 35.00-38.75; 1 LOW DRESSING AT 34.00.

FED STEERS: HIGH CHOICE TO PRIME 1100-1450 LBS. 66.00-68.50; CHOICE 62.00-66.00; SELECT 57.00-62.00; LOW CHOICE/HOLSTEINS 54.50-58.00.

FED HEIFERS: FEW HIGH CHOICE 1100-1300 LBS. 67.25; FEW 900-1000 LBS. 60.00-61.75; SELECT HOLSTEINS TO 45.25.

VEAL CALVES: 136 HEAD. CHOICE 1 265 LB. AT 67.00; 1 350 LB. AT 56.00; CULLS 85-110 LBS. 29.00-33.00, FEW TO 37.00; 50-80 LBS. 19.00-28.00.

FARM CALVES: HOLSTEIN BULLS #1 95-120 LBS. 80.00-104.00; 90 LBS. 60.00-85.00; #2 80-95 LBS. 35.00-50.00; HOLSTEIN HEIFERS FEW 90-120 LBS. TO 120.00; 1 85 LB. TO 60.00; BEEF X BULLS 35.00-60.00.

BUTCHER HOGS: 100 HEAD, 1.50 HIGHER. US#1&3 225-260 LBS. 42.50-43.50; 265-300 LBS. 40.00-42.50; #2&3 270-300 LBS. 33.00-38.00.

STOCK CATTLE: 130 HEAD. STEERS MEDIUM AND LARGE FRAME 200-40 LBS., NONE; 400-600 LBS. FEW 53.00-59.00; 600-800 LBS. 50.00-58.50.

HEIFERS: 300-500 LBS. 38.00-44.00, FEW TO 47.00; 500-700 LBS. 35.00-42.00; 700-800 LBS. 36.00-42.50.

BULLS: 200-400 LBS. FEW TO 54.00; 400-600 LBS. 48.00-56.50; 600-700 LBS. 40.00-46.00; 2 840 LB. AT 43.50.

LAMBS: 20 HEAD. CHOICE 90-115 LBS. 72.00-76.00; 40-75 LBS. 84.00-96.00; MEDIUM 75.00-80.00; FEW CHOICE 120-130 LBS. 63.00-68.00; 150-180 LBS. 51.00-58.00.

SHEEP: 35 HEAD 30.00-46.00, STRONG DEMAND. 6 HEAD 49.00-60.00.

GOATS: 53 HEAD. LARGE 75.00-95.00; 2 AT 115.00 AND 138.00; MEDIUM 35.00-70.00; SMALL 15.00-30.00.

PIGS AND SHOATS: FEW OFFERED.

BY THE HEAD, 8 HEAD 32 LBS. AT 20.00; 4 HEAD 42 LBS. AT 23.00.

STOCK BOAR: 250 LBS. AT 35.00. SOWS: 15 HEAD, 3.00 HIGHER. 400-500 LBS. 31.00-35.00; 500-700 LBS. 34.00-35.50.

BOARS: 6 HEAD. 400-600 LBS. 24.00-26.00.

Leesport Livestock

LEESPORT, PA
DECEMBER 13, 1995

CATTLE 243... PDA .. Supply included 90 sl. steers & heifers & 15 feeder cattle ..Compared with last week's sale...Holstein steers .75 to 1.50 lower, cows steady, spots 1.50 higher, heifers steady to strong.

STEERS: few Choice 1140/1420 lbs. 64.25-66.25, few Select 55.00-63.00, few Standard 41.75-42.00.

HOLSTEINS: one High Choice and Prime 1470 lbs. 61.00, Choice 1150/1690 lbs. 55.00-59.25, Select 48.00-55.25.

HEIFERS: Choice 990/1285 lbs. 60.00-64.50, Select 51.75-57.50, one 59.75, few Standard 47.00-53.50, few Choice Holstein heifers 55.00-57.25.

COWS: Breaking Utility and Commercial 32.75-36.50, few 38.75, one 41.00, Cutter and Boning Utility 30.00-35.00 mostly 31.00-33.50, Canner and Low Cutter 29.50-32.75. She's down to 22.00.

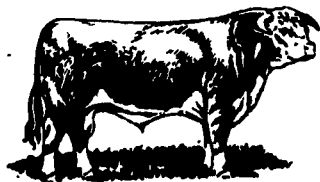
BULLS: Yield Grade No. 1 905/1805 lbs. 38.50-42.50, few No. 2 915/1120 lbs. 35.00-37.75.

FEEDER CATTLE: STEERS: few Large Frame No. 1 950/1085 lbs. 53.50-57.00, Medium Frame No. 1 460/955 lbs. 41.50-58.50, few Large Frame No. 2 460/500 lbs. 41.00; HEIFERS: Medium Frame No. 1 365/745 lbs. 38.00-43.00.

CALVES 178...Holstein bulls mostly steady, heifers steady to strong.

VEALERS: one Good 42.00, Standard and Good 80/120 lbs. 30.00-35.00, Utility 65/90 lbs. 12.00-27.50.

FARM CALVES: No. 1 Holstein bulls



90/120 lbs. 90.00-110.00, few 80.00, No. 2 80/120 lbs. 37.50-85.00 mostly 50.00-75.00; No. 1 Holstein heifers 80/120 lbs. 100.00-150.00, No. 2 75/90 lbs. 35.00-83.00. Few beef cross bulls and heifers 75/95 lbs. 40.00-60.00.

HOGS 140...Barrows and gilts 3.00 to 4.50 higher, sows 1.00 to 3.00 higher.

BARROWS AND GILTS: US 1-2 230/260 lbs. 45.10-47.50, US 1-3 225/280 lbs. 44.25-45.50, US 2-3 275/330 lbs. 35.00-43.00.

SOWS: US 1-3 335/590 lbs. 30.00-34.00, few Medium 315/430 lbs. 25.00-27.00.

BOARS: few 185/795 lbs. 24.00-28.50. FEEDER PIGS 146...US 1-3 20/30 lbs. 140.00-155.00, 30/40 lbs. 92.50-127.50, 45/70 lbs. 70.00-87.50. --- per head.

SHEEP 103...SLAUGHTER LAMBS: Choice 60/80 lbs. 75.00-82.50.

FEEDER LAMBS: Good and Choice 30/65 lbs. 65.00-80.00, few 90.00.

NEW CROP LAMBS: Choice 35/55 lbs. 140.00-185.00, one 200.00, 55/75 lbs. 92.50-120.00, few 85.00.

SLAUGHTER SHEEP: 20.00-39.00.

GOATS 33...Few Large 99.00-121.00, Medium 57.50-79.00, few Small 20.00-37.50, Large Kids 40.00-65.00, Small Kids 25.00-37.50. --- per head.

Morrison Cove Livestock

Martinsburg, Pa.
December 11, 1995

Report supplied by auction

CATTLE 117. STEERS CHOICE 64.00-68.00; GOOD 58.50-63.50.

HEIFERS: CHOICE 62.50-67.00; GOOD 57.50-62.00.

COWS: UTILITY & COMMERCIAL 31.00-37.00; CANNER & LOW CUTTER 22.00-32.00.

BULLOCKS: 48.00-55.00.

BULLS: YIELD GRADE NO. 1 38.00-49.00.

DISTRIBUTORS FOR: SILO QUEEN

• 2339
• 2390
• 2090 - 97 Day
• 502 - 109 Day
• 2400 - 110 Day
• 2525 - 117 Day
• 2518

SOYBEANS
Boydell Farms #363
#3500 (2nd Place BACS Trials)
Agri & North Coast
8836 354.284
9139 The All New 374
9329 9434
STINE -3090 E
Also Avail. Resnick, Pella & Williams

ALFALFA 84 Vwrap. Vernel Wetfoot 84 MPR	OATS Armor Noble Hercules Ogle Newdak
---	---

TIMOTHY & CLIMAX TIMOTHY

Best Discounts On Corn, Soybeans & Alfalfa Seed
ORDER NOW

Baler Twine and Fertilizer, Chemicals and Full Line of Ag Seeds Available

WHOLESALE & RETAIL
BOYDELL FARMS
302 Iona Road, Lebanon, PA 17042
Phone 717-272-8943

The Antiseptic, All Purpose Ointment For Animals.
BAG BALM Ointment
Used for over 90 years on cattle, horses, other domestic animals.

For CATTLE: helps in fast healing of small injuries, rash, chapping; massage of caked bag.

For HORSES: helps in fast healing of cracked heels, cuts, galls, hobble burns. A great sweat. Stays on!

At tack shops, farm, drug, hardware stores. If unavailable in your area, order direct 4 1/2 lb. par \$34.50; 10 oz. can \$5.15; 1 oz. can \$3.50

BAG BALM Dilators
Helps in fast healing of bruised, sore or injured teats. Packed in antiseptic BAG BALM ointment, these dilators are super flexible. They help keep the teat canal open for easier milking. If unavailable in your area, order direct. Can of 40 dilators, \$5.15

Add \$2.00 handling for your order. Prices subject to change without notice.

To order, send check or money order to:

DAIRY ASSOCIATION CO., INC.
P.O. Box 145, Dept. LF125
Lyndonville, VT 05851
West of Rockies:
Smith Sales Service
16372 S. W. 72nd St., Portland, OR 97223

Are you utilizing this line to your advantage?

A Telmark True Tax Lease on year-end purchases may reduce your income tax liability this year.

SCHEDULE C (Form 1040)		Profit or Loss From Business		OMB	
Department of the Treasury		(Sole Proprietorship)			
SCHEDULE F		Profit or Loss From Farming		OMB	
Internal Revenue Service		(Sole Proprietorship)			
Name of proprietor		Attach to Form 1040, Form 1041, or Form 1085			
A	2	Rent or lease (see page F-4):			
C		a Vehicles, machinery, and equipment	26a		
		b Other (land, animals, etc.)	26b		
	27	Repairs and maintenance	27		

- 100% tax deductible payments, guaranteed
- assets purchased earlier this year may be leased
- customized fixed payment schedules
- equipment, building & vehicle leases

TELMARK INC.
800-451-3322

Personalized service from local Telmark representatives:

- | | | | | |
|---|---------------------------------------|---------------------------------------|---|--|
| Ken Darlington
(717) 733-3532 | Lisa Sonnen
(717) 866-9217 | Patrick Rush
(412) 587-3989 | Jody Underwood
(301) 898-0095 | Mike Fullam
(717) 966-9202 |
| Mike Dixon
(814) 684-5707 | Paul Shipper
(302) 456-1931 | Fred Dixon
(412) 346-3455 | Frank Hunter
(716) 595-3954 | Andrew McLean
(410) 827-5052 |