

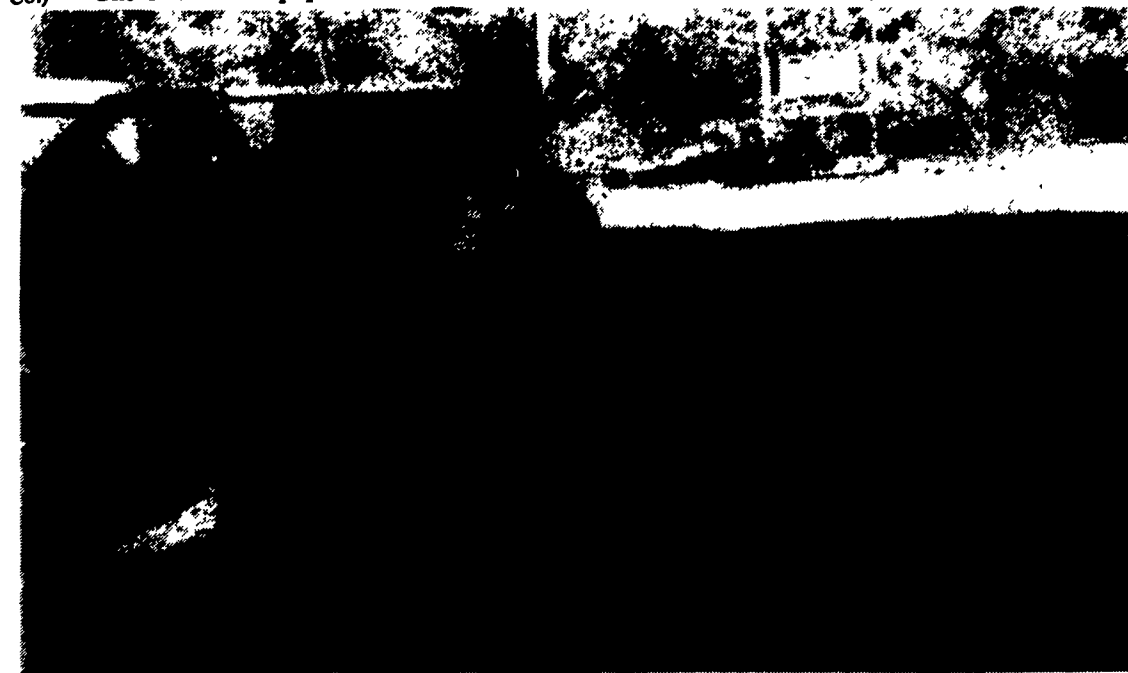
Dog Law Bureau Chief: We Will Help You

VERNON ACHENBACH JR.
Lancaster Farming Staff
HARRISBURG (Dauphin
Co.) — One of the most popular

Christmas gifts in American cul-
ture has been the puppy.
Every year the practice of giving
puppies as a Christmas gift con-

tinues, especially in younger fami-
lies attempting to maintain the
things that have made Christmas-

(Turn to Page A40)



This agent of the state Department of Agriculture Bureau of Dog Law rubs the underneck of this apparent Golden Retriever and gets some attention from what appears to be a chocolate Labrador Retriever. The two dogs were running loose in an area. The image of a dog catcher is not the reality of the job. The job involves more expertise in dog kennel management practices and dog-care and control by owners.

Advertising/News Deadlines

(Continued from Page A1)

December 23, 30, and January 6 issues. Many of these dead-
lines are the week prior to the week of publication.

The deadlines are as follows:

December 23rd Issue

Public Sale Ads — Noon, Monday 12/18.

All Other Deadlines On Normal Schedule.

December 30th Issue

Office Closed Christmas — Monday, 1/25.

Public Sale Ads — 5 p.m., Friday, 12/22

Mailbox Markets — 5 p.m., Friday, 12/22.

General News — Noon, Thursday, 12/28.

Classified Section C Ads — 5 p.m. Wednesday, 12/27.

All Other Classifieds — 9 a.m., Thursday, 12/28.

January 6, 1996 Farm Show Issue

Office Closed New Year's Day — Monday, 1/1.

Public Sale Ads — 4 p.m., Friday, 12/22.

Mailbox Markets — 5 p.m., Friday, 12/22.

General News — Noon, Wednesday, 1/3.

Classified Section C Ads — 5 p.m., Tuesday, 1/2.

All Other Classifieds — 9 a.m., Wednesday, 1/3.

Starling Named

(Continued from Page 1)

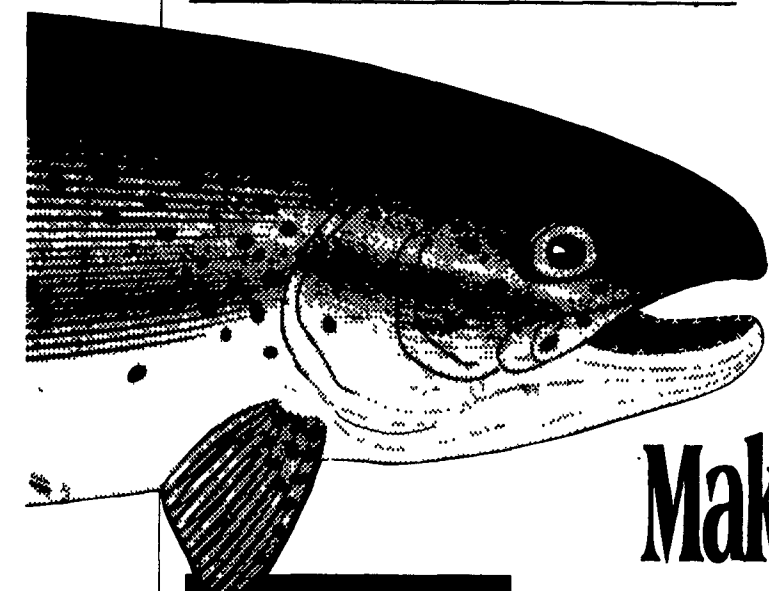
applied statistics courses.

Starling came to Penn State as a
graduate assistant in 1954 and

joined the agronomy faculty in
1957. A Virginia native, he
received his bachelor's degree in
agronomy from Virginia
Polytechnic Institute and State
University. He earned his master's
and Ph.D. degrees in agronomy
from Penn State.

Starling has served as president
of the Pennsylvania Grassland
Council, the Pennsylvania Plant
Food and Protectant Educational
Society, and the Northeast Branch
of the American Society of
Agronomy.

Pennsylvania Streams and Lakes



**LOST
STREAM MAP
FOUND AND
RESTORED**

THE STREAM MAP
OF PENNSYLVANIA was completed
in 1965 after a thirty-year effort by
Howard Higbee, a former Penn State
Professor.

The map is also known as the
LOST STREAM MAP to some an-
glers.

Professor Higbee succeeded in
creating a map of the highest detail
possible...a map that shows every
stream and lake. He painstakingly
plotted by hand, the location of
45,000 miles of streams onto a 3 x
5 foot map.

The map sold extremely well --
until it was lost several years later.
Incredibly, the printer entrusted with
the original drawing and printing
plates, declared bankruptcy, then
carelessly hauled Higbee's 30 years
of work to the landfill.

The few remaining dog-eared
copies became a prized fisherman's
possession. Professor Higbee was
offered \$400 for one of his last
maps. And state agencies were
forced to keep their copies under
lock and key.

The experts had always told
Professor Higbee that reprints were
impossible, because the maps were
printed in non-photographic blue.

Then, in 1991, at the age of 91,
Howard Higbee's dream came true.
Computers made it possible to
reprint the map. Holding an updated
map, Howard said, "I never thought
I'd live to see this day."

Stream Maps Make Great Gifts



Why every fisherman needs this map

It is estimated that 10% of all the fishermen catch 90% of the fish.
Regardless of which group you fall into... there's a sure way to up your
odds... simply try new fishing waters. Fish where few fishermen ever
fish.

Pennsylvania is loaded with great fishing waters...many of them
overlooked. From the Lake Erie tributaries to the Delaware
River...thousands of miles of streams, lakes and rivers are now easy-to-
locate on one map.

Professor Higbee's Stream Map of Pennsylvania is the first and
only highly detailed map of its kind. This 3 foot by 5 foot color map
shows virtually all of the 45,000 miles of Pennsylvania streams & lakes.

RAVE REVIEWS

"It an anglers dream, a
masterpiece, a map that
contains streams you won't
find on other maps. The pos-
sibilities for exploring new
waters are endless."
—George Smith
THE TIMES LEADER-Wilkes-Barre

"If you're looking for the
most definitive maps ever
created depicting every single
creek, river, stream, pond and
lake...then "Professor Hig-
bee's Stream Maps" are
without question the finest."
—Howard Brant
THE NEWARK STAR-LEDGER

"It is in showing where to
find out-of-the-way trout
streams that makes the map
such a treasure to the fisher-
man." —Joe Gordon, TRIBUNE-
DEMOCRAT-Johnstown, PA

FREE LOCATION BOOKLET

Included with each map. Pinpoint the best fishing in Pennsylvania
with this valuable guide. Easily locate over 900 productive trout
streams and 300 lakes. Bass waters, class "A" limestone
streams, and trophy fish waters are easy to locate on the map.

ORDER YOUR COLOR STREAM MAPS

Available rolled or folded. ALSO AVAILABLE in heavy gauge LIFE-
TIME GUARANTEED, glass-like clear-lamination, write-on wipe-off
surface, with brass eyelettes for easy hanging, (rolled only)

Send me 3 foot by 5 foot ROLLED map(s) postage paid, \$23 45 ea

Send me 3 foot by 5 foot FOLDED map(s) postage paid, \$23 45 ea

Send me 3 foot by 5 foot LAMINATED map(s) postage paid, \$43 45 ea

Check or money order enclosed \$ PRIORITY SHIPPING INCLUDED

Orders Received By Tues., Dec. 19 Will Be Shipped
In Time For Christmas!

Name _____

Address _____

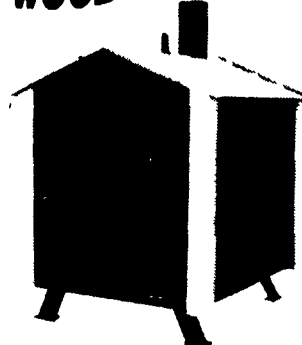
City _____ State _____ Zip _____

Mail Your Order And Check Or Money Order Payable To:

LANCASTER FARMING

Dept. SM
1 East Main St.
Ephrata, PA 17522

the
WOOD MASTER



Hot Water Outdoor Wood Furnace

Hot air/Hot water/Domestic water
CHUCKWOOD SALES AND SERVICE
WOODMASTER DEALER
ROXBURY, PA
(717) 532-5820

**MARTIN
MACHINERY**



GENERATORS

Sales ★ Service ★ Rentals
★ Complete Generator Systems
★ PTO ★ Portables ★ 2-1600 KW
"We Service It If You Have It
And Sell It If You Need It"

34 W. Mohler Church Rd.
Ephrata, PA 17522

Tel: 717-738-0300
Fax: 717-738-4329