

Holstein Announces Convention Plans

WILLIAMSPORT (Lycoming Co.) — During the Pa. Holstein Convention, the Ladies Committee has planned a special event for ladies on Friday, February 23. The ladies will travel from Williamsport, the site of the 1996 convention, to Lewisburg to visit and tour the Country Cupboard Restaurant and Gift Shop. A popular tourist site for the Central Susquehanna Valley, the County Cupboard features a dining area, greenhouse, and a variety of shops

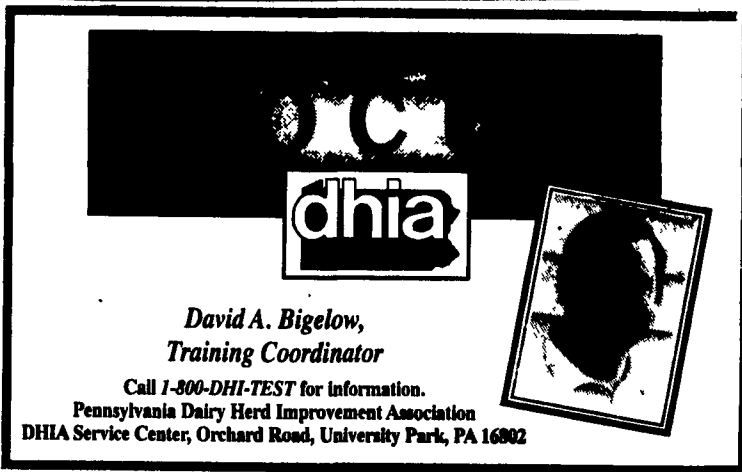
with crafts and craft supplies. Four participants will have to opportunity to watch demonstrations by artisans on making cornhusk dolls, basket weaving, jewelry care, herb arrangements and other crafts. A buffet luncheon will be included in the day's activities with free time for shopping. For more information, call Diane Stackhouse, chairman of the Ladies Program at (717) 584-2013.

Average Farm Feed Costs For Handy Reference

To help farmers across the state to have handy reference of commodity input costs in their feeding operations for DHIA record sheets or to develop livestock feed cost data, here's last week's average costs of various ingredients as compiled from regional reports across the state of Pennsylvania. Remember these are averages so you will need to adjust your figures up or down according to your location and the quality of your crop.

Corn, No. 2y - 3.33 bu. 5.95 cwt.
Wheat, No. 2 - 4.59 bu. 7.67 cwt.
Barley, No. 3 - 2.30 bu. 4.91 cwt.
Oats, No. 2 - 1.82 bu. 5.66 cwt.
Soybeans, No. 1 - 6.56 bu. 10.96 cwt.
Ear Corn 82.02 ton 4.10 cwt.
Alfalfa Hay - 104.75 ton 5.24 cwt.
Mixed Hay - 100.5 ton 5.03 cwt.
Timothy Hay - 103.75 ton 5.19 cwt.

The times that we now live in are challenging, and changing fast in the dairy industry. Does the message of the Christ child apply today? I believe more than ever. Let's dare to be different and make Christmas last all year.



dhia

David A. Bigelow,
Training Coordinator

Call 1-800-DHI-TEST for information.
Pennsylvania Dairy Herd Improvement Association
DHIA Service Center, Orchard Road, University Park, PA 16802

DAVE SLUSSER
General Manager
STATE COLLEGE (Centre Co.) — The board and the employees of Pa. DHIA would like to extend the best to you, our members and to all involved in the dairy industry this Christmas season.

As we manage our farms and cooperatives in these times, we must not forget the Christmas spirit and Christian message of December 25th. The birth of the Christ child marked a new beginning for mankind in his relationship with God.

You might have heard the question, "Can modern agriculture operate on the principles set down by the life's work of the Christ child?" To explore this question, let's look at just a few principles of his teachings, and relate them to farm and cooperative management.

Forgive — We are told we must forgive others or we will not be forgiven. As this modern world moves forward, it seems that people forgive less. It is so easy to see the faults in others and not be able to see them in ourselves. Business management as well as all of life is more fun when you operate in a forgiving spirit.

Love others more than yourself — This principle can literally get out of control. When someone knows you care about them more than you do yourself, they return the favor. The higher position that you hold, and the more responsibility that you have, the more of a servant you are. Without love you have nothing! When necessary, ask for forgiveness.

Truth — Boy, does our world need truth! We need to concentrate on truth, and sometimes truth hurts.

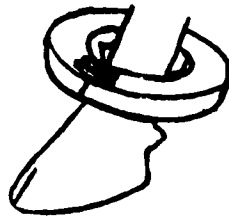
Brother's keeper

This principle is very important in the agricultural community. You see it in full force when a barn burns down, when there is a death in a family, or when many other different tragedies hit a family. The love and concern that you see at these times truly represent the spirit of the Christian message.

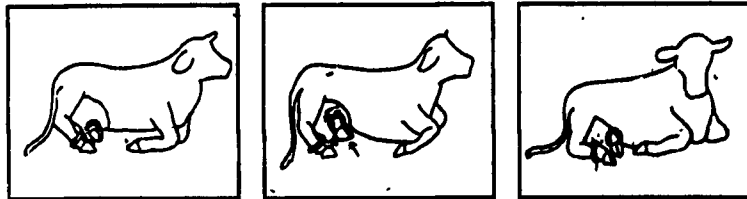
Can this principle go the next step in modern dairy farming? The cooperative principle is based on brothers and sisters working together to accomplish what they cannot do alone. Should we explore new ideas of this principle when it comes to farm and cooperative management, and farm and cooperative structures?

THE END OF TEAT INJURY

"NO SECRETS" The "TEAT SAVER"



pushes the udder & teat away from the dew claw. Apply two weeks prior to freshening.

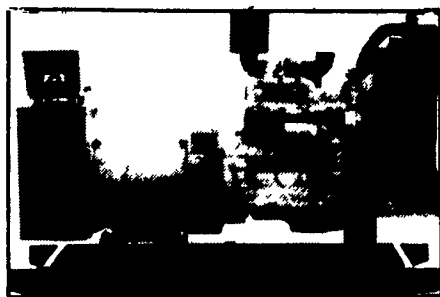


Available Now at...

HUBER'S ANIMAL HEALTH SUPPLIES

810 Tulpehocken Rd., Myerstown, PA 717-866-2246
Mon., Thurs. & Fri. 7:30 a.m. to 8 p.m.;
Tues. & Wed. 7:30 a.m. to 5 p.m.;
Sat. 7:30 a.m. to Noon

GENERATORS



AUTOMATIC and
MANUAL SYSTEMS

DIESEL
L.P. GAS
NAT. GAS
NEW & USED



LEROY SOMER
PTO ALTERNATORS

BRUSHLESS
INDUSTRIAL GRADE
11-to 60 KW

READY FOR THE NEXT STORM?

For Sales and Service Call The People Who Know Generators

MARTIN ELECTRIC PLANTS

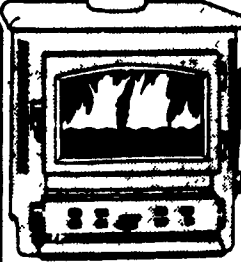
280 Pleasant Valley Rd., Ephrata, PA 17522-8620

Tel: 717-733-7968 Fax: 717-733-1981

For the Selective Buyer...

Stratford Coal Stoves

specifically designed to
burn
Pennsylvania Anthracite
Coal



**DUSSINGER'S
QUALITY STOVES**

2533 OLD PHILA PIKE,
Rt. 340, Smoketown, PA
3 miles East of Lancaster
Tues., Thurs. & Fri. 10-8;
Wed. & Sat/ 10-5

(717) 397-7539



STIHL®

Stihl 017 14"
\$199.95

- Powerful 1.5 HP
- Lightweight 8.6 lbs
- Oil & fuel mix level indicators

Available at these servicing dealers

Alrville
WOODBINE MOWER
& SAW CO.
1266 Woodbine Rd.
717-862-3271

Hummels Wart
HUMMEL'S
TEXACO
Rt. 11 & 18
717-743-7489

Reamstown
EAGLE RENTAL
CENTER
Rt. 272, Reamstown Traffic Light
717-336-3945

Dallastown
TRI-BORO
CONCRETE, INC.
436 Locust St.
717-246-3085
1-800-632-8018

Jonestown
BLUE MOUNTAIN
ENTERPRISES, INC.
Rt. 72 South
717-865-2994

Ronks
A & B SALES
& SERVICE
370 Newport Road
2 Miles South of Rt. 23
Along 772 Thru Monterey

East Earl
GOODS LAWN &
GARDEN CENTER
Route 23
717-354-4026 Ext. 34

Lititz/Lebanon
BOMBERGER'S
LAWN
& GARDEN
Lititz: 717-826-3301
Lebanon: 717-272-4155

Schaefferstown
MARTIN
HARDWARE &
EQUIPMENT CO.
Rt. 501 1 1/2 Miles South of
Schaefferstown, PA
717-848-8917

Elizabethtown
MESSICK FARM
EQUIPMENT, INC.
Rheems Edt. Rt. 283
Elizabethtown, PA
717-357-1319, 717-853-8867

Loyville/Carlisle
GUTSHALL'S INC.
Loyville, PA - Carlisle
717-788-4343 717-249-2313

Shartlesville
MOUNTAIN VIEW
SUPPLY, INC.
(Formerly Shartlesville
Farm Service)
P.O. Box 529
610-488-1025

Ephrata
WES STAUFFER
ENGINES &
EQUIPMENT
23 Pleasant Valley Rd.
717-738-4215

Oxford
ENFIELD EQUIPMENT
6800 Limestone Rd.
610-932-8858

Shippensburg
LEINBACH
FARM EQUIP.
1120 Ritner Hwy.
717-532-5511

Ephrata, Hershey
HOLLINGER'S
LAWN & GARDEN
EQUIP.
Ephrata, Pa. 717-738-1131
717-858-2710
Hershey, Pa. 717-533-4080

Palmyra
HERR'S REPAIR
SHOP
RD 2, Box 115A
717-838-1549

Tamaqua
CHARLES S.
SNYDER, INC.
RD 3
717-386-8845

Gap
GAP POWER
EQUIPMENT
Corner of Rt. 30 & Rt. 887
717-442-8870

Palmyra
WEAVER'S LAWN &
GARDEN
740 W. Main St.
717-838-5999

Whiteford MD
ENFIELD
EQUIPMENT INC.
750 Wheeler School Rd.
301-879-8080

DISTRIBUTED BY KEYSTONE STIHL