



Lancaster Dairy Herd Improvement Assoc.
1592 Old Line Rd. Manheim, PA 17545
(717) 665-5960

Joe Graybeal,
President

Lancaster DHIA's Board of Directors met November 21, 1995 at the lab in Manheim. The first priority was to review and approve our first annual budget as a new service affiliate. Finance committee chairman Dave Garber presented many factors which may influence the upcoming fiscal year. Despite all the changes Lancaster DHIA was experienced in just one fiscal year, the committee confidently projects another positive balance.

The By-Laws Committee reported the new By-Laws are

complete and will be presented to the membership for approval at the annual meeting on December 5. The Board expressed appreciation for the many hours of work by the committee members.

Rodney Denlinger, chairman of the Lab Committee, reviewed lab operations. A Bentley equipment representative recently upgraded programming of the lab computers which increases our line capacity to 500 samples per hour. This increases our efficiency while maintaining excellent accuracy.

The Lab Committee recommended and the Board approved pricing for MUN at \$.15 per cow

if the whole herd is tested; individual samples will be \$.65. A Summary report is now available from DRPC @ Raleigh at no cost to the dairyman. Lancaster DHIA will continue to work with Northeast DHIA while we study the demand for MUN testing. We urge dairymen to consult their nutritionist to help evaluate MUN results.

Lancaster DHIA Technicians are receiving a positive response from dairymen as Jay Mylin reported a continued increase in herds on test. We continue to target herds not on test. Lancaster DHIA, with support from DRPC @ Raleigh, is able to bring valuable management data to these herds at a very reasonable cost.

Lancaster DHIA serves Lancaster and surrounding counties. For information call the office at (717) 665-5960.

Cattle Breeding Cooperatives Reach Agreement

SHAWANO, Wis.—The Board presidents and senior management of Federated Genetics and Cooperative Resources International have agreed to recommend to their respective Boards of Directors approval of a memorandum of intent that would further combine product development, marketing, and the internal operations of the cattle breeding group.

Cooperatives represented in the study include Eastern AI, Ithaca, New York; Atlantic Breeders, Lancaster, Pennsylvania; Louisiana Animal Breeders, Baton Rouge, Louisiana; and the subsidiaries of Cooperative Resources International...Noba, Tiffin, Ohio and 21st Century Genetics, Shawano, Wisconsin.

Federated's Long-Range Planning Committee points out this study is being carried out concurrently with the completion of their own merger plan which is developing between Atlantic, Eastern and Louisiana.

In authorizing the study, leaders of the cooperatives established

two primary objectives: 1. Any change in relationships must maintain a governance structure that allows the principles of cooperative enterprise...farmer ownership and control, member representation and equity distribution...to function; 2. The review will examine current operations and determine if efficiencies and product quality can be enhanced through a closer working relationship.

Based on the most recent audit of each, the five cooperatives have \$47 million in assets, \$73 million in sales and net worth at 76% of the total assets. Last year they served nearly 45,000 active members. Together they own more than 2,000 sires, housed at nine locations.

These cooperatives currently have a product supply agreement that provides for a complete exchange of each other's genetic material throughout the United States. Beef and colored dairy breed genetic development programs are already fully integrated.

Raising Expectations



Forget everything you've heard about compact tractors.

MF 1200 Series tractors and implements perform way beyond their size and price. Precise lawn mowing. Heavy duty weed and brush clearing. Serious gardening. Landscaping. Materials handling. Trenching. Even light field work. These tractors excel at jobs that used to require big, expensive, fuel-thirsty tractors and implements.

Standard features include water-cooled, 3-cylinder, diesel engines, 3-point hitch and high-capacity auxiliary hydraulics; and rear PTO (Mid-PTO is also standard on the 1210, 1220 and 1230.) Chose two or four-wheel drive ag or turf tires, hydrostatic or synchro-shuttle transmission.

MF® Compacts sized to your needs						
Model	1210	1220	1230	1240	1250	1260
Gross engine hp	18.1	21.1	26.0	27	32	37.3

Stop by your local Massey Ferguson® dealer today and see why MF 1200 Series tractors are constantly exceeding their owner's expectations.



Massey Ferguson is a wholly owned subsidiary of AGCO Corporation, Dublin, GA.

SEE YOUR NEAREST DEALER FOR DETAILS

C.J. WONSIDLER
1975 Trumbauerville Rd.
Quakertown, PA 18951
(215) 838-1938
Routes 300 & 100
New Tripoli, PA 18066
(610) 767-7811

D.W. OGG
EQUIPMENT CO.
5149 Cap Stine Rd.
Frederick, MD 21701
(301) 473-4280

ECKROTH BROS.
FARM EQUIPMENT
RD #2, Box 24A
New Ringgold, PA 17960
(717) 843-2131

6, Richville Rd.
Bangor, PA 18018
(610) 588-8822
307 Edgar Ave.
Bloomsburg, PA 17815
(717) 784-5217

HERNLEY'S FARM
EQUIPMENT, INC.
2006 S. Market St.
Elizabethtown, PA
(717) 367-8867

LAWN CARE OF PA
Martindale, PA 17549
(717) 448-4541

LEBANON VALLEY
IMPLEMENT CO.
700 E. Linden St.
Richland, PA 17067
(717) 866-7518

M.M. WEAVER & SON
N. Groffdale Rd.
Leola, PA 17540
(717) 658-2321

MEYERS
IMPLEMENTS, INC.
490 North Antrim Way
Greentown, PA 17228
(717) 897-2178

MID-STATE
EQUIPMENT CO., INC.
1462 River Rd. (Rte. 29)
Titusville, NJ 08590
(609) 737-7400
(609) 782-2244

MILLER
EQUIPMENT CO.
Stauffer Road
Bechtelsville, PA 19505
(610) 845-2911

PEOPLE'S SALES
& SERVICE
Oakland Mills, PA 17076
(717) 463-2735

FRANK RYMON &
SONS, INC.
369 Route 31 South
Washington, NJ 07878
(908) 688-1484

SCHREFFLER
EQUIPMENT
Pittman, PA 17964
(717) 648-1120

S.G. LEWIS
AND SON
West Grove, PA 19390
(610) 869-9440
(610) 869-2214

TEST DRIVE
ONE TODAY!



MASSEY FERGUSON



Your Complete Headquarters For Sprayers And Parts

Raven Tough Polyethylene Tanks

We Also Stock A Complete Line Of:

Teejet
Sprayer Nozzles
And
Accessories

Hyprow
Pumps
And
Accessories

PACER
PUMPS

- Sprayer Hose
- Ball Valves
- Nylon Fittings
- Poly Tanks

PAUL B. ZIMMERMAN, INC.

50 Woodcreek Rd., Lititz, PA 17543
1 Mile West of Ephrata

(717) 738-7350

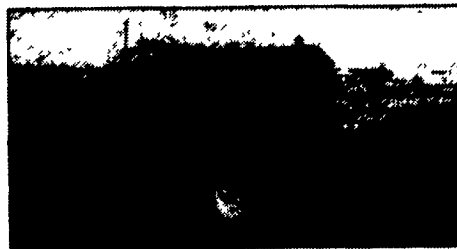


HOURS:
Mon., Thurs., Fri. 7-8:30
Tue., Wed. 7-5:30
Sat. 7-4:00

• HARDWARE • FARM SUPPLIES •

HEAVY DUTY HOOF TRIMMING TABLES

Endorsed by the International Hoof Trimming School of Wisconsin



- 12-year building experience in the tables design
- 2"x2" tube frame chute
- chute measures 75"x28"x75" high
- 4" casters for cradle fold-up
- Two hydraulic cylinders for extra stability

- 2 10-inch lift belts
- 3500 lb. axle with or without brakes
- See video on the Tilt Table available upon request

- tool box for D.C. pump and battery protection
- manure grate to keep work area clean



- fold away side gate
- removable head board
- 45 min. video from International Hoof Trimming School of Canada

Delivery Available

THREE MODELS TO CHOOSE
1. PORTABLE 2. STATIONARY 3. 3 POINT HITCH

BERKELMAN'S WELDING

RR 7, AYLMEER, ONTARIO, CANADA N5H 2R6
(519) 765-4230