

COUNTRY FARE RESTAURANT

Our customers say
the Country Fare Restaurant . . .

- "is worth the drive"
- "has good food at good prices"
- "has a warm, relaxing atmosphere in the beautiful dining room"
- "has large portions"
- "is very clean"

Join your friends and neighbors at the
Country Fare Restaurant.

Bring in
this ad for a 10% Discount
on your menu selection
Monday thru Thursday.
Offer valid thru Jan. 31, 1996.

Located 1/4 Mile East of Rt. 501 on Rt. 422
Myerstown • (717) 866-9043

Gift Certificates Available

Horticulture

HODGEPODGE

This month's column is a collection of notes pertaining to fruit and/or vegetable production. There was not an easy way to tie them all together, so I'll just present them separately.

In the last few weeks I've been involved in planning the winter meetings for both the fruit and vegetable growers in Lancaster County. You should be receiving information from your county extension office soon regarding the winter meeting schedule throughout the region.

I would like to take this opportunity to encourage you to attend these meetings. Not only do you earn credits for your pesticide applicator license but you also have the opportunity to hear about the latest developments in crop production. There is also a great deal to be learned by talking with other producers of the same commodity.

Amvac, the manufacturer of Phosdrin (common name mevinphos) has announced a recall of all unopened and opened containers of this pro-

duct. Phosdrin could be sold and used only through November 30, 1995. Since there are no longer any labeled uses of this chemical, it is important that you return any Phosdrin that may be in your spray stock.

Phosdrin was a widely labeled broad-spectrum insecticide in fruit and other crops. Phosdrin is a Toxicity Category I product, meaning it is very hazardous to humans and other mammals. Distributors and dealers should be receiving information soon about the details of the recall program. You should contact the dealer that sold you the product about returning the product.

A Phosdrin Recall Hotline has been established to assist with any questions. Call (800) 205-5330.

Fruit loss from Tufted Apple Bud Moth (TABM) was probably the highest ever in Adams County this year. It is believed that part of this problem was increased resistance to most organophosphate insecticides by TABM.

Damaged fruit cannot be sold

downgraded to utility, causing a reduction in price and subsequent returns to the grower. One well-managed orchard sustained such a high level of damage from TABM that their entire crop (8,000 bushels) had to be sold as juice.

The environmental conditions of the past growing season could also have contributed to this problem. High temperatures during the second brood hatch of TABM may have increased the rate of insecticide breakdown. In addition, some growers may have stretched the spray interval too much, particularly those spraying alternate row middles.

However, the possibility of resistance to the sprays applied for control is of great concern. Researchers at the Fruit Research Lab at Biglerville are conducting bioassays on 12 populations of TABM collected from throughout Adams County to determine if resistance to methomyl is present. I would be interested in hearing from any Lancaster county growers who had problems with TABM control this year.

The term Integrated Pest Management or IPM has been in the news frequently in recent times. IPM involves using chemical, biological, and cultural practices to provide effective, environmentally sound control of weeds and pests. If you are not already using some kind of IPM practices I would encourage you to investigate the possibility of adding one or more to your operation next year.

Unfortunately, I believe that many farmers do not fully understand the ideas behind and the actual workings of an IPM program. The main premise of an IPM

(Turn to Page A26)

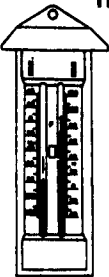
FARMER BOY AG, INC.

THERMOSTATS

Sunne Thermostat

Thermostat has sealed molded plastic case with all exposed metal parts of stainless steel. Intended for heating or cooling control.

23080261 Sunne
TF115-001 \$22



Hi-Lo Livestock Thermometer

Shows "at a glance" the lowest and highest temperatures since the last reset plus the present temperature



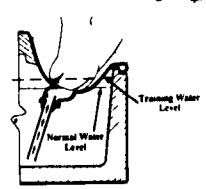
WATERING

Chlorinator



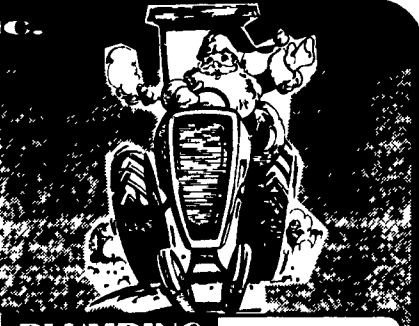
Full Line of Plasson Replacement Parts In Stock.

Nsi Noland Systems Inc. The Jug



REPLACEMENT PARTS

- Also available
- Water Meters
- Selinoid Valves
- Pressure Gauges



PLUMBING

Filters

- Filters
- Filter Housings
- Filter Replacements

HEATING

Brooder Heat Units



Brooder Sockets



Electronic Igniters



Thermocouple



KANE'S Heat Mats

These fiberglass electrically heated mats provide a warm bed for baby pigs and help increase the number of pigs per litter.

Sizes available:
Singles: 12"x36"- 12"x48"- 12"x60"
Doubles: 24"x36"- 24"x48"- 24"x60"
Triangles: 27"x27"x40"



PHILIPS Par Heat Lamps



Think of them as "Life Bulbs."

STABLING

PVC Creep Dividers



Farrowing to finishing, this planking is available for all confinements.

Hose



- Clear Reinforced • Garden
- Black Vinyl • 3/4" & 1/2" Gas



End Of Year Clearance WAS NOW

Poly Coated Calf Flooring 13070001-39"x96"	\$189	\$145
Woven Wire 5'3" x 9'3"		
Model 60 Farrowing Crates (Irregular paint finish-feeder not included)	\$181	\$100
Model 70 Farrowing Crates (Irregular paint finish-feeder not included)	\$210	\$155
Floor Frames 4x8	\$60	\$42
Poly Fan Hoods 33"Hx30 1/2"Wx36"D 11010238	\$80	\$58
7 1/2' Diameter Poly Stock Tanks	\$150	\$100
1/2 HP Front Mount Fan Motors 115/230 825 RPM 23040024	\$95	\$70
1/3 HP Motors 1725 RPM 23040138	\$165	\$115
1 HP Base Mount Fan Motors 1425 & 1725 RPM 23040041	\$214	\$160

Swine & Poultry Contracts Available. Call Our Sales Representative For Information.

Full Line of Parts In Stock For Your Poultry and Hog Needs

Hours: Mon-Fri 7 to 5
Sat 7:30 to Noon

24 Hour Service

FARMER BOY AG, INC.

410 East Lincoln Avenue, Myerstown, PA 17067
717-866-7565 • 1-800-845-3374

Swine & Poultry Systems Specialists

Check Our Warehouse Prices

