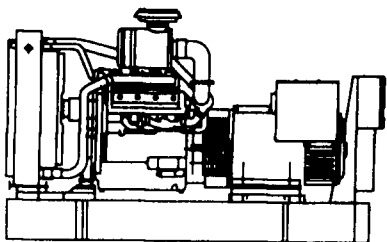


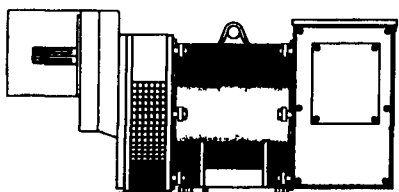
GENERATOR SYSTEMS

1-800-779-8809



New & Used 5 to 2500 KW
 Diesel • Propane • Natural Gas

24 Hour Emergency Service
 Sales - Installation
 Maintenance Contracts • Rentals



10 To 150 KW 1800 RPM Brushless
 Tractor Driven Generators



DYNA-TECH INDUSTRIES

602 E. Evergreen Rd., Lebanon, PA 17042

717-274-8899 Fax 274-5334

Ask About Our Lightning & Surge Protection Units
 Panel Mount • Plug-In • Electric Fence Protection

YORK COUNTY FARM & INDUSTRIAL EQUIPMENT CO., INC

Box 222 EMIGSVILLE, PA
 (717) 764-6412 OR (717) 764-5115



TRACTORS
 Kobelco 4 Wheel Articulated Payloader
 Ford 545 w/loader
 Ford 2000 (3)
 Ford 5610 Special II w/rollbar
 Ford 3930 45hp w/roll bar
 JD 650 w/mid mount mower
 JD 870
 Kubota L2350
 Kubota L245 w/loader
 Int 886 w/partial cab, WF, dual remotes
 Int 766
 Int 656 w/WF
 Int 444
 Farnall 460 dsl
 Farnall 130 & 140
 Farnall 200 w/loader

LOADERS FOR VARIOUS TRACTORS
TILLAGE TOOLS & CULTIVATORS
MISC.
 New 3 pt Snow Blowers
 New 3 pt Fert Spreader
 3 pt Stone Rakes
 3 pt Box Scrapers
 Regular & Heavy Duty 3 Pt Scraper Blades
 New Woods Rotary
 Mowers 5' to 15' in stock

Large Selection of
 New Used & Reconditioned
 Equipment & Tractors

FORRESTER FARM EQUIPMENT LTD.

1475 Orchard Rd. Chambersburg, PA 17201
 Phone: 717-263-0705
 Sales-Parts-Service

BEST BUYS IN USED FARM EQUIPMENT

Ford 8N w/Loader	(2) NH 479 Haybines
Ford 5600, DP	NH TR70 Combine
Ford 6600 w/Long Loader	NH 15 ft. Flexhead Alamo Batwing Mower 15 Ft.
Ford 7840, 2WD	New 6 Row White Cultivator
Ford TW25, 4WD, Cab & Air	NH 479 9' Haybine
Ford 555 TLB, 2 WD, 4 Post, 2,000 Hrs., 1981	(2) NH 489 Haybine
JD 650, 2WD	NH 770 Chopper w/Hay Head & 2 Row Corn
JD 2010 Crawler Loader	NH 770 Chopper & Grass Head
(3) NH 785 Skid Loaders	IH Manure Spreader, 1 Yr. Old
NH 455 Skid Loader	NH 680 Spreader
NH 411 Disbine	NH 254 Tedder Rake
NH 1469 Haybine	OMC 590 Round Baler

Located: 1 Mile Off Exit 8, On 696 North To Orchard Rd.

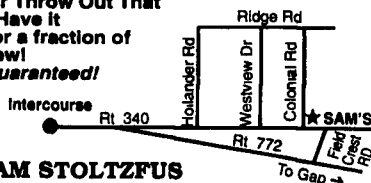
Hours: 8:00-5:00 Mon. Thru Fri.
 8:30-12:00 Saturday

8 YEARS EXPERIENCE

- Honda
- Wisconsin
- Kohler
- Kawasaki
- Robin
- Briggs

Tractors • Generators
 Fork Lifts • Welders
 Skid Loaders

Specializing in LP Towmotors
 Don't Trade or Throw Out That Old Engine. Have it overhauled for a fraction of the cost of New!
 All Work is Guaranteed!

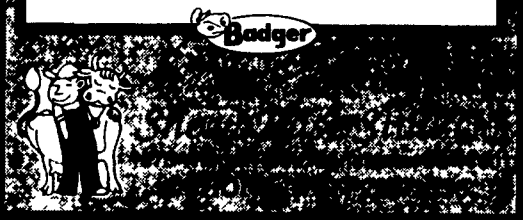


SAM STOLTZFUS
 39 Colonial Rd., Gordonville, PA
 For Service Calls, Call: 717-768-7492

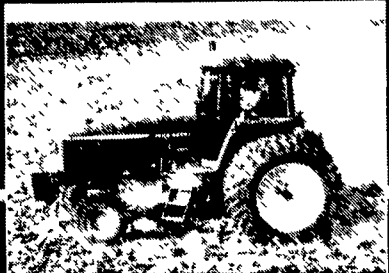
THIS WEEK'S SPECIAL

RENTALS & DEMOS - CASH SALE

- | | |
|---|---------------------|
| • 3350 Gal. Liquid Manure Tank (II) | Cash Price |
| List \$14,525 | \$10,990 |
| • 3350 Gal. Liquid Manure Tank (III) | \$7,400 |
| • 3350 Gal. Liquid Manure Tank (V) | \$8,250 |
| • 3350 Gal. Liquid Manure Tank w/4 Injectors | List \$18,900 |
| | \$9,100 |
| • 4250 Gal. Liquid Manure Tank | List \$19,925 |
| | NEW \$14,000 |
| • 352 Bu Box Spreader | List \$10,465 |
| | \$5,995 |
| • 2300 Gal. Vacuum Tank | List \$13,550 |
| | \$8,975 |
| • BN 103 6 Ft Pump | \$2,900 |
| • BN 103 8 Ft Pump, Rebuilt | \$1,600 |
| • BN 103 10 Ft Pump, Rebuilt | \$2,250 |
| • BN 103 12 Ft Pump | \$2,425 |
| • BN 185 28 Ft Lagoon Pump | List \$10,405 |
| | \$3,730 |
| • 18 Ft. or 20 Ft Agitator | Choice |
| | \$1,700 |
| • Automatic Ear Corn Roller Mill w/Husk Shredder, List \$17,475 | \$12,735 |



Intertec Used Tractor Price Guide



1996
 Consumer
 Edition

For over 45 years, Intertec has made a business of knowing the used equipment market. That's why we're able to offer you comprehensive tractor pricing, specification and loan value information. Introducing the 1996 Used Tractor Price Guide. Covering over 25 manufacturer's models from 1970-1995, this handy reference provides you with detailed information on engine size, transmission speeds, PTO hp, drawbar hp, shipping weight, approximate retail price when new, estimated trade-in values (high and low) and more. You'll also find special sections covering tractor serial numbers and their locations. Covering many tractors from 1924 through 1992. So if you're buying or selling a tractor...or just interested in model specifications, turn to the 1996 Used Tractor Price Guide for complete reference information. 1996 editions/5.5x8" softbound/Enlarged Edition 320 paper pages \$9.95.



NEW! "TRACTORS AT WORK" A Pictorial Review 1904-1994 This book shows the working history of tractors from the early years of this century until the present day. Shows early pioneer machines, tractors of sixties and seventies and finally to the sophisticated giants of today. 150 B&W, 16 color photos. 128 pages Hardcover \$29.95

LARGE DISCOUNT SPECIAL!
 BOTH ABOVE BOOKS REGULARLY \$39.90 FOR \$30.00

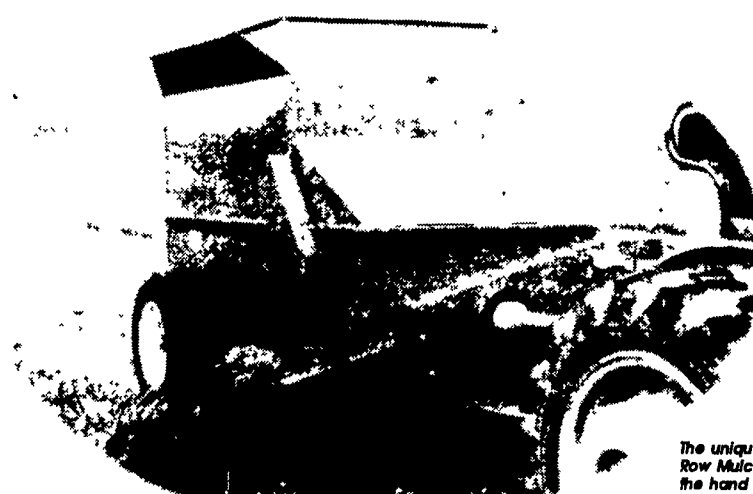
FREE! COLORED TRACTOR & LIVESTOCK BOOK CATALOG
 MASTERCARD, VISA, CHECK, C.O.D
 Shipping & Handling \$4.50 per Shipment

DIAMOND FARM BOOK PUBLISHERS

Dept LFP, Box 537, Alexandria Bay, NY 13607
 Phone: (613) 475-1771 • Fax (613) 475-3748



ORDER TOLL FREE 1-800-481-1353
 TOLL-FREE FAX: 1-800-305-5138



The unique Millcreek Row Mulcher eliminates all the hand labor for mulching.

Finally, a practical way to apply organic mulch to row crops

Organic mulch is the natural way to suppress weeds, help retain soil moisture, and improve soil conditions. Trouble is, hand mulching takes too much time and effort. Now the Millcreek Row Mulcher makes it easy and affordable to mulch berries, grapes, fruit trees, and other row crops. One operator can mulch an acre in just a couple hours, depending on conditions.

Spread A Variety of Materials, Including Lime

You can spread all types of stemless flowable mulches, such as wood chips, sawdust, chopped bark, even compost, with plenty of clearance to avoid plant damage. Plus, the Millcreek Row Mulcher is ideal for banding lime and other materials requiring lighter applications. The optional metering gate gives you complete control of the coverage so you can tailor applications to best suit your cultivation practices. With the labor-saving versatility you get with the Millcreek Row Mulcher, you may even find new techniques to grow better crops.



For Small Growers

This may be the affordable machine you've been looking for to mulch berries, grapes, and other row crops. Think of the labor you'll save.



For Commercial Growers

Choose from 3.1, 4.5, and 6.8 cubic yard capacities. Or call to discuss your special requirements.

One "Farm-Tough" Machine

With our own farming background, we take great satisfaction in building affordable machines for growers like you who need reliable, trouble-free equipment to help increase production and keep costs down. That's just what the Millcreek Row Mulcher will do for you. Call today.



(717) 656-3050
 2617 Stumptown Rd.
 Bird-in-Hand, PA 17505