

New Holland Feeder Pigs

New Holland, PA
Wed., December 6, 1995
Report Supplied by USDA
TODAY: 710 HEAD
LAST WEDNESDAY: 260 HEAD
LAST YEAR: 701 HEAD
TREND: TREND NOT COMPARABLE, INSUFFICIENT VOLUME LAST WEDNESDAY FOR A MARKET TEST. ALL PIGS WEIGHED ON ARRIVAL AND SOLD BY THE HUNDRED WEIGHT WITH 70 PERCENT GOING TO SLAUGHTER.
US#1-2: 36 HEAD, 33-38 LBS. 92.00, WEIGHTED AVERAGE 35.08, WEIGHTED PRICE 92.00; 44 HEAD 41-46 LBS. 84.00-92.00, WEIGHTED AVERAGE 44.52, WEIGHTED PRICE 89.59; 49 HEAD 60-61 LBS. 70.00-80.00, WEIGHTED AVERAGE 60.80, WEIGHTED PRICE 78.00.
US#2: 21 HEAD 63-67 LBS. 66.00-67.00, WEIGHTED AVERAGE 65.10, WEIGHTED PRICE 66.54.
SLAUGHTER US#1-2: 133 HEAD 115.00-135.00, WEIGHTED AVERAGE 21.72, WEIGHTED PRICES 125.69; 16 HEAD 36-39 LBS. 102.00-104.00, WEIGHTED AVERAGE 37.31, WEIGHTED PRICE 103.09; 75 HEAD 40-49 LBS. 75.00-86.00, WEIGHTED AVERAGE 46.77, WEIGHTED PRICE 81.77; 96 HEAD 53-57 LBS. 80.00-92.00, WEIGHTED AVERAGE 53.97, WEIGHTED PRICE 87.27; 30 HEAD 62-65 LBS. 62.00-76.00, WEIGHTED AVERAGE 63.73, WEIGHTED PRICE 66.45; 23 HEAD 73-75 LBS. 53.00-54.00, WEIGHTED AVERAGE 73.17, WEIGHTED PRICE 53.09; 14 HEAD 88-90 LBS. 48.00-63.00, WEIGHTED AVERAGE 88.71, WEIGHTED PRICE 53.43.
UTILITY AND AS IS: 33 HEAD 27-39 LBS. 20.00-50.00, WEIGHTED AVERAGE 32.30, WEIGHTED PRICE 43.05; 34 HEAD 41-49 LBS. 42.00-62.00, WEIGHTED AVERAGE 46.88, WEIGHTED PRICE 57.37; 7 HEAD 50 LBS. 40.00, WEIGHTED AVERAGE 50.00, WEIGHTED PRICE 40.00; 6 HEAD 65 LBS. 30.00, WEIGHTED AVERAGE 65.00, WEIGHTED PRICE 30.00; 26 HEAD 90 LBS. 34.00, WEIGHTED AVERAGE 90.00, WEIGHTED PRICE 34.00.
ALL PIGS CONSIGNED TO WEDNESDAY FEEDER PIG SLAE MUST ORIGINATE FROM A QUALIFIED NEGATIVE OR MONITORED HERD.

New Wilmington Graded Feeder Pig Sale

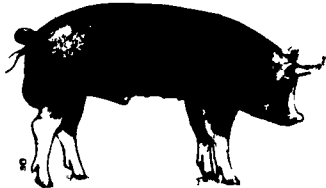
New Wilmington, PA
December 1, 1995
FEEDER PIGS 576. AVERAGES 47.0 LBS. PER PIG; 21.49 PER HEAD, 45.03 PER HUNDRED WEIGHT. ALL PRICES PER HUNDRED WEIGHT.
US#1-2 30-40 LBS. 57.50-60.00; 40-50 LBS. 50.00-57.50; 50-60 LBS. 40.00-45.00; 60-70 LBS. 50.00; 70-80 LBS. 40.00.
US#2 30-40 LBS. 40.00-67.50; 40-50 LBS. 40.00-52.50; 50-60 LBS. 35.00-40.00; 60-70 LBS. 45.00.
US#2-3 20-30 LBS. FEW 92.50-95.00; 30-40 LBS. 35.00-40.00; 40-50 LBS. 35.00.

Middleburg Hog Report

Middleburg, Pa.
Monday, December 4 and 5, 1995
Report supplied by PDA
495 HEAD...BULK OF SUPPLY SOLD ON MONDAY AND REPORTED BY THE AUCTION. BARROWS AND GILTS STEADY, SOWS 1.00 LOWER.
BARROWS AND GILTS: US#1-2 230-260 LBS. 41.50-43.00; US#1-3 225-260 LBS. 40.00-42.00; US#2-3 220-265 LBS. 38.50-41.50; US#1-3 260-295 LBS. 36.00-40.00.
SOWS: US#1-3 425-480 LBS. 29.00-32.00, 480-580 LBS. 32.00-33.50, MEDIUM 325-425 LBS. 30.00-37.00.
BOARS: ALL WEIGHTS 23.50-26.00.

New Holland Hogs

LANCASTER, PA
DECEMBER 7, 1995
TODAY 1477
LAST WEDNESDAY 1434
TREND: Barrows and gilts 2.00-3.00 higher.
BARROWS AND GILTS: US 1-3 220-250 lbs 43.00-43.50 250-270 lbs 41.50-42.00 270-290 lbs 40.50-41.00
SOWS: 1.00-2.00 lower. 10 percent. US 1-3 300-500 lbs 28.00-29.00 500-650 lbs 29.00-30.00
BOARS: 240-280 lbs 26.00-27.00 300-700 lbs 25.00



Good's Hay

Leola, Pa.
Wed., December 6, 1995
Report Supplied by Auction
TOTAL LOADS: 76.
MIXED HAY: 71.00-160.00.
STRAW: 57.00-96.00.
TIMOTHY: 95.00-140.00.
ALFALFA: 90.00-130.00.
GRASS: 67.00-117.00.
CORN: 125.00.
STUBBLE HAY: 30.00.

Dewart Hay

Dewart, PA.
Monday, December 4, 1995
Report Supplied by Auction
23 LOADS OF HAY, 50.00-150.00.
STRAW: 5 LOADS, 50.00-75.00.
WOOD: 8 LOADS, 25.00-45.00 LOAD.
CORN: 11 LOADS, 90.00-100.00.
OATS: 2 LOADS, 1.75 AND 1.85 BU.
NO SALE NEXT WEEK, DEC. 12 AND 25. SALE WILL BE HELD NEW YEARS DAY.

Lancaster Hogs

Lancaster Stockyards
Wednesday, Dec. 6, 1995
Report supplied by USDA
HOG MARKET TODAY: 1477 HEAD; LAST WEDNESDAY 1434.
TREND: BARROWS AND GILTS 2.00-3.00 HIGHER.
US#1-3 220-250 LBS. 43.00-43.50, 250-270 LBS. 41.50-42.00, 270-290 LBS. 40.50-41.00.
SOWS: 1.00-2.00 LOWER, 10 PERCENT. US#1-3 300-500 LBS. 28.00-29.00, 500-650 LBS. 29.00-30.00.
BOARS: 240-280 LBS. 26.00-27.00, 300-700 LBS. 25.00.

Indiana Hogs

SPRINGFIELD, IL
DECEMBER 7, 1995
Barrows and Gilts: Steady to .50 Higher. Demand moderate. Country Plants US. 1-3 230-260 lbs. 41.50-43.00 42.50-44.25 Few 41.00 & 43.50 2-3 230-260 lbs. 36.00-41.00 210-230 lbs. 31.50-36.00
Sows. Under 500 lbs. Steady to .50 Higher; over 500 lbs. Weak to 1.00 Lower. US. 1-3 300-450 lbs. 24.00-26.50 450-500 lbs. 26.50-28.50 500-650 lbs. 28.50-31.00
Boars: 24.00-26.00
Preliminary estimate: 42,000 * Receipts have changed due to change in reporting base.

Diffenbach Auction Center

New Holland, Pa.
Monday, December 4, 1995
Report Supplied by Auction
TOTAL LOADS: 173.
ALFALFA: 67.00-125.00.
MIXED HAY: 62.00-165.00.
TIMOTHY: 60.00-150.00.
CLOVER: 110.00.
MEADOW GRASS: 66.00.
ORCHARD GRASS: 70.00-107.00.
STRAW: 55.00-112.00.
EAR CORN: 90.00-135.00.
OATS: 2.35-2.75.
FIREWOOD: .35-.70.

Leinbach's Hay

Shippensburg, PA
December 2 and 5
Report Supplied by Auction
95 LOADS.
ALFALFA: 66.00-135.00, 1 AT 60.00.
MIXED HAY: 62.00-114.00, AT 56.00.
TIMOTHY: 50.00-100.00.
CLOVER: 72.00-76.00.
BROME: 71.00-116.00, 1 AT 68.00.
ORCHARD GRASS: 55.00-82.00.
STRAW: 55.00-70.00.
EAR CORN: 97.00-114.00.
OATS: 1.80-1.90 BU.
MULCH: 25.00-44.00.
FIREWOOD: 29.00-50.00 LOAD.

Greencastle Livestock Market

Nov. 30 and Dec. 4
Hay & Straw
Report Supplied by Auction
52 LOADS.
ALFALFA: 60.00-130.00.
TIMOTHY HAY: 87.00-98.00.
MIXED HAY: 72.00-81.00.
ORCHARD GRASS: 65.00-88.00.
BROME GRASS: 71.00-100.00.
MULCH HAY: 20.00.
STRAW: 75.00-86.00.
FODDER: 40.00.
FIREWOOD: 41.00-50.00 LOAD.

Vintage Hay

Paradise, PA
Thurs., December 7, 1995
Report Supplied by Auction
ALFALFA: 80.00-132.00
MIXED HAY: 90.00-95.00.
TIMOTHY: 92.00.
GRASS: 82.00-89.00.
STRAW: 63.00-72.00.
CORN FODDER: 45.00-54.00.
19 LOADS.
SALE TIME 1 P.M.

Regional Hay

December 4, 1995
Eastern, Pa.
HAY & STRAW MARKET FOR EASTERN PA - (ALL HAY NO. 2 AND BETTER. PRICES PAID BY DEALERS AT THE FARM & PER TON.) HAY AND STRAW STEADY TO STRONG.
ALFALFA 75.00-110.00; MIXED HAY 60.00-100.00 FEW REPORTED 120.00; TIMOTHY 60.00-110.00 FEW REPORTED 120.00; STRAW 60.00-80.00; MULCH 25.00-45.00.
SUMMARY OF LANCASTER CO. HAY AUCTIONS FOR WEEK ENDING 12/1/95. PRICES PER TON: LOADS: 219 HAY, 56 STRAW & 9 EAR CORN.
ALFALFA 88.00-146.00; MIXED HAY 75.00-147.00; TIMOTHY 90.00-145.00; STRAW 65.00-102.00; EAR CORN 115.00-127.00.
SUMMARY OF CENTRAL PA. HAY AUCTIONS FOR WEEK ENDING 12/1/95. PRICES PER TON: LOADS: 167 HAY, 29 STRAW & 9 EAR CORN.
ALFALFA 70.00-125.00; MIXED HAY 64.00-117.50; TIMOTHY 60.00-96.00; STRAW 51.00-95.00; EAR CORN 100.00-115.00.

Kirkwood Hay Auction

Kirkwood, Pa.
Tuesday, Dec. 5, 1995
Report Supplied by Auction
70 LOADS OF HAY.
MIXED: 1ST CUTTING 60.00-107.00, 2ND 86.00-134.00.
TIMOTHY: 90.00-132.00.
ALFALFA: 1ST CUTTING 87.00-116.00, 2ND CUTTING 80.00-120.00, 3RD CUTTING 120.00-139.00.
CLOVER: 88.00-97.00.
GRASS: 62.00-132.00.
WHEAT STRAW: 59.00-82.00.
BARLEY STRAW: 60.00-69.00.
RYE STRAW: 74.00.
CORN FODDER: 57.00.
OATS: 2.10 BU.
SALE TIME 11 A.M.

Green Dragon Hay

Ephrata, Pa.
Friday, Dec. 1, 1995
Report Supplied by Auction
115 TOTAL LOADS.
MIXED HAY: 42 LOADS, 68.00-161.00.
ALFALFA: 12 LOADS, 88.00-130.00.
TIMOTHY: 15 LOADS, 90.00-147.00.
STRAW: 24 LOADS, 65.00-101.00.
EAR CORN: 4 LOADS, 119.00-127.00.
ORCHARD GRASS: 13 LOADS, 80.00-122.00.
WOOD: 42.00-70.00 LOAD.

INDEX

Four Sections

COLUMNS	Dairy Niche Market..... A21
Now is the Time..... A10	Tillage Teleconference..... A22
Consuming Thoughts..... B 4	Cumberland DHIA Honors..... A24
On Being A Farm Wife..... B 5	Lancaster DHIA..... A34
All Gardens..... B 7	Christmas Giving..... B 2
Taking Time..... B 9	Lights By Thousands..... B12
Ida's Notebook..... B17	Book Captures Life..... B14
Poultry Pointers..... C 3	Cumberland Farm Women...B18
It's Showtime..... D 2	
DEPARTMENTS	DAIRY
Editorial..... A10	DHIA Focus..... A20
Farm Calendar..... A10	Md. DHIA..... C 7
Futures..... A16	Dairy Economists Explore... C 7
Mailbox Markets..... B22	HOME AND YOUTH
Sale Reports..... B26	Homestead Notes..... B 2
Public Auction Register..... B27	Home On The Range..... B 6
Business News..... C 4	Cook's Question Corner..... B 8
Classified Ads..... C 9, D 7	Kid's Korner..... B10
FEATURES	Farm Women Societies..... B17
Farmer Preservation..... A19	You Ask, You Answer..... B17
	4-H Happenings..... B 7, B19
	FFA Happenings..... B19

CARLISLE LIVESTOCK MARKET, INC.
FED and FEEDER CATTLE SALE
TUES., DEC. 12 & DEC. 26 7:00 PM
Early Bird Pens Close 2 PM
Turn South Off I-81 @ Exit 12
Market (717)249-4511
Evenings Jim (717)249-2359

Christmas Goat/Lamb Sale
TUESDAYS
DEC. 12 & 19
@ 7 PM
Rec. 9am to 5pm
Carlisle Livestock
Turn South off I-81 @ exit 12
(717) 249-4511 or evenings Jim 249-2359

PENNFIELD GRAIN BANK
Pennfield Offers A Sound Program For The Dairy Farmer To Use His Grain "Same As Cash" To Reduce His Monthly Feed Bill And To Avoid Having To Take "Harvest Price" For His Grain
Prices Week Of 12/11/95
Corn \$3.76 Bu.
Soybeans \$6.90 Bu.
Barley \$3.05 Bu.
• No Storage Charges
• Prices Updated Weekly
• Grain Bank Balance Shown On Each Invoice
• No Hidden Charges
For every ton of qualifying dairy feed purchased you will receive one ton of grain back hauled at no charge.

Walter M. Dunlap and Sons offers all cattle feeders two marketing days. Give us a call for advice and marketing conditions.
MONDAYS OR WEDNESDAYS
Consign With Us - For The Marketing Edge
Next Feeder Cattle Sale
Wednesday, December 13 - 12 Noon
Walter M. Dunlap and Sons
Lancaster Stockyards
Tel. (717) 397-5136
An Old Line Commission Firm Keeping Ahead With The Times