

SINCE 1936

M.M. WEAVER & SONS, INC.



Leola, PA 17540 Phone: (717) 656-2321

Located: 4 miles West of New Holland on Rt. 23, 1 1/2 miles Northeast of Leola on the No. Groffdale Rd., 1 mile on the right, opposite Groffdale Mennonite Church.

Demo Rental Tractors At Special Prices

MF 399 - 2 With Cab 95 HP.....	\$32,800
MF 1180, 4 Wheel Drive, 52 HP.....	\$17,500
MF 375, 2 Multi Power 60 HP.....	\$18,900
MF 253, 2 Shuttle Trans, 48 HP.....	\$12,000
MF 231, 2 Live PTO, 34 HP.....	\$10,500
MF 1230, 4 Wheel Drive, 25 HP.....	\$9,000

USED TRACTORS

MF 2705 Tractor, 120 HP.....	\$9,500
MF 285, 84 HP.....	\$11,000
MF 3525, 108 HP.....	\$15,000
MF 2675, 100 HP.....	\$11,700
MF 253, 48 HP.....	\$12,000
MF 1085, 84 HP.....	\$6,500
MF 1155 With Cab, 140 HP.....	\$9,500
MF 30E With Loader, 700 Hrs.....	\$19,500
MF 275 67 HP.....	\$6,500
MF 285 Orchard Model.....	\$8,000
MF 375 With Cab.....	\$14,000
MF 375 60 HP Rental Model.....	\$19,800
JD 2640, 48 Loader 84" Bucket, 70 HP	
Farmall M w/Rebuilt Engine.....	\$2,000

USED COMBINES

1994 Claas 690 Jaguar SN 18809-1547 4 Row Corn Head, 10' Hay Pickup Head, Roller Mill, 4WD, Auto Pilot Self Steer Feature, Cable Release Wagon Hitch, Machine Hours: 680, Engine Hours: 875.....	\$130,000
1991 MF 8460, 6 Row 30" Cornhead, 15 Ft. Flex Head	
1980 MF 550 4 Wheel Drive.....	\$19,000
1982 MF 860 With 1163 Corn Head.....	\$22,000
MF 8460 Combine, Hillside Cleaning, 6R Cornhead, 15' Floating Bar Head	
1980 MF 540, 13' Float Head, 4 Row 30" Cornhead.....	\$11,000
JD 7700 Combine	
JD 6600 w/13 Ft. Soybean Head	
MF 410 Gas, 4 Row 30" Corn Head.....	\$2,500
MF 750, 6 Row 30" Corn Head, 16' head.....	\$12,500
Gleaner "M" Combine.....	\$6,000

USED HARVESTERS

Claas 695, 6 Row Head, 10' Hay Pickup, Roller mill, 4 WD, 1 Yr. Old	
JD 5200 S.P. Forage Harvester 4 WD, 28900 Hrs., 3 RN Corn Head, Hay Head, Nice!.....	\$25,000
Gehl CB-1060 Tandem Harvester, 3 Row, 30" Cornhead, 7 Ft. Hay Pickup, Metal Alert, 2 Yrs. Old.	
Fox Super E SP Forage Harvester With 3 Row 30" Corn Head and 6 Ft. Hay Pickup.....	\$13,500
New Idea 709 4 WD Uni System With 767 Forage Harvester, 768 w/n Corn Head, 766 Grass Head.....	\$17,000

HAY EQUIPMENT

NH 1495 Diesel Haybine.....	\$7,900
Demo Vicon 1511E 5x6 Round Baler.....	\$9,900
5 KM321 Disc Mower Conditioner 10 1/2 Ft. Cut Priced From.....	\$4,900 to \$11,500
KM281 Disc Mower Conditioner, 9 Ft. Cut.....	\$4,500
Woods RM 500 3 Pt. 5 Ft. Cut Mower.....	\$600
Bush Hog 3 Pt. 5 Ft. Cut Mower.....	\$500
New! Pequea Hay Tedder	
Haybuster Tub Grinder.....	\$9,500

MANURE & FEEDING EQUIPMENT

JD 660 Manure Spreader.....	\$1,200
S.F.M. 1100 Gal. Liquid Spreader.....	\$3,500
Teagle Bale Shredder.....	\$1,900
#1830 Oswald-Butler T.M.R. Mixer Wagon	
Lucknow 285 Mixer Wagon.....	\$8,900

PLOWS & TILLAGE

M&W 5 Tooth V Ripper.....	\$5,700
JD Front Mount 4 Row Cultivator.....	\$750

MISC. EQUIPMENT

10 Ft. Tye No Till Grain Drill.....	\$5,500
Pull Type Air Blast Sprayer.....	\$1,700
Herd Pull Type 32 Bu. Seeder w/Hyd. Remote z Control.....	\$1,500
Brady 12 Ft. Flail Shredder.....	\$5,500
MF 1017 Backhoe for MF 1035.....	\$3,900
7 Ft. 3 Pt. Scraper Blade.....	\$305
2 EZ Trail Bale Basket.....	@ \$2,600
Vicon Feeders, Main Station.....	\$2,500
Vicon Feeder, Sub Station.....	\$1,500



The high quality of corn forage produced by the JAGUAR is derived from the CLAAS corn cracker. Two saw toothed rollers run at different speeds with 20% difference open up virtually every kernel and this means good quality silage which is easily digested. This makes for highest energy transfer for higher milk and meat yields. The rollers are subject to wear and tear, so the CLAAS corn cracker features removeable outer sleeves. The shafts, drive pulley and bearings are all reused, thus reducing maintenance costs. Foreign bodies pass through thanks to a spring loaded mechanism. The 7.7" diameter of the corn cracker rollers is exceptionally large. The speed differential intensifies the grinding effect for effective opening of the kernels. The degree of corn cracker intensity is adjustable to take account of differing dry matter content. This is done mechanically. An optional electrical adjustment is available. Since the corn cracker stays on the machine, the changeover from corn to grass can always with a minimum of preparation. This is a help when grass and corn are being harvested at the same time. The area around the corn cracker ahead of the cooling system is very large, enabling ease of access to parts you wouldn't otherwise be able to reach. For instance the accelerator or ejection chute.

REDUCE '95 TAXES IMPROVE CASH FLOW

Lease now to save!

Leasing a new MF combine, or tractor and matching implements before year end could save you a bundle on taxes.

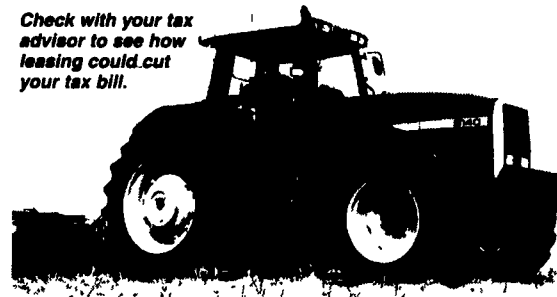


Advantages of leasing

Example based on \$69,000 for 5 years

	Purchase	Lease
Initial payment	\$20,700 00	\$12,151 28
1995 Cash Flow Advantage		\$8,548.72
Depreciation	\$1,849 20 (2.68%)	
Lease payment		\$12,151.28
Total deduction	\$1,849.20	\$12,151.28
1995 Potential Tax Advantage		\$10,302.08

Check with your tax advisor to see how leasing could cut your tax bill.

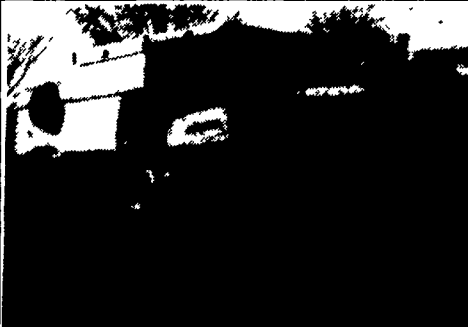


1994 Claas 695 Jaquar, SN 1890-1625
6 Row Folding Corn Head, 10' Hay Pickup Head, Roller mill, 4WD & Auto Pilot Self Steer Feature, Optional Hydraulic Kit, For Hi Dump Wagon, Rotary Screen, Machine Hours: 480, Engine Hours: 700

\$139,000

1994 Claas 690 Jaguar SN 18809-1547 4 Row Corn Head, 10' Hay Pickup Head, Roller Mill, 4WD, Auto Pilot Self Steer Feature, Cable Release Wagon Hitch, Machine Hours: 680, Engine Hours: 875

\$130,000



1991 Gleaner R-60 Rotary Combine, 18' Floating Head, 2000 Hours

\$68,000