

**TANEYTOWN FARM EQUIPMENT**

Route 832 - 1 mile east of Taneytown, MD

**410-751-1500**

**Bush Hog® King Cutter**



JD 4430

Int. 606D w/Loader

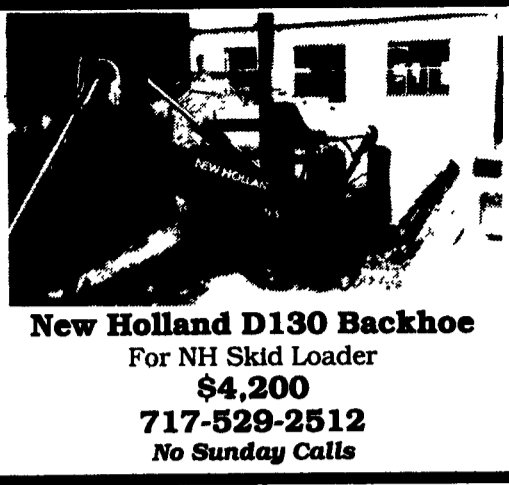


Koehring 1350 Seat Trak

Ford 1920 w/Ford Loader

AC 7045 W/cab	\$7900	NI 202 spreader, sharp..	\$895
Farmall BN	\$975	NH 847 round baler, excellent..	\$3795
Farmall Cub w/new mower	\$2850	NH 256 rake	\$1750
Farmall H new rubber	\$1500	NH 455 mower..	\$900
Farmall Super A/mower	\$2500	Woods 121 offset	\$1500
Ford 801 w/PS	\$2500	Woods D80, like new	\$1450
JD 1010, nice.	\$3750		
JD 3010D, WF	\$4250		
JD 650 4x4 loader	\$7995		
JD 750 4x4 W/loader & hoe..	\$9500		
NH 469 haybine	\$850		
JD #54 manure spreader, excellent	\$1295		

**BUSH HOG® MOWERS 20% off**  
**BUSH HOG® LOADERS up to 30% off**  
 Call for price  
 Shaver Post Drivers Complete  
 HD 8 \$1,095  
 HD 10 \$1,750



**New Holland D130 Backhoe**

For NH Skid Loader

**\$4,200**

**717-529-2512**

No Sunday Calls

**SAVE, SAVE**

**GEHL MODEL 7210**

Blender Feeder w/ Digital Scales

Like New w/Warranty

**New List, \$14,900**

**Cash Price, \$8,975**

**DJ IMPLEMENTS - PA**

**Call (717) 949-3769**

From 7:30am-5:00pm

**Virginia Office (540)879-9926**

From 9:00am-4:00pm

**Motorized FEED CARTS**  
 Available in 4 Sizes

**Bodco BEDDING CHOPPERS**  
 Chops Straw, Hay or Paper With Our New 6 Rows Of Knives

**Model 3600 Liquid Manure Spreader In Stock with Steering Axle & Flotation Tires AVAILABLE FOR RENT**

**ALSO:**  
 Bodco Utility Carts  
 Bodco Manure Pumps  
 Bodco Water Bowls  
 Bodco Manure Spreaders  
 Bodco Barn Cleaners  
 Bodco Landscaping Chopper

*We are an authorized BODCO Distributor — Dealers Welcome.*

Sales & Service  
**ROVENDALE AG & BARN EQUIP.**  
 WATSONTOWN, PA 17777  
**717-538-9564 OR 717-742-4226**  
 Exit 31 I-80 to I-180 Watsonstown Exit  
 Hours Mon-Fri 8 to 5 Sat 8 to 12

**H&S "HEAVY DUTY" MANURE SPREADERS**

*Smooth — Even — Positive Spreading*

<b>Model No.</b>	<b>80</b>	<b>125</b>	<b>235</b>	<b>270</b>	<b>310</b>
Capacity—Old Rating	80 Bu.	125 Bu.	235 Bu.	270 Bu.	310 Bu.
Capacity Cu. Ft. Struck Level		75	143.	167	185

<b>Model No.</b>	<b>370</b>	<b>430</b>	<b>175</b>
Capacity—Old Rating	370 Bu.	430 Bu.	175 Bu.
Capacity Cu. Ft. Struck Level	235	275	105

**Contact Your Local Dealer Today:**

<b>ADDISON FARM &amp; INDUSTRIAL</b> Addison, PA	<b>FLINNER EQUIP.</b> Prospect, PA	<b>NEW ALEXANDRIA FARM SUPPLY</b> New Alexandria, PA
<b>BANGOR IMPLEMENT</b> Bangor, PA	<b>G&amp;D EQUIP.</b> Manheim, PA	<b>NORMAN D. CLARK</b> Honey Grove, PA
<b>BARTOSEK AGRI S&amp;S</b> West Springfield, PA	<b>GALLUP &amp; TENHAKEN</b> Clymer, NY	<b>NORTHEAST DISTRIBUTORS</b> West Clifford, PA
<b>JOHN BROWN EQUIP.</b> Perryopolis, PA	<b>HARTS FARM EQUIP.</b> Cochranon, PA	<b>SMITH IMP. INC.</b> Mercersburg, PA
<b>D&amp;E EQUIPMENT</b> Bloomsburg, PA	<b>HESS FARM EQUIP.</b> Canton, PA	<b>SCHEFFEL EQUIP.</b> Somerset, PA
<b>DOTTERER EQUIP.</b> Mill Hill, PA	<b>HETRICK FARM SUPPLY</b> New Bethlehem, PA	<b>SWEIGER EQUIPMENT</b> Avella, PA
<b>ECKROTH BROS. FARM EQUIP.</b> New Ringgold, PA	<b>HOOVER EQUIP.</b> Tyrone, PA	<b>TRIPLE H TRACTOR</b> Peach Bottom, PA
<b>FINCH IMP.</b> Hanover, PA	<b>LOST CREEK IMP.</b> Oaklands, Mills, PA	<b>WATSON INC.</b> Sharon, PA
	<b>McDOWELL FARM &amp; IMP.</b> Grove City, PA	<b>ROBERT WILKINS</b> Saxton, PA

For More Information, Contact Your Local Dealer Or  
**H & S Manufacturing, Co.**  
 Ripley, NY (716) 736-7595

**TOOL SHED OF AMERICA**  
 DEPARTMENT L F  
 4294 EAST HARRISBURG PIKE  
 MIDDLETOWN, PA 17067  
 (717) 944-0318

**HOURS: Mon.-Fri. 9-6**  
 Saturday 9-2  
 Sunday - Closed

**FOR MORE INFO CALL OR WRITE**

**AUTOBODY PARTS, PAINTS & SUPPLIES**

- ACRYLIC ENAMEL PAINT AS LOW AS \$28.95
- URETHANE HARDENER DOES A GAL. \$12.95
- SANDPAPER-6" DA SELF ADHESIVE, 100 PER ROLL-LOW AS \$19.50, ALSO DRY BACK DA, WET & DRY SHEETS, LONG FILE!
- 73-79 CHEVY, FORD, TK FENDERS \$49.95
- BODY FILLER-CASE OF 4-GAL. \$33.95

100% OF OTHER ITEMS AT BIG SAVINGS!!

**WE HAVE 100s OF HAND-TOOLS, AUTO PARTS, STATIONARY EQUIPMENT AND MORE AT THE STORE. STOP OUT AND BROWSE**

**"TRAILER PARTS"**  
 ANGLE & CHANNEL IRON, BOX TUBING, LIGHTS AXLES, COUPLERS, WIRING, CHAINS & TIEDOWNS, Etc., Etc.

**CLASS III HITCH RECEIVER**  
 10,000 Lb. MGTWR, In Stock For Most Domestic & Import Pickup Trucks & Vans.  
 FOR MOST POPULAR FORD CHEV. & DODGE PICKUPS and FORD EXPLORER KIT OTHER APPLICATIONS UP TO \$99.95

**AIR COMPRESSORS**  
 8 HP. VERTICAL ASME CODED TANKS, 2-STAGE PUMPS, CAST IRON CYL. INDUSTRIAL MODELS W/MAJ STARTER IF REQ.  
 LOW AS \$699.00 ALSO 7 1/2 HP. AVAILABLE

**SAND BLASTERS OF MANY SIZES, CUTS RUST IN ONLY MINUTES**

**JERRY MARTIN REPAIR**  
 391 N. Farmersville Rd., Ephrata, PA 17522  
 (Just minutes off RT 222)  
**(717) 859-3283**  
 No Reasonable Offer Refused  
 Custom Repairs On All Makes Industrial & Farm Equipment

**JD 544B, New Tires, Forks, Grapple, good cond. \$23,000**

**Cat 941B Good Cond. \$15,000**

**WE ARE BUYERS FOR CONSTRUCTION EQUIPMENT NEEDING REPAIRS**

Bobcat 533 Skid Loader, Diesel.....	\$4,800	JD 450C Crawler Loader, Good Condition.....	\$15,000
'85 Clark 5000 lb. Forklift, hard rubber.....	\$2,400	JD 450C 6-way blade.....	\$15,000
Fiat Allis 544B wheel loader, rebuilt motor, good cond.....	\$17,000	'85 JD 455E, new tracks, cleaned & painted.....	\$22,000
JD 350 Crawler Loader, rebuilt motor.....	\$8,200	JD 544A wheel loader.....	\$16,000
JD 350C Crawler Loader, Good Cond.....	\$11,500	JD 644B Wheel Loader, Good Condition.....	\$22,000
JD 350C Crawler Loader, Good Condition.....	\$13,000	JD 544 wheel loader, rebuilt motor.....	\$13,500
JD 350C, 6-way blade.....	\$13,500	Trojan 1500, 353 Detroit.....	\$12,000

**1989 JCB 1400B Site Master 4 in 1 Bucket & Forks \$23,000**

**JD 440A, rebuilt motor, new tires and paint \$12,500**