

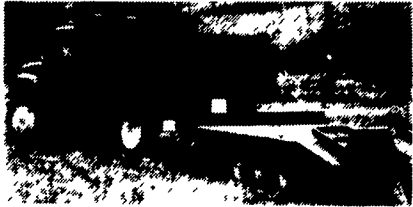
**35 TRUCKS & TRAILERS**

**DUMP & TAG-A-LONG**

'88' Intl. S-1954 - '95' Galion Body w/15 Ton Hoist & Tarp DT-466-7 spd. P/S - Block Heater - Budd's  
**Asking \$21,950 OBO**

'79' General 9-ton - Elec Brakes, New Tires w/Spare  
**Asking \$3,250 OBO**

Both Units in "Excellent Condt."  
**(610) 381-3286**



Killbrew 4-box hydraulic side dump trailer, needs work. 410-810-1957.

Mack dump truck B67, runs good w/snowplow. Also Tonka tag-along, triaxle trailer, good condition, 20' bed. \$4,800 OBO for All. (215)654-9237.

Mack truck parts, engines, transmissions. K&K TRASH REMOVAL 410-766-6571.

New 366 truck motor they cost \$3300. sell for \$1300.; 717/762-7940.

Oil tankers w/vapor recovery, trailers ready to work! '80 Freuhauf 8600 gallon, \$9000 OBO; '79 Freuhauf, 9000 gallon, \$6000 OBO; '75 Pennco 8500 gallon, \$6000 OBO; '72 Frehuauf, 8200 gallon, \$6000 OBO 410-272-6807

One ton 5'X9' utility trailer single axle, ramps, good condition. \$375 717-933-5233 evenings

TRUCKS DT 466, (3) to choose from; Mack dumps, (2) to choose from. ROAD TRACTORS: 1990 Mack 350, 9 speed, very clean; 1991 Volvo, 400 Cat, extra clean 717-463-3701.

**MOTORS**

New & Rebuilt 350, 366, 427, 454

6.2 Diesels Rebuilt & Used

Will Install Ro'l Back Service (at cost)

**717-762-6415**

**R & R CAR AND TRUCK CENTER**

1657 Rohrerstown Road, Lancaster, PA

1986 IHC 1954 DT466, 5 & 2 Spd., P/S, A/B, 33,200 GVW, 16' Thiele Steel & Alum Grain Body, New Paint & Insp. Very Clean Only 156,000 Mi  
**\$16,900**



1988 IHC S1954, With Toter Package, DT466, 215 HP, 5&2 Spd., A/B, A/C, P/S, 35,000 GVW, Also Can Be Converted For Gooseneck or Dump  
**Call For Details**



1981 GMC Brig., 6-71 D D, 9 Spd., P/S, A/B, 35,000 GVW 22' C&C, Double Framed, New Insp., Clean  
**Only \$7,000**



(10) 28'-40'-45' Storage Trailer

**Call Ray Leed 717-560-4901**

**Royal Truck & Equipment, Inc.**

6910 Route 309 Coopersburg, PA 18036

(610) 282-4090  
(800) 283-4090

Coming Soon Grain Body.

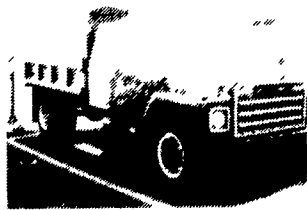
Just Off I-78, Between Allentown & Quakertown Financing Pre-Approved



1987 Ford F700, 10 Dumps, 7 8L Turbo Dsl 5/2 Spd. New Rugby Dump & Hoist 30 000 GVW AB Call Now



1986 Ford E250 Cargo Van 4 9L Gas, AT, PS, PB, Very Clean, New Insp \$4,950



1981 International S1700, Dump w/Rev Pack Under CDL 9 0L Dsl 5 Spd New Rugby Dump & Hoist



Low Mileage! 1984 IH 1754 Crew Cab Dump, 22 000 Original Miles 22 300 GVW, AT PS, PB 9 0L Dsl



1981 International 1854, 10' Dump w/Crane, DT 466/210 5 Spd PS AB PTO



1984 Ford F700, 12 Flatbed, 48,000 Original Miles! Under CDL! 24 500 GVW, 370 Gas, 5/2 Trans PS PB Pintle Hook

**TWO ACRES OF ALL TYPES USED TRUCKS. "IF WE DON'T HAVE IT, WE'LL GET IT"**

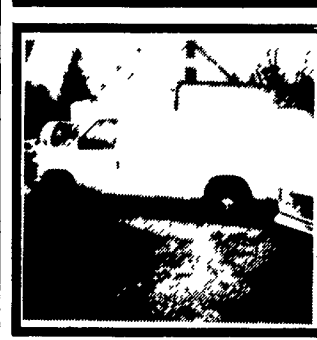
**TRUCKS**

The Best Selection of New & Used Trucks Is At Pennsylvania's Leading Truck Source

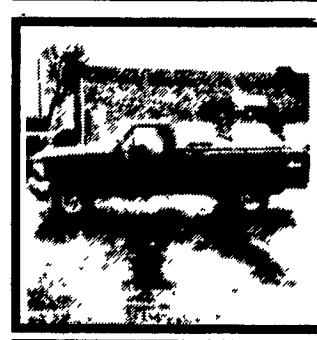
**NEW HOLLAND FORD**



**NEW 1996 FORD F-150 4X2 PICKUP** **SAVE OVER \$2400!**  
4.9L 6 cylinder engine, 5-speed transmission, power steering & brakes, air conditioning, FM/AM stereo, argent step bumper, pinstripes & more! #F6012  
**NOW ONLY \$13,998**



**NEW 1996 FORD E-250 SUPER CARGO VAN**  
5.8 liter V8 engine, automatic/overdrive trans, power steering & brakes, air conditioning, stereo cassette, sliding cargo door, swing-out side glass and much more! #F6198  
**NOW ONLY \$19,998**



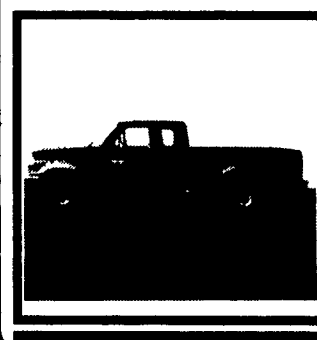
**NEW 1996 FORD F-150 4X4 PICKUP** **SAVE OVER \$1251!**  
4.2 liter 6-cyl engine, 4 wheel drive, 5-speed transmission, air conditioning, power steering & brakes, stereo cassette, XL trim, argent step bumper, pinstripes & much more! #F6009  
**NOW ONLY \$17,319**



**1993 FORD F-150 XLT**  
V8, air cond, pwr wind & lcks, cruise, tilt wheel, chrome wheels, super sharp! Look at this price, it is NOT a misprint!!! #F4816C  
**NOW ONLY \$10,987**



**1994 FORD F-250 SUPERCAB XLT**  
Turbo diesel, auto trans, w/OD, air cond, pwr. wind & lcks, cassette, capt. chairs, lrm. slip axle, cap, cruise/tilt, sharp two-tone & much more! Ready to go! #F6065A  
**NOW ONLY \$17,998**



**1994 FORD F150 XLT SUPERCAB 4x4**  
V8 engine, automatic transmission, fully-loaded, two-tone, aluminum wheels, low miles, bought here new, priced like a regular cab! #P8732  
**NOW ONLY \$19,983**

**REPLACEMENT TRUCK BED**

7' LX 71" W or 85" W  
8 1/2' LX 80" W or 90" W  
10' LX 88" W  
Wood or Steel Floor

Also Available in 4'x7' and 4'x8'

5'x8' Starting at \$650  
5'x10' Starting at \$695

**UTILITY (TILT OR GATE MODEL) SIZES:**  
5x8, 5'x10' 2000# GVW 5'x10 6'4"x10  
6'4"x12', 3000# GVW

**UTILITY WITH GATE-SIZES:**  
18'x76", 18'x76", 7,000# GVW,  
20'x81" 12,000# GVW

Also Available in Car Haulers 16', 18' 7,000# GVW

**FLAT BED: Sizes: 18'x76", 18'x81"**  
7000# GVW, self storing 80" long ramps

**STARTING AT \$795.00**

**Car Dollie**

**USED 10' V-Type Snow Plow** Asking \$650  
**NEW 8 1/2'x90" Wooden Floor Truck Beds** Asking \$550

**Over 400 Trailers In Stock**  
Starting At \$475.00  
T-Plates  
**DEALERS WANTED**

**HIGHWAY HYDRAULIC DUMP**

5'x8', 3000# \$2,050  
6'x10', 7,000# \$3,095  
6'x10', 10,000# \$3,495  
7'x12', 10,000# \$3,995

**DROP AXLE CONSTRUCTION**  
14' 7000# or 12,000# GVW

Starting At \$3795 w/4' Adj. Tail

**GOOSENECK SIZES: 20'x8" 12,000# or 14,000# GVW, 24'x8" 14,000# GVW**

**DECK-OVER CONSTRUCTION**  
18'x8' w/Tail 10,000# GVW \$2,995 & \$3,295

**New Holland FORD & ISUZU TRUCKS**  
Route 23, New Holland PA  
**717-354-4901 • 800-642-8605**