

35 TRUCKS & TRAILERS

Utility Trailer 6 1/2 'X16' Tandem Axle 8000 Lbs. GVW, \$1800. (610)856-1386.

WANTED: 1960-66 GMC, 11,000 gross (one ton) truck with V-6 engine, fair condition. (717)528-4430.

CASH FOR USED DIESEL TRUCKS

- WE NEED 1/2 TON TO ONE TON:
- FORD DIESELS
 - SUPERCABS
 - CREW CABS
 - DODGE CUMMINGS
 - 2WD or 4x4
 - DUALIES
 - DUMPS
 - UTILITY BODY
 - FLAT BEDS
 - CAB & CHASSIS
 - SUPER DUTIES

LOW MILEAGE ONLY PLEASE

Before you sell or trade your diesel in somewhere else for LESS, CALL US!

We Pay More for Used Diesel Trucks Than Anyone.

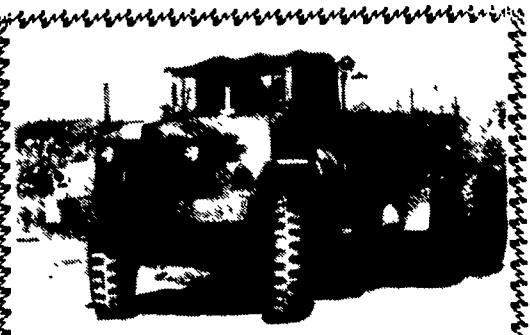
717-949-2000 **TRY US!**

or 610-678-3243



RD 7, Box 405
Lebanon, PA
17042

Ask for Smokey or Kay **KELLER BROS.**



MACK 6x6 TRUCKS

Cummins V8 Diesel Jake and full Air Brakes P.S. 1400/24 Tires Double Frame Rear Drag Winch (50,000 lbs.). Differential Locks. (60 Tons) Hauling Capacity. Like New Only 800-17,000 Miles. A must for every Farmer.

\$10,500 to \$12,500

(814) 834-1018 St. Marys, PA

CHAINS

Car, Truck - Tractor

All sizes in Stock

Save up to 40% off until Nov. 31, 1995

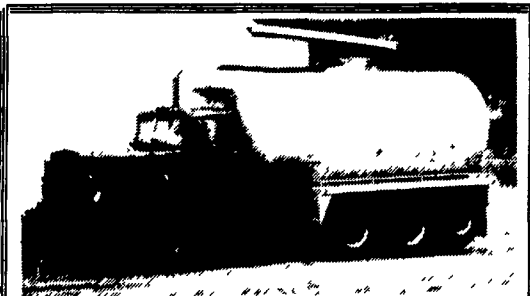
Meyer Snow Plow, Salt Spreader

Parts & Service

EAGLE MACHINE CO.

Route #100 Eagle, PA
Chester Co.

610-458-5326



5700 Gallon Vacuum Tank

8" load & unload valves
24" tires, 65,000 rears
270 Cummins, 13 speed, Good running truck
\$22,500. O.B.O.
717-263-8091



'79 BOCATS TRAILER

40', 88 yd. Trailer, Walking Chain Floor,
Fair Condition, Works O.K.

\$7,500 OBO

Mt. Joy, PA

717-653-9580

OVER 60 YEARS IN BUSINESS!
WOLF MOTOR CO.

ROUTES 72 & 283, LANCASTER, PA 17601

CENTRAL PA'S

FORD TRUCK DEALER

Sales Reps.
Charlie Burke

Gary Breneman
Dennis Asel, Mgr.

717-299-4331

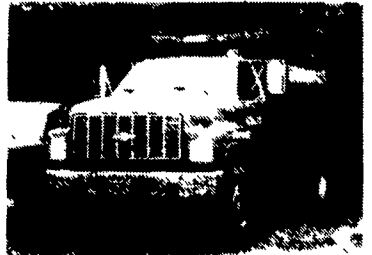
Toll Free 800-637-6612



1995 FORD F800
Single Axle Dump 25,000 GVW,
190 Hp Diesel 5+2 Speed
\$34,600



1993 FORD F350 4X4
7.3 Liter Turbo Diesel, XLT Package,
9' Eby Alum. Body w/Gooseneck
\$18,900



1992 CHEVY 7500 SERIES
10' Dump Body, 427 V-8 Gas,
5+2 Speed, 55,000 Miles, 33,000 GVW
\$26,500 \$25,600



1994 FORD F350 XLT
351 V-8, 5-Speed Manual
9' Steel Flat Bed
\$16,800 \$16,200



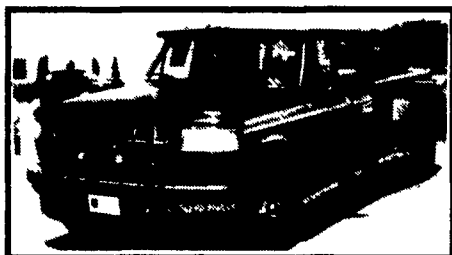
1989 FORD LS 8000
33,000 GVW, 215 HP Diesel,
6 Speed, 24' Van Body w/ Lift Gate
\$16,900 \$15,900



1991 FORD LN 7000
170 HP Diesel, 6 Speed Trans,
22' Van Body, 26,000 GVW
\$17,400 \$16,200

Mark Vills • Pickups • Broncos • Stake Body • Crew Cabs

Contours • Aspires • Diesel Pickups • Mustangs • Thunderbirds



Great Selection F250's & F350's Supercab & Crew Cab

Power-Stroke Diesels In Stock



'96 FORD F350 Crew Cab
Centurian Conversion
Turbo Diesel - Auto
6 here and 4 coming



'96 FORD F250 4x4
Crew Cab - Turbo Diesel
Brand New Model - Auto #1175
Save \$1,500 on this unit



'95 RANGERS 4x4
w/Luxury Package, 10 to choose from
Big Discounts



'96 FORD F250 4x4 Supercab
7.3 Turbo Diesel, Automatic #1086
Hard to Get - Come and Get It



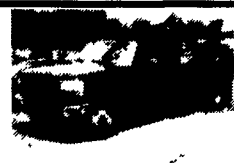
'96 FORD EXPLORERS
945 A Package
30 To Choose From



'96 FORD WINDSTARS
"the Future Of Minivans"
20 To Choose From



'95 LEFTOVER F150'S
Only 7 Left - Big Discounts
Hurry, they're going fast!



'95 FORD F350 DUMP 4x4
Power Stroke, Automatic #7140
Was \$34,357 Clearance **\$26,999**



'94 FORD F150 4x2
V8, 5 Spd., XLT Pkg. #P2483
Was \$14,999 NOW **\$14,150**



'95 FORD F250 4X4
Stahl Body, 351 Auto #9968
Was \$23,435 Clearance **\$21,500**



CARGO VANS
E150, E250 & E350
All 95 Leftovers, 12 to choose from
Discounts of \$2,000 to \$3,000



'94 FORD F150 Super Cab
V8, AT, XLT Pkg, Captains Chairs,
Only 20,000 Mi., Ex. Shape #P2262
Was \$19,999 NOW **\$19,000**



'93 FORD F150 4x2
6 Cyl., 5 Spd., Custom XL, #7090A
Was \$10,900 NOW **\$9,999**



'91 FORD RANGER 4x4
6-Cyl., AT, AC, SWR #8671A
Was \$13,999 NOW **\$12,999**

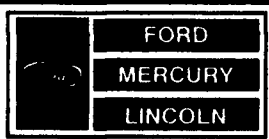


'93 FORD EXPLORER 4x4
6 Cyl., AT, A/C, Loaded, Sun Roof,
23,000 Mi. #PP2377
Was \$21,999 NOW **\$17,999**



'94 FORD F150 4x2
302 V8, AT, XLT Pkg., #7278A
Was \$15,999 NOW **\$13,499**

Unless the Sheehy Emblem is on Your Car or Truck... You Probably Paid Too Much!



SHEEHY LEBANON

-20th & CUMBERLAND STS. - RT. 422 WEST

9-9 DAILY, 9-5 SATURDAY • SHEEHY HOTLINE (717) 272-7671 OR 533-5293

PARTS DEPT. OPEN
DAILY 8-5
SAT 8-12
717-273-8168

Explorers • Grand Marquis • XLTs • Custom Vans

Mystiques • Cougars • Continentals • Town Cars • 4x4s • Rangers