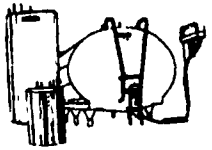


**6 DAIRY EQUIPMENT**

Germania automatic take-offs, very thoroughly reconditioned, most models available, sold with one year parts warranty. Delivered and installed on your farm. Buy or lease! Mid-state Dairy Systems, DeRuyter, NY, 13052. (315)852-9591.



- 1-1500 Gal. O Mueller
  - 1-1000 Mueller
  - 1-1000 Gal. DeLaval
  - 2-600 Gal Milkkeeper
  - 1-600 Gal. Zero
  - 400 & 500 Gal Muellers, Mojoniers, Milk Keepers, Sunset, Girtions
- MANY MORE GOOD USED COOLERS IN STOCK

**MARTIN'S REFRIGERATION**  
(717) 352-2783

**7 LIVESTOCK EQUIPMENT**

1-5'X7' Platform Livestock Scale. Beam Type. Capacity 5,000lb \$1,000. (814)634-8527. Call After 8PM

**CLASSIFIED ADS**

PHONE 717-628-1184 or 717-384-3047  
FAX 717-733-9088  
Mon., Tues., Wed., Fri. 8 AM to 5 PM, Thurs 7 AM to 5 PM

**7 LIVESTOCK EQUIPMENT**



**G&G INDUSTRIES**  
242 Buchanan Drive  
Ephrata, PA 17522  
717-733-9396

Vinyl  
Horse Rail and Yard Fencing -  
Decks & Docks

Warehouse: 469 N. Reading Road  
(Rt. 272 North), Ephrata, PA

**ASK ABOUT OUR OTHER TYPES OF FENCE!**

**FENCING**

- High Tensile
- Split Rail
- Board Fencing
- Wire Mesh Horse Fence
- Material or Installation

Check Our Prices.

Call New Holland Fence  
717-656-9596

**KENCOVE FARM FENCE**

111 Kendall Lane, Blairsville, PA 15717

FREE GUIDE "TENSILE FENCE" 1-800-245-8902  
412-459-8991

Crimp Tool - 4 Slot

\$49

12-1/2 Gauge Crimp Sleeve \$9/Per Hundred

**SPLIT RAIL FENCING**

Looking For Heavy Duty Split Rail Fencing?

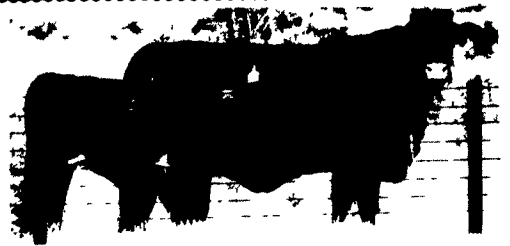
- \*Pressure Treated Posts and Rails
- \*Long Lasting Warranty
- \*2, 3 and 4 Rail Fence Available
- \*Low Prices
- \*Wholesale and Retail
- \*Manufacturers of Outdoor Wood Fencing
- \*Installation Available

Before You Buy Call  
New Holland Fence  
717/656-9596

5192 Mine Rd., Kinzers, PA 17535  
Call Between 6:00 & 6:30 a.m. or p.m.  
717-442-8486

**A & J FENCING**

All Types Of Fencing  
\*High Tensile \* Post & Board  
\* Split Rail \* Cross Board  
\* American Wire  
\* Chain Link \* Etc.  
We Also Do Post Driving



**DURA FENCE**

Call Today For Reasonable Prices On  
High Tensile - Split Rail - Board Fence  
Free Estimates

R.D. #1 Box 210 Robert Martin  
Beaver Springs, PA 17812 (717) 658-4470

**STALL MATS**

All rubber mat totally designed for animal comfort.  
Ask about our different sizes  
Free Delivery • Call For A Free Sample

**KAUFMAN'S**

216-222-1856  
Installation Available

**RUBBER MATS**

for  
Comfort Stalls, Free Stalls,  
Horse Stalls, Horse & Cattle Trailers,  
Hog Houses. Used Belting Material  
Welsh Hill Farm Supply

Paul N. Brubacher  
610-286-5298 or  
Raymond 610-286-0168  
Glenn 610-286-0706

**MAX-FLEX** where the bull stops!

**HIGH TENSILE & ELECTRIC FENCING  
MAX-FLEX FENCE SYSTEMS  
Grace Custom Services**

Edgar G. Grace  
RD 1, Box 421, Red Lion, PA 17356  
717-927-6736

**Central High Tensile**



JOSEPH H. HICKS  
814-632-8489  
814-632-3050

**Fence Construction**

**Rotational Grazing  
Our Specialty**

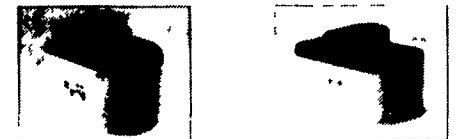
**All Kinds of Fence**

Including  
High-Tensile  
Woven Wire  
10 ft. Deer Fence  
Spider Fence and  
Water Systems  
3/4" - 1" - 1 1/2"

**Zimmerman's**

- Square Bale Feeder
- Automatic Headgate, Gates & Fencing
- Loop & Freedom Stalls
- Water Bowl & Suspended Comfort Stalls
- Slant Bar Feed-Throw

**ENERGY FREE UNITS**



Model CT 1

Model CT 2



Model CT 4



CLEAN UNTESTED PIPES 1/2" to 6"

**GROOMING CHUTE**  
• Coated with baked on TOIC Polyester Urethane Powder  
• For safe and easy grooming, washing and clipping cattle  
• Expanded metal floor stays cleaner and gives more traction  
• Assembles and disassembles quick and easy  
• Can easily be moved and installed by one person

**DRY HILL FARM SHOP**

RR #1, Box 426  
Lykens, PA 17048-9744  
Call For Details  
(717) 365-3109 8:00-8:30 a.m.

**SUPER BOWL** The Most ADVANCED Design in Waterers!

**ENERGY FREE WATERER**

- A Model For Every Need - 1, 2 and 4 Opening
- Unique Hinged Door Closure - Easy to Operate
- Suitable for All Animals - Cows, Calves, Sheep, Hogs, Etc.

New Model 352

WE SHIP VIA UPS ANYWHERE with New Features!  
Dealerships Available

**MID-ATLANTIC AGRISYSTEMS**  
1-800-222-2948

(4) Five stall calf hutches, built on 6x6 treated skids, asking \$700 each OBO. 717-692-4120.

50 gal. stainless steel milk mixer w/3/4hp electric motor. Excellent condition. Asking \$325. 717-692-4301.

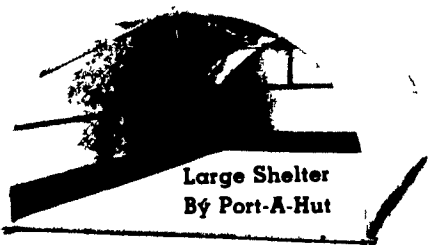
Cedar Fence Posts, 5"D, 8'L, \$4.75/each. 717/354-3105.

FREE GUIDE -TENSILE FENCE, Strong -Lasting -Economical; also portable electric fence. Phone Order Supplies 1-800-245-6902 & (412-459-8991).

"TRAILER HITCHES" PARTS... SERVICE... INSPECTION... TOW DOLLIES "GLICKS" 717-656-7027



14 Peterson Dr., Storm Lake, Iowa 50588  
712-732-2546  
Manufacturers of quality affordable hog and calf huts since 1963



Large Shelter By Port-A-Hut

**INDIVIDUAL FARROWING AND CALF HUT BY PORT-A-HUT**  
All steel completely assembled, ventilated, 7 1/2' long, optional front doors, guard rails, pig rollers and pens

Approximately 12 wide 7 high or 14 wide 8 high, preassembled 7 sections giving a choice of 14 21' 28' length. Set up in 2 to 3 hours. Built for livestock. Completely portable 20 gauge wall protectors added on the inside. Can be used for almost anything. Skids and all hardware for assembly included

**LEMMON FARM**, 855 Alexander Spring Road, Carlisle, PA 17013  
(717) 249-8434 800-738-8434  
See us at the PA Farm Show Space 593 - 594

**CHRISTMAS & NEW YEAR  
LAMBS & GOATS  
HOLIDAY SALES DATES**

Monday, Dec. 18 - Sale Time 9 A.M.  
Wednesday, Dec. 27 - Sale Time 9 A.M.

We Will Be Closed Monday Christmas, Dec. 25 and Monday Jan. 1, 1996

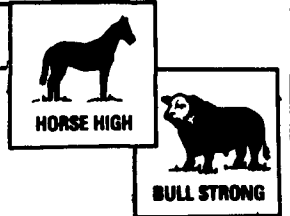
1996 - First Sale Date - Wed., Jan. 3, 1996

**Walter M. Dunlap and Sons**  
Lancaster Stockyards  
Tel. (717) 397-5136

**"GOOD FENCE/GOOD NEIGHBORS"**

Specializing in HIGH TENSILE Fence Installation Since 1979  
Plus Installation of:

- Split Rail • Board • Woven Wire • 2x4 Wire
- Diamond Mesh • Streambank Fencing
- Deer Control & Containment Fencing



**Ag FENCE**

P.O. BOX 168, HOPELAND, PA 17533 • (717) 738-4774

