

Public Auction Register

Closing Date Monday 5:00 P.M.
of each week's publication

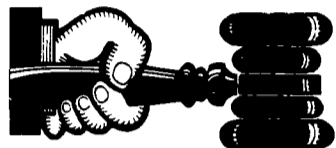
THURS MAR 7 - 9:30AM
7 Draft Horses, 30 Head
Holstein Heifers, 12 Bred
for 96 Freshening, Full Line
of Horse Drawn Farm
Machinery. 8 Mi S. Selins-
grove, PA. Snyder Co., PA
Terms by: Roy S. & Arlene
S Horst Petersheim
Aucts.

THURS. MAR. 31 - 9AM
Full Line of Farm Machin-
ery, Mostly JD Tractors,
Includes JD 4440, 4020,
4000, 3020, 3010 and
Unstayed G & B, JD 5720

NOTICE

To assure that
your Public Sale
appears in the
Public Sale Sec-
tion we must have
your advertise-
ment by 5 P.M.
Tuesday of each
week's
publication.

SAT. MAR. 16 - 8:30AM
Building Materials. Located
6 Mi. SE of Strasburg Along
Rt. 896 N. of Georgetown.
Food Service Women
Auxiliary Home-Cooked
Food. Bart Township Fire
Co.



AUCTIONEER'S DIRECTORY

**DEALER IN ALL KINDS
OF LIVESTOCK**

Also Crippled & Down Cattle

MARLIN S. IRWIN

Quarryville, PA
PH: 717-786-3016

SP Harvester. 13 Mi.
South of Lancaster on Rt
272. Terms by: Robert &
Donna Kreider. Bucher &
Bachman Aucts.

SAT. MAR. 30 - 9AM Farm
equip, 661 Orwig Rd, Stew-
ardstown, Pa. I-83 to Exit 1,
E on Rt. 851 2 mi. to Saw-
mill Rd. turn L approx. 1/4
mi. to Orwig Rd, turn R sale
on left. Kenneth Keenyt
Auct.

SAT. MAR. 30 - Mrs. Carl
Hall Will Sell Farm Equip-
ment. Located 1 1/4 Mile
South East of Middleburg,
PA. Ken Smith & Dennis
Hassinger, Auctioneers.

SAT. MAR. 30 - Farm
Machinery. Held at Cham-
bersburg, PA. Owner:
Robert Hock. Sale by:
Kling's Auctions, Inc.

MON. APR. 1 - 10AM Red
Creek, NY. Blizzard Date
April 3. Albano Farms
Complete Dispersal of gen-
eral and specialty crop
machinery. Pirrung Aucts.

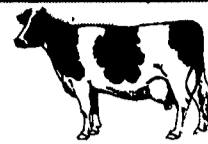
APRIL

**Professional
AUCTIONEERING
MARTIN AUCTION SERVICE**

410 W. Church Rd.
Ephrata, PA 17522
(717) 733-3511
Real Estate • Farm Equipment
• Antiques • Household Goods
It doesn't cost to use our Auction Service...It Pays
CALL TODAY!!

Dairy and Livestock Sales

**NEW HOLLAND
SALES STABLES, INC.**



New Holland, Pa.
Located 12 Miles East of Lancaster, just off Rt. 23

DAIRY SALE WEDNESDAY, DEC. 6
OPEN AND BRED HEIFERS 11:00 A.M.
MILK COWS AND SPRINGERS 12:00 NOON

SPECIAL CONSIGNMENTS

From John K. Stoltzfus, Lewisburg, Pa.

- 16 Registered Cows and 10 Registered Open Heifers.
- All AI Bred to Red Factor Bulls.
- 2 EX cows selling - Helium Dau. 23,205M due Dec., Pine Hurst Rouge Red due April 21,440.
- 3 VG cows all over 20,000 milk, 1 fresh milking over 100 lbs.
- 9 animals in this group are 1st and 2nd lactation.
- 10 nice open heifers Sired by Logic - Beltone and other popular AI Bulls.

Fresh cows for Merl Breneman, Marvin Eshleman, Dale and Jim Hostetter.

Several local fresh cows and 1st calf heifers.

Sales Managed By

New Holland Sales Stables, Inc.

Barn 717 351 1311 Fax 355 0706 Home 717 397 5638
Norman & David Kolb, Mgrs. 61L

Office:
717/291-1542

Residence:
717/354-9534

JACK DELP

Certified General Appraiser
Specializing in Farms & Land

148 East Boad Street
New Holland, PA 17557

HFA HORNING

Farm Agency, Inc.

Courteous Real Estate Services
Professional Auctioneers
State Certified Appraisers
Specializing in Farms and Land
Alvin Horning, Broker
Route 23, Morgantown, PA
(610) 286-5183



John D. Stauffer

Auctioneers

1484 Mountain Road, Manheim, PA 17545

Fulltime Courteous Professional Auction Service
Since 1976

Real Estate • Farm Equipment • Antiques
Personal Property • Livestock
Phone 717-665-5099

**ROGERS
COMMUNITY AUCTION
INC.**

**PLEASE NOTE
NEW SALE TIMES!**

Located 8 Miles East Of
Lisbon, Ohio Or One Mile West Of
Rogers, Ohio On St. Rt. 154.

FRIDAYS

Produce, Egg, Miscellaneous Auction
Starts At 6 P.M.

Poultry Auctions Start At 6 P.M.

Doors Open At 7:30 A.M.

To Accept Consignments

Open Air Market All

Day And Evening

Doors Open At 7:30 A.M. To Rent
Market Spaces. Over 2.5 Miles Of
Outside Concessionaries And 30,000
Sq. Ft. Under Roof.

WEDNESDAYS

Farm Machinery

Consignment Auction

The 1ST WEDNESDAY EVENING
OF EACH MONTH

at 3 P.M. sharp.

We are open the preceding Tuesday of
each sale day to check in consignments
from 8 A.M. to 8 P.M. Handling farm
machinery, lawn and garden equipment,
tools, fire wood, cut lumber and related
miscellaneous items. Five auctioneers
operating simultaneously

Hay And Straw Grain

EVERY WEDNESDAY

selling truck

load lots by the bale or ton

starting at 1 P.M.

Barn Opens at 8 A.M. to Consign

Jim and Ken Baer

Auctioneers and Managers

Phone (216) 227-3233 or (216) 227-3236

"Sales Every Week Since 1955"

**SEASON'S
TREATINGS**

**MILFORD NISSLEY COMPLETE
DAIRY HERD DISPERSAL
200 HOLSTEINS**

Thurs., Dec. 7th, 1995
10:00 A.M.

(Blizzard Date - December 9th)

Located in Union County: From Mifflinburg take Route 104 South approx.
2 Miles to Crossroads - Take White Spring Road West approx. 3 Miles to
Farm - Watch for Sale Signs.

Auction due to Milford Nissley's untimely death in a farm-related Accident.

HERD CONSISTS OF:

80 Milking Animals - 15 Dry Cows - 15 Springing Heifers - 15 Heifers now being
bred - 30 Yearling Heifers - 20 Six to Eight Mo. Heifers - Balance Smaller Calves.

Calfhooed Vaccinated Herd. Milking Parlor & Free Stall Trained. DHIA Records

- Rolling Herd Average: 19,829 Lbs.

Herd Averaging Right at 60 Lb. Per Cow in the Tank, Records now in Progress to

28,000 Lb. Several cows milking over 100 Lbs.

MAJORITY OF ANIMALS SELLING WILL BE SIRE IDENTIFIED

GRADES - A FEW REGISTERED AI BRED: Carry service to Fancy Paul -

R.C. Matt - Indy - Delight - MATHIE - LANC - JAC - MOUNTAIN - THOR -

CONTINENTAL - and others.

This is a completely Home Raised Herd with approx. 70 Head of the milking ani-
mals now in their First and Second Lactation.

YOUNG HERD - GOOD UDDERS - GOOD FEET AND LEGS

CATALOGS AVAILABLE DAY OF SALE

30 DAY BLOOD AND TB TEST, EVERYTHING VACCINATED FOR

SHIPPING FEVER COMPLEX.

ALSO SELLING: 10,000 Bu. of Shelled High Moisture Corn in Harvester Silo

- 400+ Ton of Good Alfalfa Haylage - 400+ Ton of Corn Silage - Agway Breed-
ing Wheel - New Wic Bedding Chopper - Semen Tank & Some Semen - Misc.

Milk House Supplies.

Owner:

MRS. MILFORD (MARIAN) NISSLEY

R.D. #1 MIFFLINBURG, PA.

Lunch by: Community Mennonite Fellowship

For Information on Dairy Call: Paul Neer - 717-935-5608 Pedigrees.

Reed Luce - 814-926-2570 Auctioneer

Art Kling - 717-789-3883 Auctioneer

Sale Managed By:



Kling's Auctions, Inc.
R.D. 1, Box 66
Landsburg, Pa. 17040 •
Pa. Lic. #0500 • 717 789-3883

REAL ESTATE PERSONAL PROPERTY

AUCTIONEERS

Complete Auction Service

John Stoltzfus 610-593-6680 J D Fisher 717-442-4167 Miles Schuman 610-347-0511

Conducted by H&H Auction

610-384-7647



KREIDER, KLINE & GOOD

COMPLETE PROFESSIONAL AUCTION SERVICE

REAL ESTATE - FARMS & RESIDENTIAL

PERSONAL PROPERTY - ANTIQUES -

FARM STOCK SALES - LIQUIDATIONS

RANDAL V. KLINE LLOYD H. KREIDER

AUCTIONEER-REALTOR AUCTIONEER

717-733-1006 717-786-3394

ROY E. GOOD, JR.

AUCTIONEER

(717)445-4309

Real Estate/Farms Appraisals

Joseph Felice

Auctioneer

"The Sound That Sells"

(610) 358-1388

AU-002556-L

Machinery

Estates