



Magical Mechanical Marvels

DOVER, DE—The Delaware Agricultural Museum and Village is turning into Santa's toy shop this holiday season with a special exhibit of antique mechanical toys, Magical Mechanical Marvels. These wonders of turn-of-the-century toy technology will be on display at the Museum from November 24 to the end of the year. Selected from the Museum's collection as well as other institutions and private collections, these playthings will delight the child in all of us.

See toys for all ages and from a wide span of time including the

1880s and going through the 1940s. Discover what we've lost to our modern batteries, electronics, and plastics through these ingenious, kid-powered toys. No batteries, no chips, only fun and imagination!

The Delaware Agricultural Museum and Village, a private, non-profit organization, is located just south of Delaware State University on Rt. 13 in Dover. Admission is charged. Information on this exhibit and others at the Museum is available by calling (302) 734-1618.

Christmas In Lititz Tour

LITITZ (Lancaster Co.) — Christmas in Lititz Tour of Homes will be held Saturday, December 9, from 10 a.m. to 4 p.m. Eight area homes are open for tour. Each is decorated by local floral designers.

Tickets in advance are \$6, on the day of the tour, \$7. For tickets, call (717) 626-4588.

Joyce and Robert Bomberger Sr. live in a two-story farmhouse style house at 190 Bomberger Rd. Although the home was built in 1992, it uses many materials from the past. Throughout the house are log beams, windows and doors saved from Grandpa Bomberger's house. The extra wide door into the master bedroom was the back door of the old house. With close observation you will see a hobo's drawing of a young maiden's profile. Also notice the window sections built into the wall of the office.

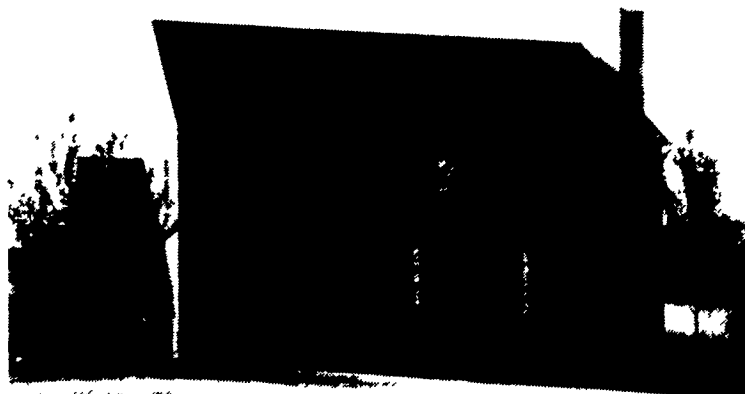
In the kitchen breakfast nook notice the ceiling boards, these were taken from the dining room

and are just as they were years ago. The dining room floor is boards from the attic, the widest board is 21 inches. Original light fixtures are also throughout the house.

Every room has a piece of furniture made by Joyce's father, a retired woodworker. Every room

contains special points of interest from the braided rug made by Bob's great grandmother Emma about 75 years ago, to the wine set in the dining room, a wedding gift to Great Grandma Emma.

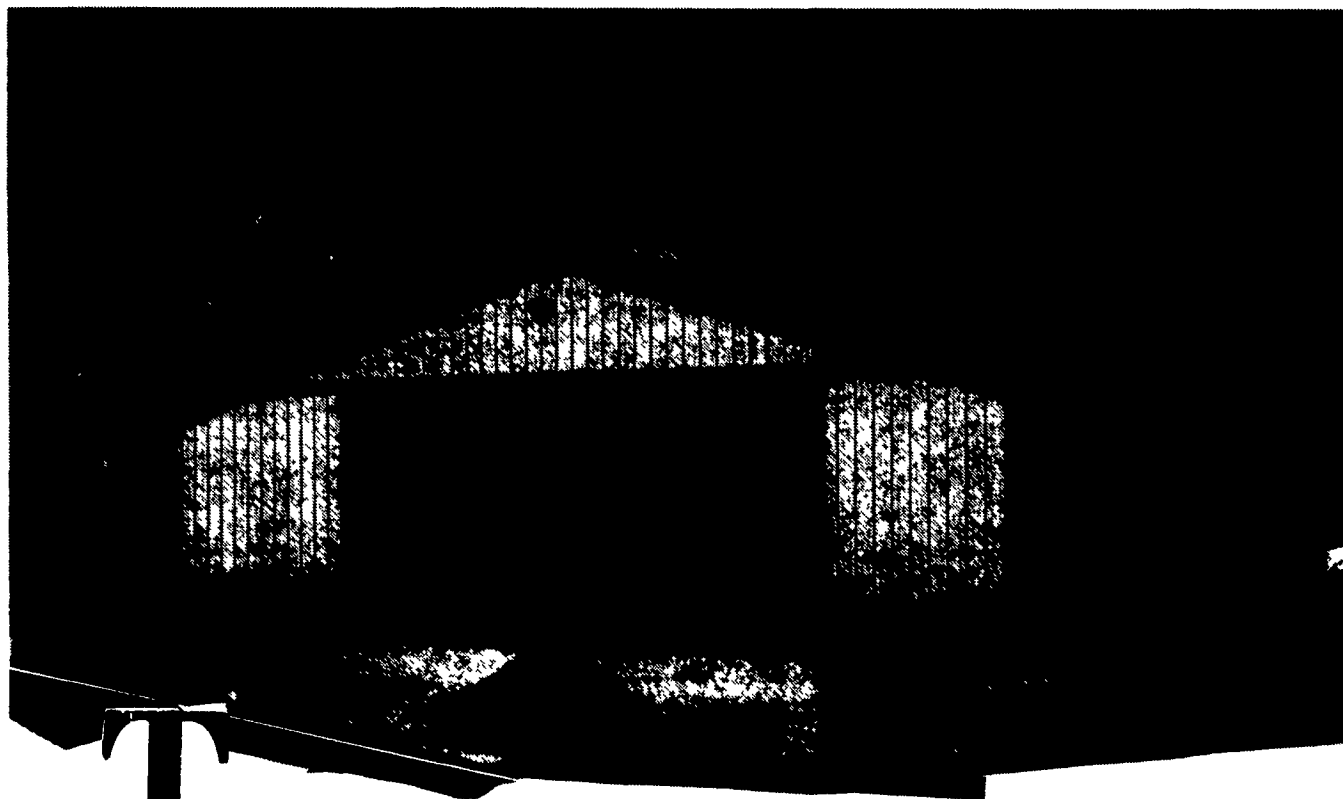
Holiday decorations are by Rhoda Oberholtzer.



Inside the Bomberger home, open for tour, are unusual doors, floor boards, and lights preserved from previous generations of the family.

PLANNING TO BUILD?

BUY NOW AND SAVE WITH OUR "WINTER WORK" PRICES. PLUS WE'LL PAY YOU \$500 IN 1995 IF YOU PREPARE A LEVEL BUILDING SITE BY DECEMBER 31, 1995!



That's right! If your plans for 1996 include a new building of any kind, call Morton

Buildings now! Simply prepare a level building site by December 31, 1995 ... for

construction in 1996 ... and Morton Buildings will pay you \$500! What's more, you'll avoid

anticipated 1996 price increases. And to fully appreciate what that could mean, just take a

look at what lumber prices have done the last two years!

Take advantage of low winter prices and order now!

CONTACT:

717/624-3331
3368 York Rd.
Gettysburg, PA 17325

908/454-7900
P.O. Box 126,
Phillipsburg, NJ 08865

800-447-7436
MORTON BUILDINGS
P.O. Box 399, Morton, IL 61550
© 1994 Morton Buildings, Inc.



LONG DISTANCE
PHONE SERVICE
ONLY 7¢ cents/
minute within USA
Business & resident use
No sign up costs
No minimum usage
Tel-Com
Phone Service
Lebanon, Pa.
Sales People Wanted
Call 1-800-222-4495



HERNIA?

No hernia is unrepairable, even after several previous failed attempts. We specialize in outpatient hernia repairs, and most patients are able to return to full work with-in several days.

PLEASE CALL COLLECT OR WRITE FOR MORE INFORMATION
MID ATLANTIC SURGICAL SERVICES

217 Harrisburg Ave., Suite 201
Lancaster, PA 17603
(800) HERNIA 8
MOST INSURANCE ACCEPTED

NEED YOUR FARM BUILDINGS PAINTED?

Let us give you a price!

Write:

Daniel's Painting
637-A Georgetown Rd.
Ronks, PA 17572

(or leave message)

(717) 687-8262

Spray on and Brush
in Painting