

# Young Farmer



## News

for public opinion, which will result in the constant improvement and upgrading of young-adult farmer instruction through the public school system.

The Young Farmers Association, through participation, can be an excellent means of providing training to men and women in agriculture of all ages, who can become a source of directors and officers for new and existing farm organizations and agricultural businesses.

(Continued from Page A24)

continued their membership. The total adult program became the responsibility of the regularly employed teachers of agriculture.

Regional leadership training meetings were started in 1955. The next year, six regional vice presidents were elected to supervise and promote activities of local associations. In 1957, the State Outstanding Young Farmer awards were established.

As an integral part of the public school program in vocational agriculture in Pennsylvania, young-adult farmer classes increased to an all-time high in 1969.

In 1969, there were 92 schools offering systematic instruction to 3,600 men. Fifty of those 92 schools in that year were state-

affiliated local units of the PYFA.

In 1960, the annual state convention was changed to the Wednesday following Thanksgiving Day and was held at The Pennsylvania State University. The change resulted in a very large increase in attendance of members and wives.

The success of the 1961 convention may be credited largely to the planning efforts of the special convention committee, to the effective leadership of the executive committee, to better publicity provided by timely issues of the Young Farmer magazine, and certainly to the stronger local Young Farmer associations across the state.

The annual convention is currently held in February.

Looking to the future, the YFA can very well serve as a medium

### 1996 Convention

The 36th PYFA winter convention is scheduled to be held Feb. 6-8 at the Somerset Ramada Inn (Exit 10 off of the Pa. Turnpike).

Three chapters — Berlin Brothersvalley, Meyersdale, and Rockwood — are serving as hosts for the convention.

Tour are scheduled to be held Feb. 6 and Feb. 8, while Feb. 7 has been reserved as the day for the annual business meeting and educational workshops.

A breakdown of the five meals over the three days and a Wednesday Ladies Luncheon, Tour and Workshop is included on a registration form.

There is a discount for early registration fees which cover the costs of the five meals. The Ladies' Luncheon, Tour and Workshop is \$15.

To receive the \$2 per event early registration discount, make reservations by Jan. 12. Regular registration is due by Feb. 2.

Those registering should also make note to indicate in the appropriate place on the form which tour(s) are being requested.

All who go on the tours should know ahead of time that they will be required to ride a bus (provided free).

To make a reservation at the

Ramada, call (814) 443-4646.

Other local motels (all 814-area code) include the Holiday Inn at 445-9611, Knight's Inn at 445-8933, Days Inn at 445-9200, Super 8 Motel at 445-8788, the Economy Inn at 445-4144, or the Bayberry Inn Bed & Breakfast at 445-8471. (Turn to Page A27)



## YOUR COMPLETE FARM AND HOME CENTER

If We Do Not Have It, WE'LL GET IT

### HEAT LAMP BULBS - ON SALE!

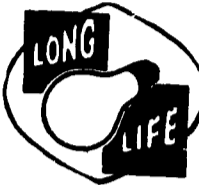
SKU	WATT	CASE	BY THE CASE
000940	125W Clear	120	\$1.49 ea.
03008	250W Clear	120	\$1.49 ea.
030640	250W Red	120	\$3.51 ea.



### HEY, POULTRYMEN!

### LONG LIFE LIGHT BULBS - 5000 HRS!

SKU	WATT	CASE	BY THE CASE
60006	25	120	37¢ ea.
60008	40	120	37¢ ea.
600100	60	120	37¢ ea.
60012	75	120	37¢ ea.
60014	100	120	37¢ ea.



### SNOW & MUD CHAINS

For Farm Tractors, Auto/Truck, Lawn & Garden



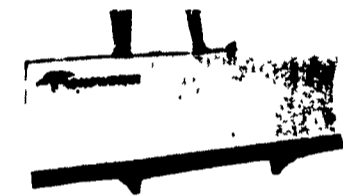
### PIG HEAT LAMPS

Heavy duty aluminum reflector complete with hanger and double-wire guard. High heat porcelain socket with 18/2 SVT UL listed cord (round vinyl). 9' cord Reg \$5.99 Ea. **SALE \$5.99 ea.** By Case of 10



## SNOWBEAR & Meyer PLOWS

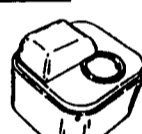
As Low As \$1,299<sup>00</sup>



- Installation Available
- 90 DAYS SAME AS CASH

### MiraFount

THE ORIGINAL ENERGY FREE WATERER... COPIED BUT NEVER EQUALLED



**2 HOLE MIRAFOUNT**  
20 Gal. Capacity  
Capacity 150 head beef, 80 head dairy, 2-8" opening No 3465

**1 HOLE MIRAFOUNT**  
15 Gal. Capacity  
Capacity 50 head beef, 25 head dairy, 30 horses, 1-8" opening No 3380

★Full Line Parts Dept.★  
★Sell, Service & Install★

Rt. 272 South  
14 Herrville Road  
Willow Street, PA 17584  
Ph. 717-464-3321 or  
Toll Free 800-732-0053

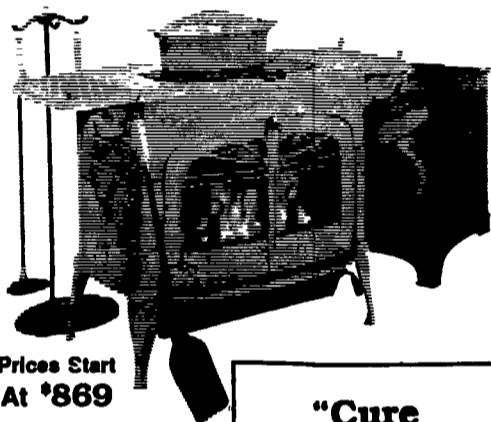


UPS Shipping Point



Store Hours:  
Mon.-Sat. 7:30 AM to 8:00 PM

## VERMONT CASTINGS



Prices Start At \$869

- Wood, Coal & Gas Stoves
- Fireplace Accessories

"Cure For The Common Cold"



906 E. Main St. (Rt. 322) Ephrata, PA  
1 Block East of Rt. 222  
(717) 733-4973 1-800-642-0310

Mon., Tues., Wed. 10 to 6; Thurs., Fri. 10 to 8; Sat. 10 to 4

## Multi Fuel Furnaces & Boilers

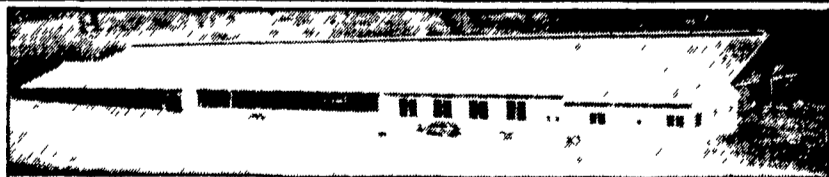
Wood, Coal & Oil



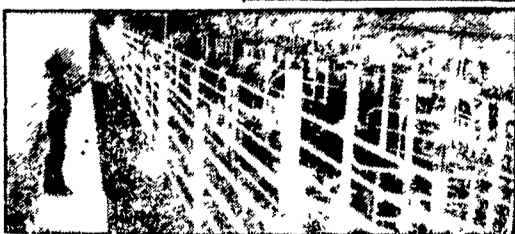
Also Outdoor Boilers wood & coal models  
**PENN MFG. CO.**

393 W. Lexington Rd., Lititz, PA 17543  
Call (717) 626-1397 or 627-2303

## AGRI-INC. Custom Built Farm Buildings Designed To Your Needs



DAIRY COMPLEX



INTERIOR OF PARLOR

Let Our Experience Work For You

- Site Layout
- Building Design
- Construction

- Dairy Complexes And Replacement Stock Facilities
- Horse Stall Barns And Riding Arenas
- Workshop And Machinery Storage Buildings
- Timber Column Building For Light Commercial



Serving The Agriculture Industry For Over 25 Years

151 E. Farmersville Road, Ephrata, PA 17522 • (717) 354-4271



"A strong, prudent board of directors challenges management and staff to seek the greatest return on our investment in ADC, creating the highest net return to its members back on the farm."  
—Richard & Janet Krubel  
Benton, PA

## ADC Is the Place To Be

A high net return and a strong board of directors — the outstanding benefit that Richard and Janet Krubel have realized — is the result of the premier dairy cooperative in the world, Atlantic Dairy Cooperative. With a 73-year history of excellence, ADC is a financially strong, ADC guarantees a high net return to its members, and provides maximum returns. ADC is a leader in providing equity payments, quality housing, and other premiums to its members.

Nearly 400 dairy farmers agree that ADC is the Place to Be. For free information on how you can secure the future of your dairy farm operation, write or call:

Atlantic Dairy Cooperative  
1225 Industrial Highway  
Southampton, PA 18966  
1-800-645-MILK

