

★ ALLWOOD STRUCTURES ★
POLE BUILDINGS



| STANDARD BUILDINGS | | LOFT BUILDINGS | |
|--------------------|----------|----------------|----------|
| 24x32x8 | \$4,800 | 24x32x8 | \$9,550 |
| 24x40x8 | \$6,000 | 24x40x8 | \$11,100 |
| 30x40x8 | \$7,500 | 30x40x8 | \$13,800 |
| 32x64x10 | \$11,800 | 32x64x8 | \$19,100 |
| 40x80x12 | \$17,300 | | |

ERECTED PRICES (Includes slider and service door)
We specialize in: Horse Barns, Riding Arenas, Garages, Machine Sheds or Custom Built To Your Specifications
CALL FOR FREE ESTIMATE AND BROCHURE
1-800-247-0241

Special: White Pine Boards 1x6, 1x8, 1x10, 1x12. Kiln dried, \$49, 65¢/board ft. Call now. Berks County, (610)779-8022.

STEEL BUILDINGS, all types and sizes. Call for current "Specials". 410-667-8310.

4 BUILDINGS AND SUPPLIES

BUILDING OWNERS DON'T TEAR THEM DOWN WE CAN REPAIR THEM. ROOF COATING A SPECIALTY CALL TODAY!



WOODFORD BROS., INC.
1-800-443-9933
WE GO ANYWHERE

— NOVEMBER SPECIAL —
30x40x8 pole barn \$6,300
40x60x10 pole barn \$10,999
Above prices include 1 walk-in door 1 sliding door - choice of colors - Sales tax & delivery - other sizes available

Also Specializing In:
Reroofing Barns - Garages - Siding Barns

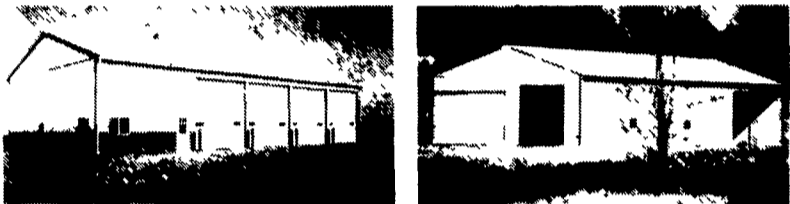
WAGLER BUILDERS

Post Frame Specialists
We build new buildings and make old ones look like new. Satisfaction Guaranteed!
Free Estimates
Leola, Pa (717) 656-0138 or (717)940-3258

Conestoga Buildings Inc.



Pole Barns



Commercial

Agricultural



Residential

Municipal

- Complete Building Packages
- Erected or Build Your Own
- Free Estimates or Brochures

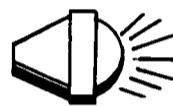
1-800-544-9464 (717)354-2613



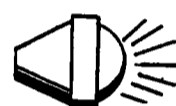
Equipment Sheds



Horse Barns

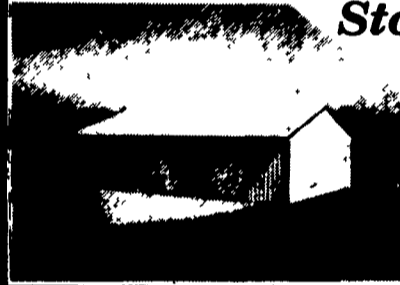


Garages



Arenas

Stoltzfus Builders

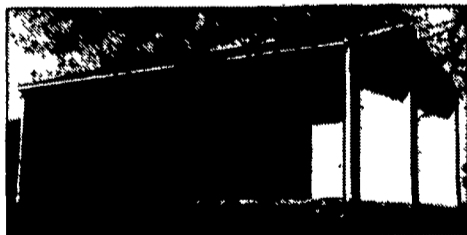
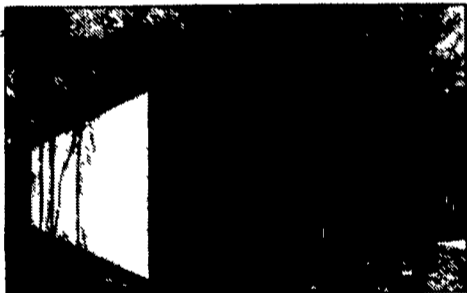


50 North View Rd.
Lititz, PA 17543
Free Estimates
Call Anytime

717-664-3540
1-800-551-7724



Side with Alumax ALU-TUFF Steel



When you put up a building, you expect it to be attractive and to last. A building constructed with ALU-TUFF will meet those expectations. That's because ALU-TUFF is made using top-quality materials, super-tough protective coatings, and a unique rib design that's both functional and attractive.

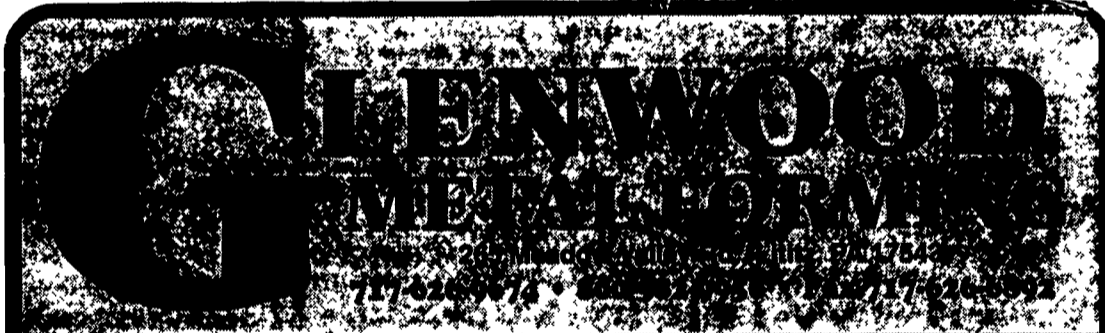
Years from now when other buildings are starting to show their age, your building will still look good.

- **A STRONG PROFILE**
High 3/4-inch ribs on nine-inch centers give ALU-TUFF exceptionally high spanning properties for its weight and thickness, while stiffening ribs in flat areas prevent rippling.
- **MADE TO LAST**
To keep Alu-Tuff working hard and looking good for years to come, we protect it with an oven-cured system of four different coatings.
- **A GREAT LOOKING PANEL**
You don't have to sacrifice good looks to get a tough steel panel.
- **MORE QUALITY FEATURES**
Each ALU-TUFF sheet is 38 inches wide to provide 36-inch coverage. That's wide enough to minimize the number of side laps, yet narrow enough to be easy to handle.

CALL FOR SPECIAL DISCOUNTS



717-776-5951 506 STEELTOWN RD. - NEWVILLE, PA 17241



We Now Offer The Most Popular Panel In The Agriculture Industry!

13 Colors • 29 Gauge

This panel is made by another manufacturer.
13 delightful colors - Galvanize - Galvalume
And .018 mill finish aluminum



We manufacture Roofing & Siding - Cut To Length

- 29 Gauge - galvanize, galvalume & 7 colors painted
- 26 Gauge - galvalume & painted white
- .024 Mill Finish Aluminum
- 29 Gauge & 26 Gauge Stainless Steel (Secondary)

- 24 Gauge Standing Seam - Commercial & Residential
- 5" & 6" K-Style Aluminum Seamless Gutter - 32 Colors
- Pre Hung Doors & Windows For Ag Buildings
- Sliding Door Tracks, Hardware & Framing
- Roofing Nails & Screws