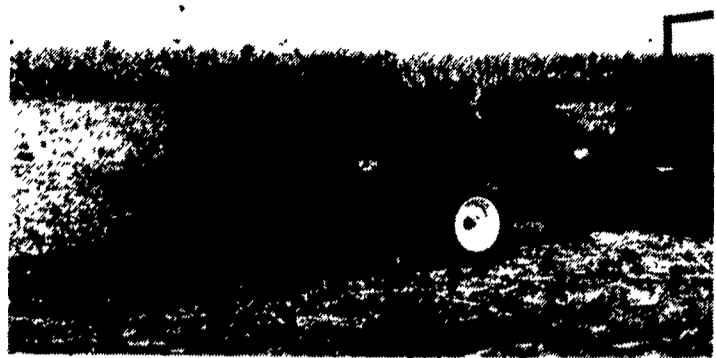


# At Last... A Line Of Manure Spreaders Designed For The Low-Input Farmer.

Affordable and well-built, but no extra frills design. Made for the way you work.



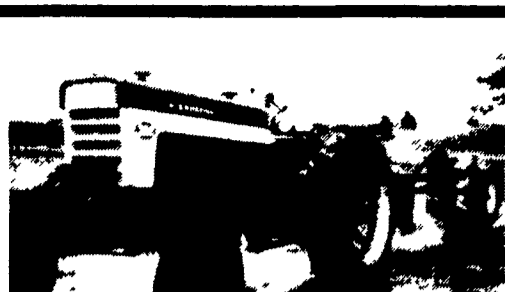
- 7 Sizes available from 25 to 128 bu.
- Ground Drive or PTO.
- High-Density polyethylene floor comes with 20 year warranty.
- Prices start under \$1,000 (plus freight)

If you're in need of a manure spreader but can't justify spending \$4,000 for one, then call us now for a free brochure and price list.

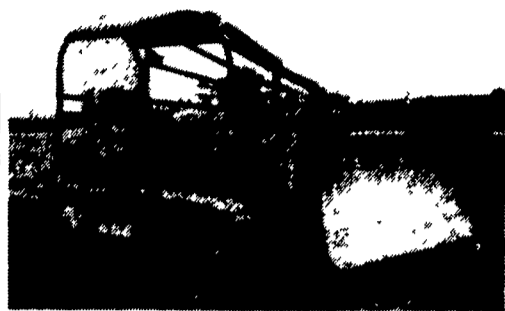


2617 Stumpton Rd., Dept. LF  
Bird-In-Hand, PA 17505  
(717) 656-3050

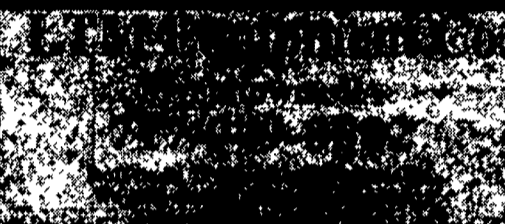
Dealer Inquiries Invited



**International 560**  
60 hp. gas; T.A., P.S., 3000 hours, w/4 bottom plow  
**\$3,500**



**JD 350 Dozer**  
rebuilt diesel, excellent U/C  
**\$5,800**



**Larry L. Adair**

Find Out About The Advantages Of Bulk Oil Bulk Buying Available

Ph: (800) 755-OILS  
(800) 755-6457  
(717) 246-9741  
Call Early Morning Or Late Evening

R.D. #12, Box 234-D  
Gun Club Rd.  
York, PA 17406

Quality Lubricants Since 1978

55 Gal. Drum Delivered Free 50 Mi. Radius From York, PA

**Amalie XLO:**  
**Recommended by some of the biggest cranks in the Nation.**

From mammoth earth-moving machines to light trucks, the first choice for equipment protection is Amalie XLO Fleet Oil, Amalie Hydraulic Oils and Amalie greases and gear lubricants

## STOUFFER BROS. INC.

1066 Lincoln Way West, Chambersburg, PA  
Phone 717-263-8424

### FORAGE

- |                                 |                       |
|---------------------------------|-----------------------|
| Gehl 1250 w/3 Row head & Pickup | JD 125 Box            |
| IH 550 Harvester                | GEHL 610 Forage Box   |
| Gehl 1580 Blower                | NH 770 w/2 Row Pickup |
| "Like New"                      | Gehl 820 Forage Box   |

### MOWER CONDITIONERS

- |  |                                |
|--|--------------------------------|
| Hesston 6200 Self-Propelled 12 Ft. Very Good Condition | Hesston 1150 Mower Conditioner |
| NH 495 Haybine   | Vicon 321 Disc Mower           |

### SKID LOADERS & UTILITY

- |                                  |                           |
|----------------------------------|---------------------------|
| Case 580K 4WD/Ext-Hoe            | Case 1450 Crawler/Loader  |
| Case 1845 Skid Loader            | (2) Gehl 4610 Skid Loader |
| Owattoma 440                     | Case 450B Crawler/Loader  |
| Case 580E Backhoe, 4WD, Ext. Hoe | Case 1816 Skid Loader     |
| Case 580E 2WD/Std.Hoe            | Ford 555 Std. Hoe         |

### MISCELLANEOUS

- |                              |                         |
|------------------------------|-------------------------|
| Oliver 62T Baler w/ Thresher | IH 400 Cyclo Planter    |
| IH 11 Shank Chisel Plow      | GEHL MX95 Grinder/Mixer |
| Vicon 2 Wheel Turner         | NH 357 Grinder/Mixer    |

### TRACTORS

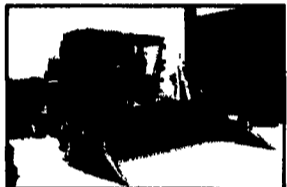
- |                  |                             |
|------------------|-----------------------------|
| David Brown 1212 | Case 1490 Tractor w/ Loader |
| Ford 4000        | Ford 850D Tractor           |
| JD 4010 Tractor  | Ford 9N Tractor             |

### LAWN & GARDEN

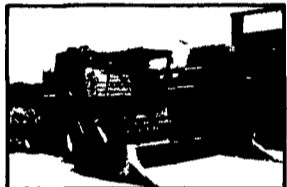
- |   |   |
|---|---|
| Sears Craftsman LT 4000 Mower             | IH Cub Cadet 682 Mower w/44" Mower      |
| Kubota B1550 dt w/Loader                  | IH 382 Mower Cub Cadet 1200 w/42" mower |
| White Field Boss 16 Tractor w/Attachments | Cub Cadet 1200 Mower                    |
| Ingersoll 220                             | Kubota B1550 w/Loader                   |
| Ariens Rider                              | Ariens GT16 Tractor Mower               |
| Ingersoll 222 Tractor                     | IH Cub Cadet 782 Mower w/44" Mower      |
| Trac Vac 580 (grass collection cart)      | Case 446 Tractor/Mower                  |
| Wheelhorse GT2500 Mower                   | Coming In:                              |
| Kubota B7100 Dual Loader                  | Kubota G1900 Tractor/Mower              |

Sales, Parts & Service For... CASE UTILITY • GEHL • VICON • WFE • KUBOTA • HESSTON • SAME

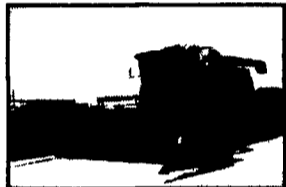
# 50 YEARS OF CUSTOMER SATISFACTION



(FW) JD 6620, w/ 643 Corn & 915 Heads . . . . . \$79,995



(FW) 1988 JD 7720, 6 Row, 30", 915 Head, 1,679 Hrs. . . . . \$75,000



(FW) 1991 JD 9600, w/ 643 Corn & 920 Grain Chopper . . . . . \$92,500



(FW) 1990 Case IH 1660, w/ 6 Row, 1063 CH & 15' Flex . . . . . \$79,995



(FW) 1985 JD 6620 SH, w/643 & 215 Heads . . . \$64,900



(FW) 1979 JD 301A w/6' Side Mounted Sickle Bar Mower, 1,651 Hrs., PS, 3 Pt. . . \$6,995



(FW) JD 2755, 3 Remotes, Cab, 8 Position Wheel, 1,830 Hrs. . . . . \$27,000



(FW) Kubota 5450, w/ BF1100 Loader, L5412 Backhoe . . . . . \$31,900



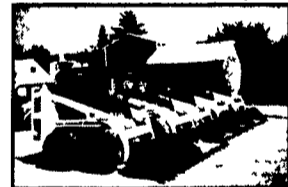
(FW) Haybuster 718, 10' No-Till AI . . . . . \$8,900



(FW) NH 553 w/Low Profile Bkt., 2,000 Hrs., Gd. Cond. . . . \$13,700



(FH) JD 9600, w/918 Flex & 643 Head. . . . . \$118,000



(FH) Bobcat 643/743, (6) (5) To Pick From Start At \$8,995

## MOWER CONDITIONERS

- |   |                               |
|---|-------------------------------|
| (FW) Finch Westminster (FH) NH 489 . . . . . <b>SOLD!</b> . . . . . \$5,895 | (FH) JD 485 . . . . . \$1,095 |
|---|-------------------------------|

## TRACTORS

- |  |   |
|--|---|
| (FW) JD 2155 w/ Triumph Sickle Bar Mower . . . . . \$16,200              | (FW) JD 2755, (3) Remotes, Cab, 8 Position Wheel. \$27,000        |
| (FW) JD 2355 GP, (1) Remote, Canopy, 8 Position Wheel . . . . . \$16,400 | (FW) JD 2755, (3) Remotes, Cab, Rack & Pinion . . . . . \$26,900  |
| (FW) JD 2355 GP (1) Remote, Canopy . . . . . \$16,400                    | (FW) JD 2755, Cab Hi/Lo . . . . . <b>SOLD!</b> . . . . . \$26,900 |
| (FW) JD 2755 Tractor, Cab TSS . . . . . \$23,000                         | (FW) 1983 JD 2350, 4,635 Hrs . . . . . \$13,500                   |
| (FW) JD 2755 Tractor, Cab TSS . . . . . \$23,000                         | (FW) 1980 JD 4440, 4,590 Hrs . . . . . \$25,900                   |
|  | (FW) I-H Super "A" w/Cult., Plow, Mid-Mower . . . . . \$3,295     |
|  | (FH) Ford Ind 3500 w Loader . . . . . \$6,895                     |

## COMPACTS

- |   |   |
|---|---|
| (FW) 1985 JD 1050, P/S, MFWD, Model 75 Loader. \$14,900   | (FW) Cub w/Plow & Rotary . . . . . \$2,995                    |
| (FW) 1981 JD 1050, 2 WD, P/S, Canopy, 2,203 Hrs. \$10,500 | (FH) Mitsubishi 250, 4WD, w/Loader . . . . . \$8,995          |
| (FW) 1991 Case 1140, ROPS, Hydro Turf, 499 Hrs. \$11,500  | (FH) Kubota B6100, 4 WD, Just Traded . . . . . Call For Price |

## MISCELLANEOUS EQUIPMENT

- |   |   |
|---|---|
| (FW) NH 890 Harvester, w/880W Pickup Attachment \$3,295                               | (FW) Rhino, 10', 3 Pt. Hitch, Laminated Wheels . . . \$4,500          |
| (FW) AMT622 Utility Vehicle . . . . . \$3,995   | (FW) JD 336 Baler w/30 Ejector . . . . . \$3,995                      |
| (FW) AMT626 Utility Vehicle . . . . . \$3,995   | (FW) New JD 335 Round Baler . . . . . \$11,595                        |
| (FW) NH 325 Skid Steer, Kohler 20 HP, Air Cooled Engine, 60" Bucket . . . . . \$6,995 | (FH) Killbros Gravity Bin, w/ Gear Wagon . . . . . <b>SOLD!</b> \$795 |
| (FW) NH 445 Skid Steer . . . . . \$6,995  | (FH) Gravity Bin, w/ JD Gear Wagon . . . . . <b>SOLD!</b> \$695       |
| (FW) JD 14T Baler. . . . . \$195  | (FH) McCurdy 12' Hyd. Auger . . . . . \$695                           |
| (FW) NH 327 Spreader . . . . . \$495  | (FH) JD F125 3 BTM, 14" Plow . . . . . \$895                          |
| (FW) JD 46A Loader. . . . . \$2,295   | (FH) JD 251 BTM, 14" Plow. . . . . \$695                              |
| (FW) JD FBB Drill 15x7 . . . . . \$495  | (FH) JD 662 Rake. . . . . \$2,995                                     |

**FINCH SERVICES**

WESTMINSTER, MD

H/S

Carroll County - ONLY Full Line, Full Service John Deere Dealer

(410) 848-7211 • (410) 876-2211

**FINCH SERVICES**

HANOVER, PA

515 Frederick St. (In the alley)

SALES • SERVICE

PARTS • RENTALS

(717) 632-2345

## 2 FARM EQUIPMENT WANTED

36-48" pallet fork for NH new-style skid loader. (717)627-1623.

Used 30" auger complete for NH 555, 1990; 1000' chain link fence, 6' high 215-233-1302.

4WD loader, 3/pt.hitch, 40-50hp (+or-) Case 84 hydro or Kubota GST/GSTC. May be older if clean. Also, finish mower, 6-7'. (215)674-2424 or (215)674-3536.

Used sprayer, 3pt, air blast for vineyard work. Call weekdays 9-5. (717)291-5111.

**WANTED:**

**USED FORD & KUBOTA TRACTORS**

Call 717-949-2000

Daytime