

Estimated Daily Livestock Slaughter

Under Federal Inspection
November 21, 1995

	CATTLE	CALVES	HOGS	SHEEP
WEDNESDAY (EST)	134,000	6,000	366,000	18,000
WEEK AGO (EST)	129,000	6,000	353,000	16,000
YEAR AGO (EST)	124,000	6,000	364,000	18,000
WEEK TO DATE (EST)	269,000	11,000	733,000	34,000
SAME PD LT WK (EST)	243,000	11,000	704,000	33,000
SAME PD LT YR (ACT)	255,000	12,000	728,000	32,000

PREVIOUS DAY ESTIMATED STEER AND HEIFER...106,000. COW AND BULL 29,000.

***REVISION ON TUESDAY'S HOG SLAUGHTER...367,000.

SOURCE: USDA MARKET NEWS, WASHINGTON, D.C.

**Central U.S.
Carlot**

Pork Report

November 21, 1995

Report supplied by USDA

COMPARED TO MONDAY'S 3 P.M. CLOSE: FRESH LOINS 2.00-3.00 HIGHER; BUTTS 1.00 HIGHER; SPARERIBS STEADY; SKND. HAMS 1.00-2.00 LOWER; SDLS BELLIES WEAK TO 1.00 LOWER; TRIMMINGS STEADY TO 1.00 LOWER. TRADING MODERATE, WITH LIGHT TO MODERATE DEMAND AND OFFERINGS.

83.5 LOADS PORK CUTS
59.0 LOADS TRIM/PROCESS PORK LOINS, REGULAR, FRESH 14-18 LBS., 16.5 LOADS, RANGE 90.00-98.00, WGHTD. AVG. 95.45.
1/2" TRM 14-18 LBS., 3.0 LOADS, RANGE 118.00, WGHTD. AVG. 118.00.
1/4" TRM/LESS 14-18 LBS., 13.5 LOADS, RANGE 113.00-124.00, WGHTD. AVG. 119.78.
COMBOS 22 LBS. AND UP, 1.0 LOADS, RANGE 71.00, WGHTD. AVG. 71.00.

LOIN, BNLS CNTR CUT 5-9 LBS. STRAP-OFF, 3.0 LOADS, RANGE 218.00, WGHTD. AVG. 218.00.
TENDERLOIN 1.25 LBS. AND DOWN 0.5 LOADS, RANGE 333.00, WGHTD. AVG. 333.00.

PICNIC, FRESH COMMODITY 4-8 LBS., RANGE 33.00, WGHTD. AVG. 33.00 E.

BOSTON BUTT 4-8 LBS., 3.0 LOADS, RANGE 54.00, WGHTD. AVG. 54.00.
1/2" TRM 4-8 LBS., 3.0 LOADS, RANGE 72.00, WGHTD. AVG. 72.00.
COMBOS 8 LBS. AND UP, RANGE 57.00, WGHTD. AVG. 57.00 A.

SPARERIB, FRESH 1.5-3.5 LBS., 1.5 LOADS, RANGE 100.00-101.00, WGHTD. AVG. 100.67.
3.5-5.5 LBS., 0.5 LOADS, RANGE

85.00, WGHTD. AVG. 85.00.
SPARERIB, FROZEN 3.5-5.5 LBS., RANGE 92.00, WGHTD. AVG. 92.00 C.

LOIN BACKRIB (BOXED) FRESH/FRZN 1.75-2 LBS., 1.0 LOADS, RANGE 243.00, WGHTD. AVG. 243.00.
HAM, SKINNED, SELECTED FRESH 17-20 LBS., 10.0 LOADS, RANGE 70.00-76.00, WGHTD. AVG. 71.80.

FRESH 20-26 LBS., 11.0 LOADS, RANGE 64.00-68.00, WGHTD. AVG. 66.43.
HAM, SKINNED, COMMODITY FRESH 17-20 LBS., RANGE 73.00, WGHTD. AVG. 73.00 E.
FRESH 20-26 LBS., 9.0 LOADS, RANGE 59.00-63.00, WGHTD. AVG. 60.44.

FRESH 32 LBS. AND UP, 2.5 LOADS, RANGE 56.00, WGHTD. AVG. 56.00.
BELLY, SDLS, SKIN-ON, FRESH FRESH 10-12 LBS., 1.0 LOADS, RANGE 42.50, WGHTD. AVG. 42.50.
FRESH 12-14 LBS., 8.0 LOADS,

RANGE 45.00-46.50, WGHTD. AVG. 45.88.

FRESH 14-16 LBS., 7.0 LOADS, RANGE 45.00-47.00, WGHTD. AVG. 46.21.

FRESH 16-18 LBS., 3.0 LOADS, RANGE 46.50, WGHTD. AVG. 46.50.
FRESH 18-20 LBS., 5.0 LOADS, RANGE 41.50, WGHTD. AVG. 41.50.

PORK TRIMMINGS/ BONELESS PROCESSING PORK (CHEMICAL LEAN) COMBO 42% FR, 16.5 LOADS, RANGE 23.50-28.00, WGHTD. AVG. 25.36.

BOXED 42% FROZEN, 4.0 LOADS, RANGE 32.00, WGHTD. AVG. 32.00.
COMBO 72% FR, 22.5 LOADS, RANGE 41.00-45.00, WGHTD. AVG. 42.19.

BOXED 72% FROZEN, 10.0 LOADS, RANGE 49.00, WGHTD. AVG. 49.00.
BOXED 72% FROZEN, 10.0 LOADS, RANGE 49.00, WGHTD. AVG. 49.00.

PICNIC CUSHION MEAT COMBO 92% FRESH, RANGE 111.00, WGHTD. AVG. 111.00 D.

BONELESS PICNIC MEAT COMBO 72% FR, 6.0 LOADS, RANGE 45.00-48.00, WGHTD. AVG. 46.50.

SHANK MEAT FROZEN, RANGE 63.00, WGHTD. AVG. 63.00 C.

SKINNED JOWLS COMBO FRESH, RANGE 23.00, WGHTD. AVG. 23.00 B.

BOXED FROZEN, RANGE 28.00-29.00, WGHTD. AVG. 28.50 B.
NOTE! (*) REFLECTS 1/2" OR 3/4" TRIMMED PRODUCT BROUGHT BACK TO A REGULAR COMMODITY BASIS.

ABCDE AFTER QUOTES REPRESENTS DAYS SINCE LAST ACTUAL

MARKET TEST. QUOTES ARE DROPPED AFTER 5 DAYS OF NO TEST OR BEFORE IF THEY NO LONGER REFLECT CURRENT MARKET CONDITIONS.

USDA PORK CARCASS CUTOUT WEDNESDAY, NOVEMBER 21, 1995 ESTIMATED GROSS CUTOUT VALUES OF 1 175 LB. HOG CARCASS BASED ON USDA CUTTING YIELD TESTS AND CARLOT PRICES. WEDNESDAY'S CARCASS GRADES AND PRICES PER CWT.:

US#1 61.34, CHANGE FROM TUES.'S VALUE 0.50; US#2 59.60, CHANGE FROM TUES.'S VALUE 0.46; US#3 57.87, CHANGE FROM TUES.'S VALUE 0.43; US#4 56.13, CHANGE FROM TUES.'S VALUE 0.39.

TODAY'S CALCULATIONS FOR US#2 175 LB. PORK CARCASS: SKINNED HAMS, 14-20 LBS., 21.01% OF CARCASS, 71.50 FOB VALUE, -1.50 CHANGE FROM MON.; LOINS, 1/4" TRIM, 14-22 LBS., 20.33% OF CARCASS, 110.00 FOB VALUE, 4.00 CHANGE FROM MONDAY.

BELLIES, SDLS., 12-14 LBS. 13.90% OF CARCASS, 46.00 FOB VALUE, -1.00 CHANGE FROM MON.; SPARERIBS, 3.5 LBS. AND DOWN, 3.03% OF CARCASS, 101.00 FOB VALUE.

PICNICS, 8-12 LBS., 10.31% OF CARCASS, 32.00 FOB VALUE; BUTTS, 1/4" TRIM, 4-8 LBS., 7.25% OF CARCASS, 72.00 FOB VALUE, 1.50 CHANGE FROM MON.

JOWL 2.85%, 23.00 FOB; NECK-BONES, 1.52%, 11.00 FOB; FEET, 1.05%, 21.00 FOB.

TAILS, 0.22% OF CARCASS, 34.00 FOB VALUE; TRIM 72%, 2.19% OF CARCASS, 42.50 FOB VALUE; LARD,

10.85% OF CARCASS, 20.25 FOB VALUE.

TOTAL CARCASS: 94.51%; US#2 CARCASS VALUE PER CWT: 59.60. NOTE: VALUE MAY CHANGE WITHOUT ADEQUATE TEST.

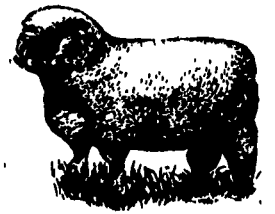
North Jersey Livestock

Hackettstown, NJ

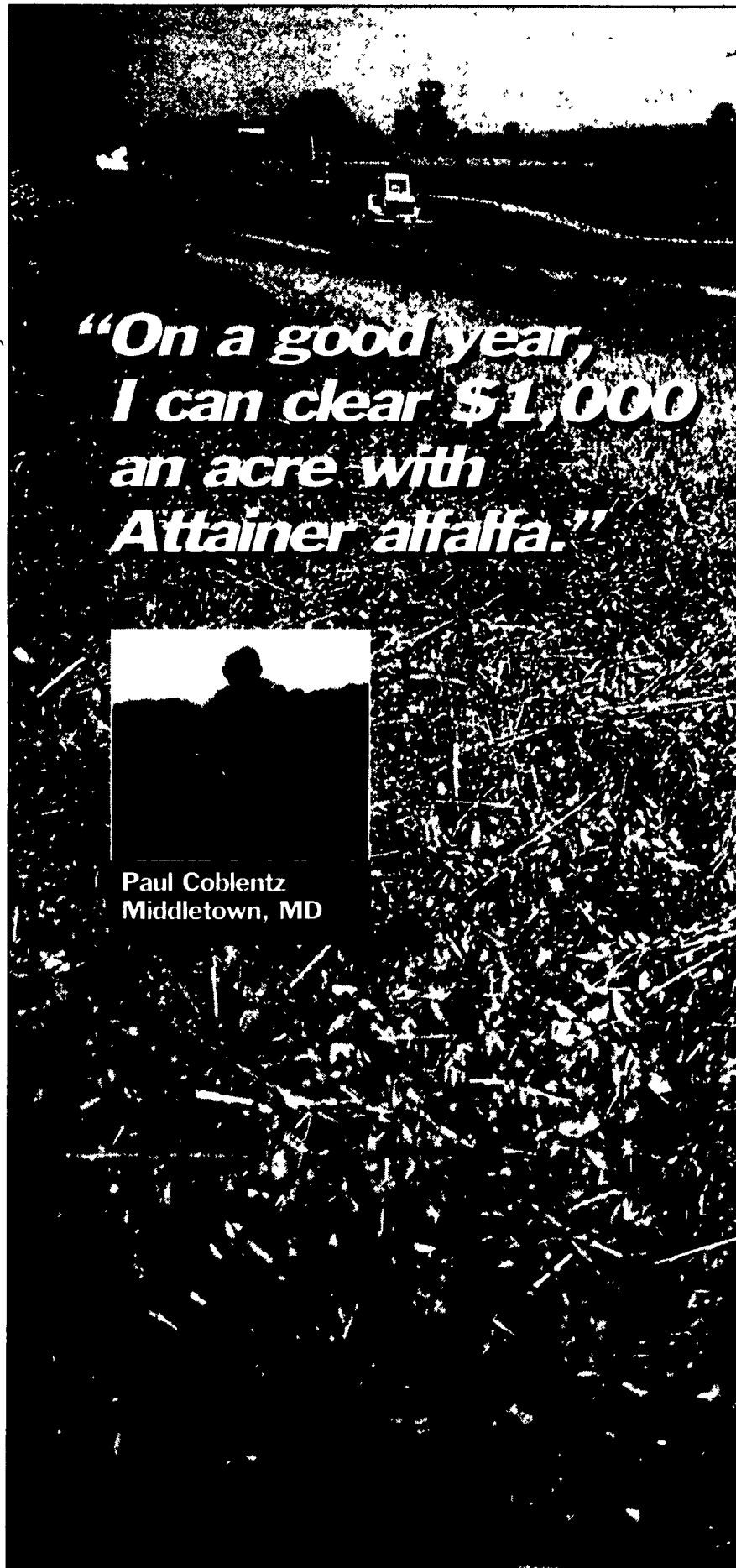
Report Supplied by Auction Tuesday, November 21, 1995

Report supplied by auction

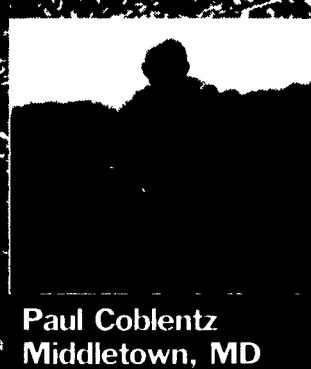
CALVES .11-1.00.
COWS .13-37% .
EASY COWS .01-.25.
FEEDERS 300-600 LBS. .14-.79.
HEIFERS .15% -.59% .
BULLS .21-.53.
STEERS .32-.58.
ROASTING PIGS EACH 25.00-29.00.
SOWS .15-.25.
SHEEP: .10-.55.
LAMBS EACH 8.00-90.00.
LAMBS PER LB. .30-1.11.
GOATS EACH 49.00-100.00.
KIDS EACH 9.00-87.00.
TOTAL: 1043 HEAD.



SNOWBEAR
No Messy Hydraulics!
LOW, LOW PRICE!
It's so easy!
MOUNT & DISMOUNT WITHIN SECONDS
SNOW REMOVAL WHEN YOU WANT IT, WITHOUT STRAIN OR BACKACHE.
Now it's fun!
(Equipment Distributors) FOR OVER 75 YEARS
FARM EQUIPMENT DIVISION
HAGERSTOWN, MD
(301) 791-0422
TODD FARM EQUIPMENT, Inc.



"On a good year, I can clear \$1,000 an acre with Attainer alfalfa."



Paul Coblentz
Middletown, MD

"Most years, I get five cuttings with Attainer That's 9 to 10 tons of hay per acre, so I make twice as much on alfalfa as any other crop Attainer doesn't harden down as fast as other varieties, so you have a longer time to cut it in its most digestible form With Attainer, my cutting time is more flexible than other varieties

"I like to grow alfalfa The day I need to cut it, I'm there You won't get five cuttings a year if you're not I do what it needs when it needs it And apparently it works I can sell my alfalfa anytime People want to buy it because they say their cows milk well on it"

In field trials, Attainer produced 16,200 lbs of milk/acre Its large harvest window guarantees that you'll receive maximum feed value Plus Attainer is highly resistant to all major alfalfa diseases Attainer is just one of the alfalfas in our top producing lineup — a lineup that now includes W-L alfalfas

For more information on Hoffmans outstanding line of alfalfas, call us at 1-800-776-7929 Let us show you how to add to your seed investment



Hoffman Seeds, Inc.
Landisville, PA 17538
Call Toll Free 1-800-776-7929
Adding Value to Your Seed Investment
©1995 Hoffman Seeds, Inc

GOOD'S LIVESTOCK, INC.
GOOD'S
RECEIVING STATION
Market Hogs ■ Sows
Boars ■ Cull Pigs
Rt. 897 - 1 mile North of Fivepointville
(717) 445-5776 • FAX (717) 445-6963