

**Cumberland Valley Produce Auction**

Shippensburg, Pa.  
Nov. 16 and 21

Report Supplied by Auction

APPLES: RED FUJI, NITTANY, RED AND YELLOW DELICIOUS, ROME, STAYMAN AND SUMMER RAMBO, 1.00-5.00, ALL 1/2 BU.

APPLE CIDER: 1.45-1.85 GAL.  
BANANAS: 8.75-9.50 CASE.  
BROCCOLI: 3.25 1/2 BU.  
CABBAGE: 1.00-3.75 50 LBS.  
CAULIFLOWER: .05-.65 HEAD.  
GRAPEFRUIT: RED 7.25-11.50 1/2 BU.  
ONIONS: 6.50-8.00 1/2 BU.  
ORANGES: FLORIDA NAVELS 7.50-12.50 BOX, TEXAS NAVELS 4.00-7.00 BOX.  
POTATOES: WHITE 1.75-3.25 1/2 BU., 4.50-5.10 50 LBS.  
SQUASH: BUTTERNUT 2.00-3.50 BU.  
SWEET POTATOES: 3.50-4.50 1/2 BU.  
TANGERINES: 5.00-9.50 BOX.  
TOMATOES: 1.00-4.00 1/2 BU.  
TURNIPS: 2.25-4.25 1/2 BU.  
CHRISTMAS TREE AND CRAFT SALE TUES., NOV. 28. CRAFTS 9 A.M. TREES 11 A.M.

**Phila. Potato**

PHILADELPHIA Terminal Prices as of 21-NOV-95 CLOUDY 42-47

THE 1994 SUMMARY OF FRUIT AND VEGETABLE PRICES FOR THE PHILADELPHIA WHOLESALE MARKET IS NOW AVAILABLE. COPIES MAY BE OBTAINED BY CONTACTING THE USDA AT 3301 SOUTH GALLOWAY ST., ROOM 261, PHILADELPHIA, PA 19148. PHONE: (215) 597-4536. THE COST IS \$20.00 PER COPY.

ONIONS AND POTATOES --- ONIONS DRY: MARKET ABOUT STEADY US#1 OR GENERALLY

GOOD QUAL AND COND UNLESS OTHERWISE STATED. Yellow CO 50 lb sks jbo 7.50-8.00 mostly 7.50 fr cond 6.00-6.50 UT 50 lb sks jbo 7.50-8.00 mostly 8.00 Globe Type NY 50 lb sks med 5.00-7.00 mostly 6.00-6.50 few 8.00 Spanish Hybrid ID/OR 50 lb sks jbo 7.50-8.00 mostly 7.50 few 7.25 White CO 50 lb sks jbo 15.TED Russet CD New Brunswick CD One 50 lb ctns 70s 13.00 80s 13.00 90s 10.50 Prince Edward Island 50 lb ctns 70s 13.50 some 14.00 80s 13.00 90s 11.00-11.50 100s 10.00-10.50 Burbank ID bld 10 5-lb fimbgs non sz A 9.00-10.00 mostly 9.00-9.50 50 lb ctns 70s 17.00-19.00 mostly 17.00-18.50 80s 16.00-17.00 mostly 17.00 few 18.50 90s 13.50-14.00 mostly 13.50 100s 10.50-11.50 mostly 11.50 few 12.00 120s 12.00 Norkotah WI 50 lb ctns 70s 13.50 80s 13.50 90s 11.00 100s 10.50 120s 10.00 Round Red MN/ND 50 lb sks 8.00-9.00 sz B 12.00-14.00 Round White CD Prince Edward Island 50 lb sks 5.50-6.00 mostly 5.50 lge 6.25-6.50 mostly 6.50 DE 50 lb sks 5.00 lge 6.00 LI 50 lb sks 5.50-5.75 mostly 5.50 lge 6.50 ME 50 lb sks lge 6.25 PA 50 lb sks fr qual 4.50

**Central U.S. Carlot**

Beef Report

November 21, 1995

Report supplied by USDA

USDA NATIONAL CARLOT BEEF REPORT (INCLUDES MAJOR PRODUCTION AREAS IN THE MIDWEST AND TEXAS) AS OF 3 P.M.

COW AND BULL CARCASS FOB OMAHA

7.0 LOADS REPORTED COMPARED TO MONDAY'S 3 P.M. REPORT: UTILITY CARCASSES NOT ESTABLISHED; CUTTER STEADY; BULLS STEADY TO WEAK DEMAND AND OFFERING LIGHT TO MODERATE.

UT.BRK 2-4 450 LBS. AND UP, LAT-

EST EXTB. MKT. 50.00 D.  
UT.BNG 1-3 400 LBS. AND UP, LAT-EST ESTB. MKT. 54.00 D.  
CUTTER 1-2 350 LBS. AND UP, 5.0 LOADS, RANGE 58.00-59.00, LATEST ESTB. MKT. 58.00-59.00.  
BULLS YG1 500 LBS. AND UP, 2.0 LOADS, RANGE 74.00, LATEST ESTB. MKT. 74.00.  
COW AND BULL CARCASSES CAF WEST COAST 0 LOADS REPORTED COMPARED TO LAST WEEK: MARKET FOR WEEK ENDED NOV. 17, 1995.  
UT.BNG 1-3 400 LBS. AND UP, RANGE 57.00.  
CUTTER 1-2 350 LBS. AND UP, RANGE 59.00.  
BONELESS PROCESSING BEEF/ BEEF TRIMMINGS 132.0 LOADS REPORTED FRESH 90% BONELESS BEEF FIRM TO 1.00 HIGHER; 85% UNEVEN; 75% STEADY; 65% WEAK TO 4.00 LOWER DEMAND AND OFFERINGS MODERATE. BEEF TRIMMINGS UNEVEN ON LIGHT TO MODERATE DEMAND AND MODERATE TO HEAVY OFFERINGS.  
FOB OMAHA BASIS  
90% FR, 21 LOADS, RANGE 82.0-84.0, WT. AVG. 82.95.  
90% FZ, RANGE 88.00, WT. AVG. 88.00 C.  
85% FR, 15 LOADS, RANGE 72.0-76.0, WT. AVG. 73.33.  
85% FZ, UNQUOTED.  
75% FR, 4 LOADS, RANGE 66.5, WT. AVG. 66.50.  
75% FZ, UNQUOTED.  
65% FR, 18 LOADS, RANGE 50.5-56.0, WT. AVG. 53.33.

65% FZ, UNQUOTED.  
50% FR, 59 LOADS, RANGE 41.00-45.00, WT. AVG. 45.00.  
50% FZ, 6 LOADS, RANGE 45.00, WT. AVG. 45.00.  
50% BOX, UNQUOTED.  
BULL 92-94, 1 LOAD, RANGE 101.00, WT. AVG. 101.00.  
FOB EAST TX & OK  
90% FR, 8 LOADS, RANGE 83.0, WT. AVG. 83.00.  
90% FZ, UNQUOTED.  
85% FR, UNQUOTED.  
85% FZ, UNQUOTED.  
75% FR, RANGE 65.5, WT. AVG. 65.50 D.  
75% FZ, 65% FR, 65% FZ, UNQUOTED.  
CAF NORTHEAST AREAS  
90% FR, RANGE 86.0-87.0, WGT. D. AVG. 86.44 D.  
90% FZ, 85% FR, 85% FZ, 75% FR, 75% FZ, 65% FR AND 65% FZ, UNQUOTED.  
CAF WEST COAST BASIS WEEK ENDED 11/17/95  
90% FR, RANGE 83.0, WT. AVG. 83.00.  
90% FZ, RANGE 92.0, WT. AVG. 92.00.  
85% FR, RANGE 75.0-76.0, WT. AVG. 75.50.  
85% FZ, UNQUOTED.  
75% FR, RANGE 62.0-65.0, WT. AVG. 63.50.  
75% FZ, UNQUOTED.  
65% FR, RANGE 55.0-57.25, WT. AVG. 55.79.  
65% FZ, UNQUOTED.  
50% FR, RANGE 42.5, WT. AVG. 42.50.  
50% FZ, UNQUOTED.  
\*\*ABCDE AFTER QUOTES REPRESENTS

SENTS DAYS SINCE LAST ACTUAL MARKET TEST. QUOTES ARE DROPPED AFTER 5 DAYS OF NO TEST OR BEFORE IF THEY NO LONGER REFLECT CURRENT MARKET CONDITIONS.\*\*  
SOURCE: USDA MARKET, DES MOINES, IA.

**Shenandoah Valley Livestock**

Harrisonburg, Va.  
November 18, 1995

Report supplied by auction

STEERS: 300-499 LBS. 50.00-74.00; 500-699 LBS. 45.00-65.50; 700-1000 LBS. 40.00-60.00.  
HEIFERS: 300-499 LBS. 30.00-47.50; 500-699 LBS. 36.00-52.00; 700-1000 LBS. 32.00-50.00.  
BULLS: 300-499 LBS. 30.00-58.00; 500-699 LBS. 35.00-42.00.  
HOLSTEIN STEERS 3-499 30.00-52.00; 5-699 31.00-42.00; 7-1100 29.00-40.00.  
BABY CALVES: 10.00.  
SLAUGHTER COWS: 28.00-33.75.  
SLAUGHTER BULLS: 40.00-42.75.  
CHOICE AND PRIME YIELD GRADE 1-3 BLUE O 75.50; GOOD AND CHOICE YIELD GRADE 1-2 RED O 81.75.  
FEEDER LAMBS: MED. & LGE. 1&2 70-84 LBS. RED SH 84.75; 60-69 LBS. RED BK, NONE; 50-59 LBS. RED TL, NONE, (BL TL) 76.00.  
SLAUGHTER EWES: 15.50-28.00.  
HOGS: 200-240 LBS. 50.00-60.00; BOARS 21.00; VEALS 55.00; SLAUGHTER CALVES 52.00.

**NEW ENERGY COMPANY OF INDIANA DISTILLERS GRAINS**

AVAILABLE AT  
CUMBERLAND VALLEY COOPERATIVE  
SHIPPENSBURG, PENNSYLVANIA

CALL THE NEW ENERGY MARKETING DEPARTMENT FOR PRICING INFORMATION

800-462-8263

**Discover INNOVATOR**

with +Z seedling resistance

**The +Z advantage**

New +Z alfalfa varieties have high levels of genetic seedling resistance to *Phytophthora* and *Aphanomyces*.

For alfalfa growers, this means thick and healthy stands, better winterhardness, longer stand life and higher yield potential

**Introducing Innovator +Z**

For high stem protein, high digestibility

- NIRS selected for high stem protein, total protein
- Outyielded 80 other varieties in university trials
- High digestibility for more milk and beef
- High resistance to four major alfalfa diseases
- Excellent winter survival
- Fall dormancy rating 3.0

Call or stop by soon to see the difference +Z makes!

**P.L. ROHRER & BRO., INC.**

Smoketown, PA

PH. 717-293-2571

Pennsylvania Agricultural Commodities Marketing Association, Inc.



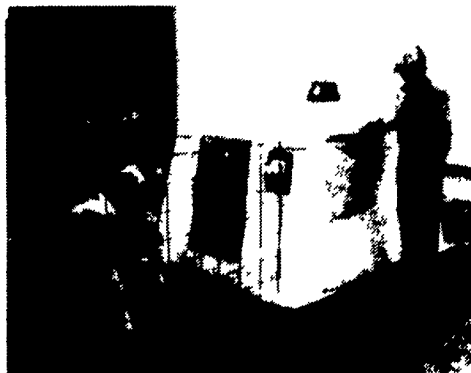
A privately held full service commodity merchandising firm

475 East High Street, Palmyra, Pa. 17078  
Started by Producers for Producers  
Call today to see how PACMA can broaden your marketing efforts whether you're BUYING or SELLING

**We can lock-in your prices for Hogs!**  
**HOG FORWARD CONTRACTS**  
Also - Grain Forward Contracts Available  
**CALL TODAY - 717-838-7050**  
or 1-800-PACMA INC.

**Poly SQUARE**

CALF NURSERY  
#1 in Sales World-Wide



**Poly Square Means Healthier Cows**

The Poly Square Big Foot is constructed of Opaque material to eliminate the solar effect. It blocks out sunheat-not sunlight. Poly Square's inverted ribs and 5'(W)x7'6"(L) make it the biggest unit on the market today and extremely wind resistant. It has no pop rivets-which means no breaks or cracks for snow and rain to sift in. The unit weighs 100 pounds plus manger & buckets. And Poly Square Big Foot is large enough so your calf can lay in the center, away from cold walls in the winter. Use Poly Square with our side feed station and bottle holder which is perfect for use with a fence in a more traditional setting.

New Side Hay Feeder—Made especially for Poly Square Big Foot, no other unit has this feature. Also has a center roof vent for better air movement.

ALSO AVAILABLE:  
Poly Domes, Silo Chute Hoppers, Silo Chute Liners, Foot Baths

WHOLESALE & RETAIL

**RISSELER**  
-TMR MIXERS



**SPECIAL DEALS ON I.H. Rissler TMR Mixers, Feed Carts and Round Bale Feeder Carts**



**Stationery Round Bale Feeder Carts available with 3 pt. Hookup**

Regional POLYDOME Distributor

**ZARTMAN FARMS**

Philadelphia, PA

150