

BUY, SELL, TRADE OR RENT THROUGH THE CLASSIFIED ADS

PHONE: 717-626-1164 or 717-394-3047
FAX 717-733-6058

Mon., Tues., Wed., Fri. 8 AM to 5 PM; Thurs. 7 AM to 5 PM

1 FARM EQUIPMENT

Case 1030 Diesel With NI Bucket Loader. Runs Good. \$5,500. (201)579-1292.

Jeep 4 cylinder motor \$75, slant 6 truck motor \$25. (610)582-2197.

1700 Mustang Skid Loader, 40 Horsepower, Ford Engine, 60 Hours on Overhauled Engine, \$3,900. (717)548-9340.

18 HP 4-wheel drive 235 Case IH tractor w/loader, 400 hrs., on steel or turf tires. (717)524-7998. No Sunday calls.

1940 9-N Ford, strong engine, good tin, good rear rubber. With front wheel weights, rear chains, 3-point drawbar. Tractor comes with JD #9 3-pt. sickle bar mower, \$1950. (610)562-8945.

1947 John Deere A; Ford 8N. 717-336-2497 after 4PM.

1949 JD Cyclone A, roll-a-matic, powertrrol perfect sheet metal, excellent tires, 5' Brillion mower, 6' blade, \$4,500. (717)389-1605.

1952 Farmall Super M, Runs Great, Good Tin, Good Tires, Asking \$2700 OBO. (410)658-5226.

1965 Farmall 806 Diesel, Strong Engine, New Clutch, Good TA, \$10,000. (814)349-8019.

2155 JD in barn fire, all or parts \$2000.; 904/466-3740, 466-4259 or 466-3394.

(2) 1988 Bocat Running Floor Trailers W/Hydraulic Landing Gear, Very Good Condition. 1981 International 4300 Truck Tractor, 325 Horsepower Ca! Engine, 15 Speed Transmission, Air Ride. 350 Horsepower Champion Side Dump Forage Harvester. (717)334-4056. 7am-4pm, M-F

(2) 20ft. Grain Drying Floors, \$700. 50 Shower Ease Tie Stalls With Vacuum Line-Pump And Water Bowls, \$400. (717)444-3216.

2640 MF tractor, 100hp; 13' disc; 10' 3pth disc, 10' roller harrow; 12' Meeko harrow; subsoiler; 3 bottom rollover plow; 12' JD grain drill; root washer; vegetable dipper. (609)298-1809.

2 Feeder Wagons, Round or Square Bales, Wood Construction, 20 Head Capacity Each. (717)833-5007.

322 Gehl Scavenger Spreader 1Yr. Old. Spread Less Than 100 Loads Shed Kept. New Condition. \$6,000. Call (703)896-7752.

1968 2 Cow Wooden Cattle Trailer; 1,850 Gallon Anhydrous Amonia Tank and Wagon w/Meter and Cold Flow Box, Excellent for Treating Corn Silage. All Offers Considered; 7' Tire Scrapper, 3Pt. Hitch, Good Condition. (610)687-4286.

1978 Gleaner M2, 15' grain platform, 4-row 438 corn-head. (717)752-3853.

1979 2WD Kubota tractor, model 245L, 3pth, PTO, runs well, asking \$2,900 OBO. (717)838-1438 days, (717)564-1478 evenings.

1979 International 1440 axle flow combine, 2900 hrs., 13', 1810 grainhead, 4R 843 cornhead, 1 owner. 814-629-9566.

1982 Deere 6620, low hrs., Indiana machine, emmaculate, 90% tires, \$26,650. 6600 diesel, 50 hrs. on engine major, \$6,500. Larry Stalter, "The Combine Man" 1-800-248-2151

1988 JD tractor loader, 4WD, \$12,500, like new. 609-924-3032 anytime.

1 Pair New Style 30.5-32 Firestone 10Ply 23 Degree Tires, 95%. (412)837-5151 Days, (412)837-0447 Evenings.

We Now Accept Visa & Master Card

(Word Ads Only)

CLASSIFIED AD ORDER BLANK

PLEASE WRITE CLEARLY

MAIL TO:
LANCASTER FARMING
P O Box 609 Ephrata, PA 17522

NOTE: Please do not use this form for Mail Box Market Ads, see instructions with Mailbox Markets

Name _____
Address _____
City _____ State _____
Zip _____ Phone() _____
Please publish my _____ word ad _____ times starting with the _____ issue. Classify under # _____ I enclose _____

PLEASE CALL OUR CLASSIFIED AD DEPT. IF YOU WANT TO ADVERTISE A DISPLAY BOX IN OUR PAPER



CLASSIFIED ADVERTISING RATES

45¢ per word per week - 1 or 2 times
40¢ per word per week - 3 or more times
11 word minimum

| Words | 1 Time | 2 Times | 3 Times |
|----------|--------|---------|---------|
| up to 11 | 4.95 | 9.90 | 13.20 |
| 12 | 5.40 | 10.80 | 14.40 |
| 13 | 5.85 | 11.70 | 15.60 |
| 14 | 6.30 | 12.60 | 16.80 |
| 15 | 6.75 | 13.50 | 18.00 |
| 16 | 7.20 | 14.40 | 19.20 |
| 17 | 7.65 | 15.30 | 20.40 |
| 18 | 8.10 | 16.20 | 21.60 |
| 19 | 8.55 | 17.10 | 22.80 |
| 20 | 9.00 | 18.00 | 24.00 |

DEADLINES
SECTION C - WEDNESDAY AT 5 00 P.M.
SECTION D - THURSDAY AT 9 00 A.M.
OF EACH WEEK'S PUBLICATION

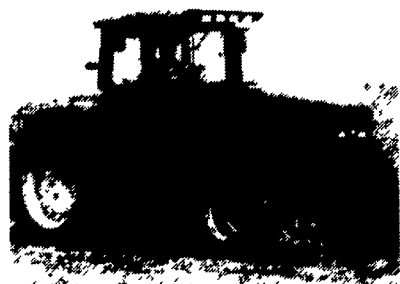
| | | | | |
|----|----|----|----|----|
| 1 | 2 | 3 | 4 | 5 |
| 6 | 7 | 8 | 9 | 10 |
| 11 | 12 | 13 | 14 | 15 |
| 16 | 17 | 18 | 19 | 20 |
| 21 | 22 | 23 | 24 | 25 |
| 26 | 27 | 28 | 29 | 30 |
| 31 | 32 | 33 | 34 | 35 |
| 36 | 37 | 38 | 39 | 40 |

(PHONE NUMBERS COUNT AS ONE WORD)

HERNLEYS FARM EQUIP. INC.

717-367-8867

2095 S. Market St.,
Elizabethtown, PA 17022



NEW TRACTORS

- AGCO ALLIS 5670 AWD
- AGCO ~~SOLD~~ 60 AWD
- AGCO ALLIS 7600 Cab-AWD
- AGCO ALLIS 5650 AWD

USED TRACTORS

- AC 190 XT
- AC 5050 AWD w/400 Series Loader
- White 2-155, 2WD, w/Duals (Nice Condition)

Hesston Hay Equipment
0% Financing until Sept. 1996



HAY EQUIPMENT

- HESSTON 1130 9 FT. Mower cond.
- HESSTON 1160 12 ft. Mower cond.
- HESSTON 7155S Forage Harvester w/Heads
- HESSTON 4755 Mid-Size Baler
- HESSTON 4570 Baler w/Thrower

MANURE SPREADERS

- 1 - Hesston 390 Tandem Axle
- 1 - Hesston 320 Tandem Axle

USED EQUIPMENT

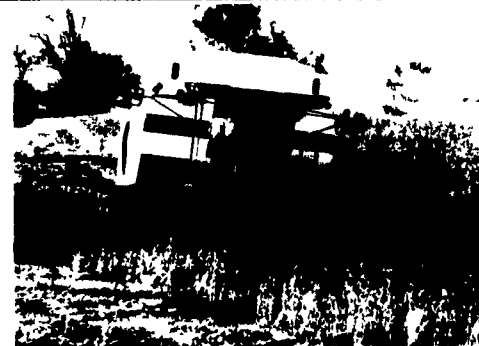
- AC Disc 13.5 ft.
- NH 489 haybine
- Hesston 1130 - Like new condition!

Your New MASSEY-FERGUSON DEALER

- MF 1230 AWD
- MF 1240 AWD
- MF 1250 AWD
- MF 240 2 WD
- MF 261 2WD
- MF 383 2WD



LARGEST GLEANER COMBINE DEALER ON THE EAST COAST!



Get the SALES and SERVICES YOU DESERVE!

See What a Quality Gleaner Combine Can Do For YOU In The Field
Talk to us for a Demonstration in your field.

NEW COMBINES

- R52 Combine
- 500 Series — 25' Flex Head 20' Flex Head

USED COMBINES

- 1994 Gleaner R-62 Combine, Excellent Condition, 3 Yrs. Warranty Left!
- 1993 Gleaner R-62, Excellent Condition, 2 Yrs. Warranty Left, Ex. Cond.
- 1993 New Holland TR 86 With 6 Row Corn Head and 16' Flex Head - Only 250 Hrs.
- 1986 Gleaner R6 w/6 Row Corn Head
- 1985 Gleaner N6, With 6 Row Corn Head and 16' Flex Head
- 1979 IH 1480 Combine w/17' Flex Head - Field Ready

USED CONVENTIONAL COMBINES

- 1 Gleaner L-2 Combine
- 1 Gleaner M-2
- Gleaner ~~SOLD~~ 3
- 1 Gleaner L Combine

ALL COMBINES

0%

INTEREST WAIVER UNTIL SEPT. 1, 1996

When You Want Service You Can Count On Us!