



MACK 6x6 TRUCKS

Cummins V8 Diesel Jake and full Air Brakes P.S. 1400/24 Tires Double Frame Rear Drag Winch (50,000 lbs.). Differential Locks. (60 Tons) Hauling Capacity. Like New Only 800-17,000 Miles. A must for every Farmer.

\$10,500 to \$12,500

(814) 834-1018 St. Marys, PA

R & R CAR AND TRUCK CENTER

1657 Rohrerstown Road, Lancaster, PA

1986 IHC 1954

DT466, 5 & 2 Spd, P/S, A/B, 33,200 GVW, 16" Thiele Steel & Alum Grain Body, New Paint & Insp Very Clean Only 156,000 Mi

\$16,900



1981 FORD LN800,

429 V8 Gas, 5 & 2 Spd, P/S, A/B, 35,000 GVW, with 2800 Gallon Fuel Tank Includes Meter & Hose Reel

Priced To Sell



1981 GMC Brig., 6-71 D.D., 9 Spd, P/S, A/B, 35,000 GVW, 22" C&C, Double Framed, New Insp., Clean

Only \$7,500



(10) 28'-40'-45' Storage Trailer

Call Ray Leed 717-560-4901



'84 International

Single axle truck tractor, rebuilt engine; 30' gooseneck lowboy trailer, tilt bed with winch.

610-593-2728

FISHER TRAILER SALES

SPECIALS — All '95's at reduced prices

PONDEROSA — Standard 4 wheel brakes, breakaway, spare wheel, Torsion axles, undercoated GN 2-horse w/6' dress room, separate tack 7' tall Bm. \$5700 Reduced \$5000
Bp 16' stock blue \$2950 Reduced \$2850
Bp 14' stock bm \$2850 Reduced \$2750
Bp 14' stock red w/stall divider. \$3000 Reduced \$2900
Bp 12' stock teal. \$2750 Reduced \$2650

MORITZ — Bp 16' stock bk '96 5200# axles 7' tall spare holder wheel and tire inspected... .. \$4100 Reduced \$3800
Gn 16' stock red '94 5200# axles 7' tall 7' wide plywood lined like new... \$5500 Reduced \$4200

USED — Bp 16' stock red '77 4 wheel brakes, 6' wide... .. \$1700
Gn 16' stock bk '95 6'8" wide inspected lined 6000# torsion axles... .. \$4800 Reduced \$4400

STAR — Bp 2-horse gray '96 6'10" tall split ramp bus windows tack space 4 wheel brakes spare tire... \$3500

Order your own custom made trailer and have in 3-4 weeks Full notary service and temp tags Open 7 days by appointment or chance

717-242-0941

Middle Rd., McVeytown, Pa. 17051

For sale by farmer: 83 Chev Scottsdale K-20, 4x4, 350/4sp, 9000 GVW, class III, hitch, towing package, 102K, needs some body work, engine runs 100% but used oil, \$2,500. (717)367-3801.

Gehl Model 7210, Blender Feeder W/Digital Scales, Like New W/ Warranty. New List, \$14,900. Cash Price, \$8,975. DJ Implements-PA, Call (717)949-3769, From 7:30am-5:00pm. Virginia Office (540)879-9926, From 9:00am-4:00pm.



1985 Delta Lowboy Trl. 48'x102" Spring Susp., Special Build For Combines or Can Haul Two Log Skidders

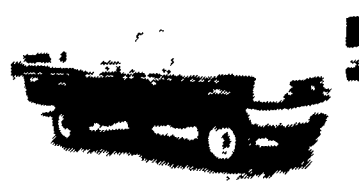
\$15,500 OBO
(717) 754-7627

USED TRUCKS



91 Ford F-250 XLT Lariat, 8600 GVW 4x4, 351 FI, 5 Spd PS, PB, AC, PW, Pdl. Cruise, Tiltwheel, Rear Sliding Window, Dual Tanks, Two tone, Maroon & Silver, Local One Owner, 63,000 Miles

\$14,500



94 Ford F-250 4x4, 8600 GVW 5.8 FI, auto, w/od, ps, pb, ac am & fm stereo, dual tank 32,000 miles one owner

\$18,500

Financing Available

MARTIN'S AUTO SALES

1025 W. Main St., New Holland, PA 17557
(717) 656-6621

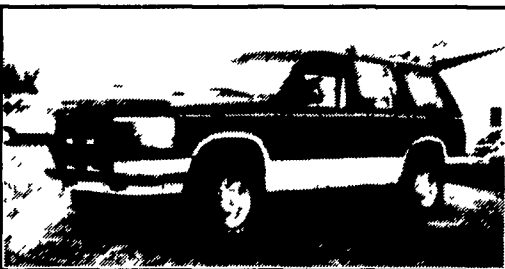
Keystone Peterbilt, Inc.

1467 Manheim Pike • P.O. Box 4396 • Lancaster, PA 17604

1-800-243-2458



717-299-6630



1991 Ford Explorer, 4x4, Eddie Bauer, F.I., 6 Cyl. (4.0) Auto/Overdrive, PS, PB, P. Windows, P.D.L., Tilt, Cruise, Air, AM/FM Cass., Lumbar Seats, Rear Defrost & Wiper, 1-Owner, 59,000 Orig. Miles, New Tires and Inspection. Burg/Tan Finish, Tan Leather Int. \$14,900



1991 Plymouth Grand Voyager SE, All Wheel Drive, F.I., 6 Cyl. (3.3) Auto/Overdrive, PS, PB, P. Mirrors, P.D.L. Tilt, Cruise, Air, AM/FM Cass., Rear Wiper & Defrost, 7 Pass., Good Cond. Inside & Out, 6 Mo/6500 Mile Warranty, Average Retail \$12,500 \$7,995



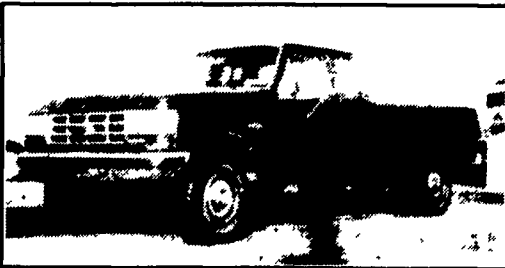
1988 Jeep Wrangler, 6 Cyl., 5 Spd, PS, PB, Pull-Out AM/FM Cass., Alloy Wheels, Tan Soft Top, Yellow Finish, Very Good Condition Inside and Out \$6,995



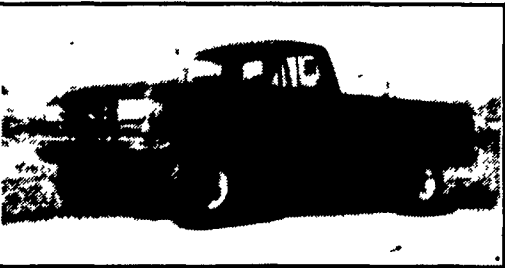
1991 Ranger XLT, 4x4 Ext. Cab, Jump Seats, Auto/Overdrive, AM/FM Cass., Bedliner, Running Boards, Bright Red Finish, Grey Cloth Int., V6 (2.9) PS, PB \$8,995



1987 Chev. C-30, Custom Delux Rollback, 14 Ft. Bed, 6.2 Diesel, 4 Speed, PS, PB, AM/FM Stereo, Good Cond. \$6,995



1987 Ford F-250 XLT, Lariat Ext. Cab, 4x4, 6.9 Diesel, Auto, PS, PB, P. Windows, P.D.L. Tilt, Cruise, Air, AM/FM Cass., Full Rear Seat, Sliding Rear Window, Dual Tanks, Dark Blue Finish \$8,995



1988 Ford F-250, 4x4, V8, Auto, PS, PB, Air, AM/FM, Blue Finish, Blue Int., New Paint \$6,995



Mechanics Special, 1986 F-250, Diesel (6.9), Has Slight Wrist Pin Noise, Auto, PS, Dark Blue Finish \$3,495



1988 PETERBILT 377-36"; 3406B-350 Eng., RTO 14609B Trans.; DS402-4 33 R. Axle, Air Ride Susp.



1990 PETERBILT- Model 378 - 48" Sleeper, 3406-425 Hp., RTO 15618, DS 402370, Air Ride Susps



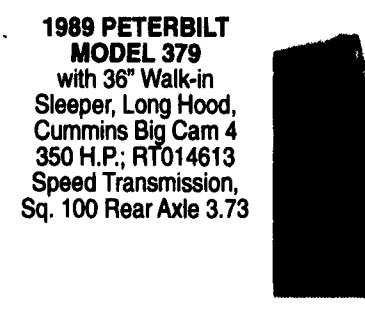
1985 AUTO-CAR 60" Sleeper, Cummins 400 HP, Fuller 13 Speed Trans., Newly Air Susp Dual Vertical S S Exhaust, Dual 150 Gal Alum Tanks



1990 I.H.C. 8200-3406-350 Eng., RTX 14609B Eng., DS402 Air Ride Susps



1996 PETERBILT 330 with Morgan Stake Body HPA-16, 16'6" Length, 96" Width; Low Air Ride Susp.; Cat 3116-230 Eng.; Fuller FS6306A - 6 Speed Trans.; Eaton R. Axle, 33,000 GVW. AVAILABLE WITHOUT BODY ALSO!



1989 PETERBILT MODEL 379 with 36" Walk-in Sleeper, Long Hood, Cummins Big Cam 4 350 H.P.; RT014613 Speed Transmission, Sq. 100 Rear Axle 3.73



1984 MACK SUPERLINER REST RITE, RWS722; 3406-350 Jake Eng., Mack T2090 9 Speed Trans., Mack-34,000 R. Axle; Camel Back Susp

COUNTRYSIDE AUTO SALES

(717) 664-2170 OFFICE

(717) 865-3488 HOME