

Public Auction Register

Closing Date Monday 5:00 P.M.
of each week's publication

PUBLIC AUCTION



**TRACTORS
TRUCKS
FARM EQUIPMENT**

SAT., DEC. 9, 1995

9:30 A.M. EQUIP. 11:00 A.M.

LOCATED: Winchester, VA Take Exit 317 off Rt. 81. Go North on Route 11 to First Road right, past Red Light on Redbud Rd. Go App. 3.5 Miles, turn Left on Woods Mill Rd. 1st. place on Left. Or take Route 7 East from Winchester App. 3 miles, turn Left on Route 660 1/2 Mile to sale site.

TRACTORS & TRUCKS

580 D. Case Back Hoe: AC D 17: AC C: JD. B: FARMALL H: 180 AC: 9N FORD: IH Road Tractor: 1989 Zetor 5211 D. Tractor, 169 hrs., excellent cond; '81 FORD PICKUP; 1975 1 Ton w/Cattle Racks (34,000) Miles: 1981 FORD 4x4 300 6 Cyl. 4-speed. (112,000) Miles: 1980 Dodge 4x4 3/4 Ton 318 (84,000) miles; 7 x 16 Stock Trailer; 24 Travel Trailer; 16 x 8, 2-Axle Trailer

EQUIPMENT

JOHN DEERE 640 Hay Rake; JD Hay Rake, 3-pt.; Ford Hay Baler; Ford 501 Mower; 2 B. 3-pt. Plow; 3 B. Plow; 10 Transport Disk; 3 pt. Disk; 7' Disk; New 5' Landpride Brush Hog; Spring Tooth Harrow, 8' Cultipacker; 3-pt. 1 Row Cultivator; Two 2 B. Plows; TWO 1-Row N. Idea Pickers; Two Wagons; Two Grain Elevators; Bale Fork; Two 8' Scraper Blades; 6' Scraper Blade; 6' Brush hog; 8' 3-pt. Disk; 5' Brush hog; 6' Off set Disk; Boom pole; 7' Stone Rake; Post driver; 3 pt. Scoop; Flail Chopper; Silage Wagon; Tanks; IH Crimper; N. Idea Manure Spreader; 5' Brush Hog; 2-Wh. Cart; FIBERGLASS GATES: MISC. FIBERGLASS; Iron Railing; 3 Wheels; Culvert; Pump; Circle saw; Window Wells; Ford Baler for Parts; Torch Set; Air Compressor; NEW FARM GATES; LAWN MOWERS; ETC. PLUS MANY ITEMS NOT LISTED

SALE BY
JEFF JENKINS
& Other Local Farmers
PH. (540) 667-3092

AUCTIONEERS
D. GOSSERT & WOLGEMUTH
Lic # 2905002200 (717) 733-8192
304-274-1664

FRI. NOV. 24 - 11AM Holsteins, Machinery. Auction to be held on the Farm at Corners of Wilson Creek Road and Hartman Hill Road. From NY Rt. 38 in Berkshire, Turn to East Berkshire Hill Rd., Proceed 3 Mi. to Wilson Creek Rd., Turn Left and Proceed 100 Yards to Farm. Berkshire is 4 Mi. South of Richford and 16 Mi. North of Oweego.

Watch for Arrows. Owners: George Hoffmier Sr. Mel Manasse Aucts.

FRI. NOV. 24 - 1PM Commercial Real Estate. The former Montour Delight Mfg., 3 miles S. of Turbotville, Pa. along Rt. 44. Alvin & Mary Zook, owners. Fraley Auction Co.

FRI. NOV. 24 - 1:30PM.

**PUBLIC AUCTION
FRI., NOV. 24, 1995**

at 9:00 A.M.

Located at Wotring Auction Center, Lehigh Co., Pa. on Route 873, 4.1 Miles North of the "Y" With 309 At Schnecksville - North of Allentown - Just South of Slatington.

Horse Sleighs - Mifflinberg Surrey - Kutztown Buggy - Carts - Farm Equip. - Primitives - Antiques - Farm Items - Early Tools - Circ. Sawmill - Horse Trailer - Tack.

Vehicles: Mifflinberg Auto Top Surrey/ Brakes/ New Rubber; Kutztown (Miller) Top Buggy, Cornell (?) Buggy (Rebuilt Wheels/Rubber), 2 Wheel Carts - 1 Oak Meadowbrook - 1 Antique Road Cart/Windsor Style Seat - Antique Cart With Built In "Box". Sleighs: Swell Body Albany Cutter, 2 Seat Sleigh/2 Back Doors/Takes Auto Top, App. 3 Cutters, 2 Seat Bobsled, Wagon Box Sleigh, Large Freight Sled, Farm Wagon.

Tack: Var. Western Saddles, Bridles, Blankets, Driving Harnesses, Collars, Economy 1 Cyl. Gas Eng. Primitives: Antique Broom Machine, Broom Maker Hammer, Primitive Wooden Lathe, Treadle Lathe/Stone Flywheel (Leg Damage), Double Trees, Wagon Hardware, Gambrel Sticks, Ice Saw, Hog Shaving Bench, Wooden "Louge" Goat On Wheels/Pull Handle, Buzz Saw, Wheelbarrow Style Grass Seeder, Var. Farm & Buggy Wrenches, Several Strings Nice Sleigh Bells, Potato Plow, Prim. Toboggan, Kero. Wagon Lanterns, Conestoga Wagon Ax Carrier & Wagon Saddle, Var. Childrens Snow Sleds, Stanley Planes, Buggy Lamps, Var. Rosettes, Wood Stove, Lap Robes, Grain Cradle, Ice Plow, Clover Cradle, Var. Forks, Oyster Shell Cracker and Lots Small Items. Circular Sawmill 52" Blade/3 Headblocks/Belt Drive 12' 2-Horse Trailer - Like New.

Farm Equip: Ford D 2000 Tractor, 54" Ford Tiller, Scraper Blade, 5' Bush Hog Mower, Tag Along 5' Mower, Craftsman 1 HP Air Compressor, 28 3 PH Plow, Gang Mower.

Terms: Cash or Penna. Checks only - None Out of State.

Tim Wotring
610-799-4843
AU 1563L

John Pfeiffer
610-767-9336
AU2982L

Auction Center 610-767-8610

State Graded Feeder Pig Sale. Carlisle Livestock Market, Inc., Exit 12 off I-81 turn South then left onto Alexander Spring Rd., 249-4511.

FRI. NOV. 24 - 3PM Real estate, slot machine, Tiffany lamp and jewelry. 30 minutes W. of Phila. 422 Expressway to Armand Hammer Boulevard to 1290 Wilson St., Pottstown, Pa. Ron Rhoads, Auct.

FRI. NOV. 24 - 4PM & SAT. NOV. 25 - 10AM Country Store Auction. For Convenience of Sale it Will be Held in the North Orwell Community Hall Along Rt. 187 in North Orwell, PA. (RD Rome, PA) - 12 Mi. North of

Wysox and Rte. 6 - Rte. 187 Junction. Tom & Margaret Guinan Owners. Howard W. Visscher Aucts.

FRI. NOV. 24 - 4PM Real Estate. Located Between Middleburg and Paxtonville, PA. Turn Off Rt. 104 at Middleburg Coastal Mart. Betty J. Inch Estate. Ken Smith & Dennis Hassinger Aucts.

FRI. NOV. 24 - 5PM Real Estate, Antiques, Household Items. Property Located Off Rt. 35, Approx. 3 Mi. North of McAlisterville Follow Sale Signs from Graybill's Hatchery. Sale will be held at Juniata Markets, Jct. of Rts. 75/Old 22, at the Blinking Lights, 1

Mi. North of Port Royal, Juniata Co. Owner: Marjorie Wagner. Long's Auction Service.

FRI. NOV. 24 - 6PM Toy Auction. 2500 W. End Ave., Pottsville. Blum's Auction Service.

SAT. NOV. 25 - 8AM Antiques, Music Boxes, Guns, Bobcat Skid Loader, Tools, Misc., House Items. Location: Winterstown Fire Hall, Approx. 3 1/4 Mi. South of Red Lion, PA Along Rt. 24 in Winterstown, Southern York Co., PA. Russell Wright & Ralph Brenneman Aucts.

SAT. NOV. 25 - 8:30AM Antique Furniture, Collectables, Guns & Misc. Tools. Auction to be held in the Chanceford Community Center, 7 Mi. Southeast of Red Lion, Off Rt. 74 Turning at the Brogue Post Office, Brogue, PA. & Proceed 1 Block to Sale on Left. Romaine W. Whitcraft Estate. Sechrist Auctioneers

SAT. NOV. 25 - 9AM Personal property, Winross & Hess trucks, etc. Off Interstate 83 at exit 12, go E. on Susquehanna Trail 1/4 mile, sale on left. For Esther Fitzgerald. Rentzel's Auction Service.

SAT. NOV. 25 - 9AM Power Carpenter Tools, Antiques, H.H. Goods. Located at RD #4, Manheim, PA. 4 Mi. W. of Manheim on Hossler Road to Baker Road. Sale by: John & Jean Slaugh. "Abe" Shaffer's Auction Service, Inc.

SAT. NOV. 25 - 9AM Household, Antiques, 1950 Chevy P.U. TK. Butcher Equipment. Bellgrove, PA. Estate of Violet Shanaman. Dwight Miller Aucts.

SAT. NOV. 25 - 9AM Short notice public auction, former Tilden Concrete & Supply Co. Real estate, tools & garage equip, truck parts. 203 W. State St., Hamburg, Pa., Berks Co. For Tilden Concrete & Supply Co. Eugene G. Klingler, auct.

SAT. NOV. 25 - 9:30AM Equip, tools, guns, household, antiques & collectibles. At the farm of David and Gertrude Bloomer, Main St., Oley, Berks Co. Pa. George Miller IV Auct. Co.

**JUNIATA COUNTY
60 ACRE WEEKEND RETREAT**

at

PUBLIC AUCTION

Fri. Eve., Dec. 15

7:30 PM

From Hbg. take Rt. 322 west, approx. 45 mi to the Mifflintown exit. Take Rt 35 south thru Mifflintown for approx. 15 mi. Sale sign along Rt 35. Property will be sold at Juniata Markets, Jct of Rts 75 and old 22, at the blinking lights, 1 mi N of Port Royal.

This 60 acre Hunter's Paradise, in Tusc. Twp. Juniata Co. w/a 3 bedrm cabin, offers some of the best deer and turkey hunting, some marketable timber and corners w/1000's of acres of PA State Forest Lands. A modern kitchen, a 24'x24' living room w/Mt. stone fireplace, full basement w/garage & wood stove. Heat is from an oil forced air furnace, elec. baseboard, fireplace and woodstove. Drilled well & on lot sewage system. IF YOU HAVE BEEN DREAMING OF A SECLUDED CABIN TO GET AWAY FROM IT ALL, DON'T MISS THIS ONE.

SHOW DATES: Nov. 25 & 26 and Dec. 2 & 3, from 1 to 4 PM each day or ph (717) 527-2405 for an appt.

TERMS: 10% down at time of sale, bal in 45 days, other terms at sale.

**LARRY E. BOYER,
OWNER**

LONG'S AUCTION SERVICE
Ph. 717-527-2405
Fax 717-527-2941
AU001702L

NOT RESPONSIBLE FOR ACCIDENTS

Annual Day After Thanksgiving

ANTIQUE TOY AUCTION

Cast Iron Cars, Trucks & Planes

Friday, November 24, 1995

10:00 A.M.

Ridge Fire Co. Pavilion

Along Rt. 23, between Phoenixville, PA and Rt. 100
(3 miles east of Rt. 100, West of Phoenixville)



Public Exhibition

From 8:00 A.M. Sale Day Only

WE ACCEPT NO MAIL OR PHONE BIDS



TED MAURER (AU-000593-L)
SUCCESSFUL AUCTION MANAGEMENT
1003 BROOKWOOD DR., POTTSTOWN, PA 19464
(610) 323-1573 or (610) 367-5024

PUBLIC SALE

OF

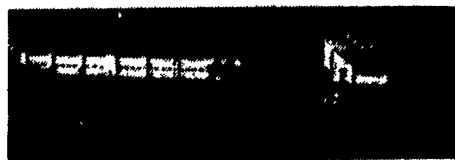
**LEACOCK MUNICIPAL BUILDING,
REAL ESTATE**

LEACOCK TOWNSHIP (RT. 340)

THUR., DECEMBER 7, 1995

AT 2 P.M.

Located at 3347 Old Philadelphia Pike (Rt. 340), Leacock Township, Lancaster County, PA. (Approx. 1/3 mile West of Intercourse & 7 miles East of Lancaster.)



**40' x 120' MASONRY BUILDING
BUILDING #1**

5 TRUCK GARAGES - 3 OFFICES

THIS BUILDING CONTAINS 5 TRUCK GARAGES, 3 OVERHEAD DOORS, 14' WIDE x 12' HIGH; 2 OVERHEAD DOORS - 12' WIDE x 12' HIGH, 40' x 52' HEATED AREA - oil fired hot air heat; 3 OFFICES - electric heat - 2 REST ROOMS; 2 built-in wall air conditioning units.

**34' x 56' MASONRY BUILDING
BUILDING #2**

OVERHEAD GARAGE DOOR, 16' WIDE x 14' HIGH; 24' WIDE x 16' HIGH OPENING (no door); STORAGE AREA; 110 & 220 electric; running water. Lot Size: 240' M/L frontage - 155' M/L depth, approx. 1 acre M/L.

This property ideal for many uses, garage, retail shop, office space, light industrial, etc. For inspection call Township Office (717) 768-8585.

No Out of State Checks Unless Accompanied by a Current Bank Letter or Prior Arrangement with Auction Service.

Blankinger, Byler & Thomas
Frank Mincarelli, Atty.

Terms By:
Leacock Township
(717) 768-8585

HORST AUCTS.
T. Glenn
Timothy G.
Thomas A.
AU438L
(717) 859-1331 • (717) 738-3080
Fax # (717) 738-2132
"VOICES OF EXPERIENCE"