



**HOG MARKETS**

**New Holland Feeder Pigs**

New Holland, PA  
Wed., November 16, 1995  
Report Supplied by USDA  
TODAY: 779 HEAD  
LAST WEDNESDAY: 247 HEAD  
LAST YEAR: 1028 HEAD  
TREND: COMPARED TO LAST WEDNESDAY'S SMALL SUPPLY, FEEDER PIGS 14.00-20.00 LOWER. ALL PIGS WEIGHED ON ARRIVAL AND SOLD BY THE HUNDRED WEIGHT.

GRADE 1-2: 103 HEAD 30-39 LBS. 64.00-82.00, WEIGHTED AVERAGE 36.50, WEIGHTED PRICE 74.87; 212 HEAD 43-48 LBS. 58.00-66.00, WEIGHTED AVERAGE 45.28, WEIGHTED PRICE 60.84; 192 HEAD 50-59 LBS. 55.00-76.00, WEIGHTED AVERAGE 53.61, WEIGHED PRICE 64.10; 77 HEAD 60-63 LBS. 50.00-60.00, WEIGHTED AVERAGE 61.99, WEIGHTED PRICE 56.29; 28 HEAD 74-77 LBS. 48.00-50.00, WEIGHTED AVERAGE 76.5, WEIGHTED PRICE 49.02.

US#2 15 HEAD 36-38 LBS. 52.00-55.00, WEIGHTED AVERAGE 36.53, WEIGHTED PRICE 52.83; 32 HEAD 40-46 LBS. 32.00-50.00, WEIGHTED AVERAGE 42.06, WEIGHTED PRICE 38.77; 7 HEAD 60 LBS. 46.00, WEIGHTED AVERAGE 60.00, WEIGHTED PRICE 46.00; 9 HEAD 71 LBS. 42.00, WEIGHTED AVERAGE 71.00, WEIGHTED PRICE 42.00.

SLAUGHTER: 34 HEAD 23-30 LBS. 90.00-108.00, WEIGHTED AVERAGE 28.35, WEIGHTED PRICE 93.44.

ALL PIGS CONSIGNED TO WEDNESDAY FEEDER PIG SALE MUST ORIGINATE FROM A QUALIFIED NEGATIVE OR MONITORED HERD.

**Middleburg Hog Report**

Middleburg, Pa.  
Monday, November 13 & 14, 1995  
Report supplied by PDA  
309 HEAD...BULK OF SUPPLY SOLD ON MONDAY AND REPORTED BY THE AUCTION. BARROWS AND GILTS 2.00 HIGHER, SOWS 1.00 HIGHER.  
US#1-2 230-260 LBS. 41.50-44.00, US#1-3 225-260 LBS. 40.25-41.50; US#2-3 225-260 LBS. 38.00-40.25.  
SOWS: US#1-3 350-450 LBS. 33.00-36.00, 475-580 LBS. 35.00-37.50.  
BOARS: ALL WEIGHTS 26.00-28.00.

**New Holland Hogs**

LANCASTER, PA  
NOVEMBER 16, 1995  
TODAY 811  
LAST WEDNESDAY 531  
TREND: Barrows and gilts 25-50 higher. US 1-3 215-255 lbs 40.75-41.25 260-275 lbs 38.00-40.00  
SOWS: Weak to 1.00 lower. 8 percent US 1-3 300-450 lbs 32.00-34.00 450-650 lbs 35.00-35.50

**Indiana Hogs**

SPRINGFIELD, IL  
NOVEMBER 16, 1995  
Barrows and Gilts: .50-1.00 lower. Demand moderate to light. Country Plants US. 1-3 230-260 lbs. 37.50-39.00 38.50-40.25 Few 37.00 & 39.25-39.50 early 2-3 230-260 lbs. 33.00-37.00 210-230 lbs. 29.50-33.00  
Sows: 1.00-2.50 Lower. US. 1-3 300-450 lbs. 27.00-29.00 450-500 lbs. 29.00-32.50 500-600 lbs. 31.00-34.00  
Boars: 25.00-28.00  
Preliminary estimate: 40,000  
\*Receipts have changed due to change in reporting base.

**State Graded Feeder Pig Sale**

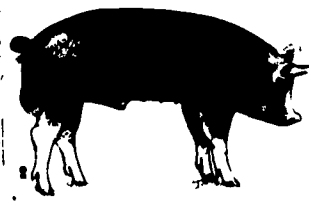
Carlisle Livestock Market, Inc.  
Friday, November 10, 1995  
RESULTS ON 1,336 PIGS.  
TREND: COMPARED TO FRIDAY, OCT. 27, 1995, PIGS WERE ACTIVE; FIRM TO SPOTS 10.00 HIGHER. THEY WERE WEIGHED ON ARRIVAL AND SOLD BY THE HUNDRED WEIGHT.  
US#1&2: 1,161 HEAD. 39 HEAD 26-29 LBS. 85.00-93.00; 98 HEAD 34-39 LBS. 83.00-93.00; 321 HEAD 41-49 LBS. 74.00-88.00; 410 HEAD 50-59 LBS. 72.00-81.00; 157 HEAD 62-69 LBS. 67.00-70.00; 78 HEAD 70-79 LBS. 65.00; 58 HEAD 81-89 LBS. 60.00.  
US#2: 111 HEAD. 5 HEAD 21 LBS. 89.00; 22 HEAD 35-49 LBS. 81.00-83.00; 64 HEAD 52-59 LBS. 73.00-75.00; 20 HEAD 64 LBS. 64.00.  
US#2&3 47 HEAD. 47 HEAD 44-69 LBS. 53.00-66.00.  
AS IS AND UTILITIES: 17 HEAD 35-69 LBS. 10.00-26.00.  
NEXT STATE GRADED FEEDER PIG SALE WILL BE FRIDAY, NOVEMBER 24. RECEIVING 7-11 A.M. SALE AT 1:30 P.M. SHARPI

**Lancaster Hogs**

Lancaster Stockyards  
Wednesday, Nov. 16, 1995  
Report supplied by USDA  
HOG MARKET TODAY: 811 HEAD. LAST WEDNESDAY 531. TREND: BARROWS AND GILTS 20-50 HIGHER.  
US#1-3 215-255 LBS. 40.75-41.25, 260-275 LBS. 38.00-40.00.  
SOWS: WEAK TO 1.00 LOWER.  
US#1-3 300-450 LBS. 32.00-34.00; 450-650 LBS. 35.00-35.50.

**S & J Villari Livestock Feeder Pig Sale**

Millboro, Del.  
November 13, 1995  
Report Supplied by Auction  
578 HEAD  
20-29 LBS. 70.00-91.00; 30-39 LBS. 70.00-90.00; 40-49 LBS. 65.00-78.00; 50-59 LBS. 62.00-70.00; 60-69 LBS. 57.00-67.00; 70-79 LBS. 50.00.



**HAY & GRAIN MARKETS**

**Diffenbach Auction Center**

New Holland, Pa.  
Monday, November 13, 1995  
Report Supplied by Auction  
TOTAL LOADS: 125.  
ALFALFA: 80.00-155.00.  
MIXED HAY: 50.00-165.00.  
TIMOTHY: 60.00-150.00.  
CLOVER: 75.00.  
ORCHARD GRASS: 55.00-140.00.  
STRAW: 50.00-110.00.  
BAR CORN: 105.00-107.00.  
OATS: 2.10-2.75.  
FIREWOOD: 50.00-80.00.

**Greencastle Livestock Market**

Nov. 9 and 13  
Hay & Straw  
Report Supplied by Auction  
23 LOADS.  
ALFALFA: 85.00-105.00.  
TIMOTHY HAY: 70.00-87.50.  
MIXED HAY: 75.00-90.00.  
ORCHARD GRASS: 80.00-86.00.  
STRAW: 50.00-65.00.  
FIREWOOD: 52.50 LOAD.

**Green Dragon Hay**

Ephrata, Pa.  
Friday, Nov. 10, 1995  
Report Supplied by Auction  
75 TOTAL LOADS.  
MIXED HAY: 31 LOADS, 38.00-150.00.  
ALFALFA: 9 LOADS, 89.00-157.00.  
TIMOTHY: 12 LOADS, 81.00-120.00.  
STRAW: 8 LOADS, 72.00-98.00.  
BAR CORN: 3 LOADS, 102.00, 105.00, AND 107.00.  
ORCHARD GRASS: 4 LOADS, 80.00-115.00.  
CLOVER: 2 LOADS, 90.00 AND 95.00.  
RYE: 3.00 BU.  
WOOD: 37.00-72.00 LOAD.  
STUBBLE: 1 LOAD AT 45.00.

**Kirkwood Hay Auction**

Kirkwood, Pa.  
Tuesday, Nov. 14, 1995  
Report Supplied by Auction  
25 LOADS OF HAY.  
MIXED: 1ST CUTTING 62.00.  
TIMOTHY: 140.00.  
ALFALFA: 1ST CUTTING 65.00-83.00, 2ND CUTTING 85.00-93.00, 3RD CUTTING 85.00-90.00.  
CLOVER: 59.00-85.00.  
GRASS: 80.00-85.00.  
WHEAT STRAW: 65.00-70.00.  
BARLEY STRAW: 60.00.  
RYE STRAW: 71.00.  
SALE TIME 11 A.M.

**Regional Hay**

November 13, 1995  
Eastern, Pa.  
HAY & STRAW MARKET FOR EASTERN PA. - (ALL HAY NO. 2 AND BETTER. PRICES PAID BY DEALERS AT THE FARM & PER TON.) HAY AND STRAW STEADY.  
ALFALFA 70.00-110.00; MIXED HAY 60.00-100.00 FEW REPORTED 120.00; TIMOTHY 60.00-105.00 FEW REPORTED 120.00; STRAW 50.00-80.00; MULCH 25.00-45.00.  
SUMMARY OF LANCASTER CO. HAY AUCTIONS FOR WEEK ENDING 11/10/95. PRICES PER TON: LOADS: 218 HAY, 42 STRAW & 14 BAR CORN. ALFALFA 60.00-132.00; MIXED HAY 65.00-150.00; TIMOTHY 77.00-136.00; STRAW 67.00-105.00; BAR CORN 87.00-107.00.  
SUMMARY OF CENTRAL PA. HAY AUCTIONS FOR WEEK ENDING 11/10/95. PRICES PER TON: LOADS: 101 HAY, 17 STRAW & 16 BAR CORN. ALFALFA 61.00-135.00; MIXED HAY 70.00-120.00; TIMOTHY 70.00-120.00; STRAW 55.00-96.00; BAR CORN 87.00-107.50.

**Good's Hay**

Leola, Pa.  
Wed., November 15, 1995  
Report Supplied by Auction  
TOTAL LOADS: 22.  
MIXED HAY: 55.00-160.00.  
ALFALFA: 50.00-102.00.  
TIMOTHY: 152.00-160.00.  
CORN: 92.00-98.00.  
OATS: 2.00 BU.

**Vintage Hay**

Paradise, Pa.  
Thurs., November 16, 1995  
Report Supplied by Auction  
ALFALFA: 90.00-130.00.  
MIXED HAY: 100.00.  
TIMOTHY: 102.50.  
STRAW: 72.00-77.50.  
CORN FODDER 62.50.  
FIREWOOD: 50.00.  
ALE TIME 1 P.M.

**Westminster Hay**

Westminster, Md.  
Tuesday, November 14, 1995  
Report Supplied by Auction  
8 LOTS. SNOWY WEATHER.  
ALFALFA: 2.60-3.90 BALE.  
TIMOTHY: 92.50.  
GRASS: 11.00-18.00 LARGE ROUND.  
STRAW: 1.00-1.10 BALE.  
WOOD: 80.00 CORD.

**KIRKWOOD HAY AUCTION**  
Hay, Straw and Grain Auction  
EVERY TUESDAY  
11:00  
Located Rt. 472 5 miles south of Quarryville or 6 miles north of Oxford corner of Rt. 472 and Noble Road.  
Lloyd H. Kreider, Auctioneer  
AU-000513L  
No out of state checks

**PIGS**  
STATE GRADED SALE  
FRIDAY  
NOV. 24  
1:30 P.M.  
AT  
**Carlisle**  
LIVESTOCK MARKET, INC.  
Exit 12 Off I-81 Turn South  
(717) 249-4511 or  
Evenings Jim, 249-2359

**FEEDER CATTLE**  
Tues., Nov. 21  
7:30 P.M.  
Bring a Load - Buy a Load  
**CARLISLE**  
Livestock Market, Inc.  
Exit 12 off I-81 Turn South  
(717) 249-4511 or  
evenings, Jim  
(717) 249-2359

Walter M. Dunlap and Sons offers all cattle feeders two marketing days. Give us a call for advice and marketing conditions.

**MONDAYS OR WEDNESDAYS**

Consign With Us - For The Marketing Edge

**Next Feeder Cattle Sale**  
Wednesday, November 29 - 12 Noon

**Special Feeder Cattle Sale**  
Wednesday, December 6 - 12 Noon

- 100 Head Charlois - Steer & Heifer Weight 600 to 800 Lbs - Out of Northern PA.
- 14 Choice Augus Cattle Weight 1000 Lbs - Out of N.J.
- 50 Head Charlois Calves - Steer, Heifer & Bulls Weight 300 to 500 Lbs - Out of Northeast PA.
- 40 Steer & Heifer - Steer & Heifer 500 to 600 Lbs - out of Snyder Co.
- 100 Augus Steer & Heifers Weight 400-600 Lbs - Out of MD.
- 70 Head - Mixed Breeds, Steer & Heifers Weight 500-700 Lbs - Out of N.Y.

**Walter M. Dunlap and Sons**  
Lancaster Stockyards  
Tel. (717) 397-5136  
An Old Line Commission Firm Keeping Ahead With The Times

**PENNFIELD GRAIN BANK**

Pennfield Offers A Sound Program For The Dairy Farmer To Use His Grain "Same As Cash" To Reduce His Monthly Feed Bill And To Avoid Having To Take "Harvest Price" For His Grain

Prices Week Of 11/20/95  
Corn \$3.50 Bu.  
Soybeans \$6.65 Bu.  
Barley \$2.60 Bu.

- No Storage Charges
- Prices Updated Weekly
- Grain Bank Balance Shown On Each Invoice
- No Hidden Charges

For every ton of qualifying dairy feed purchased you will receive one ton of grain back hauled at no charge

**INDEX**

Four Sections

**COLUMNS**  
Now is the Time..... A10  
Ida's Notebook..... B 4  
On Being A Farm Wife..... B 5  
All Gardens..... B 7  
Farm Management..... C 9  
HortiCountry..... C10

**HOME AND YOUTH**  
Homestead Notes..... B 2  
Home On The Range..... B 6  
Cook's Question Corner..... B 8  
Kid's Komer..... B10  
Farm Women Societies..... B15  
You Ask, You Answer..... B24

**DAIRY**  
DHIA Focus..... A29  
Top Pa. Herds..... B20, C 2

**DEPARTMENTS**  
Editorial..... A10  
Farm Calendar..... A10  
Futures..... A16  
Mailbox Markets..... B22  
Sale Reports..... B28  
Public Auction Register..... B31  
Business News..... C 6  
Classified Ads..... C10, D 6

**FEATURES**  
Deer Reduction..... A23  
Immune Breeder Flocks..... A30  
Berks Livestock..... A30  
End Of Era..... B 2  
Wetzel's Purpose..... B12  
Holiday To Remember..... B14  
Baking Info..... B18  
Somerset 4-H..... B21  
National FFA..... D 2