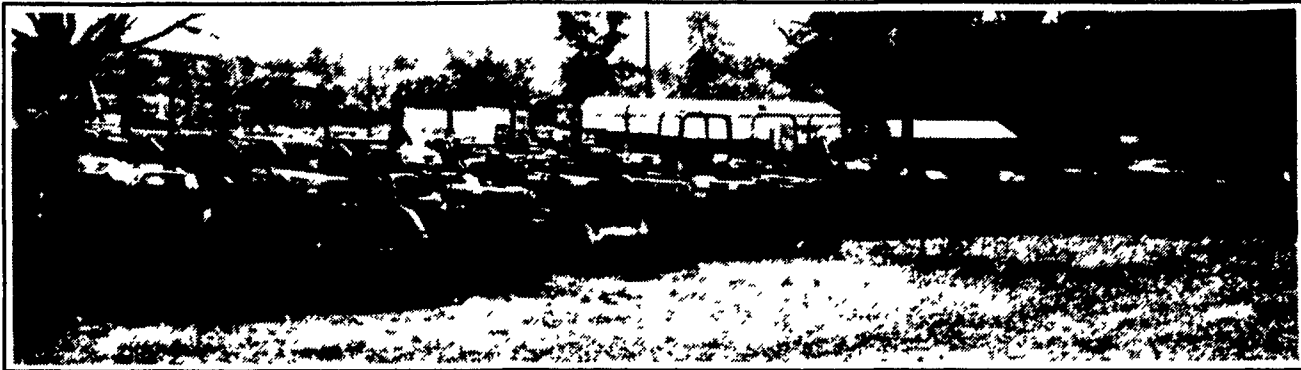


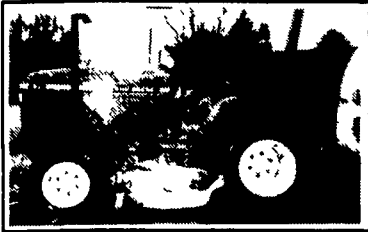
**SALE**

**Large Inventory of  
4x4 Compact Tractors w/Loaders  
"BUY NOW at PRE-SEASON PRICES!"**

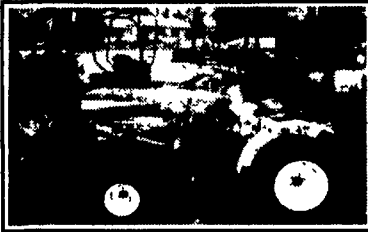
**SALE**



**Inventory of USED KUBOTA 4x4's**



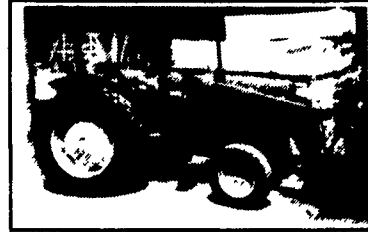
John Deere 670 4x4 Tractor w/60" Mower, Turf Tires, only 260 hrs was \$10,000 **NOW \$8,900**



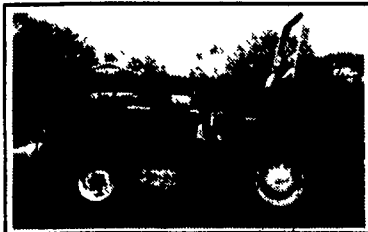
Ford 1210 4x4 Tractor w/Loader, Turf Tires 18 HP Diesel, 3-pt. hitch, PTO, Ex. shape was \$9,900 **NOW \$8,900**



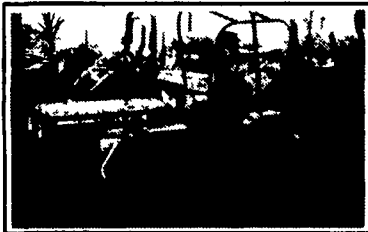
John Deere 755 4x4 Tractor w/Loader, Ag Tires, 3-pt. Hitch, 18 HP was \$10,800 **NOW \$9,800**



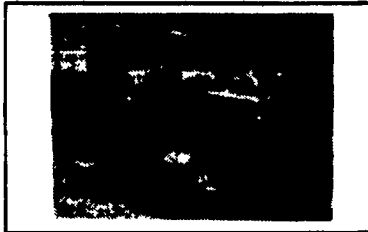
John Deere 1050 4x4 Tractor w/Loader & Turf Tires, PTO, 3-pt. Hitch was \$13,500 **NOW \$11,900**



John Deere 955 Hydro 4x4 Tractor w/Loader Backhoe, 32 HP, Ag Tires was \$15,900 **NOW \$14,900**



Zebra 2040 Twister Tractor, ex. shape was \$5,900 **NOW \$4,900**



John Deere 870 Tractor w/Loader & Backhoe was \$14,200 **NOW \$13,200**



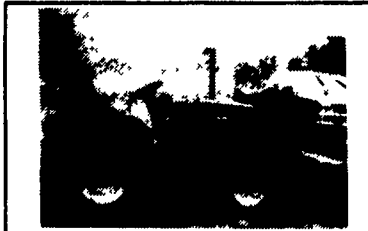
Case IH 244 Tractor w/Woods F35 Belly Mower, Turf Tires, ex. shape was \$6,900 **NOW \$5,900**



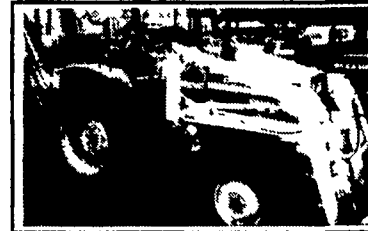
John Deere 855 4x4 Tractor w/Loader, Ag Tires, ex shape 24 HP was \$13,500 **NOW \$12,500**



Kubota 2550 4x4 Tractor w/Loader & Backhoe was \$14,200 **NOW \$13,200**



John Deere 770 4x4 Tractor w/Loader & Turf Tires, 3-pt. Hitch & PTO, low hrs. was \$13,500 **NOW \$12,500**



Deutz Allis Tractor 4x4, 26 HP w/Loader & Backhoe was \$13,900 **NOW \$12,900**



Ford 1910 4x4 Tractor w/Loader **Coming In**

**BACKHOES**  
New Bradco 9' & 11' SPECIALS  
New Woods 650

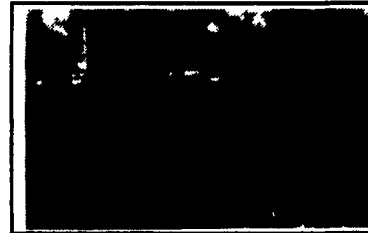
**REAR BLADES IN STOCK**  
5 ft., 6 ft., 7 ft., & 8 ft.

**MISCELLANEOUS NEW EQUIPMENT**  
Landpride 25 60" Rear Finish Mower  
Landpride 25 72" Rear Finish Mower  
Landpride 15 48" Rear Finish Mower  
Danuser 9" & 12" Post Hole Diggers  
Pronovost 6'x50" Hyd. Dump Cart  
Goosen Super Rake 'n Vac  
New Harley Pro 6 3 Pt. Rock Rakes, also mounting for Case Skid Loaders

**OTHER USED 4x4 TRACTORS**

JD 955 TLB  
JD 855 w/Loader  
JD 970 4x4 w/Loader & Backhoe Ag Tires, 260 hrs., Ex. Cond. Coming In  
JD 1050 4x4 With Loader  
Case IH 255, 4x4 Bare  
Ford 535 w/Loader & Backhoe  
Ford 545 4x4 w/Loader  
Ford 2120 4x4 w/Loader & Ag Tires Coming In  
Ford 1710 4x4 w/Loader & Ag Tires 3-pt. Hitch & PTO Was \$10,200 Now \$9,200  
Ford 1920 With Loader 4x4  
MF 40 w/Loader & Backhoe  
Deutz Allis, 26 HP, w/Loader &

Backhoe  
Kubota FZ 2100 w/60" Front Mower  
Kubota B1750 HSD 4x4 w/Loader & 60" Mower, Turf Tires only 250 Hrs. Was \$14,900 Now \$13,900  
Kubota B1750 HSD 4x4 w/Loader & Bar Turf Tires Was \$11,900 Now \$10,900  
Kubota B-7100 4WD with Loader  
Kubota 7100 4x4 w/Mower & Loader, Hydro, Low Hrs.  
Kubota B-8200 4x4 With Loader  
Kubota 1750 HSD, 4x4 w/Loader  
Kubota L2250 DT 4x4 w/Loader  
Kubota L2550 DT 4x4 w/Loader & Backhoe  
Kubota L-2850 4x4 With Loader



Kubota M5030 SOMDT Tractor 4x4 w/Loader **Coming In**

**USED SKID LOADERS**

IH 4130 w/New Engine  
Gehl 5625, Only 2100 Hrs.  
Case 1835

**MISCELLANEOUS USED EQUIPMENT**

Kubota blade for G1800, 1900, 2000  
Landpride 1058, 58" 3pt. Tiller  
Demo-Landpride 1548, 48" Over-Seeder  
New & Used Garden Tractor Harrows  
Danuser 23" Post Hole Digger  
Box Scrapers, 4' & 6'  
Kubota Bagger for G1800, 1900, 2000 w/60" Deck  
3 Pt. Hitch Demco Sprayers  
Wic Bedding Chopper (Straw)  
Brinley Cultivators (Reduced)

**We Have Log Splitters & Snow Plows In Stock**



(610) 926-2441  
Rt 2 Box 2008  
READING, PA

Located: 4 Miles North of Reading on Route 61 - 3 Miles South of Leesport

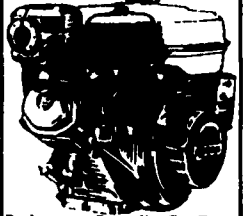
Reg. Hours: Mon. thru Fri. 8 to 5; Sat. 8 to 12

Note: Sale Prices At Lot Delivery Extra

**Toys & Pedal Tractors In Stock For Christmas**  
**Kubota Parts In Stock**

We Ship Daily

**HONDA ENGINES**



Replacement Power You Can Trust

G100	2.2 HP	\$249
Gx120	4 HP	\$294
Gx160	5.5 HP	\$312
Gx200	6.5 HP	\$359
Gx270	9.0 HP	\$504
Gx390	13 HP	\$596
Gx610	18HP	\$943
Gx620	20 HP	\$1041

**Options for 18 & 20 HP Engines**

Muffler Kits \$125.00  
6 to 1 clutch reduction \$795.00  
Fuel tank \$50.00  
Switch panel kit \$100.00  
Recoil start \$175.00  
All Units Have "Oil Alert" Except 2.2 HP  
"FREE" UPS Shipping Pa. Residents Add 6% Tax - Send Check With Order To:

**Blue Mt. Small Engine Service**  
1490 Threes Sq. Hollow Rd.  
Newburg, PA 17240  
717-423-5358  
Let Phone Ring 10 Times

**SMITH FARM EQUIPMENT**

30 Acker Road  
Newport, Pa.  
Perry County  
717-567-3562

Oliver 1755 w/Cab

NH 489 Haybine  
Pequa 710 Tedder  
Case 1130D 4x4 w/ L108 Loader  
NH 254 Rake Tedder  
NH 256 Rake  
IH 154 Low Boy w/belly mower  
1830 Skid Loader  
1537 Skid Loader  
JD 4040 Cab/Air  
IH 674 Dal.  
IH 986  
MF 65 w/Loader  
Farmall Cub  
IH #8 Flail Chopper  
IH 715D Combine  
IH 843 Corn Head  
Gleaner M2 Combine  
NH 770 Harvester  
NH 851 Round Baler  
NH 855 Round Baler  
IH 440 Baler w/Kicker  
NH 40 Blower  
NH 795 Manure Spreader  
JD 714 Silage Wagons (2)  
IH 315 Cultimulcher  
Michigan 175 loader  
Pequa Trailers

**WHITE BUSH HOG**

**USED EQUIPMENT**

Hesston 530 Baler  
Gleaner R52 Combine  
Gehl 700 Forage Harvester w/2R Corn Head  
Oliver 1855  
White 2105  
White 8600 Combine  
White 445 11' Disc Chisel  
Bush Hog 12' Chisel Plow 3 pt.  
MF 4X Semi Mount Plow (2) NI 135 Bu. 212 Spreader  
NI 362 Manure Spreader  
NH 304 Slurry Spreader  
JD 216 Forage Box  
Grove Forage Box  
Gehl Forage Box  
NI 5112 Mower Conditioner  
Hesston 1160 14' Windrower  
White 6100 6R Planter, Sharp  
White 5100 6R Liquid Planter  
NI 323 Picker  
IH 12' Field Cultivator  
Case IH 5100 Drill  
NH 315 Baler w/Thrower  
Hesston 7155 Forage Harvester

**STANLEY'S FARM SERVICE**

RD Box 46  
Klingerstown, PA  
717-648-2088  
**WE ALSO STOCK NEW VICON**