

# Pa. Grange Kicks Off Convention With Contests, Donation

WEST MIDDLESEX (Mercer Co.) — They say charity begins at home.

It was only fitting that the first day of the Pennsylvania State Grange convention here in Mercer County opened with a financial contribution to an area deaf center for children.

The Pennsylvania State Grange Deaf Activities Department presented a check for \$200 to the Mercer County Education and Rehabilitation Center in Hermitage as part of the Sign-A-Song and Public Speaking program held in the West Middlesex High School auditorium.

The check was made possible by a donation from Jackson Grange #1506 of Mercer County. The 123rd annual Pennsylvania State Grange convention was held Oct. 23-26.

Stephanie Strecansky, executive director of the center, thanked the Grange for its long-standing support the last two decades.

"The Grange has always been there for us the past 20 years and has been very, very helpful in providing financial assistance to aid in our mission," Strecansky said to the audience of about 500 people. "We thank you deeply for enabling us to work with deaf and hard-of-hearing children."

The Sign-A-Song competition is held simultaneously with the Public Speaking contest to showcase the talents of Grange members. Sign-A-Song entrants perform sign language to a musical selection incorporating theatrics, body expression and "signability" while public speakers demonstrate the skills that were learned through participation in the Grange.

Dean Miller of Battlefield Grange in Adams County took first place in the individual performance of the Sign-A-Song competition.

The judges credited Miller with great interpretation of the song, outstanding body expression and a good to excellent overall performance. By placing first, Miller won the right to compete at the 1996 National Grange convention in Spokane, Washington.

In order of finish in the Sign-A-Song was Ila May McMillin, Westfield Grange, Lawrence County, Laura McMillin, Westfield Grange, Roy McMillin, Westfield Grange, and Nancy McMillin, also Westfield Grange.

The McMillin family won first-place honors in the group Sign-A-Song.

The public speaking winner in age group 14-18 was Brian Ebersole, Perry Valley, Perry County.

In the age group 19-24 first was Stacy Ebersole, Perry Valley, Perry County, followed by Floyd Buffington, Community Grange, Dauphin County.

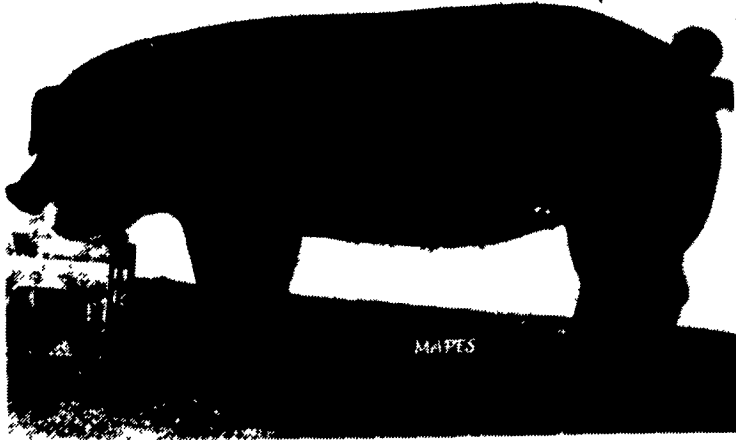
In the age group 25-35, Mary Ann Keith, Lincoln Grange, Huntingdon County, finished first, followed by Laura McMillin, Lawrence County.

The Pennsylvania State Grange is an agricultural, rural and community service organization with over 33,000 members and is dedicated to making Pennsylvania a better place to live through legislative policy, community action and member services.

The Grange is the legislative voice for agriculture and rural issues in Harrisburg and is holding its convention to set legislative policies for the coming year.

The Grange is the legislative voice for agriculture and rural issues in Harrisburg and is holding its convention to set legislative policies for the coming year.

## Ice Pick X Legacy National Champ



AUSTIN, Minn. — Champion gilt of the 1995 National Barrow Show (often called the "World Series" of swine shows) was Ice Pick X Legacy, shown by David C. Holloway, Glen Rock, Pa. The barrow show was held in Austin in September.

Holloway indicated that of the seven Duroc classes, Holloway Durocs had three firsts. This was about a week after another gilt was named supreme champion female at the recent Maryland State Fair.

## USDA Reminds Producers OF FSA Elections

LANCASTER (Lancaster Co.)—Committee Chairman Paul Kline reminded producers of elections to be held Nov. 24-Dec. 4 by mail ballot to elect approximately 3,000 new Farm Service Agency (FSA) Committees for specific agricultural counties or areas.

The committees, consisting of three members, administer farm programs such as commodity price support loans and payments, conservation programs, indemnity and disaster payments, crop insurance and farm ownership and operating loans on a county or community basis. They also hire a county executive director to supervise day-to-day FSA county office operations.

"These committees represent the various types of farming and agricultural regions in the county or area they serve," Kline said. "Cultural diversity of the area, women, all age groups and variations in farm income are reflected in committee makeup."

Nationwide elections for new committee members at this time is necessary because of the extensive reorganization of the USDA by the Clinton Administration. The new Farm Service Agency has been created, combining duties and responsibilities previously carried out individually by the Agricultural Stabilization and Conservation Service, Farmers Home Administration, and Federal Crop Insurance Corporation.

Sprocket packer, 9' wide Dunham Lehr with scrapers, excell cond, used on small farm, \$600 OBO. Lanc. Co. 717-392-7287.

Two wheel farm trailer strong fram with metal bed \$60. Hardie Orchard sprayer with SS tank. York Co. 717-297-1101.

Nice iron age potato planter, potato digger, John Deere corn binder, 2 sets heavy wooden wagon running gear and misc. hardware BO. Berks Co. 610-683-0730.

CS200 89 Mack dump 10ft body or as C&C 84 Ranger AC \$1500. 689 ton eiger beaver trailers, 95 S10. New Castle Co. 302-239-5684.

TD6 Int crawler loader, Drott skid shovel, runs good, needs tracks \$900 OBO. Burlington Co. 609-461-4895.

80-86 Ford pickup/Bronco hood, good condition \$40. Montgomery Co. 215-699-5063.

Metal shop desk \$50. 40x48 4 way pallets \$5.50 each. Metal office desk \$75. 1968 caddy, mechanically sound \$1800. Franklin Co. 717-369-4941.

Straight clean tractor, Farmall M, live PTO, hydraulics, fire crator pistons, new paint, no dents, pusher \$2300 firm. Chester Co. 610-287-8934.

AQHA choc palomino colt yearling AQHA palomino filly yearling, flashy. Montgomery Co. 610-287-9794.

Bike, 10 speed, ladies Peugeot, needs brake cable \$20. Call eves. Lanc. Co. 717-786-1466.

Three bedroom ranch home on one acre 24x36 garage, small barn, good hunting, North of Williamsport \$64500. Lycombin Co. 717-634-2149.

Show pony, child size, many leadline ribbons, also jumps, drives \$1800. Chestnut road broke pony, drives great \$700. Lycombin Co. 717-548-5000.

Case 300 tractor, wide front with heavy duty front end loader \$2000. Corono kerosene heater 22000 BTU \$60. Lanc. Co. 717-786-2239.

2 horse TB shoor \$3000 OBO. 1989 F250 XLT Lariat 460 gas 2 hitches, good shape \$14500 OBO together \$17000 or will separate. Delaware Co. 610-566-1332.

Heat reclaim, fits 6 inch stovepipe, new, never used, made by Magic Heat \$85 OBO. Delivery available. Lehigh Co. 610-767-4768.

JD 750 diesel with 700 hours turf tires, and 60" JD grooming mower, excellent condition \$7500 firm. Bucks Co. 215-598-7131.

Farmall Super A w/S plow \$1850. 1939 JD B head start, nice \$2300. JD 40W \$2500. JD M w/cults \$2500. Fresh paint JD H \$2300. Bucks Co. 215-598-7546.

JD B 2 6PS, two 4x4 off road farm dumps, 39 Chevy pickup Electrac E. POB 581, Goshen NY 10924.

Two 6x24 tires \$75. 18x38 JD rim and tire \$100. 18x30 tire and rims \$80 \$100. 18 inch traction tires \$25. 3B 3pt AC plow. York Co. 717-266-3436.

1974 Toyota FJ40 Land Cruiser, 4x4, looks like a Jeep, 6 cyl engine, runs perfect, has some rust, still road worthy, asking \$2200. Dalco Co. 610-358-5839.

Fireplace insert, glass front, contemporary design, heats whole house Mercer Co. 609-452-9579.

Ontario horse drawn grain drill for parts. Ivan Zimmerman, 72 Hahnstown Rd, Ephrata PA 17522. Lanc. Co.

1 female blue healer pup, 9 weeks old, \$75. New birch kitchen, gruber hay wagon, nice, belgian mare, surge liners. Armstrong Co. 814-395-5764.

Four big heifers, fresh October, milking 70lb per day, \$1200 OBO. Altantic Breeding, Cumberland Co 717-776-6350.

Buckeye incubator kerosene, myers snow plow, fits 1978 Chev PU, 4x4, tractor tire, 28Lx26 2 bucket seats, fits Chev Blazer, blue, clean. Harford Co 410-329-6842

Wood sander, 48" wide beach 2 drum w/paper, 3hp \$1650. Mortis machine \$200. Northumberland Co 717-339-5777

John Deere pulley and power take-off assembly for JD40 Also John Deere power take off shields, best reasonable offer. Fulton Co. 717-987-3395.

Oliver S50 and souders loader \$3250. Firestone tires rice tread 15x30 \$100 12-24 tire \$75. Oliver Raydex plow 2x14 \$125 Franklin Co. 264-4555.

Travel queen slide in pickup camper, needs some work, best offer. Gloucester Co. 609-589-6437

9x9' white metal overhead garage door, like new, all hardware incl \$300. Chester Co. 610-647-9267

Reg miniature donkeys, 6 month, grey dung sack \$700. 4 month choc with white blaze, jack \$1000 Chester Co. 610-869-8883.

Implements 4 cub, Super A, Schwinn tandem, antique furniture, tricycles, sleds, tools, 40" ship, prints, scales, S dresser, 4 A, A-V, J Deere wagon, 5' disc. Salem Co. 609-358-8625.

JD 7x15 FB-B grain drill fertilizer, grass grain, excellent condition. Lebanon Co. 717-949-3261.

Mandarin ducks \$40 per pair. Bucks Co. 215-493-2192.

Camper hitch with torsion bars \$50. Pair detachable towing mirrors \$20. Lebanon Co. 717-949-2366.

Cattle guard Western style access to fields without gate, heavy steel, works for horses too \$125. Nesvold. Schuylkill Co. 717-648-6169.

Sale or trade, manure spreader, New Idea 150 single axle, needs repair, \$200 or hay good for horses. York Co. 717-938-0404.

1968 Ford Mustang, black, mag wheels, air shocks, 6 cyl, 3 speed auto, AM/FM/cass, \$900 cash, best offer, must sell. Howard Co. 410-489-4644.

Polled hereford cattle, bred heifers and weanling heifers, starting at \$650. Registered, by AI sires, call after 7 p.m. Berks Co. 610-589-5617.

Set Goodyear 23.1x30 tires, 50-60% tread \$125. John Deere B 4B, good condition, show or work \$1850. Bucks Co. 215-598-7669.

45 acres hunting ground, surrounded by SGL 251, also registered bay 1/2 arab weanling colt, asking \$1000. Hunt Co. 814-448-2821.

Canoe, Manchester, only in the water one time, \$900, new, will sacrifice for \$600. 2 paddles, new. Montgomery Co. 215-234-8372.

White 6 row no till plate planter, \$2500. Also new 1/2" galvanized cable, 200 feet \$100. Limousin bulls. Cumberland Co. 717-243-1281.

1983 Case 1490 tractor, power shift, 88hp, 1700 hrs, weights, dual remote, dual PTO, 10 hrs, on out-board rebuilt motor, shed kept, mint condition \$13500. Schuylkill Co. 717-345-4109.

New Idea manure spreader, 3 beaters, PTO drive 165 bu VGC \$1250. 1987 contractors choice GVW 20000 24' trailer, gooseneck \$3500. Leave message. Washington Co. 301-582-2526.

T links and paddles for 18 ft manure elevator, best offer. Cumberland Co. 717-530-8506.

1972 C80 Chev 671 Detroit 10 speed trans, can hear motor run whole or parts, \$1800 OBO. Waldorf, MD. 301-870-8572.

15 open holstein heifers, breeding age, calfhood vaci. Cumberland Co. 717-532-6146.

2JD 716 forage wagons, 2650 each, NH 795 manure spreader 3750. JD 400 rotary hoe 1075. GM 478 diesel engine parts. Lebanon Co. 717-866-2091.

2 Int model 815 factory combine traction wheels 20x26" 10 lug holes, like new. Hunterdon Co. 908-782-3671.

MF forklift att, fits model 202 complete \$600. Pettenbone solid tire forklift 3000 lb smokrd \$600. T6 dozer \$3000. Wyoming Co. 717-945-7759.

Tires Safemark 12.4x38 w/ tubes, new, never mounted with tubes \$300 pr. One used 6:00x16 3 rib, good \$25. Chester Co. 610-793-2194.

1995 Arctic cat panther electric start, reverse, cover, handlebar heaters, double seat for two \$3900, nice one. Lackawanna Co. 717-563-2257.

40 Winross most hershey, 1982 Honda Interstate with matching sidcar, low mileage asking \$4500 with extra chrome added. Lebanon Co. 717-838-4224.

\$5900 p/acre, 25 acres gently rolling grassland, ready to build, great location, views, near Rt 61, 178 owner terms. Berks Co. 610-926-3841.

1981 Int DT466 w/14 ft refer box, gas thermoking unit w/elec standby \$7500. Snyder Co. 717-374-4949.

John Deere 318 lawn garden tractor, power steering, 50" deck 330hr garage kept and more \$3300. Chester Co. 610-857-3191.

Tetter like new, Zimmerman, used two years, \$1000 OBO. Dauphin Co. 717-545-7580.

JD110 fenders grill, dentless front tractor mount, circular saw, elect fuel pump for skid or ground tank. York Co 717-266-4490.

Case 404 4 row corn head \$450. Northumberland Co. 717-538-1771.

1976 C750 Ford truck motor, just rebuilt 85000 actual miles, excellent condition asking \$2500. Broadway VA. 703-896-7733 or 896-7752.

Tractor chains, 120" 24" w \$75. Warren Co. 908-453-2088.

1967 Lincoln 4 door conv 75000 miles, leather interior \$12500. 1990 camper Roadtrek versatile Dodge van, high mileage \$10500. Carroll Co. 410-374-6531.

Hermance 12" 4 head moulder 60hp Perkins diesel, good condition. Jacob Mast, 21345 Back Rd, Doyleburg PA 17219. Franklin Co.

Parting out 66 Int truck, 241 6 cyl engine \$300. 4 speed trans \$150. Dual wheel rear axle \$100. Call after 5 p.m. Berks Co. 610-944-0881.

Registered angus bulls, good quality, 16 months old, 18 foot Sunline travel trailer, will trade for stock trailer. Berks Co. 610-678-9326.

John Deere 68 rear engine riding mower, recoil start, rear bagger \$200. York Co. 717-993-6455.

8x16' truck body, 40" sides, \$500 OBO. Call after 6 p.m. Juniata Co. 717-694-3934.

Double set pony harness collars, liner extra good shape \$350. 1 cart with a pole, like new \$425. Lanc. Co. 717-336-7273.

EFFM woodburning furnace with controls and ductwork \$200. Berks Co. 610-286-5535.

### MAILBOX MARKET FOR SALE

Logan metal lathe 10x24" on cabinet stand, lots of tooling and chucks included \$1500, also includes tool post grinder. Dauphin Co. 717-692-2493.

3 burner new perfection cook stove, \$200. 8 quart white mountain ice cream freezer \$1200. Maytag wringer washer. Dauphin Co. 717-469-2369.

Extra heavy duty horse/stock trailer. 1988 Moritz 7x18' gooseneck, removable ramp, excellent condition \$5000. Located near Boston MA Eves. Milton MA. 617-333-0278.

80 Monoflo stainless steel hog nipples \$1.50 each Connerton LP gas grill 22x46" top 42" high, offer. Snyder Co 717-374-2772.

Franco belge pea coal stove, in good working condition \$600 OBO. Melvin King 2687 Stumptown Road, BirdinHand PA 17505 Lanc Co.

Choc AKC lab puppies, wormed and 1st shots, females \$250, males \$225. No Sunday sales. 7 weeks old. Lanc. Co. 717-656-9476.

VW dune buggy, 1600 CC motor dual carbs, fair condition. Chester Co. 610-869-2936.

550 lbs round bales orchard grass or 400 lbs round bales, dry soybean fodder, delivery available. Carroll Co. 410-346-7327.

Ford 4500 backhoe loader, less than 4000 hrs, good solid machine with cab, needs paint \$8000. Chester Co. 717-445-5297.

1973 Chevy Titan 90 tractor, with new wetline, 1962 International 26" tiltbed, 1976 Chevy 1 ton 11000 lb, Massey Harris 2 row self propelled corn picker. Union Co. 717-966-2650.

Electrac BSG 6 1/2" hyd dozer, 6 cyl engine, parts or restore, stored inside, call eves till 10 \$800. Lanc. Co. 717-548-3952.

Parting out MF 410 510 550 combines, gear drives, clip and save. Franklin Co. 717-328-5414.

Jack Russel males, proven breeders, 1 reg pedigree for both. Donkey Jack, gentle reg trottingbred 3 yo filly, drives good, rides, beautiful. York Co. 717-697-1779.

1979 Axial flow combine, 1460 w/3200 hrs, big rubber, very clean, monitors, 820 flex hd, 863 conr head, will separate \$24000. Columbia Co. 717-437-2315.

IH#10 hoe drill, 16x8 grass and fert \$500. 2 MF 410 combines, 1 with 43 corn head, qt 1 with 12' grain and hume reel, gas. Columbia Co. 717-799-5425.

120A farm 105A tillable land and 12x65 mobile home, call after 6 p.m. York Co. 717-927-8570.

Table saw 14" blade, 12" jointer combine, 5hp motor \$195. Tire chains 14.9x24" \$100. 36" saw blade \$50. York Co. 717-292-1802.

6 yr old standard bred trotter, ready for trips and two bred heifers. Lanc. Co. 717-656-6480.

Open buggy, good condition, new carpet, brakes and lights work \$1100. 235 Quaker Church Rd, Christiansia PA 17509. Lanc. Co.

Two 15 ton feed bins \$100. 42" mower, bad engine \$250. 75hp electric motor \$75. Surge vacuum pump. Lanc. Co. 717-548-3474.

Stainless steel fireplace insert, glass doors, blower \$185. Also 4 ft SS 6" stove pipe. Lanc. Co. 717-665-6482.

New undercut surrey white with maroon upholstery hyd brakes other carriages available. Franklin Co. 717-369-3162.

1986 Polaris trail boss 4 wheeler, elec start, reverse \$1200. After 5 p.m. Lanc. Co. 717-872-5514.

Enterprise cook stove, very good condition, coal or wood, also running gears, and carts, complete or parts. Lanc. Co. 717-354-8970.