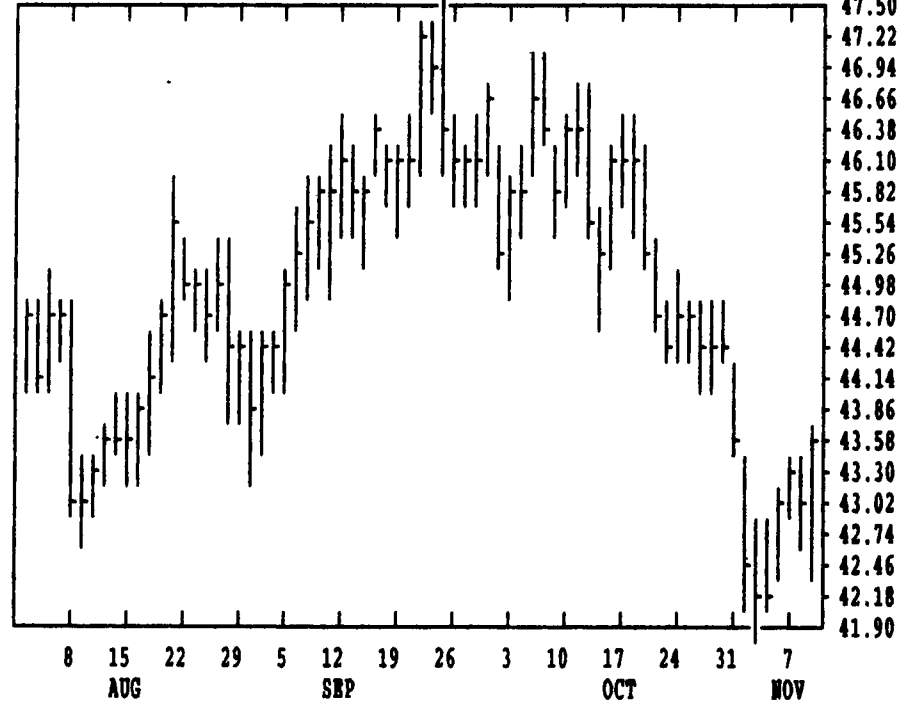
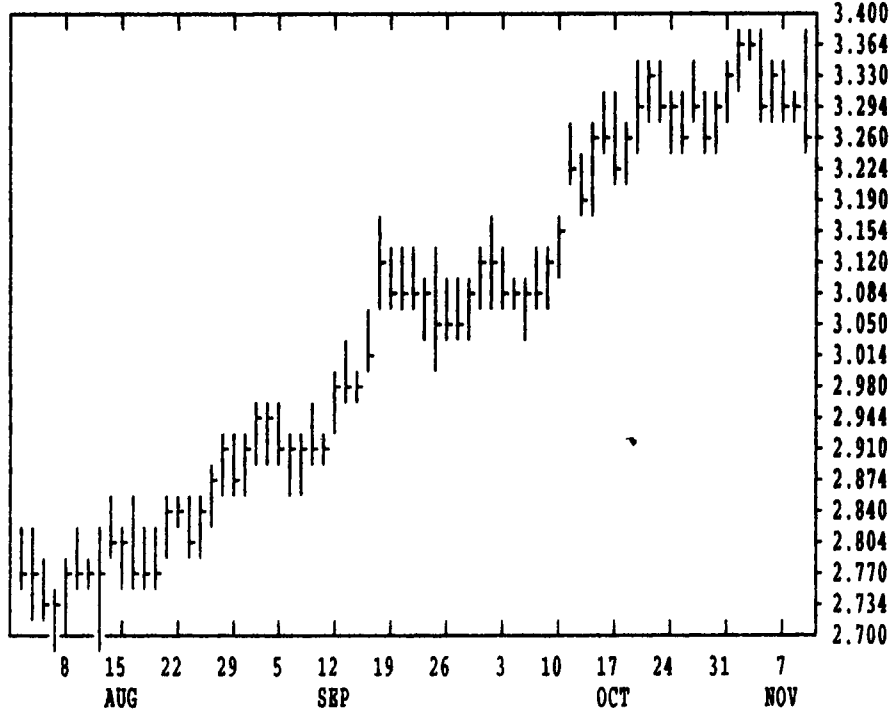


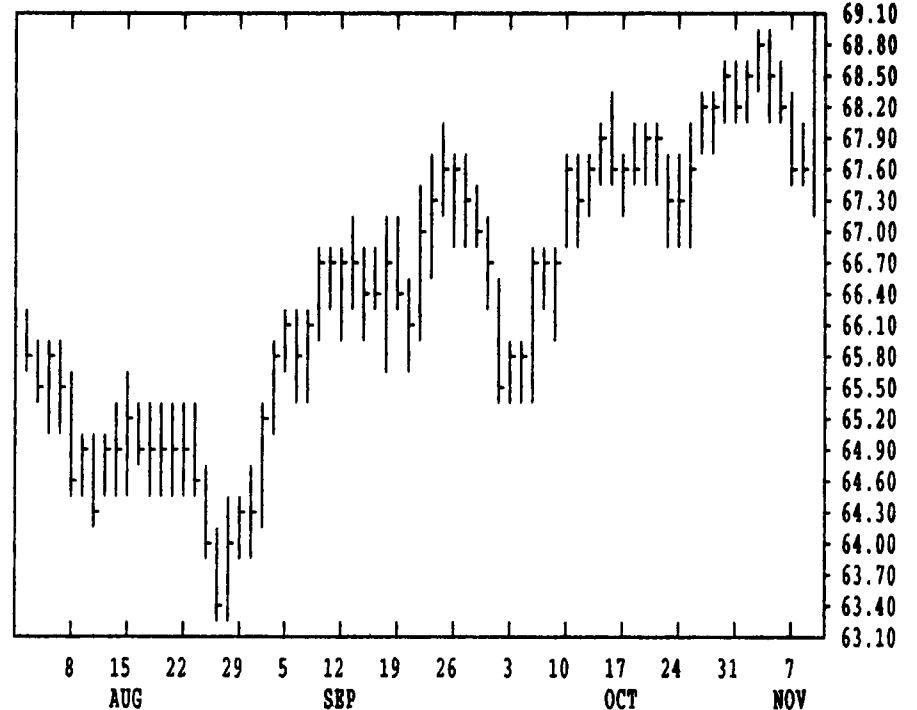
GRAIN, CATTLE AND HOG FUTURES MARKETS

(Closing bids: Thursday, November 9, 1995)

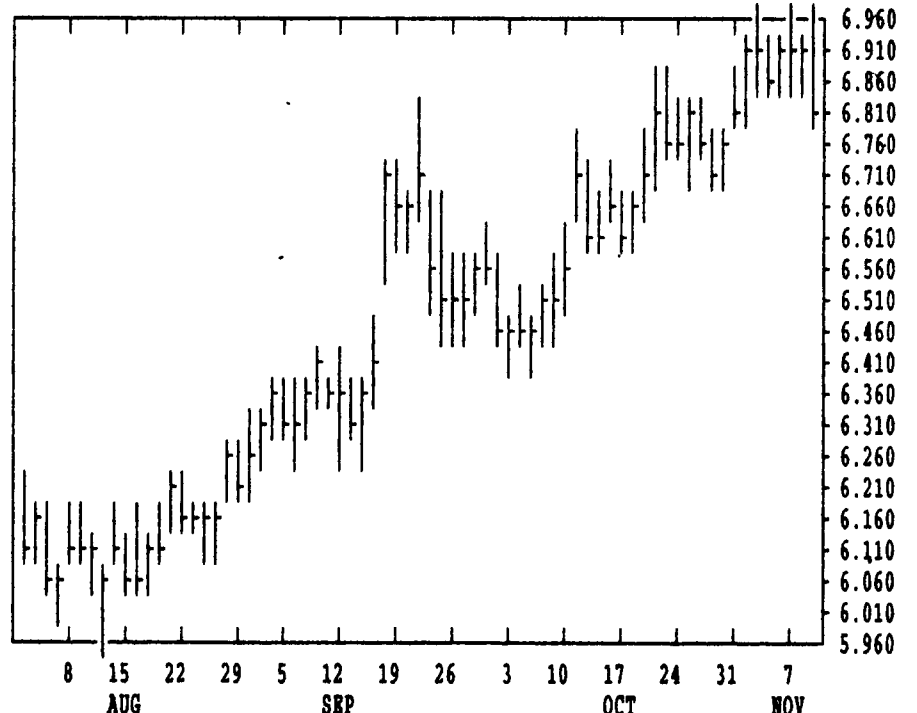
DTN GRAINS 18 CORN DEC 95 CONTRACT HIGH: 3.390 LOW: 2.354



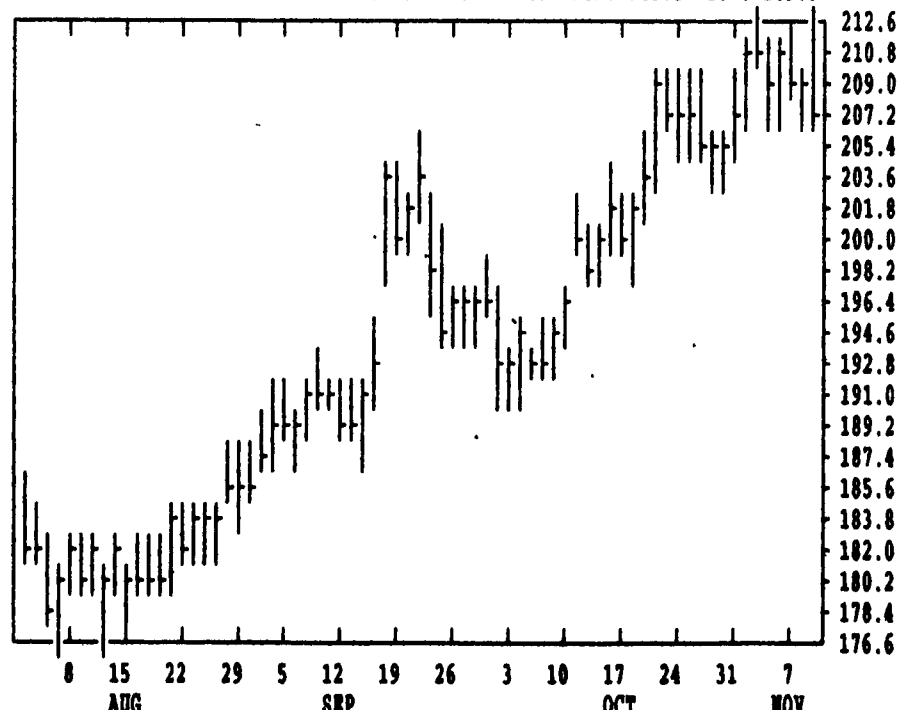
DTN LIVESTOCK 19 CATTLE, LIVE DEC 95 CONTRACT HIGH: 69.17 LOW: 61.75



DTN GRAINS 24 SOYBEANS JAN 96 CONTRACT HIGH: 6.974 LOW: 5.824



DTN GRAINS 25 SOYBEAN MEAL DEC 95 CONTRACT HIGH: 213.5 LOW: 169.3



DTN FUTURES	14	11/03/95	DTN WEEKLY TECHNICAL SUMMARY				11/3
	Past Week's (10/30-11/3)		October's		Current		
	High	Low	Close	High	Low	Support	Resistance
NEARBY WHEAT	502.5	480.00	484.00	511.5	472.5	435-479.00	512-544.00
MAR WHEAT	509.00	488.00	490.5	517.00	482.5	470.50	517.00
NEARBY KCWHT	516.00	495.25	498.25	523.5	492.00	456.00	523.50
MAR KCWHT	513.5	495.00	497.5	519.5	489.5	484.00	519.50
NEARBY MGWWT	507.00	486.00	490.5	513.00	485.75	451.25	522.25
NEARBY CORN	339.00	327.00	332.00	334.00	306.5	318.00	359.00
MAR CORN	344.25	333.25	338.00	339.00	313.75	325.00	???
MAY CORN	343.00	333.00	337.75	339.00	316.25	327-333.00	???
NEARBY OATS	202.00	195.25	199.5	198.25	176.5	182.50	???
NEARBY BEANS	690.00	662.00	678.75	679.00	632.00	626.50	693-701.25
JAN BEANS	697.5	671.25	685.75	688.00	642.5	670.00	697-???
MAR BEANS	708.75	679.00	692.5	695.5	651.5	680.00	???
NEARBY MEAL	213.5	203.7	208.6	209.60	187.90	195.80	249.00
NEARBY BNOIL	26.94	26.33	26.76	27.55	26.25	25.02	28.03
NEARBY LIVCT	69.00	68.175	68.65	68.35	63.475	61.75	69-69.975
FEB LIVCT	68.05	67.225	67.75	67.90	65.05	67.05	???
NEARBY PBDCT	65.45	64.45	65.375	66.10	64.00	62.25	68.00
NEARBY LIVHG	44.75	41.90	42.375	46.85	44.00	38.925	46.575
FEB LIVHG	47.525	45.425	46.075	49.15	46.475	42-45.425	47.775
NEARBY PKBLS	61.90	56.40	56.45	64.30	57.45	51.3-53.375	64.30

CORN				CHICAGO WHEAT				K.C. WHEAT						
DEC	HIGH	LOW	LAST	CHG	DEC	HIGH	LOW	LAST	CHG	DEC	HIGH	LOW	LAST	CHG
DEC	3370	3264	3272*	-36	DEC	4946	4840	4852*	-76	DEC	5120	5010	5024*	-54
MAR	3440	3334	3344*	-32	MAR	5030	4914	4924*	-64	MAR	5084	4974	4984*	-64
MAY	3450	3334	3340*	-44	MAY	4690	4600	4610*	-70	MAY	4810	4674	4674*	-94
JULY	3420	3310	3316*	-42	JULY	4250	4150	4162*	-66	JULY	4414	4320	4324*	-44
SEP	2990	2944	2950*	-12	SEP	4250	4170	4172*	-76	SEP	4400	4330	4330*	-34
DEC	2844	2804	2810*	-6	DEC	4310	4250	4254*	-74	MINN WHEAT				
MAR	2896	2864	2866*	-12	OATS				DEC	5000	4880	4906*	-56	
JULY	2932	2900	2900*	-16	DEC	2086	2044	2050*	+20	MAR	5084	4950	4954*	-86
DEC	2730	2710	2714*	0	MAR	2136	2092	2100*	+24	MAY	4940	4800	4800*	-120
SOYBEANS				MAY	2126	2090	2090*	+20	JULY	4654	4560	4580*	-70	
NOV	6900	6760	6762*	-70	JULY	2084	2050	2054*	+16	SEP	4400	4304	4304*	-54
JAN	6964	6820	6824*	-72	SOYBEAN MEAL				SOYBEAN OIL					
MAR	7040	6900	6904*	-70	DEC	2130	2080	2081*	-20	DEC	2636	2595	2597*	-33
MAY	7080	6944	6950*	-60	JAN	2140	2092	2093*	-16	JAN	2648	2615	2618*	-25
JULY	7090	6960	6962*	-56	MAR	2165	2111	2116*	-13	MAR	2679	2650	2651*	-20
AUG	7040	6924	6924*	-52	MAY	2160	2110	2114*	-11	MAY	2695	2670	2675*	-19
SEP	6840	6790	6764*	-74	JULY	2155	2113	2117*	-8	JULY	2710	2683	2685*	-19
NOV	6770	6680	6682*	-34	AUG	2135	2100	2105*	-2	AUG	2710	2687	2687*	-16
JAN	6820	6760	6760*	-20	SEP	2115	2065	2077*	+5	SEP	2715	2695	2695*	-8
JULY	6940	6890	6890*	-14	OCT	2055	2026	2028*	+3	OCT	2718	2695	2698*	-12

LIVE CATTLE				FREDER CATTLE				LIVE HOGS						
DEC	HIGH	LOW	LAST	CHG	NOV	HIGH	LOW	LAST	CHG	DEC	HIGH	LOW	LAST	CHG
DEC	6917	6745	6915*	+132	NOV	6540	6475	6537*	+15	DEC	4367	4255	4362*	+65
FEB	6850	6737	6845*	+80	JAN	6485	6380	6477*	-5	FEB	4740	4640	4732*	+52
APR	6795	6715	6790*	+55	MAR	6280	6200	6270*	0	APR	4777	4667	4760*	+65
JUN	6417	6350	6410*	+42	APR	6250	6175	6220*	-2	JUN	5335	5275	5330*	+55
AUG	6242	6200	6242*	+30	MAY	6205	6140	6200*	+2	JULY	5325	5275	5320*	+50
OCT	6330	6287	6325*	+30	AUG	6375	6325	6375*	-7	AUG	5215	5160	5200*	+60
DEC	6480	6450	6475*	+20	SEP	6335	6300	6335*	0	OCT	4875	4795	4837*	+65
FEB					OCT	6335	6275	6325*	-2	DEC	4957	4895	4920*	+45
SWISS FRANC				CANADIAN DOLLAR				PORK BELLIES						
DEC	8856	8720	8843*	+76	DEC	7399	7367	7395*	+19	FEB	5785	5560	5760*	+70
MAR	8935	8800	8924*	+77	MAR	7392	7365	7389*	+19	MAR	5785	5572	5760*	+72
JUN	9005	8885	9000*	+77	JUN	7384	7384	7379*	+19	MAY	5915	5722	5850*	+52