

CALL COLDWELL BANKER

CENTRAL VIRGINIA REAL ESTATE

SPECIALIZING IN FARMS, HOMES WITH ACREAGE, INVESTMENT, HUNTING AND RECREATIONAL PROPERTIES. LOW TAXES, FRIENDLY PEOPLE AND A GREAT PLACE TO LIVE!

"FREE Brochures Upon Request"
Contact "Mike" or "Kip" Lafoon

**Coldwell Banker
Lafoon Realty, Inc.**

720 Oak Street, Farmville, Virginia 23901
1-800-767-6191 or 804-392-6191
After 5, Mike 804-392-4375
Kip 804-392-3002



LAFOON REALTY, INC.

Central Virginia Northern Berks Co, PA

Nice 3BR, 2 story brick home, 12 years old.

60 acres tillable nice area, nice view, very private

\$290,000

610-488-7468

DAIRY FARMS

In Morrisons Cove, Blair and Bedford Counties from 94 Acres to 200 Acres, Stanchion and Parlor Operations.

Call for List of Farms Available.

Ask for Wes Century 21/Action Assoc. Inc.
(814) 944-1873

CENTRAL PENNSYLVANIA FARMS, FARMETTES, LAND AND CABINS

Our Farm and Land Division currently has many farms, farmettes, land parcels, and cabins available in central Pennsylvania. We would be happy to send you a free farm and farmette list and/or rural land and cabin list.

See the October 28th or September 30th issues for a complete farm and farmette inventory

Farm and Land Division

Fred Strouse (814) 364-1705
Mel Rocky (814) 466-6688
Terry Gingher (814) 364-1169
Jim Harpster (814) 238-2525



245 S. Allen St., State College, PA 16801
(814) 234-4000
1-800-876-3395

CALL COLDWELL BANKER

CENTRAL PENNSYLVANIA FARMS/FARMETTES BEDFORD CO. - 200A. OPERATING DAIRY FARM - \$475,000

- * 156 tillable, 28 pasture, 1 woodland, 5 site and misc.
- * Sound 2 story home; bank barn with free stall additions (106 stalls)
- * Double 4 milking parlor, 4 silos, liquid manure system
- * Large pole type implement shed-shop
- * Trailer with a bedroom addition
- * Good soils, nice setting along secondary road, large well stocked pond

CENTRE CO. - 27A. DAIRY FARM - \$195,000

- * 22 open, 3 wooded, 2 site.
- * 2 story stone house, 60 stall tie stall dairy barn
- * 42'x64' pole building, 20'x70' Star sealed silo (bottom unloader).
- * Nice, well cared for property, good second building site.

CLEARFIELD CO. - 208 ACRE BEEF FARM - \$335,000

- * 120 tillable, 26 pasture, 53 woodland, 9 acres site & misc.
- * 2 story 3 bedroom brick home, 2 bedroom tenant house
- * Large bank barn, 3 bay garage, 20'x30' Harvestore silo
- * Second 2 story barn, implement shed
- * Nice topography, small pond
- * Attractive, well maintained property, excellent for beef

MIFFLIN CO. - 140 ACRE GENERAL/LIVESTOCK FARM - \$260,000

- * 115 tillable, 3 pasture, 15 acres site & misc.
- * Steel quonset building, pole shed, 2 silos, feed bunk
- * Large paved barnyard
- * Nice laying, productive land, spring water
- * Level area suitable for use as a runway

CALL TOLL FREE FOR DETAILED BROCHURES WITH PICTURES

MANY FARMETTES, VACANT LAND AND HUNTING LAND PARCELS AVAILABLE. FREE LIST.



UNIVERSITY REALTY

126 E. Foster Ave. State College, PA 16801
800-669-4925 Toll Free

WEEKEND RETREATS & HUNTING LAND

JUNIATA & MIFFLIN COUNTY
50 to 75 MILES WEST OF HARRISBURG, PA

Various parcels to choose from, 1-1/2 to 80 acres, mostly wooded, some w/cabins, all necessary permits guaranteed prior to settlement, some borders State Land or is very nearby, excellent deer, turkey & grouse hunting, several parcels very suitable for permanent home sites. Call for information, brochures or a private showing.

JUNIATA AND MIFFLIN COUNTY'S MOST EXPERIENCED RURAL PROPERTY AGENCY
LARRY LONG REAL ESTATE
717-527-4784
CALL ANY TIME

NEW LISTING - CUMBERLAND CO.



Modern 140 Acre Dairy Complex with all the up-to-date amenities for a very efficient family operation. Has been utilized with as many as 175 cows plus plenty of room for dry cows and young stock. One million gallon manure lagoon - 3000 gal. Mueller tank - Double 6 Parlor - 2 equipment sheds - Three 70 ft. silos. 3 other barns for livestock etc. Dwelling - 4 BR rancher with central air, 2 fireplaces, 2 1/2 baths etc. Details on this complex too numerous to mention - Call today for details and personal showing.

7 1/2 ACRE HORSE FARM

between Elizabethtown and Hershey.

Quiet country setting. Large bank barn, very nice 2 1/2 story farm house with large add-on family room and modern kitchen. Small pond, fruit trees etc.

SNYDER CO.

33 Acre Farm with 4 BR log home, new furnace, electric wiring. 1/2 mile of road frontage, bank barn and other our buildings. Also: on an adjacent separate tract - 1684 sq. ft. 7 year old rancher with a 30 mile view.

LANCASTER CO.

40 Acre Dairy Farm - this one has potential for industrial development. On Rt. 340, Smoketown.

SHIPPENSBURG, PA

84 Acre General Farm zoned R-3 for high density housing or mobile court.

CALL TODAY!

MAHLON OBERHOLTZER AGENCY

Your Central PA Farm Broker
Smoketown, PA 17576 (Lanc. Co.)
717-392-1177

63 acre operating dairy



16 stall flat barn, 30x40 heifer barn, 20x38 dry cow barn, calf facilities, 60x90 loafing barn, 40x48 manure storage, 30x48x14 Morton building, 20x75 concrete stave silo w/Badger ring drive unloader and 60 ft. of Patz belt feeder all on concrete feed lot. Excellent 2400 sqft. brick ranch w/hrwd floors, central air, large sunny kitchen and 16x32 inground pool. Very clean & efficient operation. Ideal setting. 55 tillable acres of the county's most productive soils. Could easily be converted for horses. Large flat fields.

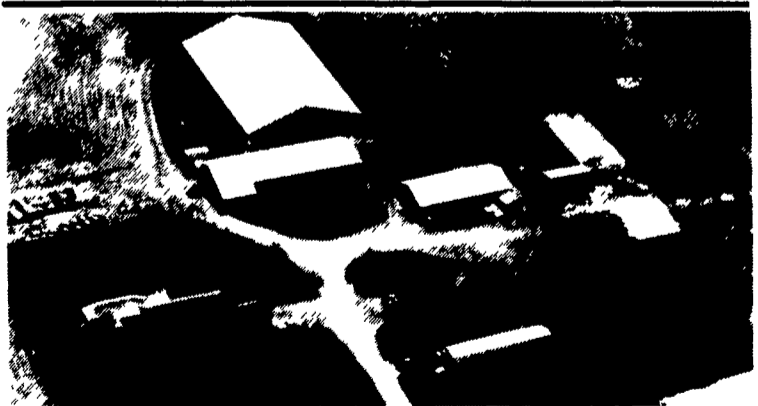
Asking \$475,000

Contact

Larry Yetman
12246 Locust Grove Road
Kennedyville, Md. 21845
410-648-5473

DEMERE REALTY

Rte. 3 Box 91H
Little Falls, NY 13365
Phone & Fax (315) 823-0288
George Demere, Broker



180 COW FREE STALL - ALL NEW SET-UP - RIVER VALLEY FARM

#805 — 221 A. dairy farm with 95 tillable - new 180 cow free stall barn w/drive-thru feeding - 50x100 ft. barn w/double-8 milking parlor w/computerized milking system & automatic take-offs. 3000 gal. B.T., office, furnace & bathroom - also 50x100 ft. dry cow barn w/head locks - lg. mach. shed, shop & insulated 30 ton commodity barn, 40x150 ft. & 50x100 ft trench silos - 5 yr. old 12 rm. colonial home in Ex. cond. & 14x70 ft. mobile home - DUE TO HEALTH PROBLEMS THIS VERY IMPRESSIVE OPERATION HAS BEEN REDUCED TO \$500,000 - cows & machinery avail. - also extra land to rent or buy

FREE - FARM LISTS AVAILABLE

HIGHEST YIELD CROP LAND FINGER LAKES REGION SENECA COUNTY 1-800-553-3124



FARM & GRAIN HANDLING FACILITIES

Outstanding set up for large crop farming operation. Included are quality residence, barns, bins, dryer, heated workshop for heavy equipment, machinery storage units Set on 500+- acres and priced to sell \$697,000.

Call Gene Mutual Res. (315) 539-4465



400 ACRE FARM

Prime crop land with 340+ tillable acres. Farmhouse with 5 bedrooms, 1.5 baths, well maintained. Barns, out-buildings, pond and a spring. \$319,000.

Kathy McLaughlin, Res. (315) 549-8346

Malone-Rivers Real Estate
2 Cayuga Street
Seneca Falls 13148
1-800-553-3124

