

1991 Geo Prizm
 AT/AC, AM/FM, 14,000 Original Miles,
 R Title, Like New.
First \$5,995 Will Be The Happy Owner
Danville (717)437-3848

10.00 & 11.00 15" Lowboy Tires, New \$100. Used \$50, 20" Military Tires, Good Tread. \$20 Each. (717)558-7470.

18' flatbed IH cabover, new inspection, good rubber, \$2000 OBO; 100x100 greenhouse shade cloth, \$100, like new. 717-859-1101 evenings.

1952 IH 200 cab, chassis, 6 cyl., 5 speed, 2 speed rear, air brakes, 40,000 original miles, excellent shape, runs great, \$1000 OBO. 908-362-5683.

1961 International stepvan, 6cyl, 1400 pound GVW, workshop/camper, \$375. Call (717)246-9976.

1967 Mack R model, 33,000 GVW, w/1982 9 ton Eager-Beaver trailer, both excellent shape, \$14,900. (610)584-2772.

1968 F600 dump, V8, 5 speed, 2 speed rear, lots of new parts, ready to work, \$3000 OBO. 908-362-5683.

1970 Ford pickup 68,000 miles, runs, \$500 OBO. Berks County. (610)670-1382.

1971 Dorsey trailer, 30' military heavy duty, good rubber, air over hyd. brakes, \$700 or make offer. Call 717-532-9155 after 5PM

1971 International Model 1800 16' Grain Dump, 345 V8 Gas. (908)735-2720 After 7PM.

1973 Dodge 18' roll back truck, 33,000 GVW, 5sp, 2sp rear, 413 engine, good shape \$2500.; 717/273-3823.

1974 Ford F700, 14' dump truck w/feed blower. (610)589-4308.

1977 Chevy 3/4 ton 4x4, rebuilt 350, 4 speed, new GM sheet metal, 1 ton 4:11 rear, oak flatbed, tool boxes, Class III and gooseneck hitches, new truck for \$4500 OBO. 717-345-8723.

1977 F500 Stake body truck, 21,000lbs GVW, new radiator. 9000 on new motor and clutch, 46,235 actual miles, very good cond., \$3800.; 717/243-0300.

1977 Kenworth 475 DET, 13 speed, good rubber \$4500 OBO. 717-397-3869 after 6PM.

1978 General 12 Ton Tag-Along Trailer, Good Condition \$2,300.(814)852-6866.

1978 GMC 1-ton 10' stake body, good condition, \$1500 OBO. 609-466-0751 after 6PM.

1978 International 1850 Dump Truck w/10' Bed, Good Condition, 33,000GVW, \$4,000. (814)852-6866

1979 Chevrolet, 2 Ton w/ Dump, Stake Body, Excellent Tires and Rear Hitch, Excellent Condition. \$4950 OBO (717)949-3769 7:30-5PM Ask for Dan.

1994 4X4 Ford 350XL Crew Cab, 7.3 Turbo Diesel. (717)354-0282.

(2) 1962 B61 Mack dump trucks, (1) w/trailer hitch, road ready, \$4000; \$2500. 908-996-6327.

24' Swan Refrigerated Gooseneck Trailer. (804)277-8047.

(2) F750 Ford trucks, (1) good, (1) for parts, best offer. 410-836-7924.

(3) Mack trucks and trailer: B422 10-wheeler, dump; B68 tractor w/15 ton lo-boy; C600 diesel tractor. All running and must be seen to be appreciated. (810)488-1567.

40,000 lb. Volvo + ride posi-lock rear, 23,000 miles, 3.56 ratio, \$4,500. RT-906 trans, 6spd, low miles, \$150. 14' steel line bed w/auger booms + air lift, \$950 OBO considered. Lancaster County, (717)733-8528.

40 ton 1980 Trailmobile, single drop; 1974 Ford 600 6x6 w/utility body, exc. cond.; 201/383-9265.

673P Mack diesel engine, rebuilt by Mack dealership, w/warranty, \$5000. 610-454-7362.

72 International CO4070 with 40' trailmobile flat bed, \$4,000 OBO. (814)669-4705.

7 1/2' Meyer power angle, complete, \$1,000. Call Larry (609)466-3942.

'78 Chevy 12' stake, looks and runs well, \$3,000 OBO. (609)894-2849.

'78 International mobile home totter #1800; excellent condition, ready to work, \$6900 OBO. Must sell! Call Jack (609)769-3027.

'81 Chevy Mason Dump, runs and operates well, \$3,500 OBO. (609)894-2849.

'87 Dodge 150, 1/2 ton, 318 auto, PS, PB, AM-FM cassette, 70,000 1 owner miles, new radials, excellent condition, \$5,500. 717-733-2873

'87 Mercury Marquis SL, 88,000 miles, 1 owner, full power, all extras, very good condition, \$4400 firm. 717-534-1253.

'88 Ford Super Duty, 7.3L diesel, 5spd, 14,000 GVW, 150,000 miles, clean truck, new 12' stake body, \$7,800. (717)738-4870.

'90 Dodge LE 250, 3/4 ton, 318 EFI, auto, PS, PB, PW, PDL, cruise, tilt, air, AM-FM, 7,500 GVW, 2 tone brown, \$9,600. 717-733-2873

'90 Ford F450 w/8' dump body; excellent condition, 47,000mi., \$15,900. (717)757-7842.

'91 Ford F150, 4x4, 300 EFI, 5 spd, PS, PB, AM-FM, dual tanks, 6,250 GVW, 19,000 original miles, excellent condition, \$11,995. 717-733-2873

'91 Ford XLT Lariat F250, super cab, 460 EFI, 5 spd, PS, PB, PW, PDL, cruise, tilt, air, AM-FM cassette, new radials, red & white, 47,000 miles, excellent condition, \$13,500. 717-733-2873

'92 Chevy Tahoe S10, ext. cab, V6, 5 spd, PS, PB, AM-FM cassette stereo, 29,000 one owner miles, red & silver, like new, \$8,975. 717-733-2873

E-TOWN DODGE

(2) 1995 BR 3500 4x4, Cab & Chassis or w/Utility Body or w/Dump

1994 Ford F150 Super Cab SLT, 7K

1996 DIESEL Club Cabs & Pickups Coming In

1996 DAKOTAS In Stock (15)

ASK FOR MILTON HESS Certified Truck Specialist 717-367-6644 717-653-6667



82 International Tri-Axle Dump, 350 Cat. 13-Spd, 44,000 Rears, Double Frame, AC, 19 1/2' Aluminum Body w/Liner & Roll Tarp \$21,900
717/529-2512
 No Sunday Calls

Keystone Peterbilt, Inc.

1467 Manheim Pike • P.O. Box 4396 • Lancaster, PA 17604

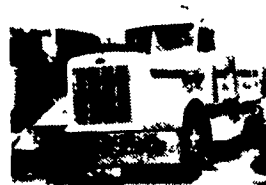
1-800-243-2458



717-299-6630



1990 I.H.C. 8200-3406-350 Eng.; RTX 14609B Eng.; DS402 Air Ride Susps.



1986 PETERBILT Model 359, Long Hood 83' Sleeper, 400 Cummins Diesel, 13 Speed, All Ride, Jake Brake, 10 Alu. Wheels Nice!



1990 PETERBILT-Model 378 - 48" Sleeper, 3406-425 Hp., RTO 15618, DS 402370, Air Ride Susps

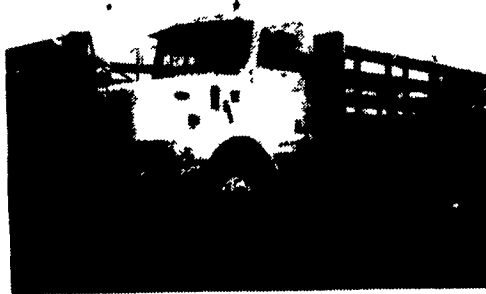


1988 PETERBILT 377-36"; 3406B-350 Eng., RTO 14609B Trans.; DS402-4 33 R. Axle, Air Ride Susp

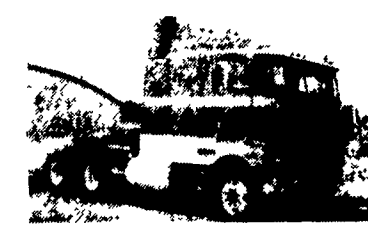


1989 PETERBILT MODEL 379 with 36" Walk-in Sleeper, Long Hood, Cummins Big Cam 4 350 H.P.; RT014613 Speed Transmission, Sq. 100 Rear Axle 3.73

1996 PETERBILT 330 with Morgan Stake Body HPA-16, 16'6" Length, 96" Width; Low Air Ride Susp.; Cat 3116-230 Eng.; Fuller FS6306A - 6 Speed Trans.; Eaton R. Axle, 33,000 GVW. AVAILABLE WITHOUT BODY ALSO!



1984 MACK SUPERLINER REST RITE. RW5722; 3406-350 Jake Eng., Mack T2080 9 Speed Trans., Mack-34,000 R. Axle, Camel Back Susp



1987 PETERBILT 362-110"; 3406B-350 Eng.; RTO14613 Trans.; DS402-3.70 R. Axle; Peter Air Leaf Susp.



USED EQUIPMENT

BODIES

- (2) 10' Eby Cattle Bodies
- (2) 12' Eby Cattle Bodies
- (1) 15' Eby Cattle Body
- (1) 20' Eby Cattle Bodies
- (1) 22' Eby Cattle Body
- (1) 21' Steel Grain Body
- (1) 21' Eby Cattle Body
- (1) 24' Eby Cattle Body

GOOSENECK

- 1994 Featherlight 4 Horse slant load
- 1992 Eby 18'x8'x7'
- 1988 Wilson 22'x7'x7'
- 1986 Ponderosa 20'x7' Steel Gooseneck
- 1986 Barrett 22'x7'x7 1/2' Tall Double Deck
- 1984 Eagle 2 Horse 16'x6'x7'

M.H. Eby, Inc.

1194 Main Street (Route 23) Blue Ball, PA 17506 (717) 354-4971 (800) 292-4752 FAX: (717) 355-2114

4435 State Route 29 West Jefferson, OH 43162 (614) 879-6901 (800) 752-0507 FAX: (614) 879-6904

Agriculture Moves on EBY Bodies

M.H. Eby custom-builds aluminum truck bodies for the agri-transportation market. Nobody offers more sizes and options in:

- **LIVESTOCK BODIES** - Lengths to 32', choice of heights and widths.
- **GRAIN BODIES** - Lengths to 24'; landscape and general purpose dumps to 12'.
- **FLATBED BODIES** - Lengths to 32', choice of 5 widths.

For greater payload capacity, Eby's aluminum design is equal in strength to steel and up to 40% lighter. Our corrosion-resistant components never need painting. That means minimum maintenance, improved appearance and higher resale value.

Eby products have superior standard features. And we offer custom options for virtually any application. Agriculture is your business- building bodies to haul it is ours.



M.H. EBY, INC.

1194 Main Street (Rt. 23) • Blue Ball, PA 17506 • 800/292-4752 • 717/354-4971 • FAX 717/355-2114
 4435 State Route 29 • West Jefferson, OH 43162 • 800/752-0507 • 614/879-6901 • FAX 614/879-6904



Let EBY custom build one for you.

