

35 TRUCKS & TRAILERS

1971 International Model 1800 16' Grain Dump, 345 V8 Gas. (908)735-2720 After 7PM.

1974 Ford F700, 14' dump truck w/feed blower. (610)589-4308.

1975 International 1700 Flatbed Dump, 50,000 Miles on Motor, Transmission and Rears, Very Good Condition. \$3000 Neg. (610)967-3891.

1977 F500 Stake body truck, 21,000lbs GVW, new radiator. 9000 on new motor and clutch, 48,235 actual miles, very good cond., \$3800.; 717/243-0300.

1978 Chevy pickup truck, w/dump, 350 AT 7200# GVW. \$2,500. (717)733-6077.

1978 GMC 1-ton 10' stake body, good condition, \$1500 OBO. 609-466-0751 after 6PM.

1978 International grain truck DT466 diesel engine, 5+2, air brakes, P/S, 16' grain body, twin cylinder scissor hoist, low mileage, all very good condition. Phone evenings, (717)786-1119.

1979 Ford Bronco XLT, 4X4, many options. Make it your classic. Serious calls only, \$4000 negotiable. (717)235-1716.

1979 Ford F-350 dual wheels with 9 foot Eby aluminum cattle body. (610)488-1884.

1979 GMC 32' Van Tandem w/3000 lb. lift gate, 427 gas engine, 10.00x20 tires, airbrakes, asking \$5,350. (215)863-9221.

1980 IH 26' Rollback, S2275, 6V92T, 8Spd. Road Ranger, Recent Overhaul. (717)889-3184.

1980 Int. tandem, 350 Cummins, 9 speed, 10.00x20, excellent condition. (215)863-9221.

1982 DM Mack tri-axle dump truck, 237 engine, 6 speed, 44 rear; Michigan payload w/new engine, D5 caterpillar, good condition; 1975 Int. rollback, CAT motor, 5 speed transmission, 2 speed rear, good condition; 1972 Ford rollback, CAT motor, 5 speed trans., 2 speed rear; 1975 Mack roll off truck, 6000 lbs. Atlas hoist, tri-axle, 237, 6 speed, 44 rear. 610-286-5172.

1982 Iveco Z100 Diesel, 13' Van Body, 11,000 GVW, 88,000 Orig. Miles, 17 MPG. \$3500. (717)867-4896.

1983 GMC Sierra Classic, 1 ton, 454, 4WD, 4 speed, AC, tilt, silver cab, maroon bed, motor has 45,000, \$6500. 717-656-7321.

1983 Mack MR garbage truck, tandem, Demeter packer, \$8,500. 1971 LN Ford rollback, Cummins engine. \$7,500. (610)944-9871, (610)944-7005.

1983 Supreme 7 1/2 'X20' stock/horse gooseneck trailer, \$3000. (717)532-3503.

1984 350 diesel Ford truck, refrigeration body, works good, 11,000 lb. gross weight, 1 owner, 82,000 miles. Also 275 gal. diesel fuel tank and pump on skids, for inside or outside; works good. (717)768-8521.

1984 48' Trailmobile flatbed, fixed tandem, 24.5 Budd \$3500. (717)865-6860.

1984 Ford F150 6 cylinder pickup. New inspection, no rust. \$2,500. (610)589-4818.

1985 Chev 1-ton 12'-dump GVD11000 tag-a-long 73TRL GVD24000. (717)355-0279.

ALL NEW CORN-PRO LIVESTOCK TRAILERS FOR 1996

- * New Roof
- * New Sides
- * New Lights
- * New Fenders
- * New Latches

- Standard Features**
- * Rubber Torsion Axles
 - * White Spoke Wheels
 - * Treated Pine Floor
 - * 6'6" High

6' Wide x 16' Long Bumper Pull, 3500# Axles..... **\$3,250**

6'8" Wide x 16' Long Bumper Pull, 3500# Axles... **\$3,395**

6'8" Wide x 16' Long Bumper Pull, 6000# Axles.... **\$3,650**

All Above Models Available in Gooseneck add \$800.
Stop In or Call for More Information



Hostetler Truck Bodies & Trailers
Rt. 322 Milroy, PA 17603
(717) 667-3921

Keystone Peterbilt, Inc.

1467 Manhelm Pike • P.O. Box 4396 • Lancaster, PA 17604

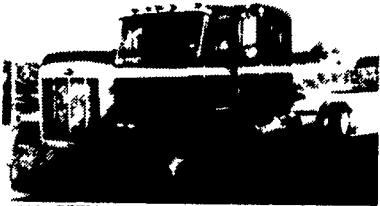
1-800-243-2458



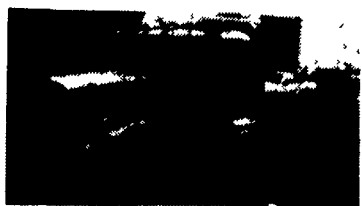
717-299-6630



1989 PETERBILT MODEL 379
with 36" Walk-in Sleeper, Long Hood, Cummins Big Cam 4 350 H.P.; RT014613 Speed Transmission, Sq. 100 Rear Axle 3.73



1980 PETERBILT- Model 378 - 48" Sleeper, 3406-425 Hp., RTO 15618, DS 402370, Air Ride Susps.



1988 PETERBILT 377-36"; 3406E-530 Eng.; RTO 14809B Trans.; DS402-4.33 R. Axle, Air Ride Susp.



1990 I.H.C. 8200-3406-350 Eng., RTX 14609B Eng., DS402 Air Ride Susps.



1986 PETERBILT Model 359, Long Hood 63" Sleeper, 400 Cummins Diesel, 13 Speed, All Ride, Jake Brake, 10 Alu. Wheels Nice!



1984 MACK SUPERLINER REST RITE. RWS722; 3406-350 Jake Eng., Mack T2090 9 Speed Trans., Mack-34,000 R. Axle; Camel Back Susp



1988 Freightliner, FLC11264T; 3306-300 Eng.; 9 Spd Trans.; DS402-3.90 R. Axle; 4 Spring Susp

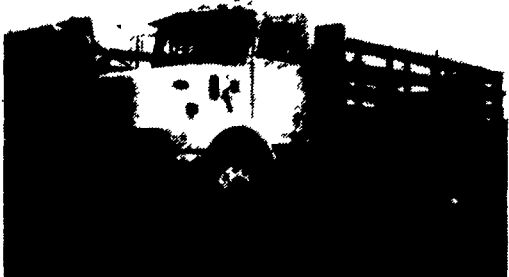


1987 PETERBILT 362-110"; 3406B-350 Eng.; RTO14613 Trans.; DS402-3.70 R. Axle; Peter Air Leaf Susp.



1988 FRIEGLINER FLA966ST - 3406B-350 Eng.; RTX14609B Trans.; SQ100-4.10 R. Axle., Air Ride Susp.

1996 PETERBILT 330
with Morgan Stake Body HPA-16, 16'6" Length, 96" Width; Low Air Ride Susp.; Cat 3116-230 Eng.; Fuller FS6306A - 6 Speed Trans.; Eaton R. Axle, 33,000 GVW.



TRUCKS

The Best Selection of New & Used Trucks Is At Pennsylvania's Leading Truck Source

NEW HOLLAND FORD



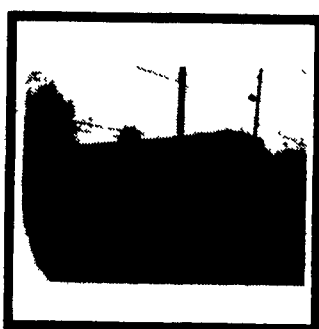
NEW 1996 FORD F-150 PICKUP
4.9L 6 cylinder engine, 5-speed transmission, power steering & brakes, air conditioning, FM/AM stereo, argent step bumper, pinstripes & more! #F6069
SAVE OVER \$2400!
NOW ONLY \$13,998



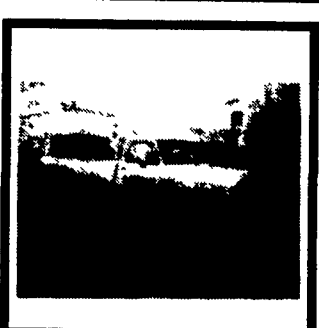
NEW 1995 FORD F-150 4x4 PICKUP
4.9L 6 cylinder engine, 5-speed transmission, 4 wheel drive, power steering & brakes, air conditioning, FM/AM stereo cassette, argent step bumper, XL trim pinstripes & more! #F4739
SAVE OVER \$2000!
NOW ONLY \$15,983



NEW 1995 FORD E-150 CARGO VAN
5.0 liter V8 engine, auto/overdrive transmission, power steering & brakes, FM/AM stereo, dual bucket seats, sliding side cargo door & much, much more! #F4517
SAVE OVER \$3200!
NOW ONLY \$15,983



1982 CHEVROLET STEP VAN
6 cylinder engine, 4-speed transmission, power steering, runs great! A lot of van for all your hauling needs! #F5079A
NOW ONLY \$2950



1986 DODGE RAM 150
6 cylinder engine, 4-speed transmission, power steering & brakes, FM/AM stereo, great running work truck with only 74,000 miles! #F5056A
NOW ONLY \$2950



1994 FORD F-250 SUPERCAB XLT
Turbo diesel, auto trans, w/OD, air cond, pwr. wind & locks, cassette, capt. chairs, lim. slip axle, cap, cruise/tilt, sharp two-tone & much more! Ready to go! #F6065A
NOW ONLY \$19,750

New Holland FORD & ISUZU TRUCKS
Route 23, New Holland PA
717-354-4901 • 800-642-8605