

## Public Auction Register

Closing Date Monday 5:00 P.M.  
of each week's publication

### NOVEMBER

SAT. NOV. 4 - 9AM Complete Business Liquidation of C.S. Willis & Sons. Feed mill equip, coal trucks, dump trucks, antiques, tools. At rear of 342 S. 5th St., Lemoyne, Pa. For C.S. Willis & Sons. Kerry Pae, aucts.

SAT. NOV. 4 - 9AM Consignment Machinery Sale. Info call 837-2222.

SAT. NOV. 4 - 9AM Antiques, household. Rehrensburg Fire Hall. From Reading take Rt. 183 N. until

approx. 2 miles N. of Bernville. Follow New Schaeferstown Rd. approx. 5 miles to second stop sign. take a right. Fire co. is in the square of Rehrensburg. Richard A. Kramer, auct.

SAT. NOV. 4 - 9 AM Nursery stock, trees, shrubbery, evergreens, grasses. Village Farm Market (Hinkletown), from Ephrata take Rt. 322 E. of Rt. 222 by-pass to auction on left. Weavers Nursery. Kline, Kreider & Good, auct.

SAT. NOV. 4 - 9:31 AM

Classic cars & trucks, restored farm equip, 91F 150 LN, ATV, woodworking, mechanics, shop tools, antiques & collectibles, household furnishings. Reed aucts.

SAT. NOV. 4 - 9:45AM 5th anniversary sale. Repossession sale, Keystone Public Auto Exchange. Kerry Pae auct.

SAT. NOV. 4 - 10AM Hydraulic excavators, crawler tractors, crawler loader, loader backhoes, skid steer loaders & trenchers, farm tractors & implements, dump trucks, pickups, trailers. Held behind Weavers Sales and Rentals yard, at 371 Fleetwood Rd. in Bowers/Mertztown, Pa. south of Kutztown, Pa. From Rt. 222 bypass in Kutztown, take first exit into

downtown Kutztown. Turn left on Noble St. and proceed approx. 2 miles to Fleetwood Rd. turn left on Fleetwood Rd. and proceed 3/4 mi. to sale site. Nevins Bros. Auct. Co.

SAT. NOV. 4 - 10AM Absolute Municipal Surplus Auction. Basement of Old Northampton Borough Garage, Laubach Ave & Smith Lane, Northampton, Pa. off Rt. 22 at 987 N. North to Rt. 329 (Nor-Bath Blvd.) Left onto Rt. 329 to Northampton, left onto Laubach Ave. Peter Krall Auction Co.

MON. NOV. 6 - 4:30PM Toys, Winros, Hess, Ertl, Hubley, Tonka, GI Joe & Barbie Dolls, Antiques, household goods, tools. Held at Lampeter Community Building, village of Lampeter, West Lampeter

Twp, Lanc. Co., Pa. Along Rt. 741, behind firehall. By Mr. & Mrs. Robert Zug. Howard E. Shaub, Inc., auct.

MON. NOV. 6 - 5PM Forklifts, grill presses, milling machines, surface grinders, plasma cutters. Elam S. Stoltzfus. Mel Hoover, auct.

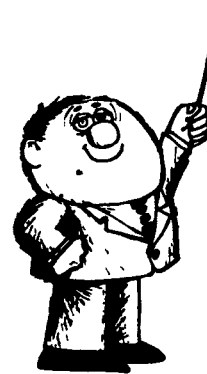
FRI. NOV. 10 & SAT. NOV. 11 - Trackloaders & Dozers, Rubber tired loaders & backhoes, compactor & top soil screener & hydroseeder, skidsteers & farm tractors & equipment, crane, excavator & boom lift, forklift & rollers, chippers & generators & air compressors, road tractors, dumps, wrecker & rollback, mixer & cab & chassis, specialties,

vehicles, trailers & sea containers, misc. lathes, saws, drill press, grinder & joiner & planer, table & cabinets, compressors & kilns & forges, misc. benders, shears & shaper, misc. new auto parts, rest. equip. West on I-70, take E. Patrick St., exit 56 to fairgrounds. Midatlantic Contractors auction. Wolfe

Industrial Auctions, Inc.

SAT. NOV. 11 - 10AM Pemberton Twp Middle School, Pemberton, NJ. Allen's Auction Service.

SAT. NOV. 11 & SUN. NOV. 12 - Antique Harford Day School Show & Sale. Harford Day School, 715 Moores Mill Rd., Bel Air, Md.



## A LESSON WELL LEARNED...

Lancaster Farming's CLASSIFIED ADS GET RESULTS!

Phone: 717-394-3047 or 717-626-1164

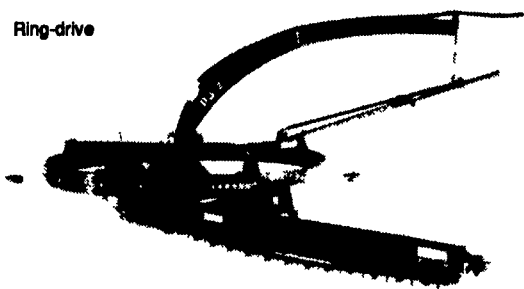
# Patz

## The Full Unloader Line...

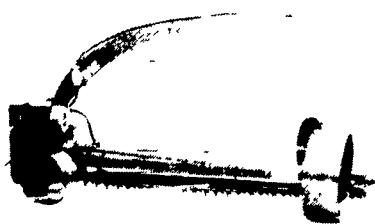
Patz gives you dual-auger unloaders and gathering-chain unloaders plus choice of surface-drive or ring drive/center drive.



Ring-drive

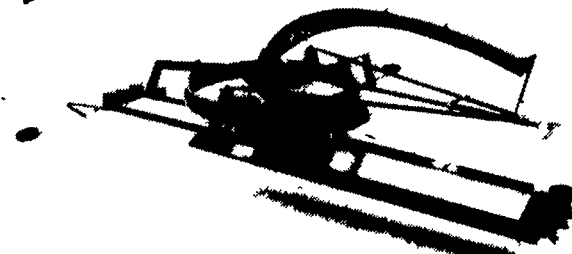


MODEL RD-820  
Ring Drive Silo Unloader

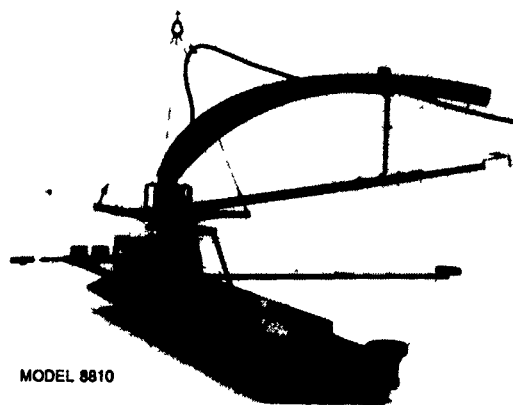


MODEL 98C  
Surface Drive Silo Unloader

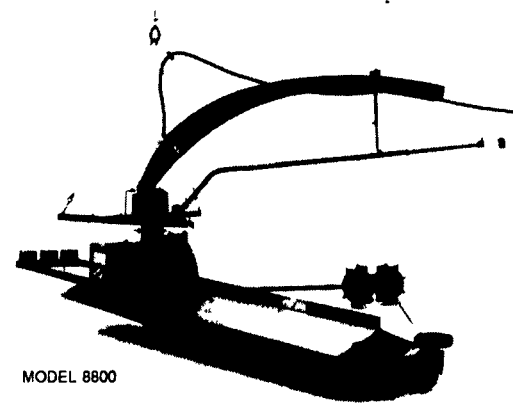
NEW!



MODEL 8820  
Ring Drive, Dual Auger Unloader



MODEL 8800  
Dual Auger, Surface Drive Unloader



MODEL 8810  
Dual Auger, Center Drive Unloader

## SEE YOUR NEAREST PATZ DEALER

ALEXANDRIA  
MAX ISENBERG  
814-669-4027

BALLY  
LONGACRE ELECTRIC  
215-845-2261

BEDFORD  
BENCE'S FARM EQUIP.  
814-623-8601

BELLEFONTE  
LUCAS BARN EQ.  
814-383-2806

BELLEVILLE  
MILLER-LAKE INC.  
717-935-2335

LEBANON  
CEDAR CREST  
EQUIPMENT  
717-270-6600

MECHANICSBURG  
JOHN JONES  
717-766-8582

MIFFLINTOWN  
ZUG FARM & DAIRY  
EQUIPMENT  
717-463-2606

ORANGEVILLE  
FRANKLIN D. HESS  
FARM EQUIPMENT  
717-925-6939

QUARRYVILLE  
UNICORN FARM  
SERVICE  
James E. Landis  
717-786-4158

SHIPPENSBURG  
WITMER EQUIPMENT  
SERVICE  
717-532-6139

SOMERSET  
GROVE EQUIP. SALES  
Mark Knepper - Cliff Lynn  
814-446-6306

HAGERSTOWN, MD  
TRI-STATE FARM  
AUTOMATION  
301-416-7348

KENNEDYVILLE, MD  
PINDER SERVICE CO.  
410-778-0799

WHITEFORD, MD  
ENFIELD EQUIP.  
410-838-0480

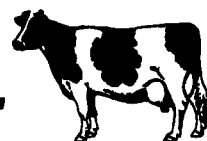
POUND, WI  
PATZ SALES, INC.  
414-897-2251

DISTRICT MANAGERS:

Agri Bee Inc.  
James Bilski, Pres  
814-696-9447  
Fax 814-696-2606

James Smith  
717-485-9585

## Monthly DAIRY CATTLE



### CONSIGNMENT SALE

FRI. EVE., NOV. 17  
7:15 PM

20 Head of Close Springing and Fresh Cows and Heifers from Jim Few.  
20 Head of Holstein Heifers  
250-350 lbs from Ronald Stup  
Many Other Consignments Expected Including Bulls, Open & Short Bred Heifers.  
Last Month's Sale had 125 Head  
Milking Available, Heifers Vet Checked

Four States Livestock Sales  
Hagerstown, MD. Phone 301-733-8120  
Sale Manager: Kenny Smith  
Auctioneer: Floyd Davis

# Antique

HARFORD DAY SCHOOL  
SHOW & SALE

BEL AIR, MARYLAND  
NOVEMBER 11-12

Saturday 10-6 Sunday 11-5  
Admission \$3 (\$2.50 with ad)

DEALERS FROM SIX STATES

Authentic, fine-quality antiques. Exceptional country & period furniture, fine porcelains, silver, orientals, folk art, primitives, pottery, cut glass, prints, textiles, jewelry, art glass, paintings, books, brasses, decoys, more!

Free Parking for Show Visitors  
Home-Made Snacks & Lunches  
Information: (410) 879-2350

### DON'T MISS IT!

25 miles NE of Baltimore, minutes from I-95. From Lancaster, take Rt 222 to U.S.1; follow U.S.1 to Bel Air; left on Moores Mill Rd. From York, take I-83 and MD Rtes 439 and 23 to U.S.1; south on U.S.1 to Moores Mill Rd. From I-95, take Exit 80, north on Rt 543 to Rt 22, left on Rt 22 to 1st light, right on Moores Mill Rd.

HARFORD DAY SCHOOL • 715 MOORES MILL RD  
BEL AIR, MARYLAND • (410) 879-2350

# Patz

