

Mt. Joy Farmers Co-op Occupies New Facilities



A catered meal laid out on tables reaches up to other tables where people entering the two-truck bay maintenance area get a chance to buy Mount Joy Farmers Cooperative Association shirts or sweatshirts, and get more information on the cooperative. Commercial exhibits by businesses involved with the cooperative's building project line the walls.

MT. JOY (Lancaster Co.) — The 165-member Mt. Joy Farmers Cooperative on Thursday held an open house of its new facilities and offices, located just west of the borough Mt. Joy.

The cooperative had grown out of its old building, located in town Mt. Joy. With one small office room serving the old facility, the lack of proper space and difficulty with trucks maneuvering.

The old building was sold and the cooperative paid rent to continue using the office until it could move into its new facility located on five commercially zoned acres just west of town, along Rt. 230.

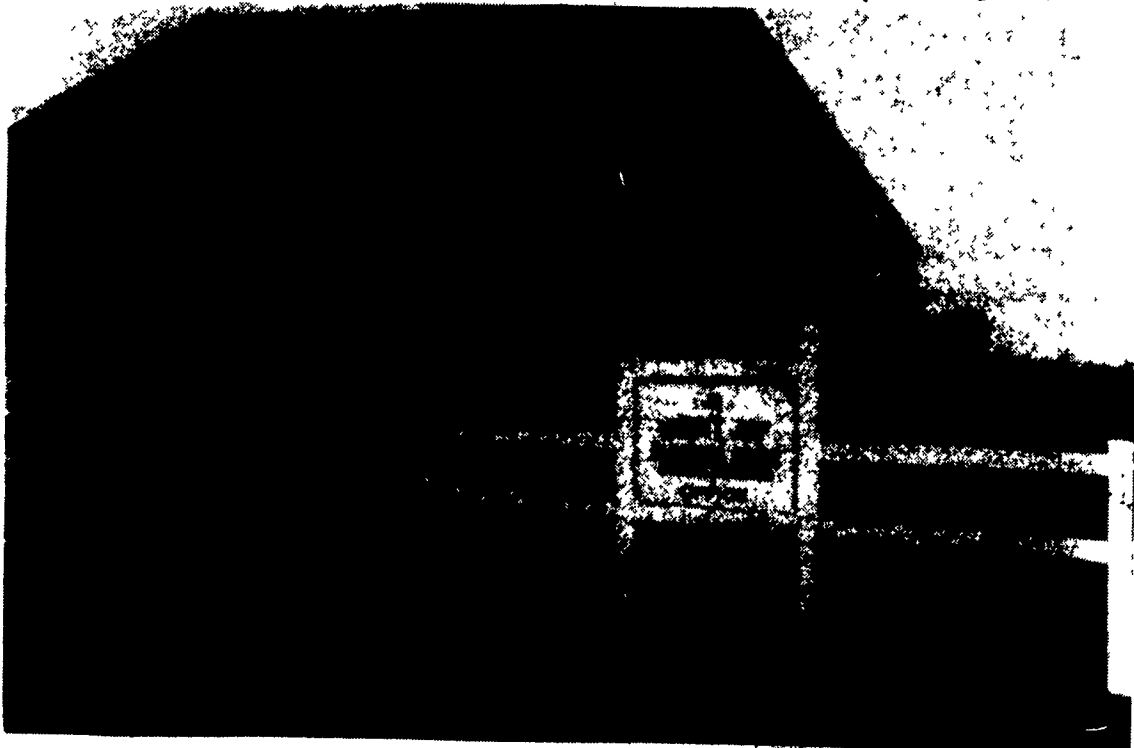
Actually, the cooperative purchased a 10-acre plot of land, but had it subdivided and intends to sell the adjacent five acres.

Its new facility consists of an 85-foot by 70-foot building that

includes a two-truck maintenance bay with a loft over top of the office space.

The office area is divided into a 21-foot by 13-foot board room, a 13-foot by 12.5-foot office for Earl Dehmey, manager, and a secretarial and administrative desk work area about the same size as the board room. There's also another room that can be used for future

(Turn to Page A38)



Visitors enter the new Mount Joy Farmers Co-op office building as part of an open house event.

See Us At The... ANIMAL HOUSING EXPO



PENNSYLVANIA

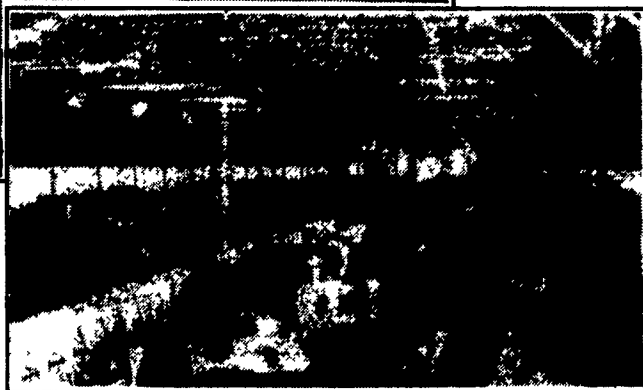
A show for the animal husbandry and poultry industries

November 20-21, 1995
Lebanon Fairgrounds
Lebanon, Pa.

AGRI-INC. CAN DESIGN & BUILD YOUR NEXT MODERN FACILITY



DAIRY COMPLEX
Exterior & Interior



HEIFER AND CALF RAISING FACILITY



HEIFER BARN & TIE STALL BARN

- Dairy Complexes And Replacement Stock Facilities
- Horse Stall Barns And Riding Arenas
- Workshop And Machinery Storage Buildings
- Timber Column Buildings For Light Commercial

Site Layout • Building Design • Construction



AGRI-INC. The Construction Professionals

151 East Farmersville Rd., Ephrata, PA 17522 • (717) 354-4271



LET OUR EXPERIENCE OF OVER 25 YEARS WORK FOR YOU. CALL NOW!

Custom Built Farm & Commercial Buildings Designed To Your Needs